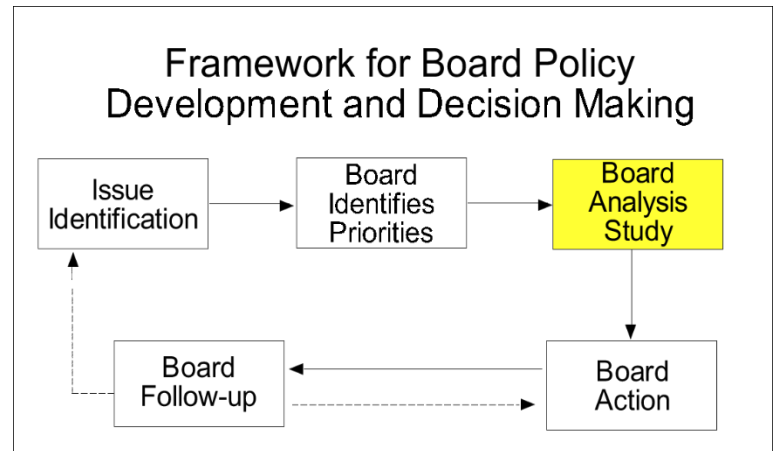


Iowa State Board of Education

Executive Summary

March 21, 2024



Agenda Item: 2023 Iowa Community Colleges Joint Enrollment Report

State Board Priority: Improving Teacher and Leader Preparation

State Board Role/Authority: The annual Joint Enrollment Report for Annual Year 2023 provides information for all community colleges and the general public. This report is presented for information only as the State Board provides leadership and advocacy for the community college system of education in Iowa.

Presenter(s): Jeremy Varner, Chief
Bureau of Community Colleges and Postsecondary Readiness

Attachment(s): One

Recommendation: It is recommended that the State Board review and discuss the information in the attached report.

Background: The Department's annual joint enrollment report provides information on joint enrollment in Iowa to the State Board and stakeholders. The 2023 report will be shared with the State Board at this session for their information and to solicit feedback. After this meeting, this report will be published on the Department website.



Department of Education

Iowa Community Colleges Annual Joint Enrollment Report

Academic Year 2022-23

March 2024

Contents

Executive Summary	4
Joint Enrollment.....	5
Joint Enrollment Offering Arrangements	10
Joint Enrollment Student Demographics	11
Grade Level of Jointly-Enrolled Students	13
Concurrent Enrollment by Subject Area	14
Concurrent Enrollment Demographics and Participation	16
Revenue from Concurrent Enrollment.....	19
Community College Profiles.....	20
Appendix—Percent of High School Students (Grades 9-12) Enrolled in Iowa Community Colleges during AY 22-23.....	21

Executive Summary

The Iowa Department of Education (Department) collects information on joint enrollment from Iowa's 15 community colleges. Jointly-enrolled students are high school students enrolled in community college credit coursework. Most jointly-enrolled students enroll through Senior Year Plus programs, such as concurrent enrollment. Other students enroll independently as tuition-paying students, or enroll in courses delivered through contractual agreements that do not meet the definition of "concurrent enrollment." For more information about Senior Year Plus, please refer to the [Department's website](#).

This report consists of academic year (AY) and trend data on joint enrollment, including headcount enrollment, credit hours taken, student demographics and enrollment by program type and offering arrangement. All data included in this report is taken from the Community College Management Information System (MIS), and confirmed by each college, unless noted otherwise.

Some of the highlights of this AY 22-23 report include:

- Enrollment increased 5.5 percent, from 50,082 students in AY 21-22 to 52,814 in AY 22-23.
- Eight community colleges experienced an increase in the number of high school students enrolled, and the number of credits taken by high school students rose at 12 community colleges.
- High school students participating in joint enrollment programs accounted for 45.1 percent of total community college enrollment.
- Nearly 46.0 percent were high school seniors and 35.0 percent were juniors.
- Joint enrollment programs accounted for 29.9 percent of total community college credit hours earned.
- Jointly-enrolled high school students earned a total of 2,458 awards simultaneously with their high school diplomas, an increase of 36.3 percent from the previous year. These awards included 339 associate degrees, 104 diplomas and 2,015 certificates.
- Among all jointly-enrolled high school students, 97.0 percent participated in courses delivered through a contractual agreement between a community college and a school district. Students who enrolled in tuition-paid courses accounted for the remaining 3.0 percent of total joint enrollment.
- More than half (53.3 percent) of jointly-enrolled students were female, compared to 56.1 percent of the overall credit student enrollment at Iowa's community colleges.
- Jointly-enrolled students who reported having a minority racial or ethnic background represented 18.2 percent of all jointly-enrolled students, compared to 24.7 percent of total community college credit student enrollment.
- The most common subject areas in which students jointly enrolled were: English, social sciences and history, mathematics, health care sciences and manufacturing.
- Of courses taken, 34.1 percent were classified as career and technical education (CTE), a 1.0 percent decrease from the previous year. The other 65.9 percent were classified as arts and sciences, a 1.0 percent increase from the previous year.

Joint Enrollment

Each year, tens of thousands of Iowa high school students enroll in community college credit coursework. The Department refers to these students as “jointly-enrolled”. Through this program, students gain exposure to the academic challenges of college while in their supportive high school environment, earning transcribed high school and college credit simultaneously. These students are more likely to graduate high school, enroll in college, and earn a degree.

In Iowa, high school students can enroll in community college credit courses in a variety of ways, including: through the Postsecondary Enrollment Option (PSEO), through a contract between a local school district and a community college (which is referred to as “concurrent enrollment”) and independent enrollment as a tuition-paying student. While sometimes referred to as “dual credit,” joint enrollment does not necessarily entail credit being issued at both the secondary and postsecondary levels. Some programs, such as concurrent enrollment and PSEO, require that credit be issued at each level, while other joint enrollment opportunities have no such requirement.

Most joint enrollment opportunities fall under the purview of Senior Year Plus, which was established by the Iowa Legislature in 2008. This legislation consolidated and standardized several existing programs involving college credit opportunities for high school students, including PSEO, concurrent enrollment (which entails supplementary weighting for local school districts), career and regional academies, Advanced Placement® and Project Lead the Way®.

While the COVID-19 pandemic negatively affected overall Iowa community overall college enrollment over the last several academic years, joint enrollment continues to be a popular option for high school students. In AY 22-23, a total of 52,814 unduplicated students jointly enrolled, which represents a 5.5 percent increase (2,732 students) from the previous year. Overall, jointly-enrolled students accounted for 45.1 percent of total community college enrollment. Headcount enrollment increased at eight community colleges (Table 1), while the number of credits taken by high school students rose at 12 community colleges (Table 2). Additionally, the number of awards conferred to jointly-enrolled students increased 36.3 percent in AY 22-23, to 2,458 awards, including 339 associate degrees, 104 diplomas and 2,015 certificates (Table 3).

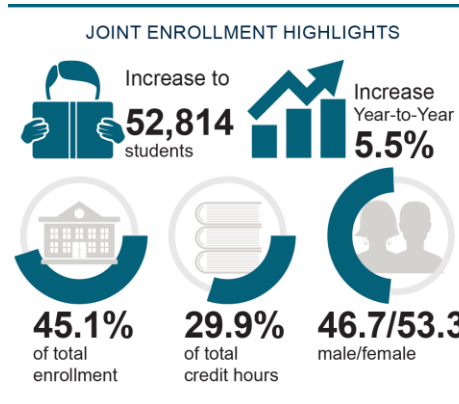


Table 1. Joint Enrollment (Headcount) by College: AY 18-19 – AY 22-23

Community College	AY 18-19	AY 19-20	AY 20-21	AY 21-22	AY 22-23	% Change, AY22-23	% Change, AY18-23
Northeast Iowa	2,971	2,938	2,848	2,873	3,186	10.9	7.2
North Iowa Area	1,515	1,460	1,445	1,390	1,507	8.4	-0.5
Iowa Lakes	1,198	1,202	1,141	1,177	971	-17.5	-18.9
Northwest Iowa	1,075	1,105	1,190	1,205	1,256	4.2	16.8
Iowa Central	2,376	2,320	2,089	2,412	2,273	-5.8	-4.3
Iowa Valley	1,465	1,481	1,410	1,364	1,404	2.9	-4.2
Hawkeye	2,786	3,003	2,985	3,110	3,023	-2.8	8.5
Eastern Iowa	4,861	4,977	4,585	5,321	5,173	-2.8	6.4
Kirkwood	5,407	5,481	5,398	5,620	5,921	5.4	9.5
Des Moines Area	16,961	17,770	14,888	15,528	17,858	15.0	5.3
Western Iowa Tech	3,186	3,397	2,916	3,354	3,195	-4.7	0.3
Iowa Western	2,516	2,578	2,594	2,615	2,824	8.0	12.2
Southwestern	794	909	867	920	903	-1.8	13.7
Indian Hills	2,234	2,014	1,850	1,949	1,941	-0.4	-13.1
Southeastern	1,242	1,165	1,056	1,244	1,379	10.9	11.0
Total	50,587	51,800	47,262	50,082	52,814	5.5	4.4

Table 2. Joint Enrollment Credit Hours by College: AY 18-19 – AY 22-23

Community College	AY 18-19	AY 19-20	AY 20-21	AY 21-22	AY 22-23	% Change, AY 22-23	% Change, AY 18-23
Northeast Iowa	23,273.0	21,593.5	22,183.0	22,747.0	25,339.5	11.4	8.9
North Iowa Area	13,376.0	12,211.0	12,396.5	12,997.0	13,937.5	7.2	4.2
Iowa Lakes	9,908.0	9,479.0	8,891.0	9,670.0	9,465.0	-2.1	-4.5
Northwest Iowa	8,053.0	7,981.0	8,089.0	8,551.0	9,182.5	7.4	15.0
Iowa Central	21,060.5	20,082.0	18,202.0	21,506.5	20,117.0	-6.5	-4.5
Iowa Valley	12,985.5	13,830.5	13,313.5	13,543.0	13,607.5	0.5	4.8
Hawkeye	17,790.0	18,711.0	20,814.0	23,308.0	21,351.0	-8.4	20.0
Eastern Iowa	36,315.3	37,613.0	36,911.5	41,949.0	42,493.0	1.3	17.0
Kirkwood	43,591.0	44,396.0	42,818.0	44,349.5	48,391.0	9.1	11.0
Des Moines Area	151,178.0	152,801.0	126,368.0	130,546.0	154,533.0	18.4	2.2
Western Iowa Tech	24,529.0	26,332.0	23,754.0	28,418.0	29,179.0	2.7	19.0
Iowa Western	23,009.5	24,893.5	25,451.5	27,148.0	29,992.0	10.5	30.3
Southwestern	7,885.0	8,653.0	8,842.0	9,407.0	9,851.0	4.7	24.9
Indian Hills	23,039.5	20,792.5	19,184.0	20,803.0	22,041.0	6.0	-4.3
Southeastern	9,544.0	9,428.5	8,385.0	9,426.0	11,040.5	17.1	15.7
Total	425,537.3	428,797.5	395,603.0	424,369.0	460,520.5	8.5	8.2

Table 3. Joint Enrollment Awards by College: AY 22-23

Community College	Associate of Arts (AA)	Associate of Science (AS)	Associate of General Studies (AGS)	Associate of Applied Science (AAS)	Diploma	Certificate	Total
Northeast Iowa	24	3	0	0	1	0	28
North Iowa Area	3	1	0	0	2	125	131
Iowa Lakes	5	4	0	0	0	0	9
Northwest	0	0	0	0	0	1	1
Iowa Central	1	0	0	0	0	100	101
Iowa Valley	24	0	0	2	19	32	77
Hawkeye	2	2	0	0	0	9	13
Eastern Iowa	66	8	0	2	5	201	282
Kirkwood	12	4	0	1	2	42	61
Des Moines Area	67	31	1	0	2	712	813
Western Iowa Tech	6	0	0	0	6	419	431
Iowa Western	18	21	0	1	10	133	183
Southwestern	5	2	0	0	0	101	108
Indian Hills	13	0	0	5	57	11	86
Southeastern	4	1	0	0	0	129	134
Total	250	77	1	11	104	2,015	2,458

Because high school students generally enroll part-time at community colleges, they account for a higher percentage of enrollment at each college (Figure 1) than credit hours (Figure 2). Statewide, in AY 22-23, joint enrollment accounted for 29.9 percent of total credit hours (Table 4). The rate at which high school students enroll in college coursework varies by local school districts and community college regions (see map data in Appendix).

The number of credit hours taken by each jointly-enrolled student increased slightly from the previous year, with each student enrolling in an average of 8.7 credit hours (Figure 3), compared to 8.5 credit hours in AY 21-22. This number has risen by 1.8 credit hours since AY 03-04.

Overall, Iowa continues to be a national leader in the percentage of high school students enrolled in community college courses. According to the most recent complete data collected from the National Center for Education Statistics (Fall 2021), 38.2 percent of Iowa students under 18 years old jointly enroll, while the national average is only 18.2 percent (NCES Fall 2021 enrollment report, January 20, 2023).



Figure 1. Joint Enrollment as a Percentage of All Students by Community College: AY 22-23

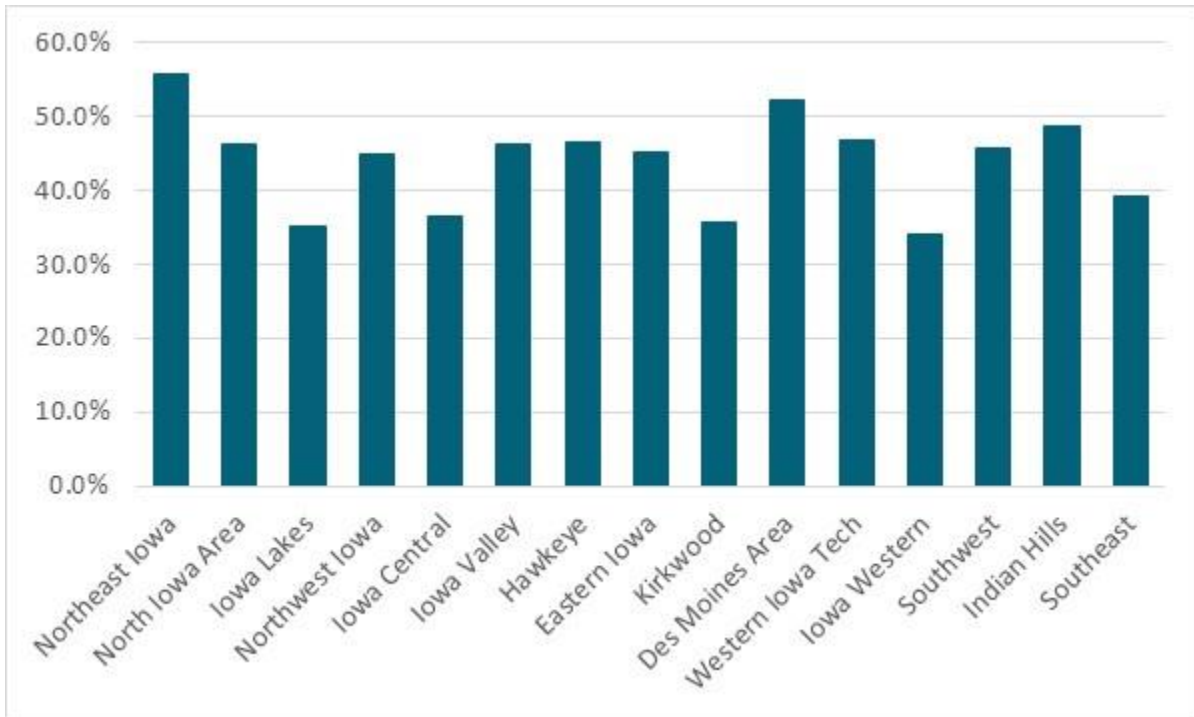
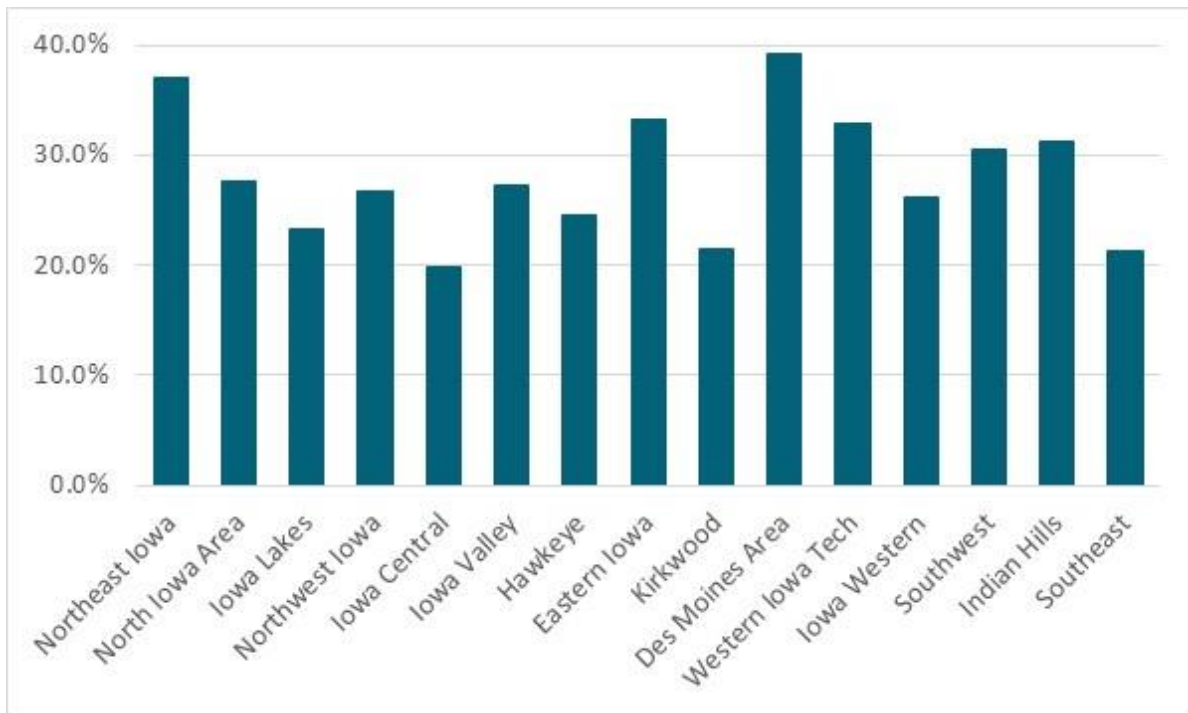


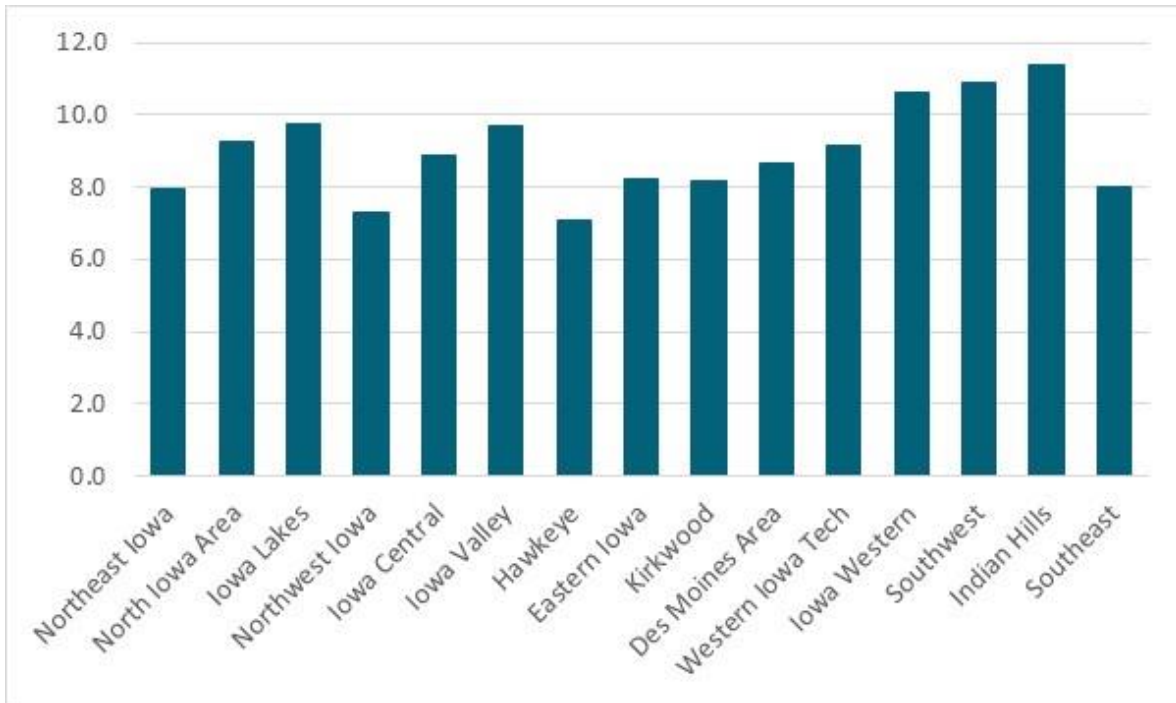
Figure 2. Joint Enrollment as a Percentage of All Credit Hours by Community College: AY 22-23



**Table 4. Joint Enrollment as a Percentage of All Students and Credit Hours:
AY 18-19 – AY 22-23**

Community College	AY 18-19		AY 19-20		AY 20-21		AY 21-22		AY 22-23	
	% Students	% Hours	% Students	% Hours	% Students	% Hours	% Students	% Hours	% Students	% Hours
Northeast Iowa	50.0	31.4	49.8	30.2	50.8	33.1	52.1	33.9	55.9	36.9
North Iowa Area	39.2	22.0	39.4	20.9	41.3	23.0	43.3	25.9	46.2	27.6
Iowa Lakes	40.6	21.9	42.0	22.3	44.6	23.4	42.8	24.8	35.3	23.3
Northwest Iowa	38.0	23.5	39.6	23.1	42.9	23.8	43.8	25.3	44.9	26.7
Iowa Central	35.2	19.4	36.0	19.3	36.2	18.9	38.7	21.2	36.4	19.8
Iowa Valley	42.8	24.1	44.7	25.5	45.7	26.7	45.6	27.5	46.2	27.2
Hawkeye	36.9	17.7	41.1	19.3	42.9	22.5	46.5	25.8	46.5	24.5
Eastern Iowa	38.1	25.4	39.1	26.6	40.0	27.8	43.3	31.9	45.1	33.3
Kirkwood	28.4	16.2	29.8	17.1	31.6	18.3	33.5	19.3	35.7	21.4
Des Moines Area	47.2	35.0	48.0	35.8	44.3	32.2	46.6	33.8	52.2	39.2
Western Iowa Tech	42.0	25.8	44.1	27.2	42.2	26.3	46.6	32.0	46.7	32.9
Iowa Western	26.9	18.0	28.7	20.0	31.0	21.3	31.9	23.0	34.0	26.2
Southwestern	39.3	24.1	44.1	27.3	44.6	29.6	47.3	30.6	45.7	30.5
Indian Hills	44.6	26.8	44.4	26.2	43.7	25.9	45.6	28.0	48.8	31.2
Southeastern	34.5	17.9	35.0	18.5	33.5	17.4	37.3	19.1	39.2	21.2
Total	39.3	24.8	40.8	25.6	40.4	25.4	42.6	27.6	45.1	29.9

Figure 3. Average Jointly-Enrolled Student Credit Hours by Community College: AY 22-23



Joint Enrollment Offering Arrangements

Contracted courses, commonly referred to as “concurrent enrollment,” made up the vast majority of the three types of joint enrollment arrangements in AY 22-23, accounting for 97.0 percent of jointly-enrolled students (Figure 4). Enrollment in contracted courses rose 5.6 percent from the previous year, to 52,856 students. For the second consecutive year, enrollments through PSEO remained at zero students. This situation is largely driven by Iowa statutory changes that went into effect during AY 17-18, resulting in a shift away from the PSEO program and toward concurrent enrollment. Tuition-paying student enrollment increased 10.8 percent in AY 22-23, from 1,469 students the previous year to a total of 1,627 students (Table 5).

Figure 4. Joint Enrollment by Offering Arrangement: AY 22-23

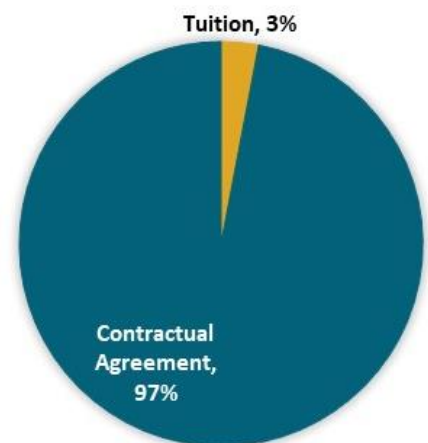


Table 5. Joint Enrollment and Credit Hours by Offering Arrangement and Community College: AY 22-23*

Community College	Contracted		Tuition		Total HS Students*	
	Students	Credit Hours	Students	Credit Hours	Students	Credit Hours
Northeast Iowa	3,224	25,128.0	37	211.5	3,261	25,339.5
North Iowa Area	1,248	12,679.5	296	1,258.0	1,544	13,937.5
Iowa Lakes	983	9,311.0	35	154.0	1,018	9,465.0
Northwest Iowa	1,258	8,900.0	63	282.5	1,321	9,182.5
Iowa Central	2,324	20,117.0	0	0	2,324	20,117.0
Iowa Valley	1,418	12,930.5	90	677.0	1,508	13,607.5
Hawkeye	3,087	21,161.0	24	190.0	3,111	21,351.0
Eastern Iowa	5,126	40,533.0	347	1,960.0	5,473	42,493.0
Kirkwood	5,982	48,019.5	74	371.5	6,056	48,391.0
Des Moines Area	17,796	151,613.0	477	2,920.0	18,273	154,533.0
Western Iowa Tech	3,243	29,179.0	0	0	3,243	29,179.0
Iowa Western	2,925	29,804.0	35	188.0	2,960	29,992.0
Southwestern	920	9,764.0	22	87.0	942	9,851.0
Indian Hills	1,932	21,825.0	45	216.0	1,977	22,041.0
Southeastern	1,390	10,693.5	82	347.0	1,472	11,040.5
Total	52,856	451,658.0	1,627	8,862.5	54,483	460,520.5

*Duplicated Count

Joint Enrollment Student Demographics

In AY 22-23, jointly-enrolled students were predominantly white, high school seniors. Additionally, 53.3 percent of joint enrollees were female (Figure 5), compared with 56.1 percent of the overall community college student body, and 18.2 percent of joint enrollees reported having a minority racial or ethnic background. Of those who reported a minority status, Hispanic students were the largest group, at 50.9 percent, followed by Black students at 18.0 percent and Asian/Pacific Islander students at 17.3 percent (Figure 6). In comparison, within the same year, 24.7 percent of all community college credit students reported having a minority racial or ethnic background, with 39.3 percent of those reporting Hispanic and 30.9 percent reporting Black.

As expected, jointly-enrolled students are younger than the overall community college student body. In AY 22-23, 14.8 percent of jointly-enrolled students were 15 years old or younger; 26.5 percent were 16; 39.3 percent were 17 and 19.5 percent were 18 years or older. Jointly-enrolled students are almost exclusively Iowa residents; in AY 22-23, 99.5 percent of these students lived in-state.

Figure 5. Jointly-Enrolled Student Gender by Community College: AY 22-23

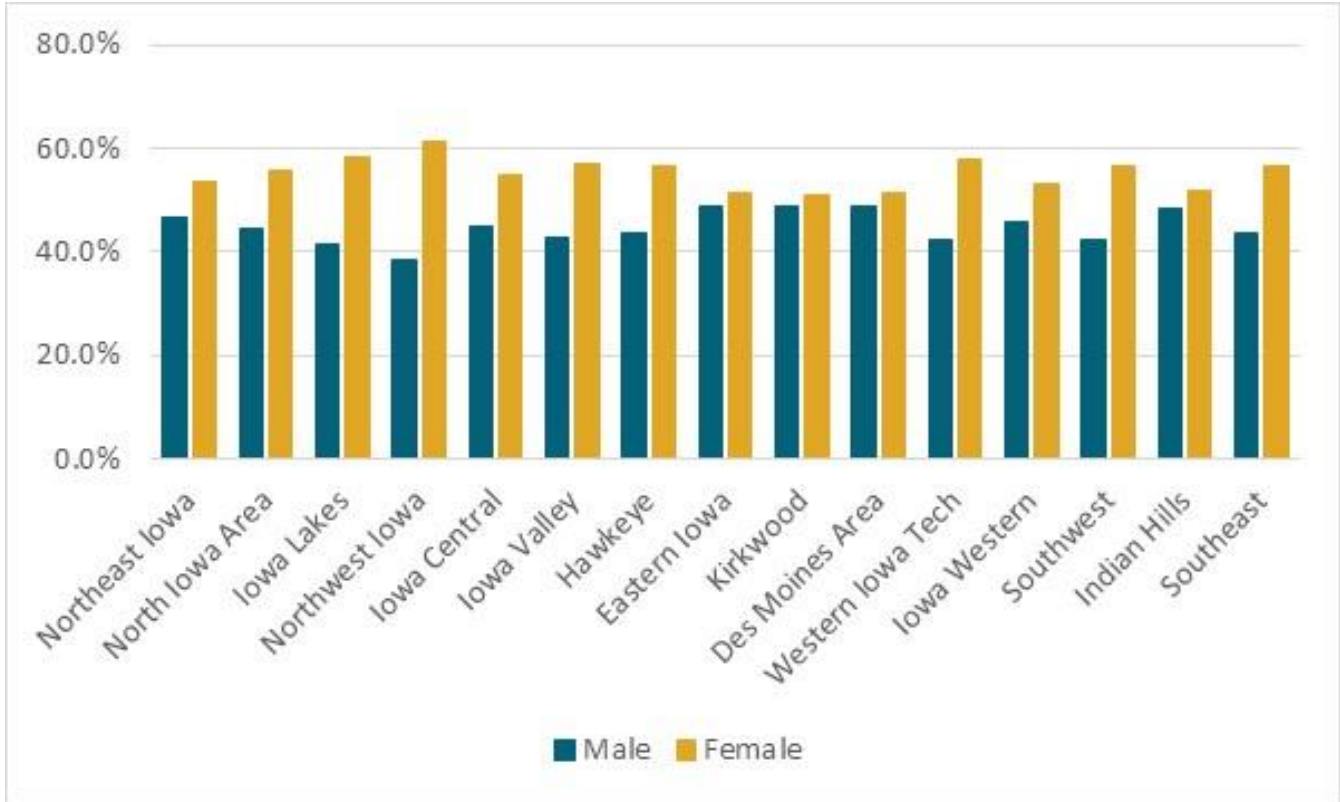
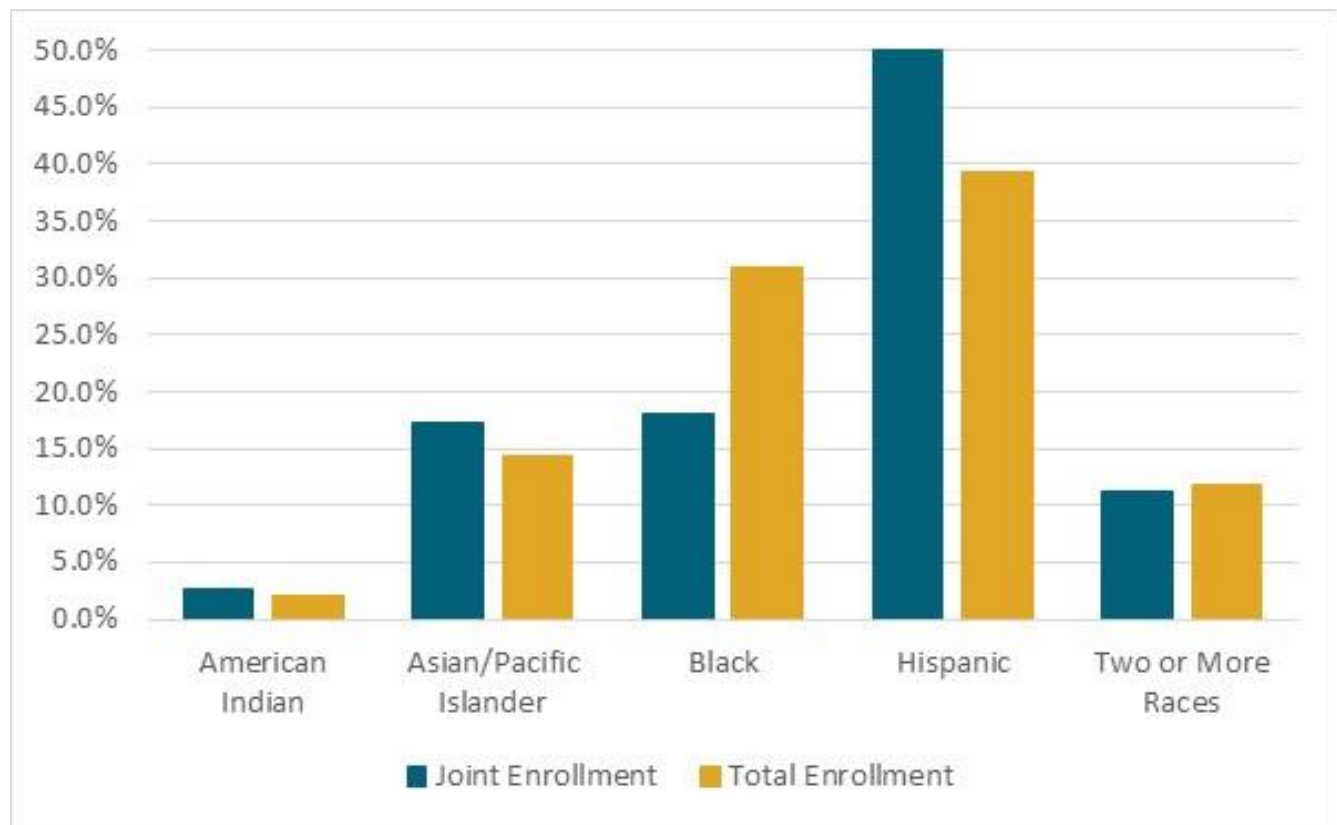


Figure 6. Jointly-Enrolled Student Minority Racial and Ethnic Background: AY 22-23

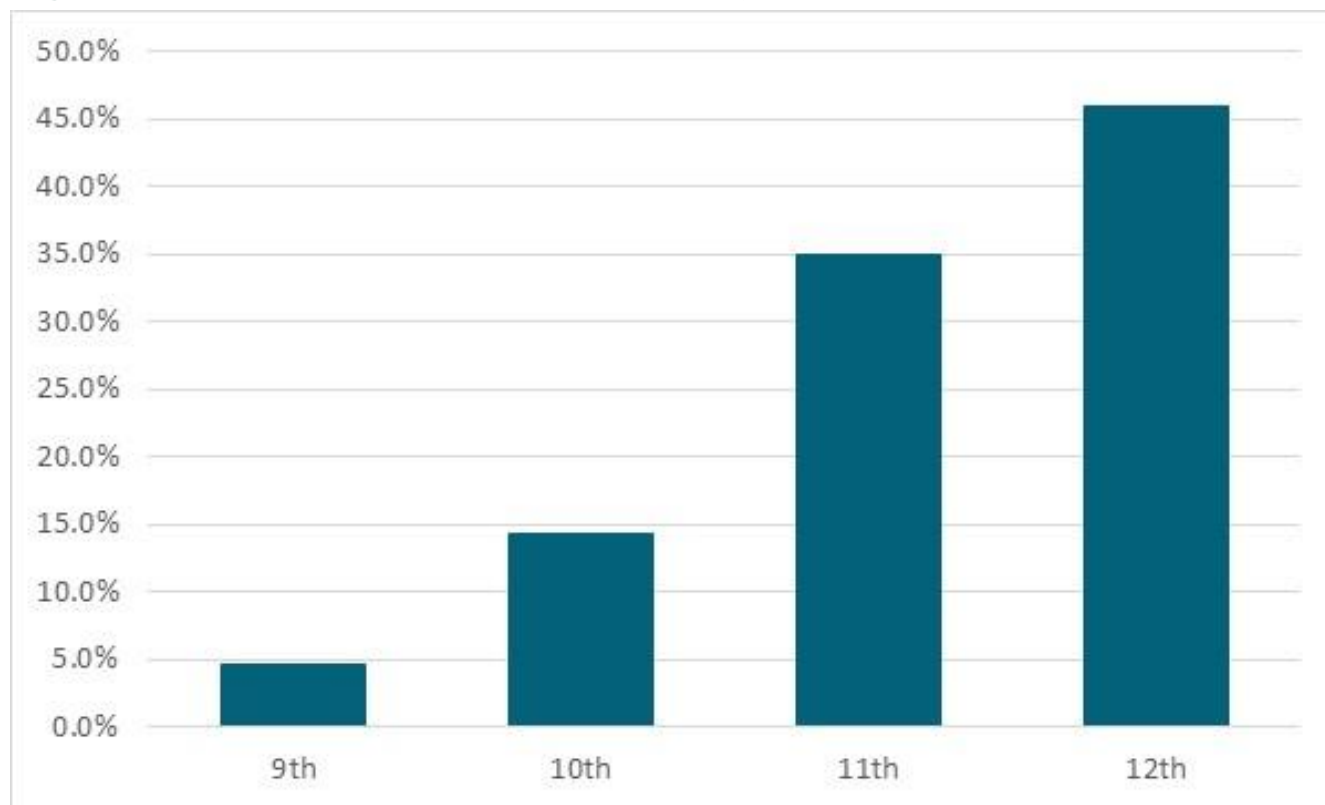


Grade Level of Jointly-Enrolled Students

The Department derives grade-level data through a match between the state's K-12 data repository and the MIS. Figure 7 displays the distribution of high school students enrolled in Iowa community colleges during AY 22-23. Jointly-enrolled students tend to be high school juniors and seniors, with 81.0 percent being in their last two years of high school. Approximately 45.9 percent of jointly-enrolled students were in 12th grade; 35.0 percent were in 11th grade; 14.3 percent were in 10th grade and 4.7 percent of jointly-enrolled students were in ninth grade.

In total, during AY 22-23, 33.8 percent of all public-school students in grades 9-12 were jointly-enrolled in community college credit courses, including more than half (53.9 percent) of all high school seniors.



Figure 7. Joint Enrollment Participation by Grade: AY 22-23

Note: Total only includes students with identical valid Iowa State Student ID numbers, and is thus smaller than the total head count for all jointly-enrolled students.

Concurrent Enrollment by Subject Area

Current enrollment courses are those that are delivered through a contractual agreement between a school district and a college. Unlike other sections of this report that use MIS data, this section is based on Student Reporting in Iowa (SRI) data submitted by Iowa public school districts.

The Department analyzed data on concurrent enrollment courses taken by subject area (Table 6). Tuition-paying students who enrolled independently of their school districts were not included in the count. Of concurrent enrollment courses taken, 24.6 percent were in English language and literature, followed by 17.8 percent in social sciences and history, 8.1 percent in mathematics and 6.0 percent in health care sciences. SRI data indicates zero instances of PSEO courses taken through Iowa's 15 community colleges in AY 22-23.

Table 7 presents community college CTE and arts and sciences courses taken by Iowa high school students through contractual agreements in AY 22-23. During that time, 34.1 percent of courses were classified as CTE, a 1.0 percent decrease from the previous year, and 65.9 percent arts and sciences, a 1.0 percent increase.

Table 6. Concurrent Enrollment Courses Taken by Subject Area: AY 22-23

Subject Area	Concurrent Enrollment	
	Number of Courses Taken	% of Total
English language and literature	34,483	24.6
Mathematics	11,326	8.1
Life and physical sciences	6,472	4.6
Social sciences and history	25,032	17.8
Fine and performing arts	3,924	2.8
Religious education and theology	460	0.3
Physical, health and safety education	2,110	1.5
Computer and information sciences	3,818	2.7
Communications and audio/visual technology	2,129	1.5
Business and marketing	6,375	4.5
Manufacturing	7,020	5.0
Health care sciences	8,479	6.0
Public, protective and government services	2,080	1.5
Hospitality and tourism	1,743	1.2
Architecture and construction	3,127	2.2
Agriculture, food and natural resources	2,558	1.8
Human services*	4,348	3.1
Transportation, distribution and logistics	3,629	2.6
Engineering and technology	3,473	2.5
Miscellaneous	4,002	2.9
World languages	3,716	2.6
Total	140,304	100

*Family Consumer Science now coded under Human Services.
Information in this table is derived from the Department's SRI database.



Table 7. CTE and Arts and Sciences Courses Taken by High School Students: AY 22-23

Community College	CTE	Arts and Sciences	Total	% CTE	% Arts and Sciences
Northeast Iowa	3,088	4,783	7,871	39.2	60.8
North Iowa Area	1,556	2,932	4,488	34.7	65.3
Iowa Lakes	746	2,615	3,361	22.2	77.8
Northwest	271	2,453	2,724	9.9	90.1
Iowa Central	2,969	4,089	7,058	42.1	57.9
Iowa Valley	887	3,123	4,010	22.1	77.9
Hawkeye	1,790	5,089	6,879	26.0	74.0
Eastern Iowa	3,425	8,827	12,252	28.0	72.0
Kirkwood	4,936	9,748	14,684	33.6	66.4
Des Moines Area	17,200	27,907	45,107	38.1	61.9
Western Iowa Tech	3,153	6,153	9,306	33.9	66.1
Iowa Western	2,282	6,423	8,705	26.2	73.8
Southwestern	1,033	2,070	3,103	33.3	66.7
Indian Hills	3,491	4,174	7,665	45.5	54.5
Southeastern	1,051	2,040	3,091	34.0	66.0
Total	47,878	92,426	140,304	34.1	65.9

Information in this table is derived from the Department's SRI database.

Concurrent Enrollment Demographics and Participation

Like the section above, this section is also based on SRI data submitted by Iowa public school districts. The information covers concurrent enrollment student participation by subgroup, such as special education students on individualized education programs (IEP), English learners (EL), students from low-income/low socioeconomic status families who receive free or reduced-price lunch (FRL) and students by race/ethnicity and gender.

Table 8 displays the distribution of all students enrolled in high school (grades 9-12), disaggregated by student subgroups, race/ethnicity and gender, compared to the distribution of all students enrolled in the concurrent enrollment program during AY 22-23. Female student participation in the concurrent enrollment program (53.0 percent) outpaced male enrollment (46.9 percent), even though female high school enrollment was lower statewide (48.4 percent) across grades 9-12.



Additionally, the racial/ethnic background of students participating in the concurrent enrollment program was less diverse than all students enrolled in grades 9-12. In AY 22-23, 18.7 percent of concurrent enrollment students reported a minority background, compared to 26.6 percent of all students enrolled in grades 9-12 in Iowa's public schools.

Table 8. Distribution of All Students Grades 9-12 Compared to All Concurrent Enrollment (CE) Students Grades 9-12: AY 22-23

	All 9-12 Students	All 9-12 Student %	All 9-12 CE Students	All 9-12 CE Student %
Total Students	156,336	100	48,762	100

Race/Ethnicity	All 9-12 Students	All 9-12 Student %	All 9-12 CE Students	All 9-12 CE Student %
Black or African American	9,953	6.4	1,504	3.1
American Indian or Alaska Native	513	0.3	98	0.2
Asian	3,744	2.4	1,392	2.9
Native Hawaiian or Other Pacific Islander	759	0.5	87	0.3
Hispanic/Latino	20,025	12.8	4,443	9.1
Two or More Races	6,659	4.3	1,580	3.2
White	114,683	73.4	39,665	81.3

Other Student Subgroups	All 9-12 Students	All 9-12 Student %	All 9-12 CE Students	All 9-12 CE Student %
IEP*	19,248	12.3	1,633	3.3
FRL**	60,843	38.9	12,282	25.2
EL	8,422	5.4	996	2.0

Gender	All 9-12 Students	All 9-12 Student %	All 9-12 CE Students	All 9-12 CE Student %
Female	75,691	48.4	25,850	53.0
Male	80,465	51.5	22,889	46.9

Information in this table is derived from the Department's SRI database.

*Disability status is determined by the presence of an IEP.

**Low socioeconomic status is determined by the eligibility for free or reduced-price lunch.

Table 9 presents concurrent enrollment participation data, both statewide and by student subgroups. In AY 22-23, a total of 156,336 students were enrolled in grades 9-12 statewide. Among those students, 48,762 participated in one or more concurrent enrollment course offerings, representing a statewide participation rate of 31.2 percent.

As noted in Table 9, white and Asian students participated in the concurrent enrollment program at higher rates than the statewide figure, at 34.6 and 37.2 percent, respectively. Students who identified as two or more races had a 23.7 percent participation rate, while Hispanic/Latino and American Indian/Alaska Native students had slightly lower participation, at 22.2 and 19.1 percent respectively.

Black and Native Hawaiian/Pacific Islander students had the lowest participation rates in the concurrent enrollment program during AY 22-23, at 15.1 percent of Black students and 11.5 percent of Native Hawaiian/Pacific Islander students.

In terms of gender, male high school students had a lower concurrent enrollment participation rate at 28.4 percent, compared to their female counterparts, 34.2 percent of whom participated these programs. Also noted in Table 9, 8.5 percent of IEP students participated in the concurrent enrollment program; along with 11.8 percent of EL students and 20.2 percent of FRL students.

Table 9. Concurrent Enrollment (CE) Participation Rates by Race/Ethnicity, Gender, IEP, FRL and EL: AY23

	All 9-12 Students	All 9-12 CE Students	% CE Student Participation
Total Students	156,336	48,762	31.2

Race/Ethnicity	All 9-12 Students	All 9-12 CE Students	% CE Student Participation
Black or African American	9,953	1,504	15.1
American Indian or Alaska Native	513	98	19.1
Asian	3,744	1,392	37.2
Native Hawaiian or Other Pacific Islander	759	87	11.5
Hispanic/Latino	20,025	4,443	22.2
Two or More Races	6,659	1,580	23.7
White	114,683	39,665	34.6

Other Student Subgroups	All 9-12 Students	All 9-12 CE Students	% CE Student Participation
IEP **	19,248	1,633	8.5
FRL ***	60,843	12,282	20.2
EL	8,422	996	11.8

Gender	All 9-12 Students	All 9-12 CE Students	% CE Student Participation
Female	75,691	25,850	34.2
Male	80,465	22,889	28.4

Information in this table is derived from the Department's SRI database.

Disability status is determined by the presence of an IEP. **

Low socioeconomic status is determined by the eligibility for free or reduced-price lunch. ***

Revenue from Concurrent Enrollment

Concurrent enrollment is one of several sharing opportunities incentivized by state policy. School districts may be eligible for additional funding through supplemental weighting in the school foundation funding formula for students participating in certain programs, including concurrent enrollment. In this case, the supplementary weighting provides school districts with funding to pay community colleges for delivery of concurrent enrollment courses.

In AY 22-23, community colleges generated more than \$44 million in revenue from concurrent enrollment courses. In total, 352 high schools enrolled 52,814 students in concurrent enrollment courses (Table 10). Since a high school may be served by more than one community college, the number of high schools listed in Table 10 is considered a “duplicated” count, and is greater than the number of school districts statewide (304 school districts).

High school students also have the opportunity to enroll in college courses through PSEO, provided the school district does not offer a comparable course (including concurrent enrollment offerings). Under a PSEO arrangement, the school district pays the eligible postsecondary institution the cost of the course or \$250, whichever is lower. As noted earlier, due to statutory changes, no students enrolled in community college coursework through PSEO during AY 22-23.

Table 10. Enrollment and Revenue of Concurrent Enrollment: AY 22-23

Community College	Number of High Schools Served*	Total Revenue (\$)	High School Student Headcount (Unduplicated)	Number of Course Sections (Duplicated)	% Taught by High School Instructor
Northeast Iowa	24	2,043,721.00	3,186	1,270	35
North Iowa Area	17	2,683,157.00	1,507	888	12
Iowa Lakes	13	1,409,581.00	971	535	11
Northwest Iowa	14	1,251,128.00	1,256	435	10
Iowa Central	20	1,601,615.00	2,273	1,544	16
Iowa Valley	14	1,333,188.00	1,404	1,491	6
Hawkeye	23	1,890,445.00	3,023	1,365	39
Eastern Iowa	18	3,539,381.00	5,173	571	86
Kirkwood	47	6,253,215.40	5,921	4,581	10
Des Moines Area	61	9,691,188.00	17,858	8,515	28
Western Iowa Tech	19	2,873,485.00	3,195	2,560	9
Iowa Western	25	3,520,696.00	2,824	1,271	13
Southwestern	23	1,707,085.00	903	1,108	9
Indian Hills	22	3,127,343.82	1,941	1,921	24
Southeastern	12	1,143,909.00	1,379	1,202	11
Total	352	44,069,138.22	52,814	29,257	21

*A high school may be served by more than one community college and therefore, may appear in the total of more than one community college.

Community College Profiles

Joint enrollment participation at each of Iowa's 15 community colleges can be viewed on the [Iowa Student Outcomes website](#). Each community college profile contains information related to joint enrollment by offering arrangement, credit hours, grade level participation, gender of students, race/ethnicity of students and participation in coursework by subject area.



FIGURE 3-18: PERCENT OF HIGH SCHOOL STUDENTS (9-12 GRADES) ENROLLMENT IN IOWA COMMUNITY COLLEGES DURING AY 2022 - 2023

