

Iowa 2023 spring student assessment results

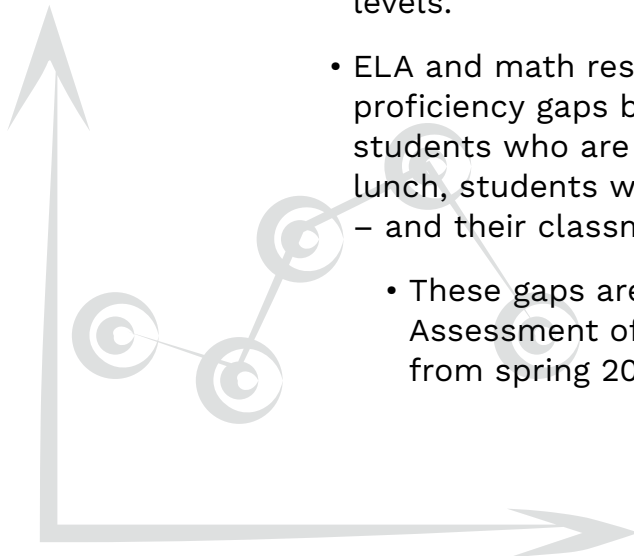


Spring 2023 assessment results from the Iowa Statewide Assessment of Student Progress for students in grades 3-11 show little improvement over last year with significant proficiency gaps between certain groups of students.

What do the results show?

When examining Iowa Statewide Assessment of Student Progress (ISASP) results from spring 2023 compared to spring 2022:

- English language arts (ELA) results were largely the same.
- Math results showed improvement across all grade levels.
- ELA and math results both show significant proficiency gaps between student groups – including students who are eligible for free or reduced price lunch, students with disabilities, and English learners – and their classmates.
- These gaps are also present in Iowa’s National Assessment of Educational Progress (NAEP) results from spring 2022.

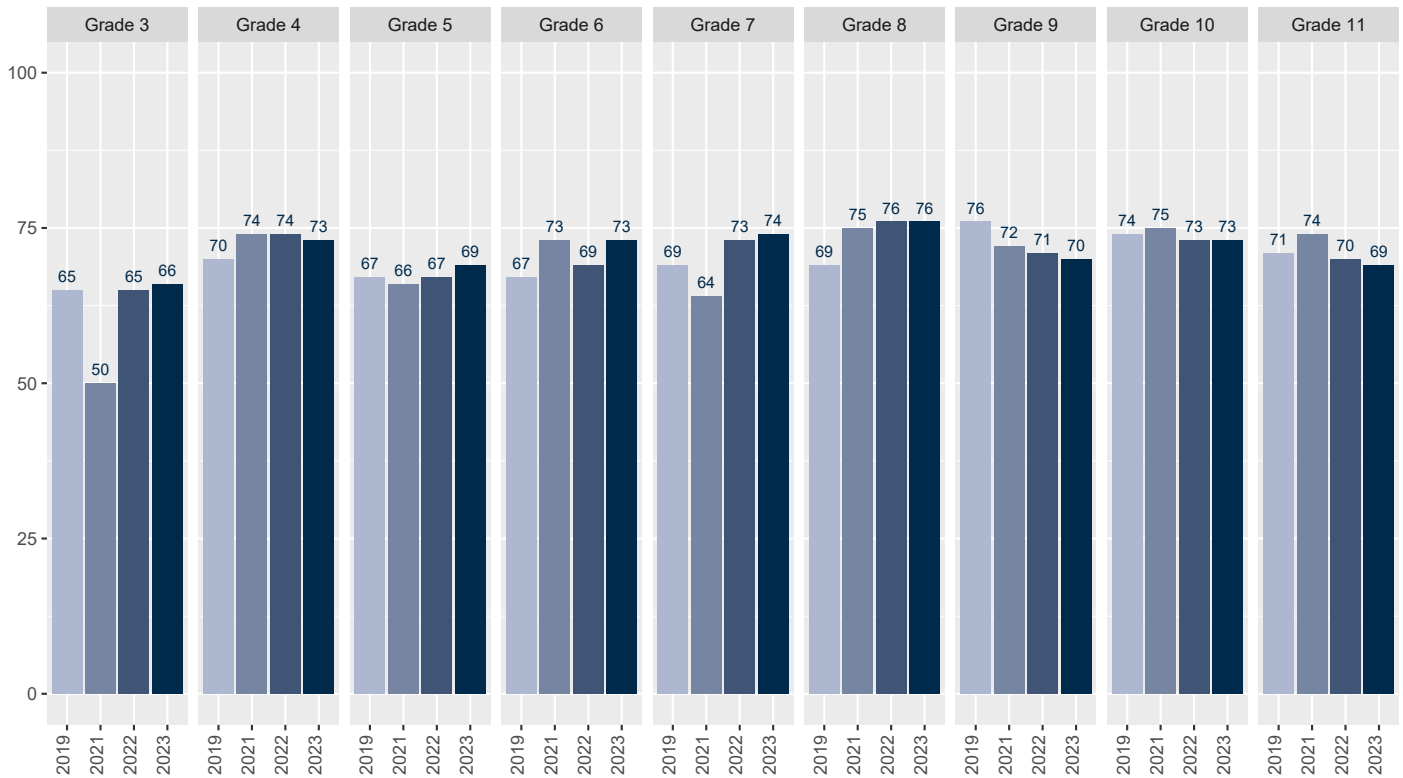


English Language Arts (ELA) Achievement

Spring 2023 ELA proficiency rates were within two percentage points of spring 2022 rates in all grade levels with the exception of grade 6, which had a four percentage point increase.

Comparing spring 2021 results to pre-pandemic results from 2019 indicate COVID-19 had a limited impact on Iowa students' ELA achievement with the exception of declines in grade 3 (15 percentage points), grade 7 (5 percentage points) and grade 9 (4 percentage points). By spring 2023, six out of the nine tested grade levels had ELA proficiency rates at or above those from spring 2019.

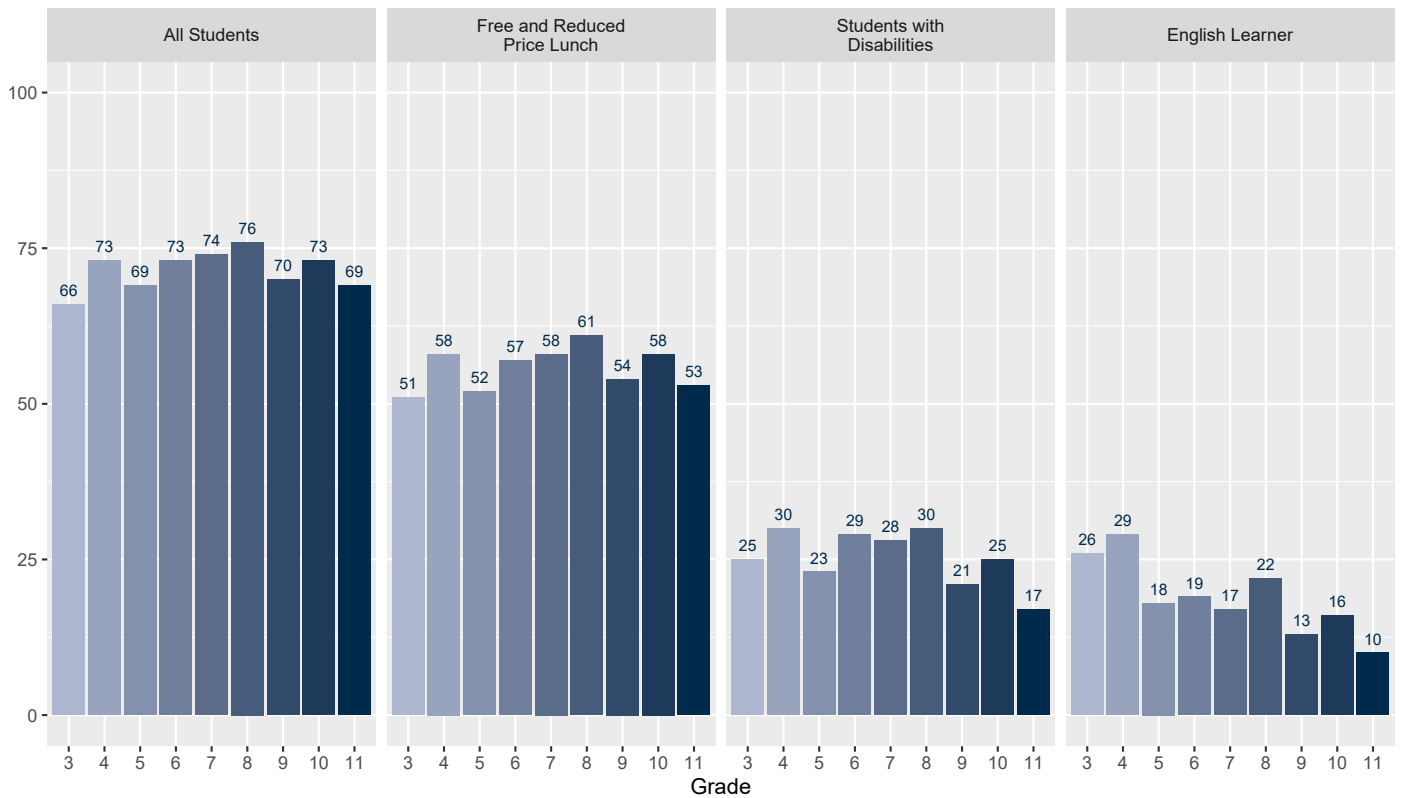
ISASP ELA Proficiency by Year – All Students



English Language Arts (ELA) results by student group

However, when broken down further, the 2023 ELA results show significant proficiency gaps between some student groups and their classmates, including students who were eligible for free or reduced price lunch (15 to 17 percentage point difference), students with disabilities (41 to 52 percentage point difference) and English learners (40 to 59 percentage point difference).

ELA – Percent Proficient or Above Spring 2023 by Student Group

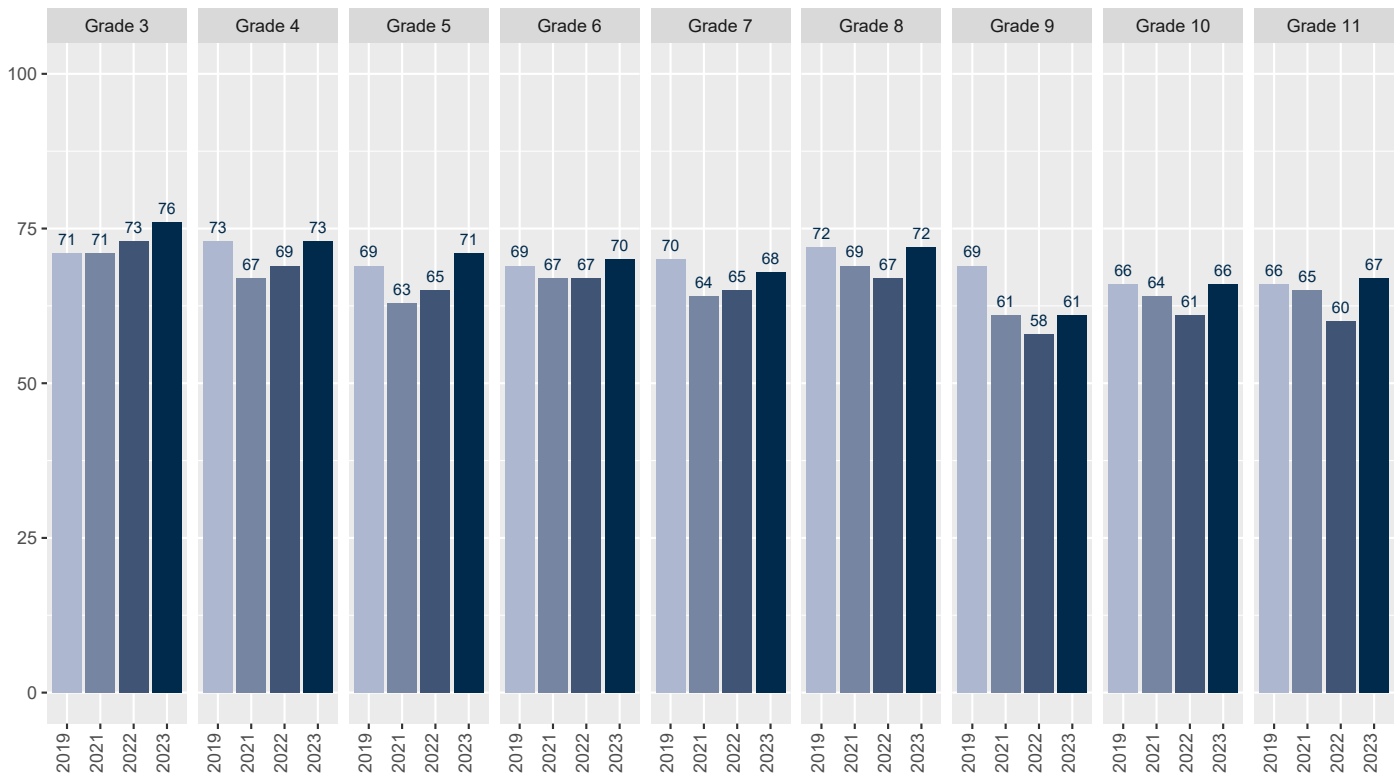


Math Achievement

Spring 2023 math proficiency rates improved from spring 2022 (at least three percentage points) across all grade levels. The largest improvements were in Grade 5 (six percentage points), Grades 8 and 10 (five percentage points) and Grade 11 (seven percentage points).

After two years of declines, the 2023 math proficiency rates show students across most grade levels performing similarly to 2019 pre-pandemic levels with the exception of significant declines in Grade 9 (eight percentage points since 2019). In spring 2023, long-term trends in math proficiency show 4 grade levels higher, 3 grades the same, and 2 lower than in 2019.

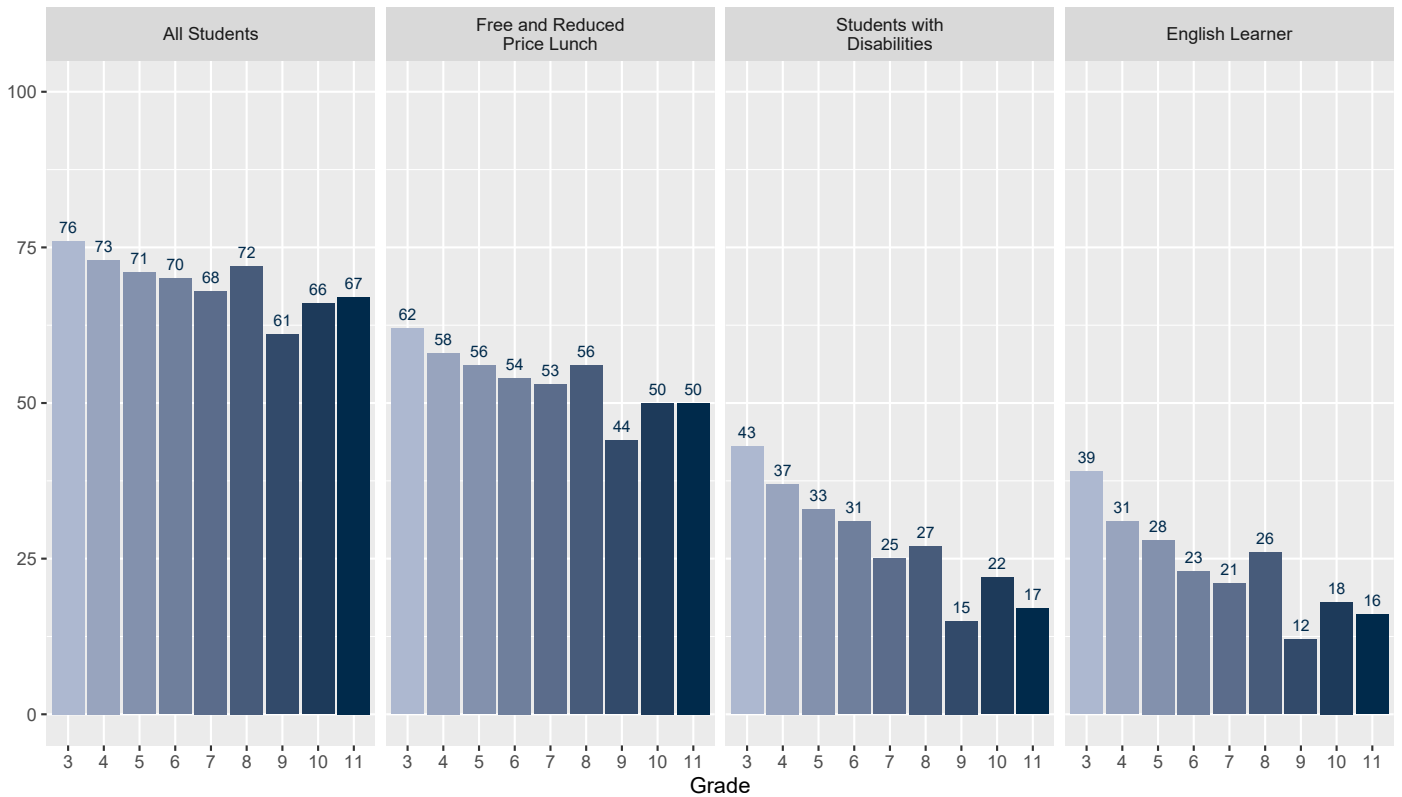
ISASP Math Proficiency by Year – All Students



Math results by student group

Like ELA, math results show significant proficiency gaps between some student groups and their classmates, including students who are eligible for free or reduced price lunch (14 to 17 percentage point difference), students with disabilities (33 to 50 percentage point difference) and English learners (37 to 51 percentage point difference).

Math – Percent Proficient or Above Spring 2023 by Student Group



What is the Iowa Statewide Assessment of Student Progress (ISASP)

The ISASP is administered each spring and is the general summative accountability assessment in Iowa that meets the requirements of the federal Every Student Succeeds Act (ESSA). The ISASP reflects what's being taught in Iowa classrooms and how students are progressing toward grade-level expectations outlined in Iowa's academic standards. The ISASP is a measure that helps teachers understand where students are succeeding and where they may need more help.

ISASP data will inform the Department's work to support school improvement and efforts to ensure resources are targeted to those communities, schools and students most in need.



What is the state participation rate?

Iowa's state ISASP participation rate was 99 percent in 2022-23, 98 percent in 2021-22 and 98 percent in 2020-21, ensuring that the results yielded a true picture of student performance.

2022 NAEP Results

The National Assessment of Educational Progress (NAEP) is a nationally representative assessment that allows for the comparison of Iowa students' performance in mathematics and reading to other states. Conducted every two years, Iowa's 2022 NAEP results also show significant proficiency gaps between student groups, with nearly all Iowa student groups falling below Iowa's all-student ranking. Overall, Iowa's NAEP rankings declined in both reading and math from grade 4 to grade 8.

While Iowa's 2022 NAEP ranking improved from 2019, this increase was primarily because nearly all other states performed lower in 2022 while Iowa experienced limited COVID-19 learning loss due to access to in-person instruction.

2022 Iowa NAEP Average Scale Score State Ranking by Student Group

Grade/Content	Grade 4 Reading	Grade 8 Reading	Grade 4 Math	Grade 8 Math
All Students	15	20	7	15
Free or Reduced Lunch	15	30	10	33
Students with Disabilities	40	31	23	27
English Learners	44	39	40	31
White	34	38	27	26
Hispanic	32	28	21	37
Black	30	30	27	28
Two or More Races	17	37	28	37

For more information

The Department of Education website has the [spring 2022-23 ISASP results](#). Contact Jay Pennington, Bureau Chief of Information and Analysis Services, at jay.pennington@iowa.gov.