

FALL ENROLLMENT REPORT

2014



Community Colleges

www.educateiowa.gov/ccpublications/

STATE OF IOWA
DEPARTMENT OF EDUCATION
GRIMES STATE OFFICE BUILDING
DES MOINES, IOWA
50319-0146

State Board of Education

Charles C. Edwards, Jr., President, Des Moines
Michael L. Knedler, Vice President, Council Bluffs
Brooke Axiotis, Des Moines
Michael Bearden, Gladbrook
Diane Crookham-Johnson, Oskaloosa
Angela English, Dyersville
Rosie Hussey, Clear Lake
Mike May, Spirit Lake
Mary Ellen Miller, Wayne County
Hannah Rens, Student Member, Sioux City

Administration

Brad A. Buck, Director and Executive Officer
of the State Board of Education

Division of Community Colleges

Jeremy Varner, Administrator

Bureau of Community Colleges

Kent Farver, Bureau Chief
Monte Burroughs, Consultant

Phone: 515-281-8260
Fax: 515-242-5988
www.educateiowa.gov

Jeremy Varner
Administrator
515-281-8260
jeremy.varner@iowa.gov

Kent Farver
Bureau Chief
515-281-0319
kent.farver@iowa.gov

Monte Burroughs
Consultant
515-281-3753
monte.burroughs@iowa.gov

Published:
November 2014



It is the policy of the Iowa Department of Education not to discriminate on the basis of race, creed, color, sexual orientation, gender identity, national origin, sex, disability, religion, age, political party affiliation, or actual or potential parental, family or marital status in its programs, activities, or employment practices as required by the Iowa Code sections 216.9 and 256.10(2), Titles VI and VII of the Civil Rights Act of 1964 (42 U.S.C. § 2000d and 2000e), the Equal Pay Act of 1973 (29 U.S.C. § 206, et seq.), Title IX (Educational Amendments, 20 U.S.C. §§ 1681 – 1688), Section 504 (Rehabilitation Act of 1973, 29 U.S.C. § 794), and the Americans with Disabilities Act (42 U.S.C. § 12101, et seq.). If you have questions or complaints related to compliance with this policy by the Iowa Department of Education, please contact the legal counsel for the Iowa Department of Education, Grimes State Office Building, 400 E. 14th Street, Des Moines, IA 50319-0146, telephone number: 515-281-5295, or the Director of the Office for Civil Rights, U.S. Department of Education, Citigroup Center, 500 W. Madison Street, Suite 1475, Chicago, IL 60661-4544, telephone number: 312-730-1560, FAX number: 312-730-1576, TDD number: 877-521-2172, email: OCR.Chicago@ed.gov.

Executive Summary

This report summarizes several aspects of community college enrollment from fall 2014. Some highlights from this report include:

- Fall 2014 enrollment was 93,772 students — a decline of 0.49 percent from last fall.
- Enrollment continues to exceed pre-recession levels, but is down markedly from peak enrollment in fall 2010, particularly for students over age 24.
- Compared to fall 2013, registered semester hours fell 4.6 percent to 832,234, and declined at 11 of the 15 community colleges.
- The typical student is a white (77 percent) female (54 percent) from Iowa (91 percent) whose average age is 21.6 years, and enrolled part-time (60 percent) in a transfer-oriented college parallel program (68 percent).
- A total of 27,455 students enrolled in at least one online course, accounting for almost 30 percent of total enrollment.
- Health science remained the largest career and technical education (CTE) career cluster; manufacturing was second; business management and administration was third.
- Enrollment of high school students (joint enrollment) increased 12.2 percent from fall 2013, to 31,446 students.
- Next fall, between 90,427 and 98,195 students are predicted to enroll in Iowa's community colleges.

About this Report:

This report summarizes and analyzes fall enrollment in Iowa's community colleges. Each year, Iowa's 15 community colleges submit data on enrollment on the 10th business day of the fall semester.

Students

Fall enrollment for 2014, summarized in Table 1, was 93,772 students, compared to 94,234 students last fall, a change of -0.49 percent.

Enrollment declines are rare in the history of Iowa's modern community college system — occurring after countercyclical enrollment surges during economic recessions. Figure 1 displays enrollment data since 1965. The most recent recession created an unprecedented spike in 2009 and 2010 with enrollment declining and stabilizing in subsequent years. Total enrollment remains above pre-recession levels, although some institutions continue to experience more significant declines than others.

Although overall fall enrollment has increased more than 10-fold since 1965, the number of full-

time students as a percent of total fall enrollment has steadily declined from 90.8 percent in 1965 to 40.5 percent in 2014 (Figure 2). This fall, 55,767 students enrolled on a part-time basis (fewer than 12 semester credit hours), accounting for 59.5 percent of total enrollment. Last fall, 52,048 part-time students accounted for 55.2 percent of total fall enrollment. Enrollment of full-time students this fall was 38,005 students (40.5 percent of total enrollment) compared to 42,186 students (44.8 percent of total enrollment) last fall.

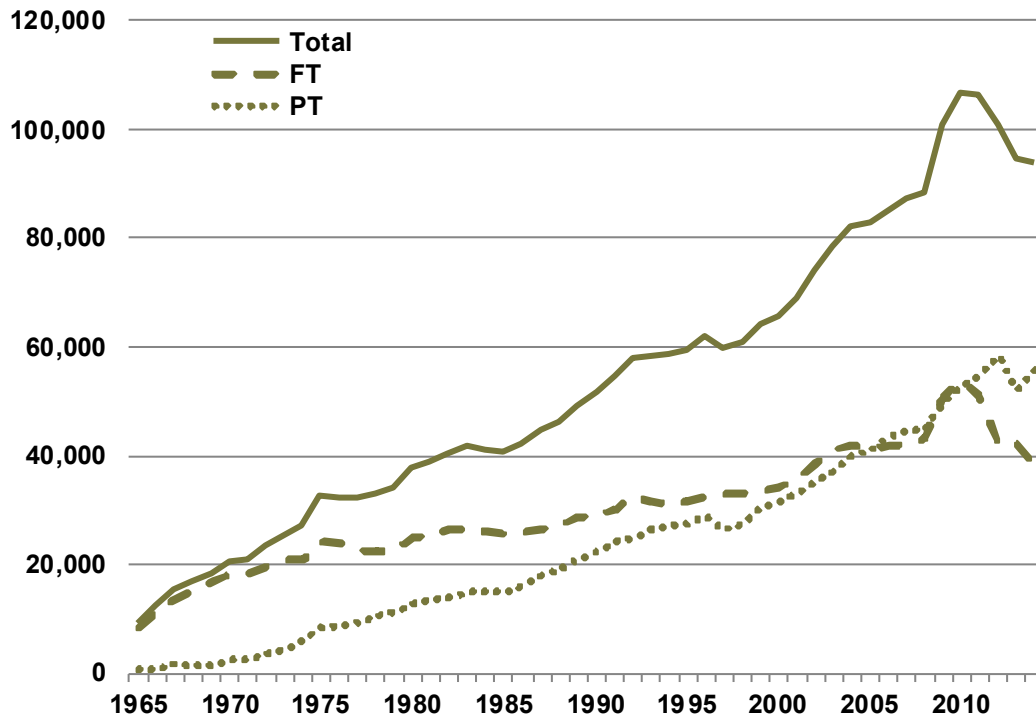
This fall, almost 54 percent of students were female, which is consistent with state and national trends in postsecondary education. Self-reported race and ethnicity by gender are shown in Table 2.

The proportion of students with minority racial or ethnic backgrounds attending Iowa's community colleges (17.7 percent) this fall is higher than the proportion of minorities in Iowa's

Table 1. Fall 2014 enrollment by college.

College	Total	Full-time		Part-time		Change (%) ^a
		N	%	N	%	
Northeast Iowa	4,934	1,642	33.3	3,292	66.7	-5.1
North Iowa Area	2,950	1,420	48.1	1,530	51.9	-8.0
Iowa Lakes	2,391	1,154	48.3	1,237	51.7	-9.8
Northwest	1,576	575	36.5	1,001	63.5	-1.9
Iowa Central	5,686	3,011	53.0	2,675	47.0	-0.2
Iowa Valley	2,987	1,545	51.7	1,442	48.3	-4.9
Hawkeye	5,291	2,655	50.2	2,636	49.8	-8.8
Eastern Iowa	8,143	2,657	32.6	5,486	67.4	-6.3
Kirkwood	14,268	5,110	35.8	9,158	64.2	-7.0
Des Moines Area	23,526	7,566	32.2	15,960	67.8	16.7
Western Iowa Tech	6,398	2,412	37.7	3,986	62.3	1.1
Iowa Western	6,623	3,611	54.5	3,012	45.5	-5.3
Southwestern	1,600	764	47.8	836	52.3	1.7
Indian Hills	4,412	2,456	55.7	1,956	44.3	-4.2
Southeastern	2,987	1,427	47.8	1,560	52.2	-7.4
Total	93,772	38,005	40.5	55,767	59.5	-0.5

^a Percentage change in total enrollment from fall 2013.

Figure 1. Fall enrollment since 1965.

general population (11.6 percent). These percentages have been relatively stable since fall 2012. African-American and Hispanics students accounted for 6.4 percent of total enrollment per group. Asian/Pacific Islanders accounted for 2.5

percent of total enrollment.

Residents of Iowa accounted for over 90 percent of students. Out-of-state residents accounted for 7.9 percent of enrolled students, with foreign nationals accounting for the balance.

Table 2. Fall 2014 distribution by race and ethnicity.

Subpopulation	Females	Males	Not reported	Row totals
American Indian	317	276	0	593
Asian	1,095	1,150	0	2,245
Black	2,836	3,186	0	6,022
Hispanic	3,174	2,781	3	5,958
Pacific Islander	66	58	0	124
White	39,929	32,611	14	72,554
Two or more	921	766	1	1,688
Not reported	2,266	2,244	78	4,588
Column totals	50,604	43,072	96	93,772

Average age of community college students this fall was 21.6 years. The median age was 19 years.

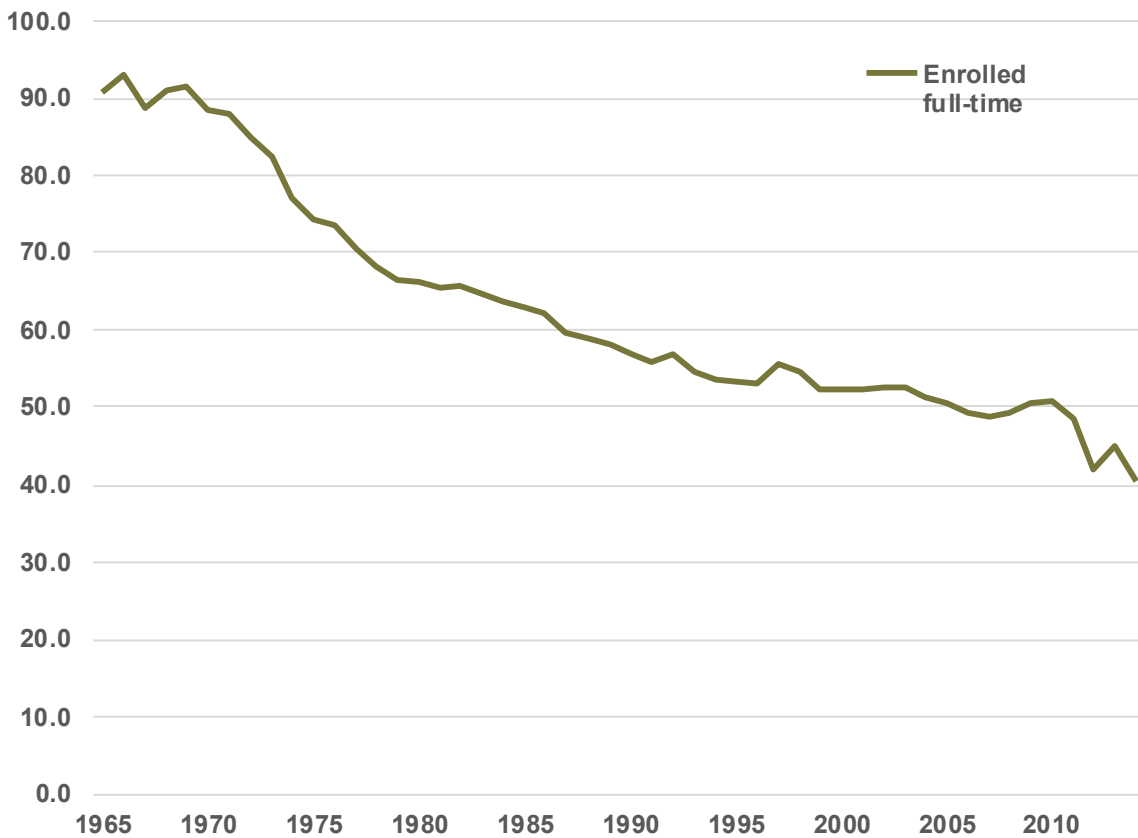
Academics

Students attending Iowa's community colleges this fall registered for 832,234 semester hours, compared to 872,746 semester hours last fall. This fall, part-time students registered for 307,996 semester hours, As Table 3 indicates, part-time students accounted for 37 percent of total semester hours. Average course load for part-time students

this fall was 5.5 semester hours. Last fall, part-time students registered for 291,053 semester hours (33.3 percent of total semester hours), averaging 5.6 semester hours.

Full-time students registered for 524,238 semester hours, accounting for 63 percent of total semester hours. Average course load for full-time students this fall was 13.8 semester hours. Last fall, full-time students registered for 581,693 semester hours (66.7 percent of total semester hours), yielding an average course load of 13.8 semester hours per full-time student.

Figure 2. Full-time enrollment as a percentage of total since 1965.



Program Types

Programs of study are generally categorized as college parallel (transfer), career and technical education (CTE), or career option. College parallel programs prepare students for matriculation to four-year colleges or universities. CTE programs prepare students for entry into the workforce as skilled technicians or similar middle skill careers. Career option programs prepare

students for matriculation to a four-year university or entry into a career field after graduation.

College parallel programs are the largest category, with 63,357 enrolled students this fall. Last fall, 61,866 students enrolled in this category. College parallel programs accounted for 67.6 percent of this fall's total enrollment. The number of students enrolled in college parallel programs this fall represents a 2.4 percent increase from last fall.

Table 3. Summary of fall 2014 semester hours by college.

College	Hours	FT (%) ^a	PT (%) ^b	Change (%) ^c
Northeast Iowa	41,323	57.1	42.9	-6.9
North Iowa Area	28,546	72.3	27.7	-8.7
Iowa Lakes	24,519	72.7	27.3	-11.1
Northwest	13,887	65.0	35.0	-4.6
Iowa Central	58,303	75.4	24.6	0.5
Iowa Valley	30,258	74.2	25.8	-5.8
Hawkeye	52,961	70.7	29.3	-9.8
Eastern Iowa	65,438	54.7	45.3	-9.0
Kirkwood	122,766	56.7	43.3	-16.4
Des Moines Area	190,915	53.5	46.5	7.3
Western Iowa Tech	55,985	60.4	39.6	0.9
Iowa Western	69,220	74.7	25.3	-4.1
Southwestern	15,855	70.8	29.2	3.6
Indian Hills	33,331	74.3	25.7	-3.7
Southeastern	28,927	69.6	30.4	-8.9
Total	832,233	63.0	37.0	-4.6

^a Percentage of hours attributed to full-time students.

^b Percentage of hours attributed to part-time students.

^c Percentage change in total hours from fall 2013.

This fall 28,020 students enrolled in CTE programs, accounting for 29.9 percent of total enrollment. Last fall, 28,876 students enrolled in CTE programs. The number of students enrolled in CTE programs this fall represents 3.0 percent decrease from last fall.

Total enrollment this fall in career option programs was 2,368 students, accounting for 2.5 percent of total enrollment. Last fall, 3,403 students enrolled in career option programs. The Department of Education is phasing out career option programs, which is reflected in the 30.4 percent decline in the number of students enrolled career option programs.

Online Enrollment

Online enrollment is defined as participation in a class that is only offered via the Internet with no face-to-face contact between the instructor and students. Table 4 summarizes online hours and enrollment for fall 2014.

This fall, 27,455 students (29.3 percent) enrolled in at least one online course, compared to

27,791 students (29.5 percent) who did so last fall. This difference represents a year-to-year decrease of 1.2 percent.

Students registered for 140,837 semester hours of online courses, compared to 144,271 semester hours last fall. Semester hours attributed to online courses, shown in Table 4, accounted for 16.9 percent of total semester hours this fall. Last fall, semester hours attributed to online courses accounted for 16.5 percent of total registered semester hours. On average, each student enrolled in 5.1 semester hours of online courses this fall.

Career Clusters

The Iowa Department of Education categorizes career and technical education (CTE) programs into 16 career clusters. Each major aligns to a category of similar programs. Visit www.careerclusters.org for more information about career clusters.

Historically, categories with the largest enrollments have been business management and administration, health science, and manufacturing.

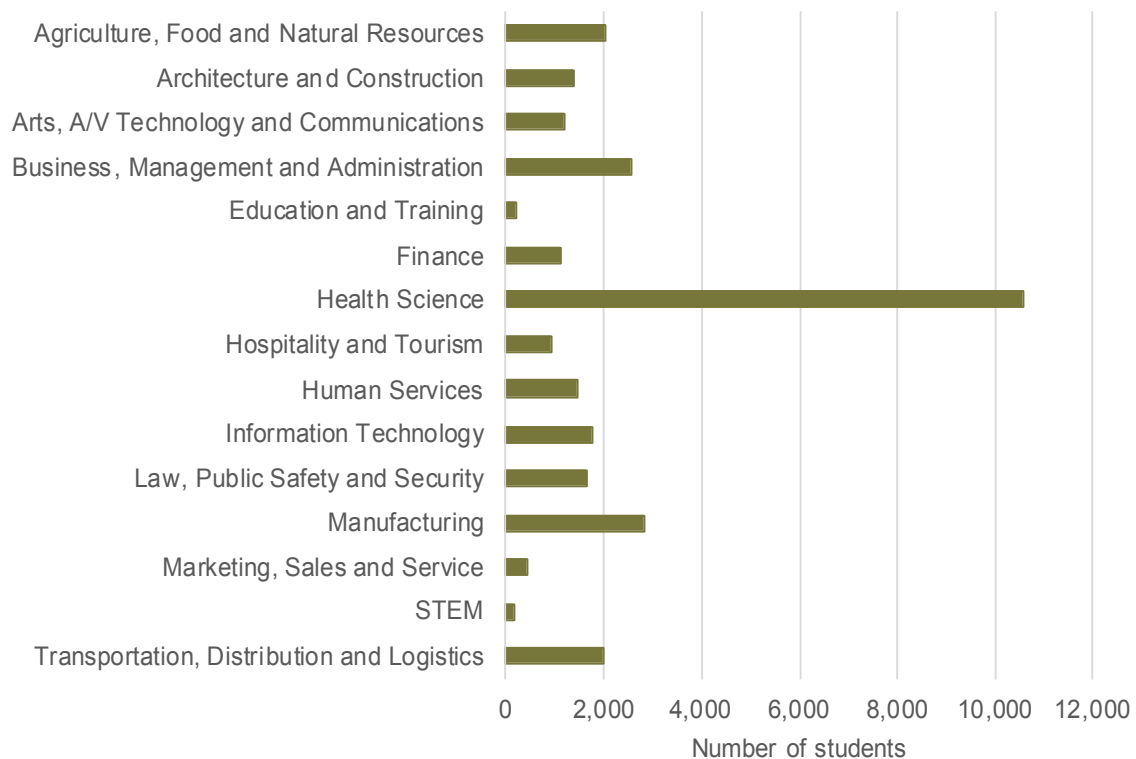
Table 4. Fall 2014 online hours and enrollment by college.

College	Hours	Enrollment	Enrollment (%)	
			Of total	Change
Northeast Iowa	8,060	1,532	31.0	-1.4
North Iowa Area	4,615	1,410	47.8	-10.2
Iowa Lakes	4,053	784	32.8	1.7
Northwest Iowa	4,144	826	52.4	2.4
Iowa Central	7,867	1,421	25.0	6.3
Iowa Valley	5,825	1,235	41.3	-1.6
Hawkeye	6,790	1,439	27.2	-7.5
Eastern Iowa	15,014	2,501	30.7	-2.8
Kirkwood	12,590	2,599	18.2	-15.9
Des Moines Area	28,854	5,526	23.5	3.5
Western Iowa Tech	14,289	2,588	40.5	3.2
Iowa Western	13,692	2,493	37.6	8.6
Southwestern	3,279	660	41.3	1.9
Indian Hills	5,331	1,339	30.3	-5.3
Southeastern	6,436	1,102	36.9	2.3
Total	140,839	27,455	29.3	-1.2

As Figure 3 indicates, this fall is no exception. Last fall, 11,704 students enrolled in health sciences, 4,059 in business management and administration, and 2,893 in manufacturing. This fall 10,581 students enrolled in health sciences —

down 9.6 percent from last fall; 2,540 students enrolled in business management and administration; and 2,839 students enrolled in manufacturing.

Figure 3. Fall 2014 enrollment by career category.



Joint Enrollment

Community colleges offer high school students three joint enrollment options, giving students opportunities to earn college credit. Under the postsecondary enrollment option (PSEO), school districts pay up to \$250 per course. Contracted courses between high schools and community colleges often provide supplementary weighting. Students may independently as tuition paying students. Students may participate in more than one joint enrollment program during an academic year.

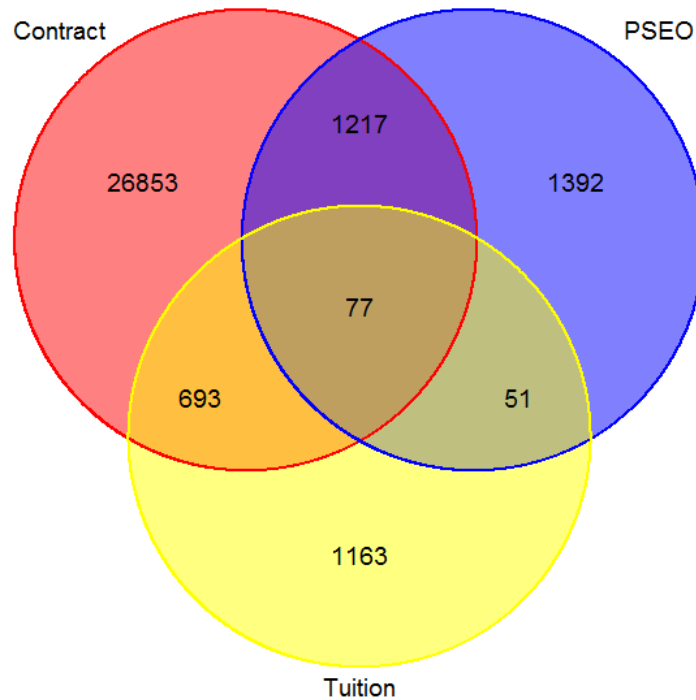
After successfully completing a course, a student may apply earned credit for that course toward a diploma or associate degree. A student may also choose to transfer earned credits to a four-year college or university.

This fall, 31,446 high school students participated in at least one joint enrollment program, compared to 28,028 participants last fall. Students participating in joint enrollment programs accounted for 33.5 percent of this fall's enrollment, compared to 29.7 percent last fall.

Figure 4 shows how many students participated in the various combinations of joint enrollment programs. Overlapping participation in contracted courses accounted for over 90 percent of enrollment. Students who participated only through contracted courses accounted for over 85 percent of enrollment.

High school students who participated in joint enrollment programs this fall registered for 154,472 semester hours of classes, compared to 132,684 semester hours last fall. The number of semester hour attributed to joint enrollment

Figure 4. Participants per joint enrollment category in fall 2014.



programs this fall accounted for 18.6 percent of total registered semester hours, compared to 15.2 percent last fall.

Trends

After spiking to 106,597 students in 2010, fall enrollment has steadily declined 12 percent to its current position of 93,772 students, despite an increase of over 15 percent in joint enrollment during the same time period. Fall 2014 enrollment is 6.4 percent above pre-recession fall 2008 enrollment which totaled 88,104 students.

Table 5 displays changes in enrollment based upon age (students 18-23 years old versus students 24 years and older), enrollment status (full-time versus part-time), and program of study (career technical education versus arts and science).

As Figure 5 shows, participation in joint enrollment (JE) programs steadily increases from fall 2010 to fall 2014. Among students age 18 to 23, full-time enrollment has decreased by 22 percent while part-time enrollment has risen 15 percent. Table 6 summarizes fall enrollment by category for each community college and respective percentage change since fall 2010. Enrollment dropped between 16 and 45 percent across all four categories among students who were 24 years or older. This generated an overall decline of 31.6 percent from peak fall 2010 to fall 2014. Enrollment dropped about 44 percent among full-time CTE students and about 45 percent among part-time arts and science students for this age group.

Figure 5 displays fall enrollment by category, 2008-2014. Figure 6 displays the annual percentage change in enrollment by age category during the same period.

Table 5. Cumulative changes in enrollment from peak 2010 to 2014 by age groups, program of study, and enrollment status.

Category	<u>Ages 18-23</u>		
	Fall 2010	Fall 2014	Change (%)
CTE FT	13,851	10,773	-22.2
CTE PT	4,001	4,583	14.5
Art/Science FT	18,942	14,781	-22.0
Art/Science PT	6,328	7,211	14.0
Total	43,122	37,348	-13.4
	<u>Ages 24+</u>		
CTE FT	10,809	6,058	-44.0
CTE PT	7,683	6,452	-16.0
Art/Science FT	8,116	6,574	-19.0
Art/Science PT	6,520	3,574	-45.2
Total	33,128	22,658	-31.6

Note: Numbers are duplicated because some students were counted in more than one category.

Figure 5. Fall enrollment by age category.

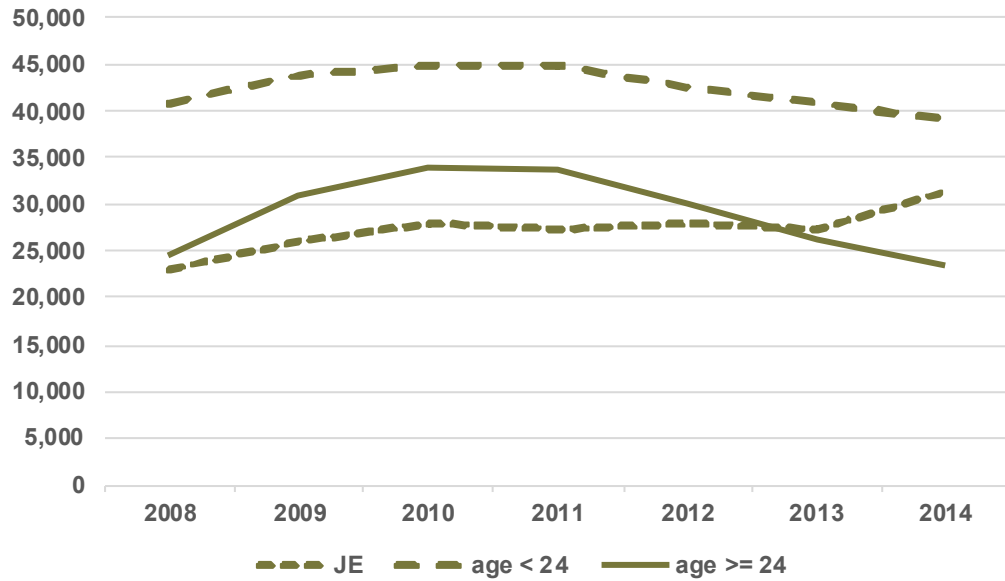


Figure 6. Annual percentage change in fall enrollment by age category.

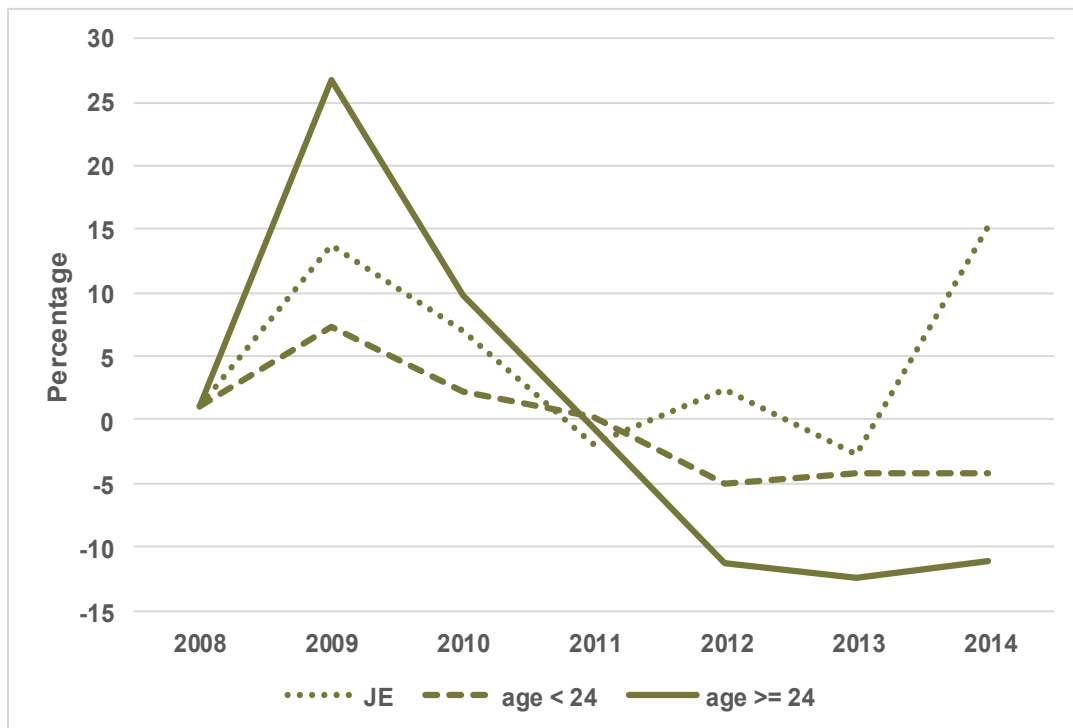


Table 6. Fall 2014 enrollment by category and community college.

College	JE ^a	Ages 18-23		Ages 24+
Northeast Iowa	2,124	1,739	1,071	
North Iowa Area	975	1,376	599	
Iowa Lakes	881	1,075	435	
Northwest	717	613	246	
Iowa Central	2,060	2,619	1,007	
Iowa Valley	1,048	1,389	550	
Hawkeye	1,094	2,851	1,346	
Eastern Iowa	2,861	2,838	2,444	
Kirkwood	3,508	6,841	3,919	
Des Moines Area	9,170	8,466	5,890	
Western Iowa Tech	2,511	2,174	1,713	
Iowa Western	1,466	3,436	1,721	
Southwestern	605	688	307	
Indian Hills	1,467	1,811	1,134	
Southeastern	959	1,224	804	

^a Students participating in joint enrollment programs.

Enrollment Projections

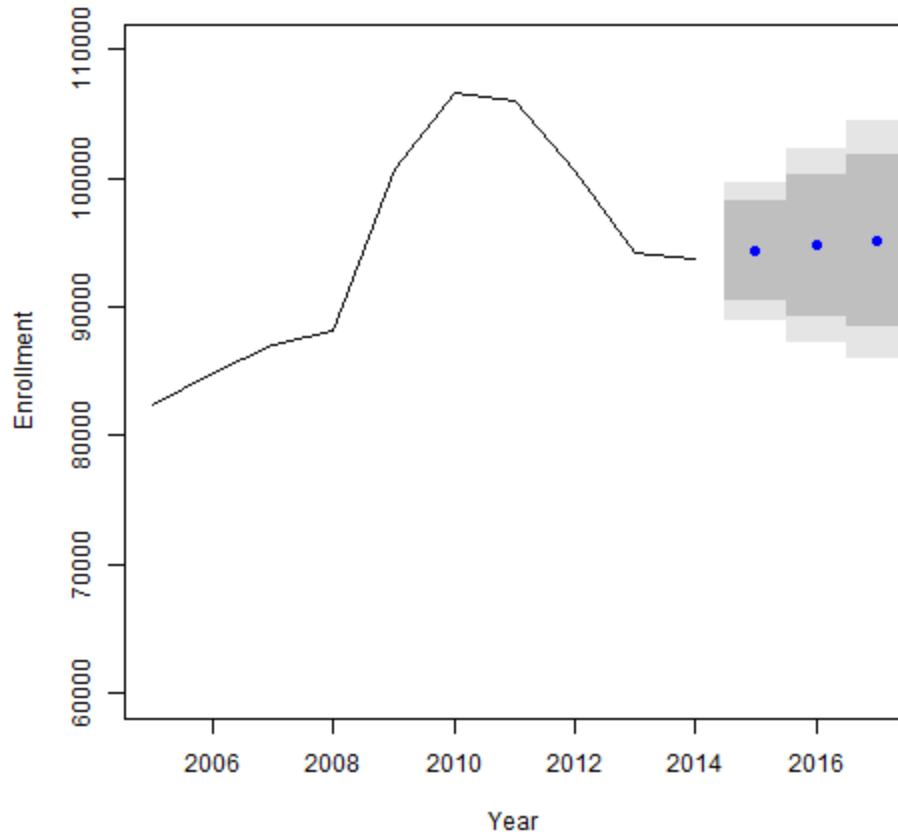
Enrollment for last fall was predicted to vary between 89,804 and 98,120 students. The actual fall enrollment for 2014 was 93,772 students.

Estimated enrollment for next fall will vary between 90,427 and 98,195 students. Based on a model using ten years of prior data, enrollment is projected to increase to about 95,200 students by fall 2017 (figure 6).

Factors affecting enrollment include a paradigm shift toward non-linear education among postsecondary students, declining populations in rural communities, economic conditions, and costs associated with postsecondary education.

Additionally, the adoptions of a funding model by Iowa's public universities which incents resident enrollment appears to impact community college enrollment. Despite having different educational missions, public universities and community colleges must attract new students from overlapping pools of candidates.

Figure 6. Projected enrollment through fall 2017.



This page intentionally left blank.



Community Colleges

www.educateiowa.gov/ccpublications/