



Iowa Community Colleges Tuition and Fees Report

Fiscal Year 2009

August 2008

About this Report:

The community college tuition and fees report is prepared each fiscal year. The report includes trends among the fifteen community colleges as well as comparisons to the Iowa Regent institutions and national comparisons.

Table of Contents

Resident Tuition	2
Fee Comparison	4
Tuition and Fees	5
Tuition as a Revenue Source	6
National Comparisons	8
Comparison with Regent Institutions	10
Appendix	13
State Board of Education	20

The average tuition for a full-time student enrolled in Iowa's community colleges will rise \$169 to \$3,368 in fiscal year 2009 (Table 1). The tuition increase this year will be 5.28%, in line with inflation (Consumer Price Index for All Urban Consumers, July 2008). Since fiscal year 2000, tuition has grown an average of 6.21% and has nearly doubled (Figure 1).

While tuition has grown briskly, community colleges have limited mandatory fees. Average fees will dip \$11.64 this year to \$280.73 (Table 3). Three community colleges do not charge general fees to their students and one college has reduced fees by 45 percent (Table A). Subsequently, the average tuition and fees per credit hour will rise 5.15% to \$122.36, where a course is normally between three and five credit hours (Figure 5).

Tuition growth has outpaced growth in Wisconsin to where Iowa now has the third highest tuition of surrounding states (Figure 7). In fiscal year 2000, Iowa ranked fourth in the region, but recent tuition growth has outpaced Wisconsin. Now Iowa places third behind Minnesota and South Dakota.

Forty-seven percent of the general operating fund revenues are collected from tuition and fees (Table 5), which is near the 25-year high (see Figure 5). Nevertheless, community colleges remain one of the most economical vehicles for postsecondary instruction. By law, community college tuition is not allowed to exceed the lowest resident tuition charged by Iowa Regent institutions. In fiscal year 2009, the average community college tuition will be 39.1% lower than the average Regent tuition (Table 8).

Iowa Community College Resident Tuition

Table 1 lists the average tuition, lowest tuition, and higher tuition charged at Iowa's community colleges for a full-time resident student. Iowa Code limits the total tuition for Iowa residents attending community colleges so as not to exceed the lowest tuition rate per semester charged by a Regent institution for a full-time resident student. A full-time student in this report is a student who enrolls in 15 credit hours.

Average tuition increased \$1,534 from fiscal year 2000 to fiscal year 2009, an increase of 82.65%. Tuition gains averaged 6.92% each year, higher than the national rate of inflation over

the same period and higher than the national average community college.

The spread between tuition amounts has increased dramatically since 2000. The difference from the highest annual tuition to lowest annual tuition has increased from \$330 in fiscal year 2000 to \$554 in fiscal year 2009. Typically, tuition will vary \$175 between colleges.

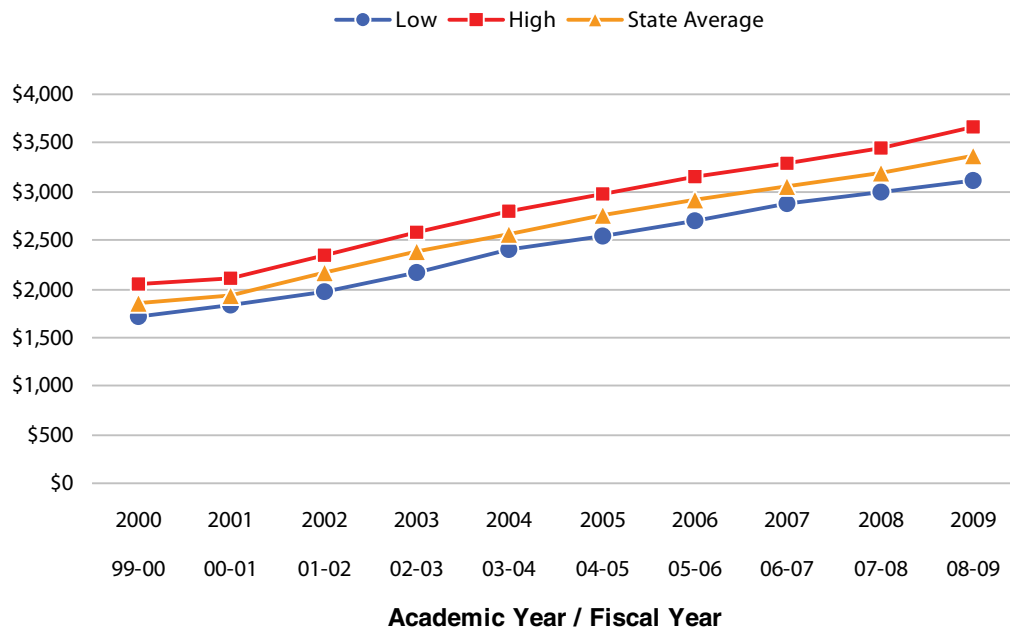
Table A in the appendix lists the full-time resident tuition by college for Arts & Sciences and Career and Technical Education (CTE) programs.

Table 1 — Annual* Iowa Community College Full-Time Resident Tuition**

Fiscal Year	2000	2001	2002	2003	2004	2005	2006	2007	2008	2009
Academic Year	99-00	00-01	01-02	02-03	03-04	04-05	05-06	06-07	07-08	08-09
Low	\$ 1,710	\$ 1,830	\$ 1,980	\$ 2,160	\$ 2,400	\$ 2,550	\$ 2,700	\$ 2,880	\$ 2,996	\$ 3,106
High	2,040	2,100	2,340	2,580	2,790	2,970	3,150	3,300	3,450	3,660
State Average	1,856	1,937	2,162	2,378	2,571	2,754	2,916	3,053	3,199	3,368
Std. Deviation	111.12	94.05	108.17	110.34	107.54	109.67	119.04	127.77	140.38	159.98

Source: 2007-2008 Academic Year Iowa Community Colleges Tuition and Fees Report, issued July 2007; Electronic 2008-2009 tuition survey data submitted by Iowa Community Colleges and compiled by the Iowa Department of Education.

Figure 1 — Annual* Iowa Community College Full-Time Resident Tuition**



Source: 2007-2008 Academic Year, Iowa Community Colleges, Tuition and Fees Report, issued July 2007; Electronic 2008-2009 tuition survey data submitted by Iowa Community Colleges and compiled by the Iowa Department of Education.

* Annual rates are based on a projection of fall tuition rates.

** Based upon 15 credits per term.

Community College Resident Tuition (continued)

The tuition per credit hour is shown in Table 2. Over the past ten years, the average tuition cost per credit hours has increased \$5.38 to \$113 per credit hour. Courses generally range from 3 to 5 credits in a community college.

Similar to average tuition, the variance between the com-

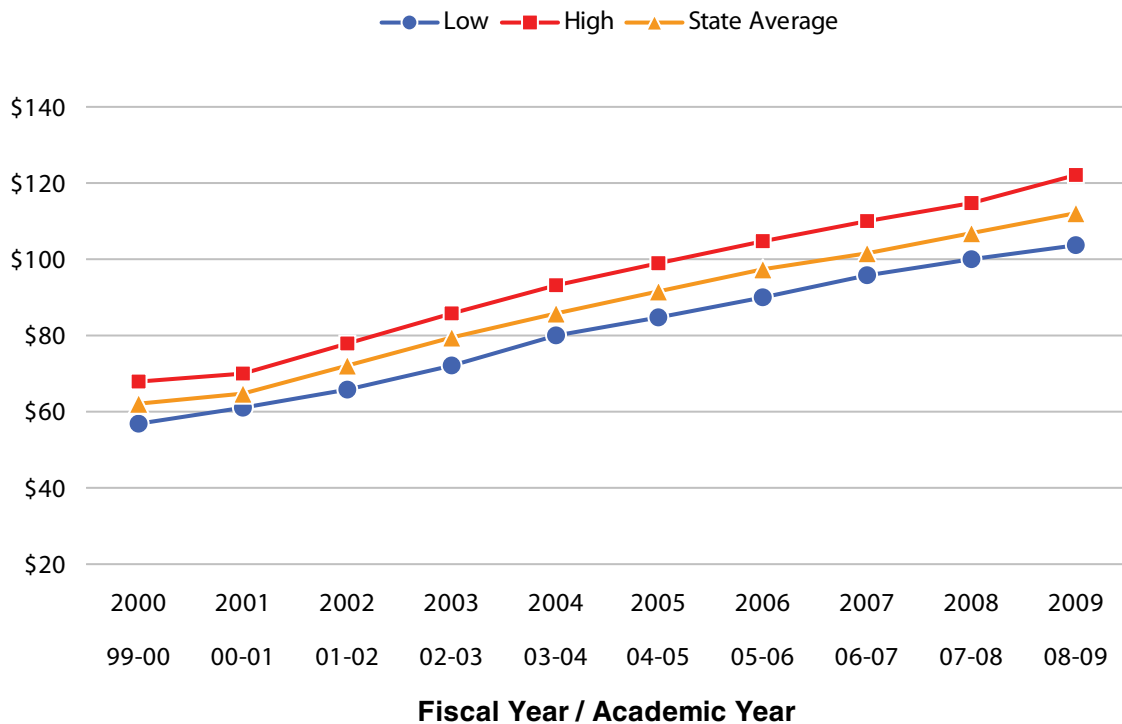
munity colleges has increased. The difference between the highest per credit hour rate and lowest per credit hour rate increased from \$11 in fiscal year 2000 to \$18.45 in fiscal year 2009. Table B in the appendix lists tuition per credit hour by college.

Table 2 — Fall Resident Tuition Per Credit Hour

Fiscal Year	2000	2001	2002	2003	2004	2005	2006	2007	2008	2009
Academic Year	99-00	00-01	01-02	02-03	03-04	04-05	05-06	06-07	07-08	08-09
Low	\$ 57.00	\$ 61.00	\$ 66.00	\$ 72.00	\$ 80.00	\$ 85.00	\$ 90.00	\$ 96.00	\$ 99.85	\$ 103.55
High	68.00	70.00	78.00	86.00	93.00	99.00	105.00	110.00	115.00	111.00
State Average	61.88	64.58	72.05	79.27	85.69	91.79	97.20	101.77	106.62	112.27
Std. Deviation	N/A	N/A	N/A	N/A	3.58	3.66	3.97	4.26	4.68	5.33

Source: 2007-2008 Academic Year, Iowa Community Colleges, Tuition and Fees Report, issued July 2007; Electronic 2008-2009 tuition survey data submitted by Iowa Community Colleges and compiled by the Iowa Department of Education.

Figure 2 — Fall Resident Tuition Per Credit Hour



Source: 2007-2008 Academic Year, Iowa Community Colleges, Tuition and Fees Report, issued July 2007; Electronic 2008-2009 tuition survey data submitted by Iowa Community Colleges and compiled by the Iowa Department of Education.

Iowa Community College Fees

Table 3 reflects the basic fees charged at each community college. Some colleges do not charge a separate fee in addition to their tuition charge. The low fee listed in Table 3 does not consider those colleges who do not charge separate fees. Moreover, these fees do not include any program specific fees.

In fiscal year 2009, average fees will drop 4% to \$280.73. Unlike tuition, fees have remained relatively flat, growing only 1.2% per year since fiscal year 2000.

Table E in the appendix of this report lists regular, recurring fees charged by each college.

Table 3 — Annual* Iowa Community College Full-Time Fees**

Fiscal Year	2001 ¹	2002 ¹	2003 ¹	2004 ²	2005 ²	2006 ³	2007 ³	2008 ³	2009 ³
Academic Year	00-01	01-02	02-03	03-04	04-05	05-06	06-07	07-08	08-09
Low	\$ 60	\$ 60	\$ 60	\$ 60	\$ 60	\$ 300	\$ 300	\$ 300	\$ 330
High	600	660	660	660	675	675	675	705	750
State Average	249.50	260.52	264.53	254.97	274.57	274.77	275.93	292.37	280.73
Std. Deviation	164.22	166.64	174.47	190.69	207.14	215.99	216.67	231.30	224.57

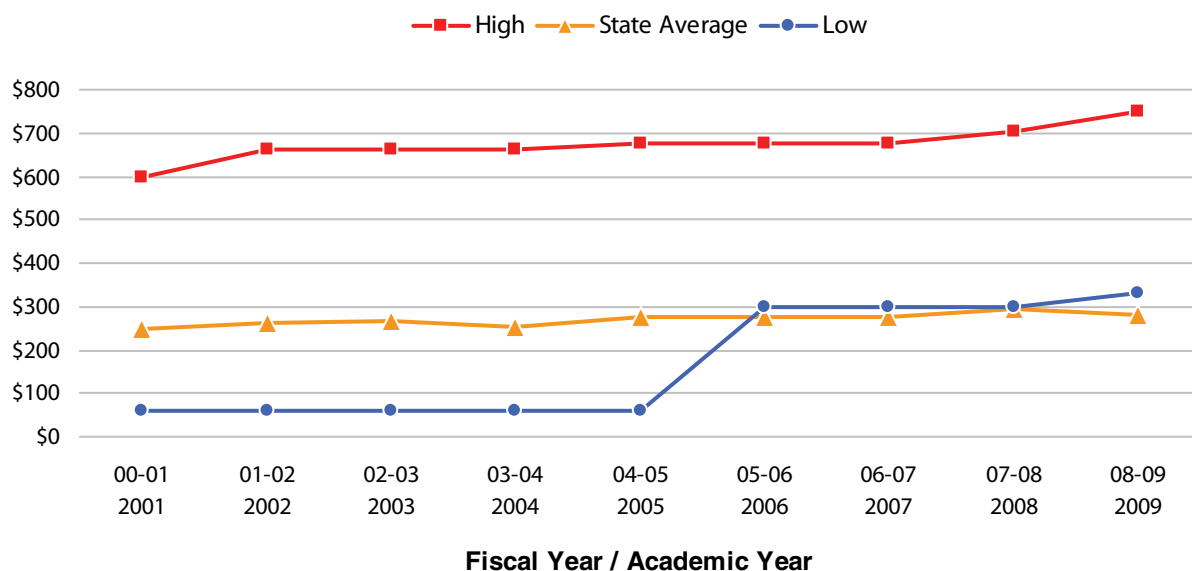
Source: 2007-2008 Academic Year, Iowa Community Colleges, Tuition and Fees Report, Issued July 2007; Electronic 2008-2009 tuition survey data submitted by Iowa Community Colleges and compiled by the Iowa Department of Education.

1 Eastern Iowa, Kirkwood, and Southeastern did not charge separate fees. Indian Hills only charges a \$20 per term (3 terms) Health fee for full-time Ottumwa campus day only.

2 Eastern Iowa, Kirkwood, Southeastern and Des Moines Area did not charge separate fees. Indian Hills only charges a 20 per term (3 terms) Health fee for full-time Ottumwa campus day only.

3 Eastern Iowa, Kirkwood, Des Moines Area, Indian Hills, and Southeastern did not charge separate fees.

Figure 3 — Annual* Iowa Community College Full-Time Fees**



Minimum fees do not include colleges that do not charge fees, but the state average calculation does include no-fee colleges. Thus, the lowest fee can exceed the state average. Source: 2007-2008 Academic Year, Iowa Community Colleges, Tuition and Fees Report, Issued July 2007; Electronic 2008-2009 tuition survey data submitted by Iowa Community Colleges and compiled by the Iowa Department of Education.

* Annual rates are based on a projection of fall tuition rates.

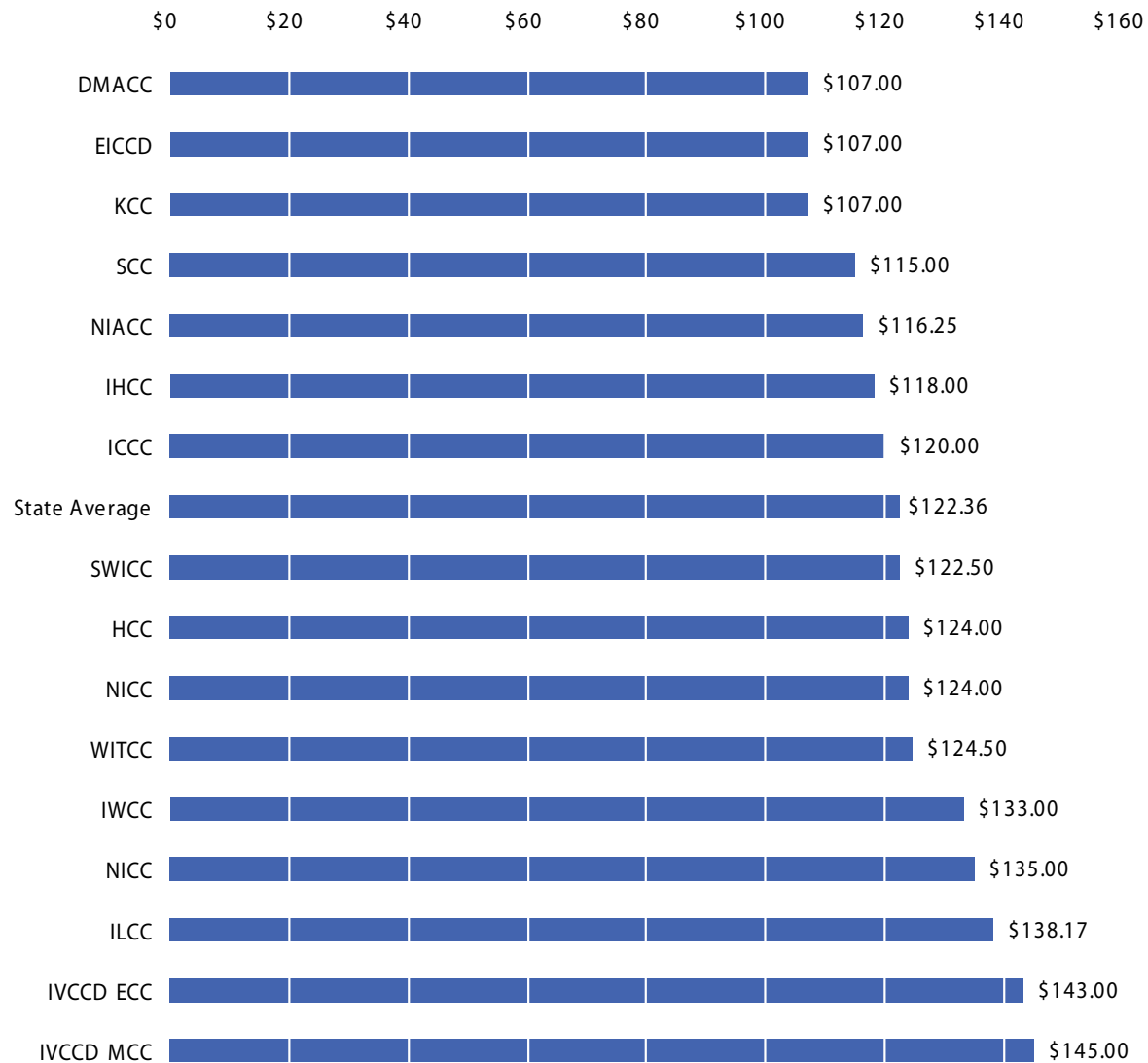
** Based upon 15 credits per term.

Tuition and Fees per Credit Hour

Figure 4 shows the per credit hour tuition and fees. Notwithstanding additional fees, this represents the cost of enrolling in a community college. The average tuition and fees charged per

credit hour will increase \$5.99 per hour in fiscal 2009 to \$122.36. See Table C for a listing of individual tuition and fees charged by college.

Figure 4 — Resident Tuition and Fees per Credit Hour, Fiscal Year 2009



Source: Appendix Table A Charts for Tuition and Fees amounts.

Revenue Sources for Iowa Community Colleges

Tables 4 and 5 reflect the major sources of revenue for the system of Iowa Community Colleges. Tuition and fees is the largest share of general operating fund revenues (Table 4). The revenues comprise 47.51% of revenues, down only slightly from the high in 2005. State, local, and federal funding

shares remain near 25-year lows as tuition and fees is near 25-year highs (see Figure 5).

Nevertheless, total revenue at Iowa's community colleges has increased 512% since 1980 to \$436 million (see Table F in the appendix).

Table 4 — General Operating Fund Revenues* by Source by Iowa Community College

Fiscal Year	Revenue Source				
	Tuition & Fees	Local	State	Federal	Other
1980	\$ 20,770,856	\$ 10,292,235	\$ 42,168,500	\$ 9,499,673	\$ 2,442,607
1985	39,081,844	13,509,424	57,304,653	7,763,792	5,606,917
1990	59,083,307	14,795,294	87,986,508	9,647,666	8,630,027
1995	88,787,614	15,411,635	115,470,717	9,724,727	11,074,989
2000	120,842,833	18,185,022	141,577,403	10,599,091	20,713,200
2001	126,492,784	18,974,313	147,577,403	11,019,583	20,255,115
2002	143,925,326	19,633,548	137,585,680	11,533,176	18,811,715
2003	157,901,666	20,212,798	138,585,680	12,217,820	20,250,870
2004	173,303,945	20,572,952	136,890,098	12,849,913	30,614,196
2005	192,008,125	19,973,009	139,779,246	12,396,138	25,574,079
2006	197,923,928	20,386,296	149,580,895	12,310,925	30,484,574
2007	207,459,968	21,433,089	159,579,244	11,948,729	36,272,537

* Unrestricted portion

Source: 1980 through 2006 data taken from the 2007-2008 Academic Year, Iowa Community Colleges, Tuition and Fees Report, issued July 2007 (source: AS-15E's, Fund 1); Annual Report Fiscal Year 2007 (AS-15E), Unrestricted General Fund, Fund 1.

Table 5 — General Operating Fund Revenues* by Source as a Percentage of Total Revenues

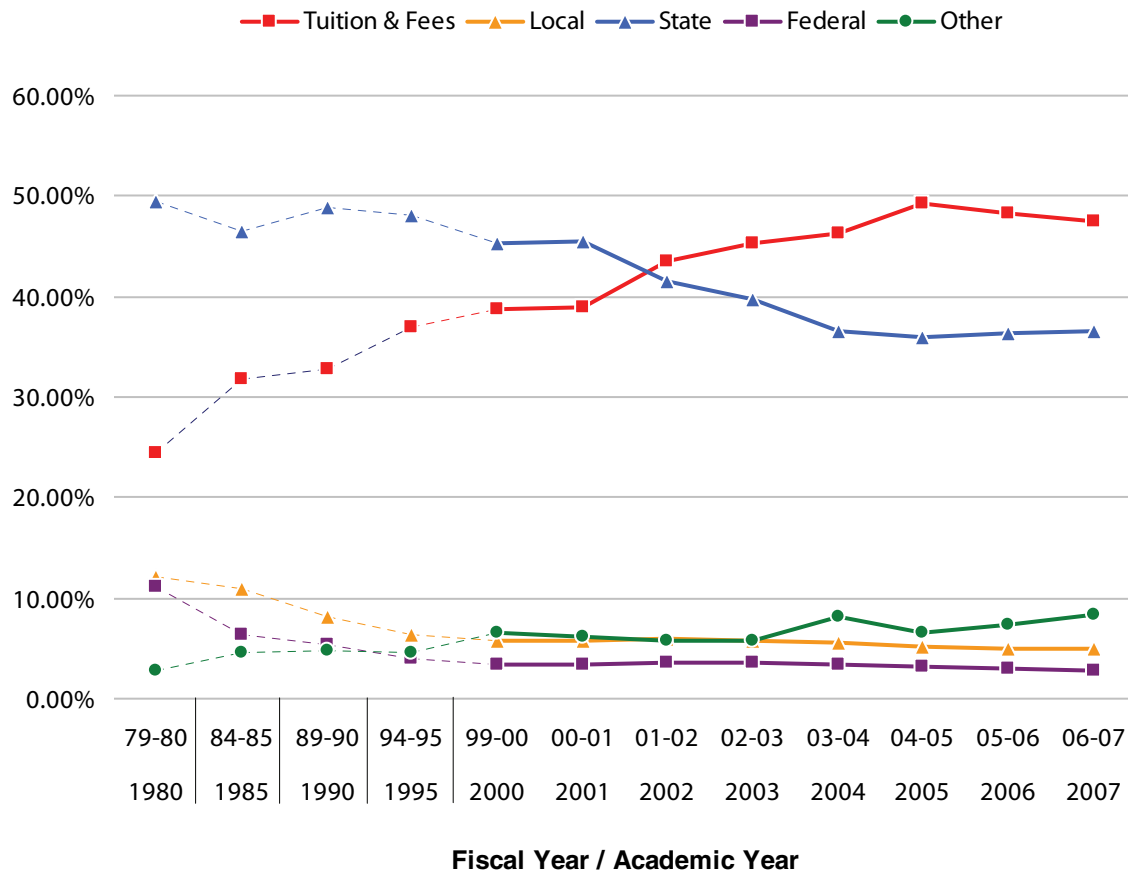
Fiscal Year	Revenue Source				
	Tuition & Fees	Local	State	Federal	Other
1980	24.39%	12.08%	49.51%	11.15%	2.87%
1985	31.71%	10.96%	46.49%	6.30%	4.55%
1990	32.80%	8.21%	48.84%	5.36%	4.79%
1995	36.92%	6.41%	48.02%	4.04%	4.61%
2000	38.74%	5.83%	45.39%	3.40%	6.64%
2001	39.00%	5.85%	45.50%	3.40%	6.25%
2002	43.42%	5.92%	41.51%	3.48%	5.67%
2003	45.22%	5.79%	39.69%	3.50%	5.80%
2004	46.31%	5.50%	36.58%	3.43%	8.18%
2005	49.27%	5.12%	35.87%	3.18%	6.56%
2006	48.19%	4.96%	36.42%	3.00%	7.42%
2007	47.51%	4.91%	36.54%	2.74%	8.31%

* Unrestricted portion

Source: 1980 through 2006 data taken from the 2007-2008 Academic Year, Iowa Community Colleges, Tuition and Fees Report, issued July 2007 (source: AS-15E's, Fund 1); Annual report Fiscal Year 2007 (AS-15E), Unrestricted General Fund, Fund 1.

Tuition as a Revenue Source

Figure 5 — General Operating Fund Revenues by Source as a Percentage of Total Revenues



The first four date bins are not on the same continuous time scale. Source: 1980 through 2006 data taken from the 2007-2008 Academic Year, Iowa Community Colleges, Tuition and Fees Report, issued July 2007 (source: AS-15E's, Fund 1); Annual Report Fiscal Year 2007 (AS-15E), Unrestricted General Fund, Fund 1.

National Comparison of Tuition and Fees

The following information uses data from *The Chronicle of Higher Education, Almanac Issue 2007-2008*. This report provides data through 2006, which is the most recent national higher education tuition data available. The information will differ from the previous section as the *Chronicle* data is based on information supplied to the U.S. Department of Education and includes student fees. Iowa Department of Education tables are based on information provided and verified by Iowa Community Colleges to the Division of Community Colleges and Workforce Preparation.

From fiscal year 2000 to fiscal year 2006, average tuition at Iowa Community Colleges increased 47% while the national average increased 63% (see Table 6). Despite the slower growth, tuition and fees are still 39% above the national average (see Figure 6).

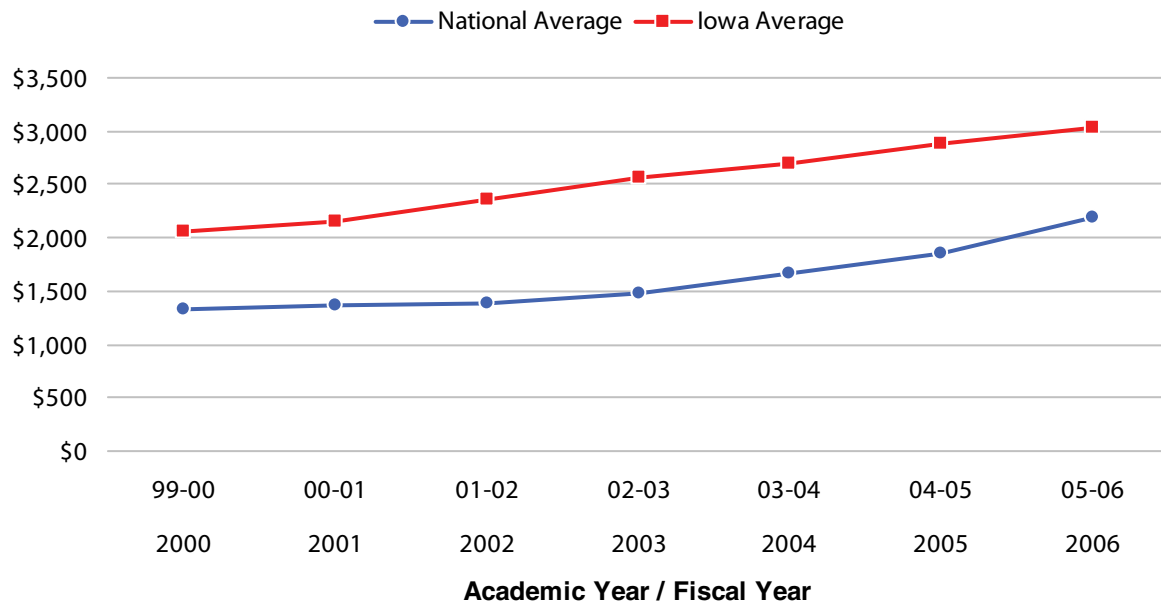
Iowa has the third highest tuition and fees level of its contiguous states (see Table 7). In 2000, Iowa had the fourth highest tuition, slightly behind Wisconsin. However, Iowa's tuition growth has outpaced Wisconsin's and now Iowa ranks third behind South Dakota.

Table 6 — National and State Average Community College Tuition and Fees

Location	Fiscal Year							Change 00-06	Change 00-06
	2000	2001	2002	2003	2004	2005	2006		
National	\$ 1,336	\$ 1,359	\$ 1,379	\$ 1,479	\$ 1,670	\$ 1,847	\$ 2,182	\$ 846	63%
Iowa	2,060	2,149	2,362	2,559	2,686	2,876	3,032	\$ 972	47%

Source: 2007-2008 Academic Year, Iowa Community Colleges, Tuition and Fees Report, issued July 2007. *The Chronicle of Higher Education Almanac Issue 2007-2008*

Figure 6 — National and State Average Community College Tuition and Fees



Source: 2007-2008 Academic Year, Iowa Community Colleges, Tuition and Fees Report, issued July 2007. *The Chronicle of Higher Education Almanac Issue 2007-2008*

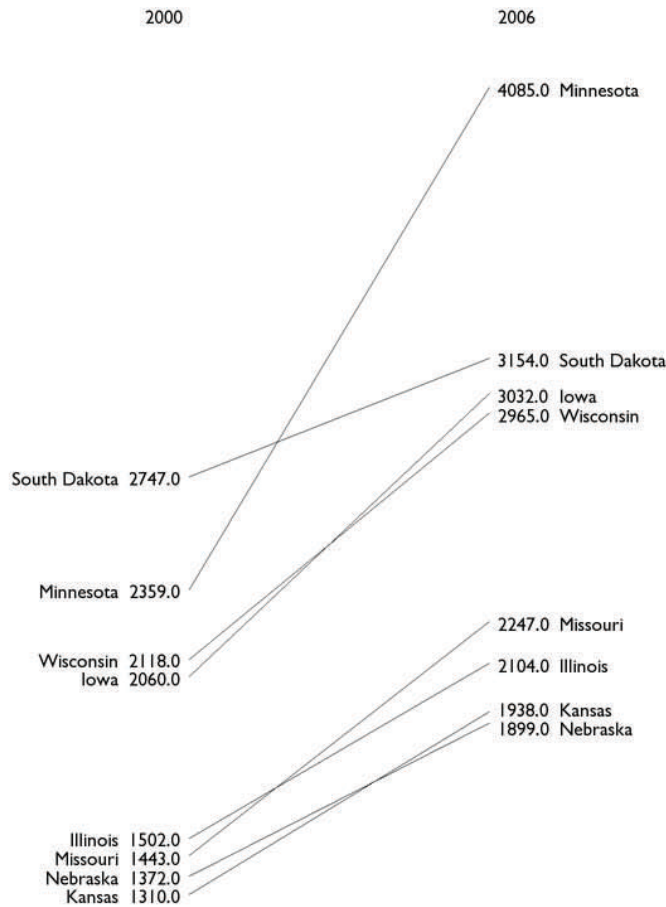
Regional Comparison of Tuition and Fees

Table 7 — Comparison of Average Tuition and Fees with Surrounding States

State	Fiscal Year							Change 00-06	Change 00-06
	2000	2001	2002	2003	2004	2005	2006		
Minnesota	\$ 2,359	\$ 2,512	\$ 2,746	\$ 2,880	\$ 2,812	\$ 3,839	\$ 4,085	\$1,726	73%
South Dakota	2,747	2,861	2,964	3,167	3,414	2,840	3,154	407	15%
Iowa	2,060	2,149	2,362	2,559	2,686	2,876	3,032	972	47%
Wisconsin	2,118	2,262	2,310	2,555	2,583	2,796	2,965	847	40%
Missouri	1,443	1,482	1,498	1,792	1,940	2,128	2,247	804	56%
Illinois	1,502	1,534	1,569	1,662	1,792	1,952	2,104	602	40%
Kansas	1,310	1,379	1,441	1,640	1,783	1,882	1,938	628	48%
Nebraska	1,372	1,425	1,498	1,567	1,678	1,772	1,899	527	38%

Source: 2007-2008 Academic Year, Iowa Community Colleges, Tuition and Fees Report, issued July 2007. *The Chronicle of Higher Education Almanac Issue 2007-2008*

Figure 7 — Comparison of Average Tuition and Fees with Surrounding States (Dollars)



Source: 2007-2008 Academic Year, Iowa Community Colleges, Tuition and Fees Report, issued July 2007. *The Chronicle of Higher Education Almanac Issue 2007-2008*

Tuition Comparison with Iowa Regent Institutions

Tables 8, 9, and 10 provide a comparison of the Iowa Community College average annual full-time resident tuition rate to the average tuition rate of Iowa Regent institutions. By law, community college tuition cannot exceed the minimum tuition at the Regent institutions. In 2009 community college tuition will be 38.7% lower than the Regent average tuition (see Table 8 and Figure 8).

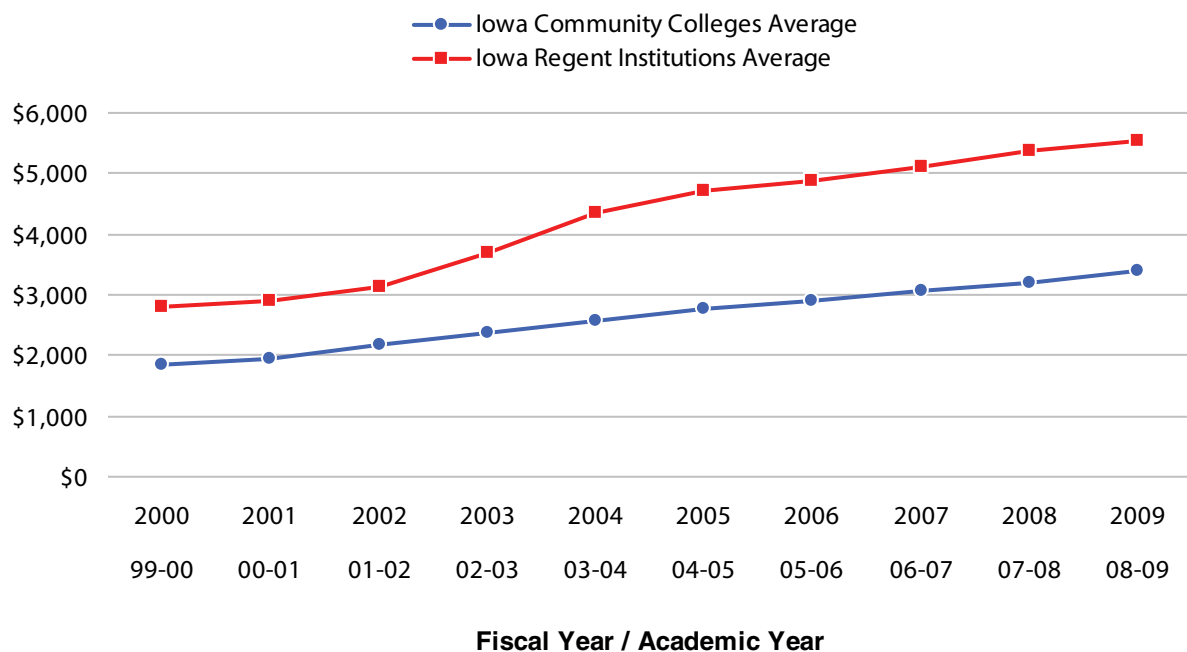
The Iowa Regent institutions increased tuition 3.2% in fiscal year 2009, which is lower than the 4.78% gain for Iowa community colleges. Since fiscal year 2003, nominal tuition gains at Regent institutions typically outpaced community colleges (see Table 9 and Figure 9).

Table 8 — Annual* Full-time Tuition Rates Comparison**

Institution	Fiscal Year									
	2000	2001	2002	2003	2004	2005	2006	2007	2008	2009
Iowa Community Colleges	\$ 1,856	\$ 1,937	\$ 2,162	\$ 2,378	\$ 2,571	\$ 2,754	\$ 2,916	\$ 3,053	\$ 3,199	\$ 3,390
Iowa Regent Institutions	2,786	2,906	3,116	3,692	4,342	4,702	4,890	5,094	5,360	5,532

Source: 2007-2008 Academic Year, Iowa Community Colleges Tuition and Fees Report, issued July 2007; Electronic 2008-2009 tuition survey data submitted by Iowa Community Colleges and compiled by the Iowa Department of Education; Regents information obtained from the Iowa Board of Regents' website.

Figure 8 — Annual* Full-time Tuition Comparison**



Source: 2007-2008 Academic Year, Iowa Community Colleges Tuition and Fees Report, issued July 2007; Electronic 2008-2009 tuition survey data submitted by Iowa Community Colleges and compiled by the Iowa Department of Education; Regents information obtained from the Iowa Board of Regents web site.

* Annual rates are based on a projection of fall tuition rates.

** 15 hours per semester for Iowa Community Colleges; Full-Time for Iowa Regent Institutions

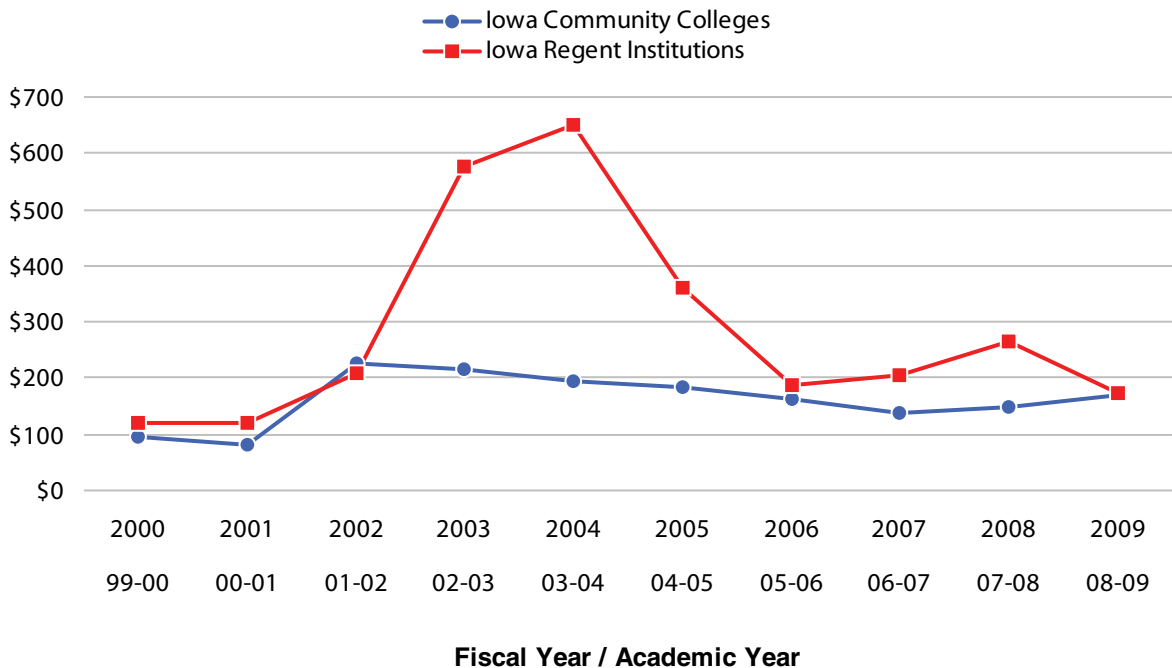
Tuition Comparison with Iowa Regent Institutions

Table 9 — Annual* Full-time Tuition Increase for Regents and Community Colleges**

Institution	Fiscal Year									
	2000	2001	2002	2003	2004	2005	2006	2007	2008	2009
Iowa Community College	\$ 94	\$ 81	\$ 225	\$ 216	\$ 193	\$ 183	\$ 162	\$ 137	\$ 146	\$ 169
Iowa Regent Institutions	120	120	210	576	650	360	188	204	266	172

Source: 2007-2008 Academic Year Iowa Community Colleges Tuition and Fees Report, issued July 2007; Electronic 2008-2009 tuition survey data submitted by Iowa Community Colleges and compiled by the Iowa Department of Education; Regents information obtained from the Iowa Board of Regents' website.

Figure 9 — Annual* Average Full-time Tuition Increase**



Source: 2007-2008 Academic Year Iowa Community Colleges, Tuition and Fees Report, issued July 2007; Electronic 2008-2009 tuition survey data submitted by Iowa Community Colleges and compiled by the Iowa Department of Education; Regents information obtained from the Iowa Board of Regents' website.

* Annual rates are based on a projection of fall tuition rates.

** 15 hours per semester for Iowa Community Colleges; Full-Time for Iowa Regent Institutions

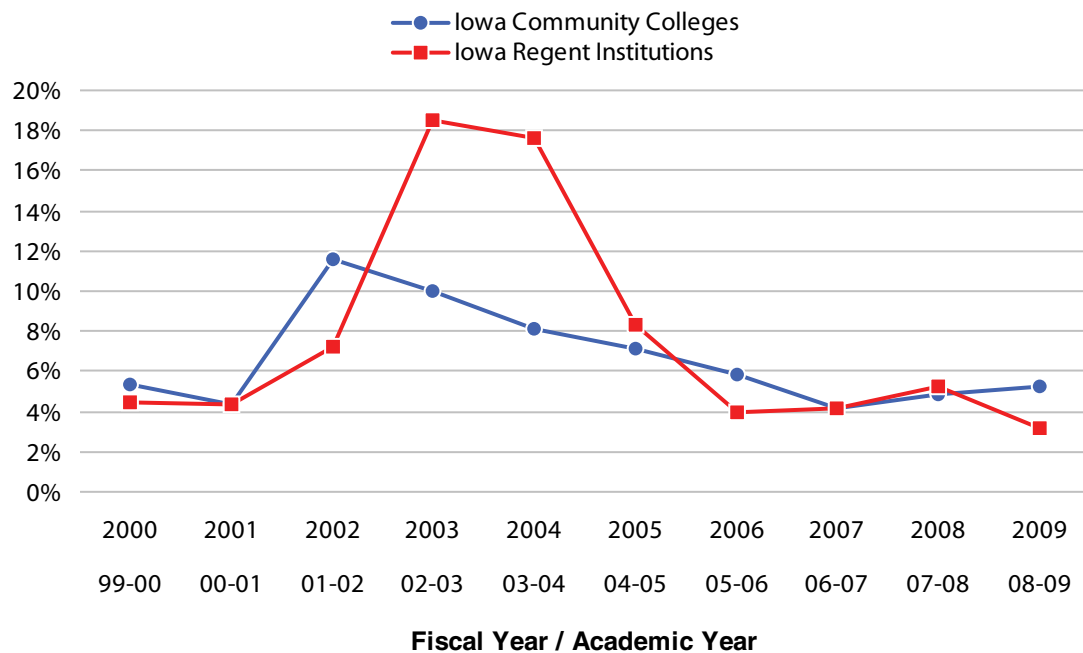
Tuition Comparison with Iowa Regent Institutions

Table 10 — Annual* Average Percentage Increase in Full-time Tuition**

Institution	Fiscal Year									
	2000	2001	2002	2003	2004	2005	2006	2007	2008	2009
Iowa Community Colleges	5.33%	4.36%	11.62%	10.01%	8.11%	7.12%	5.89%	4.17%	4.78%	5.29%
Iowa Regent Institutions	4.50%	4.31%	7.23%	18.49%	17.61%	8.29%	4.00%	4.17%	5.22%	3.21%

Source: 2007-2008 Academic Year, Iowa Community Colleges, Tuition and Fees Report, issued July 2007; Electronic 2008-2009 tuition survey data submitted by Iowa Community Colleges and compiled by the Iowa Department of Education; Regents information obtained from the Iowa Board of Regents' website.

Figure 10 — Annual* Average Percentage Increase in Full-time Tuition**



Source: 2007-2008 Academic Year, Iowa Community Colleges, Tuition and Fees Report, issued July 2007; Electronic 2008-2009 tuition survey data submitted by Iowa Community Colleges and compiled by the Iowa Department of Education; Regents information obtained from the Iowa Board of Regents' website.

* Annual rates are based on a projection of fall tuition rates.

** 15 hours per semester for Iowa Community Colleges; Full-Time for Iowa Regent Institutions

Appendix

**Table A, Part I: Resident Tuition and Fees
Based on 12 Credit Hours per Term
(Arts & Sciences, Career and Technical Education)
2008-2009 Academic Year**

Community College	2007-2008			2008-2009			Increase FY2008-FY2009			Total % Increase
	Tuition	Fees	Total	Tuition	Fees	Total	Tuition	Fees	Total	
Northeast Iowa	\$ 2,760.00	\$ 312.00	\$ 3,072.00	\$ 2,928.00	\$ 312.00	\$ 3,240.00	\$ 168.00	\$ 0.00	\$ 168.00	5.47%
North Iowa Area	2,396.40	294.48	2,690.88	2,485.00	304.80	2,789.80	88.60	10.32	98.92	3.68%
Iowa Lakes	2,712.00	440.00	3,152.00	2,880.00	440.00	3,320.00	168.00	0.00	168.00	5.33%
Northwest Iowa	2,568.00	480.00	3,048.00	2,712.00	264.00	2,976.00	144.00	(216.00)	(72.00)	-2.36%
Iowa Central	2,448.00	264.00	2,712.00	2,616.00	264.00	2,880.00	168.00	0.00	168.00	6.19%
Iowa Valley - MCC	2,688.00	552.00	3,240.00	2,856.00	624.00	3,480.00	168.00	72.00	240.00	7.41%
- ECC	2,688.00	564.00	3,252.00	2,856.00	576.00	3,432.00	168.00	12.00	180.00	5.54%
Hawkeye	2,592.00	264.00	2,856.00	2,712.00	264.00	2,976.00	120.00	0.00	120.00	4.20%
Eastern Iowa	2,448.00	0.00	2,448.00	2,568.00	0.00	2,568.00	120.00	0.00	120.00	4.90%
Kirkwood	2,472.00	0.00	2,472.00	2,568.00	0.00	2,568.00	96.00	0.00	96.00	3.88%
Des Moines Area	2,448.00	0.00	2,448.00	2,568.00	0.00	2,568.00	120.00	0.00	120.00	4.90%
Western Iowa Tech	2,448.00	372.00	2,820.00	2,616.00	372.00	2,988.00	168.00	0.00	168.00	5.96%
Iowa Western	2,520.00	240.00	2,760.00	2,664.00	264.00	2,928.00	144.00	24.00	166.00	6.01%
Southwestern	2,652.00	288.00	2,940.00	2,652.00	288.00	2,940.00	0.00	0.00	0.00	0.00%
Indian Hills ¹	2,664.00	0.00	2,664.00	2,832.00	0.00	2,832.00	168.00	0.00	168.00	6.31%
Southeastern	2,568.00	0.00	2,568.00	2,760.00	0.00	2,760.00	192.00	0.00	192.00	7.48%
State Average²	\$2,558.96	\$234.17	\$2,910.21	\$2,694.47	\$224.85	\$2,919.19	\$135.51	(\$9.31)	\$126.06	4.56%
Std. Dev. (C.C.)	111.41	185.34	248.96	128.01	179.92	256.21	46.56	56.45	72.41	2.50
Iowa Regents⁴	\$5,360.00	\$848.11	\$6,208.11	\$5,532.00	\$888.00	\$6,420.00	\$172.00	\$39.89	\$211.89	3.40%
Std. Dev. (Regents)	11.31	36.50	47.36	11.31	62.57	73.83	0.00	28.13	28.13	0.43

Source: 2007-2008 Academic Year, Iowa Community Colleges, Tuition and Fees Report, issued July 27; Electronic 2008-2009 tuition survey data submitted by Iowa Community Colleges and compiled by the Iowa Department of Education.

¹⁻⁴ See footnotes on next page (Page 14)

Appendix

**Table A, Part II: Resident Tuition and Fees
Based on 15 Credit Hours per Term
(Arts & Sciences, Career and Technical Education)
2008-2009 Academic Year**

Community College	2007-2008			2008-2009			Increases			Total % Increase
	Tuition	Fees	Total	Tuition	Fees	Total	Tuition	Fees	Total	
Northeast Iowa	\$ 3,450.00	\$ 390.00	\$ 3,840.00	\$ 3,660.00	\$ 390.00	\$ 4,050.00	\$ 210.00	\$ 0.00	\$ 210.00	5.47%
North Iowa Area	2,995.50	368.10	3,363.60	3,106.50	381.00	3,487.50	111.00	\$12.90	\$123.90	3.68%
Iowa Lakes	3,390.00	545.00	3,935.00	3,600.00	545.00	4,145.00	210.00	\$ 0.00	\$ 210.00	5.34%
Northwest Iowa	3,210.00	600.00	3,810.00	3,390.00	330.00	3,720.00	180.00	(\$270.00)	(\$90.00)	-2.36%
Iowa Central	3,060.00	330.00	3,390.00	3,270.00	330.00	3,600.00	210.00	\$ 0.00	\$ 210.00	6.19%
Iowa Valley - MCC	3,360.00	690.00	4,050.00	3,570.00	780.00	4,350.00	210.00	\$90.00	\$300.00	7.41%
- ECC	3,360.00	705.00	4,065.00	3,570.00	720.00	4,290.00	210.00	\$15.00	\$225.00	5.54%
Hawkeye	3,240.00	330.00	3,570.00	3,390.00	330.00	3,720.00	150.00	\$ 0.00	\$ 150.00	4.20%
Eastern Iowa	3,060.00	0.00	3,060.00	3,210.00	0.00	3,210.00	150.00	\$ 0.00	\$ 150.00	4.90%
Kirkwood	3,090.00	0.00	3,090.00	3,210.00	0.00	3,210.00	120.00	\$ 0.00	\$ 120.00	3.88%
Des Moines Area	3,060.00	0.00	3,060.00	3,210.00	0.00	3,210.00	150.00	\$ 0.00	\$ 150.00	4.90%
Western Iowa Tech	3,060.00	465.00	3,525.00	3,270.00	465.00	3,735.00	210.00	\$ 0.00	\$ 210.00	5.96%
Iowa Western	3,150.00	300.00	3,450.00	3,330.00	330.00	3,660.00	510.00	\$30.00	\$210.00	6.09%
Southwestern	3,315.00	360.00	3,675.00	3,315.00	360.00	3,675.00	0.00	\$ 0.00	\$ 0.00	0.00%
Indian Hills ¹	3,330.00	0.00	3,330.00	3,540.00	0.00	3,540.00	210.00	\$ 0.00	\$ 210.00	6.31%
Southeastern	3,210.00	0.00	3,210.00	3,450.00	0.00	3,450.00	240.00	\$ 0.00	\$ 240.00	7.48%
State Average²	\$3,198.70	\$234.17	\$3,637.26	\$3,368.10	\$224.85	\$3,648.83	\$169.40	(\$11.64)	\$173.94	4.57%
Std. Dev. (C.C.)	139.27	231.30	309.81	59.98	224.51	319.74	58.18	70.57	131.47	2.50
Iowa Regents⁴	\$5,360.00	848.11	\$6,208	\$5,532.00	888.00	6,420	\$172.00	39.89	211.89	3.40%³
Std. Dev. (Regents)	11.31	36.5	47.36	11.31	62.57	73.83	0.00	28.13	28.13	0.43

Source: 2007-2008 Academic Year, Iowa Community Colleges, Tuition and Fees Report, issued July 2007; Electronic 2008-2009 tuition survey data submitted by Iowa Community Colleges and compiled by the Iowa Department of Education.

¹ Semester credits for three 12 week terms. Eight credits per term equals 12 per semester. (10/term equals 15/sem.)

² The calculations above were performed as follows:

- a) Iowa Valley MCC & ECC were combined and an average was calculated for the college.
- b) All college's that charged fees were combined for a grand total of fees charged.
- c) The total of fees charged was divided by the number of college's charging fees to arrive at a state average fee.

³ Tuition Increases only.

⁴ Average Regents' Tuition.

Note: Not all fees charged by a college are included in the above calculations. The above calculations only include the fees charged per semester hour that apply to all students. Other fees may be charged including fees for labs and fees for special classes (correspondence, internet, etc).

Appendix

Table B
Iowa Community Colleges
Resident per Credit Hour Tuition
(Arts & Sciences, Career and Technical Education)
2008-2009 Academic Year

Community College	2007-2008 Tuition Per Semester Hour	2008-2009 Tuition Per Semester Hour	Increase Per Hour FY2007-FY2008	Year - 12 Hours / Semester	Year - 15 Hours / Semester	Tuition Percent Increase
Northeast Iowa	\$ 115.00	\$ 122.00	\$ 7.00	\$ 2,928.00	\$ 3,660.00	6.09%
North Iowa Area	99.85	103.55	3.70	2,485.20	3,106.50	3.71%
Iowa Lakes	113.00	120.00	7.00	2,880.00	3,600.00	6.19%
Northwest Iowa	107.00	113.00	6.00	2,712.00	3,390.00	5.61%
Iowa Central	102.00	109.00	7.00	2,616.00	3,270.00	6.86%
Iowa Valley - MCC	112.00	119.00	7.00	2,856.00	3,570.00	6.25%
- ECC	112.00	119.00	7.00	2,856.00	3,570.00	6.25%
Hawkeye	108.00	113.00	5.00	2,712.00	3,390.00	4.63%
Eastern Iowa	102.00	107.00	5.00	2,568.00	3,210.00	4.90%
Kirkwood	103.00	107.00	4.00	2,568.00	3,210.00	3.88%
Des Moines Area	102.00	107.00	5.00	2,568.00	3,210.00	4.90%
Western Iowa Tech	102.00	109.00	7.00	2,616.00	3,270.00	6.86%
Iowa Western	105.00	111.00	6.00	2,928.00	3,660.00	5.71%
Southwestern	110.50	110.50	0.00	2,652.00	3,315.00	0.00%
Indian Hills ²	111.00	118.00	7.00	2,832.00	3,540.00	6.31%
Southeastern	107.00	115.00	8.00	2,760.00	3,450.00	7.48%
State Average	\$106.62	\$112.27	\$5.65	\$2,694.48	\$3,360.77	5.29%
Std. Dev. (C.C.)	4.64	5.33	1.94	127.98	164.20	1.76
Iowa Regents³	\$5,360.00	\$5,532.00	\$172.00	\$5,532.00	\$5,532.00	3.21%
Std. Dev. (Regents)	11.31	36.5	47.36	11.31	62.57	73.83

Source: 2007-2008 Academic Year, Iowa Community Colleges, Tuition and Fees Report, issued July 2007; Electronic 2008-2009 tuition survey data submitted by Iowa Community Colleges and compiled by the Iowa Department of Education.

¹ Where there is no tuition cap, the maximum number of hours for which tuition may be charged without exceeding Regents' tuition.

² Semester credits for three 12 week terms. Eight credits per term equals 12 per semester. (10/term equals 15/sem)

³ Average total base tuition for the Regents.

Appendix

Table C
Iowa Community Colleges
Resident Tuition and Fees per Credit Hour
as Calculated by the Iowa Department of Education
(Arts & Sciences, Career and Technical Education)
2008-2009 Academic Year

Community College	2008-2009 Tuition for 15 Credits Per Term	2008-2009 Fees for 15 Credits Per Term	2008-2009 Total Tuition and Fees for 15 Credits Per Term	2008-2009 Tuition and Fees Per Credit Hour
Northeast Iowa	\$ 3,660.00	\$ 390.00	\$ 4,050.00	\$ 135.00
North Iowa Area	3,106.50	381.00	3,487.50	116.25
Iowa Lakes	3,600.00	545.00	4,145.00	138.17
Northwest Iowa	3,390.00	330.00	3,720.00	124.00
Iowa Central	3,270.00	330.00	3,600.00	120.00
Iowa Valley - MCC	3,570.00	780.00	4,350.00	145.00
- ECC	3,570.00	720.00	4,290.00	143.00
Hawkeye	3,390.00	330.00	3,720.00	124.00
Eastern Iowa	3,210.00	0.00	3,210.00	107.00
Kirkwood	3,210.00	0.00	3,210.00	107.00
Des Moines Area	3,210.00	0.00	3,210.00	107.00
Western Iowa Tech	3,270.00	465.00	3,735.00	124.50
Iowa Western	3,330.00	330.00	3,660.00	122.00
Southwestern	3,315.00	360.00	3,675.00	122.50
Indian Hills	3,540.00	0.00	3,540.00	118.00
Southeastern	3,450.00	0.00	3,450.00	115.00
State Average¹	\$3,368.10	\$421.10	\$3,648.83	\$121.36
Standard Deviation	159.98	224.51	319.74	10.66

(1) All State Averages are calculated based on 15 community colleges except the State Average Fees for 15 Credits per Term, which is calculated using only those community colleges charging fees.

Source: Electronic 2008-2009 tuition survey data submitted by Iowa Community Colleges and compiled by the Iowa Department of Education.

Appendix

Table D
Iowa Community Colleges
Non-Resident per Credit Hour Tuition
(Arts & Sciences, Career and Technical Education)
2008-2009 Academic Year

Community College	2007-2008 Tuition Per Semester Hour	2008-2009 Tuition Per Semester Hour	Increase Per Hour 2008-2009	Year - 12 Hours / Semester	Year - 15 Hours / Semester	Tuition Percent Increase
Northeast Iowa	\$ 115.00	\$ 122.00	\$ 7.00	\$ 2,928.00	\$ 3,660.00	6.09%
North Iowa Area	149.78	155.33	5.55	3,727.92	4,659.90	3.71%
Iowa Lakes	115.00	122.00	7.00	2,928.00	3,660.00	6.09%
Northwest Iowa	148.00	148.00	0.00	3,552.00	4,440.00	0.00%
Iowa Central	153.00	163.50	10.50	3,924.00	4,905.00	6.86%
Iowa Valley - MCC	140.00	149.00	9.00	3,576.00	4,470.00	6.43%
- ECC	140.00	149.00	9.00	3,576.00	4,470.00	6.43%
Hawkeye	162.00	169.50	7.50	4,068.00	5,085.00	4.63%
Eastern Iowa	153.00	160.50	7.50	3,852.00	4,815.00	4.90%
Kirkwood	206.00	132.00	(74.00)	3,168.00	3,960.00	-35.92%
Des Moines Area	204.00	214.00	10.00	5,136.00	6,420.00	4.90%
Western Iowa Tech	133.00	133.00	0.00	3,192.00	3,990.00	0.00%
Iowa Western	157.50	166.50	9.00	3,996.00	4,995.00	5.71%
Southwestern	142.50	142.50	0.00	3,420.00	4,275.00	0.00%
Indian Hills ¹	167.00	177.00	10.00	4,248.00	5,310.00	5.99%
Southeastern	119.00	120.00	1.00	2,880.00	3,600.00	0.84%
State Average	\$150.99	\$151.66	\$0.67	\$3,639.73	\$4,549.66	0.44%

Source: 2007-2008 Academic Year, Iowa Community Colleges, Tuition and Fees Report, issued July 2007; Electronic 2008-2009 tuition survey data submitted by Iowa Community Colleges and compiled by the Iowa Department of Education.

¹ Semester credits for three 12 week terms. Eight credits per term equals 12 per semester. (10/term equals 15 sem)

Appendix

Table E
Iowa Community Colleges
Recurring Fees for Full-Time Students
2008-2009 Academic Year

Community College	Amount	Per	Purpose	Year, 12 Credits Per Term	Year, 15 Credits Per Term
Northeast Iowa	\$13.00	Sem Hr.	General	\$312.00	\$390.00
North Iowa Area	\$3.00	Sem Hr.	Student Activity	\$72.00	\$90.00
	\$9.70	Sem Hr.	Materials/Lab/Supply	\$232.80	\$291.00
				\$304.80	\$381.00
Iowa Lakes	\$0.75	Sem Hr.	Processing	\$18.00	\$22.50
	\$10.00	Term (F/T)	Base Activity	\$20.00	\$20.00
	\$2.25	Sem Hr.	Activity	\$54.00	\$67.50
	\$6.25	Sem Hr.	General	\$150.00	\$187.50
	\$8.00	Sem Hr.	Technology	\$192.00	\$240.00
	\$0.25	Sem Hr. (F/T)	Noel Levitz/Learning Styles Analysis	\$6.00	\$7.50
			\$440.00	\$545.00	
Northwest Iowa	\$4.00	Sem Hr.	Student Fee	\$96.00	\$120.00
	\$7.00	Sem Hr.	Technology Fee	\$168.00	\$210.00
				\$264.00	\$330.00
Iowa Central	\$11.00	Sem Hr.	Student Fee	\$264.00	\$330.00
Iowa Valley (Marshalltown CC)	\$17.00	Sem Hr.	Materials & Technology Fee	\$408.00	\$510.00
	\$7.00	Sem Hr.	Student/Distance Learning/Facility Fee	\$168.00	\$210.00
				\$576.00	\$720.00
(Ellsworth CC)	\$17.00	Sem Hr.	Materials & Technology Fee	\$408.00	\$510.00
	\$9.00	Sem Hr.	Student/Distance Learning/Facility Fee	\$216.00	\$270.00
				\$624.00	\$780.00
Hawkeye	\$4.00	Sem Hr.	Service	\$96.00	\$120.00
	\$4.50	Sem Hr.	Computer	\$108.00	\$135.00
	\$2.50	Sem Hr.	Activity	\$60.00	\$75.00
				\$264.00	\$330.00
Eastern Iowa	None				
Kirkwood	None				
Des Moines Area	None				
Western Iowa Tech	\$9.00	Credit Hr.	Technology	\$216.00	\$270.00
	\$6.50	Credit Hr.	Matriculation	\$156.00	\$195.00
				\$372.00	\$465.00
Iowa Western	\$11.00	Sem Hr.	Student Activity Fee	\$264.00	\$330.00
Southwestern	\$9.00	Sem Hr.	Service/Technology	\$216.00	\$270.00
	\$3.00	Sem Hr.	Activity	\$72.00	\$90.00
				\$288.00	\$360.00
Indian Hills	None				
Southeastern	None				

Source: 2007-2008 Academic Year, Iowa Community Colleges, Tuition and Fees Report, issued July 2007; Electronic 2008-2009 tuition survey data submitted by Iowa Community Colleges and compiled by the Iowa Department of Education.

Note: This is not an all inclusive listing of fees charged by the individual community colleges. The fees listed above include all fees charged to each student. Other fees such as lab fees or special class fees may be charged by the individual community college.

Appendix

Table F
Iowa Community Colleges
Source of Revenues, Constant 2007 Dollars
1980-2007

Fiscal Year	Tuition and Fees	Local	State	Federal	Other Income	Total Revenue
1980	52,342,557	25,936,432	106,264,620	23,939,176	6,155,370	214,638,155
1981	57,863,928	25,072,075	104,713,539	25,505,735	5,770,431	218,925,709
1982	63,535,618	25,572,177	104,980,927	22,920,677	5,984,415	222,993,814
1983	68,566,123	26,115,078	114,282,199	16,473,739	8,464,504	233,901,643
1984	71,271,822	26,503,208	109,811,028	18,040,630	12,212,816	237,839,504
1985	75,427,959	26,073,188	110,597,980	14,984,119	10,821,350	237,904,596
1986	79,141,885	27,105,605	108,332,326	13,681,504	12,630,619	240,891,938
1987	80,948,985	27,886,016	108,636,136	14,351,711	14,171,145	245,993,993
1988	81,061,556	27,115,589	130,023,070	15,279,325	12,039,869	265,519,408
1989	88,408,795	24,786,168	135,513,080	14,102,090	14,319,482	277,129,615
1990	93,942,458	23,524,517	139,898,548	15,339,789	13,721,743	286,427,055
1991	98,209,650	22,235,662	150,491,820	15,220,981	11,208,866	297,366,978
1992	105,772,895	22,738,335	153,857,371	14,990,787	10,756,636	308,116,023
1993	114,870,238	21,177,441	151,579,600	13,755,914	11,234,656	312,617,848
1994	118,048,844	20,976,645	156,129,009	12,674,175	12,726,599	320,555,273
1995	120,751,155	20,959,824	157,040,175	13,225,629	15,061,985	327,038,768
1996	124,753,741	21,509,540	159,550,076	12,395,482	14,733,024	332,941,864
1997	131,335,955	20,667,721	162,548,090	11,216,562	16,578,476	342,346,804
1998	139,889,760	21,099,355	166,182,105	11,414,797	19,360,505	357,946,521
1999	143,256,933	21,660,676	167,854,033	11,785,623	23,057,397	367,614,663
2000	145,011,400	21,822,026	169,892,884	12,718,909	24,855,840	374,301,059
2001	147,996,557	22,199,946	172,665,562	12,892,912	23,698,485	379,453,462
2002	165,514,125	22,578,580	158,223,532	13,263,152	21,633,472	381,212,862
2003	178,428,883	22,840,462	156,601,818	13,806,137	22,883,483	394,560,782
2004	190,634,340	22,630,247	150,579,108	14,134,904	33,675,616	411,654,214
2005	203,528,613	21,171,390	148,166,001	13,139,906	27,108,524	413,114,433
2006	203,861,646	20,997,885	154,068,322	12,680,253	31,399,111	423,007,217
2007	207,459,968	21,433,089	159,579,244	11,948,729	36,272,537	436,693,567

Source: 1980 through 2006 data taken from the 2007-2008 Academic Year, Iowa Community Colleges, Tuition and Fees Report, issued July 2007 (Source: AS-15E's, Fund 1); Annual Report, Fiscal Year 2006-2007 (AS-15E), Unrestricted General Fund, Fund 1.
 Table is adjusted for inflation using the CPI-U.



COMMUNITY COLLEGES &
WORKFORCE PREPARATION

Grimes State Office Building
Des Moines, IA 50319-0146

Phone: 515-281-3636
Fax: 515-281-6544
www.state.ia.us/educate

Roger Utman, Ph.D.
Interim Administrator
Bureau Chief
515-281-3542
roger.utman@iowa.gov

Tom Schenk Jr
Consultant
515-281-3753
tom.schenk@iowa.gov

Jeremy Varner
Consultant
515-281-3866
jeremy.varner@iowa.gov

Helping Communities Meet the Learning Needs of All Their Children and Adults

State of Iowa
Department of Education
Grimes State Office Building
Des Moines, Iowa
50319-0146

State Board of Education

Rosie Hussey, President, Clear Lake
Charles C. Edwards, Jr., Vice President, Des Moines
Sister Jude Fitzpatrick, West Des Moines
Brian Gentry, Des Moines
Joan Jaimes, Marshalltown
Wayne Kobberdahl, Council Bluffs
Valorie J. Kruse, Sioux City
Max Phillips, Woodward
LaMetta Wynn, Clinton
Kameron Dodge, (Student Member), Cambridge

Administration

Judy A. Jeffrey, Director and Executive Office
of the State Board of Education
Gail M. Sullivan, Chief of Staff

DIVISION OF COMMUNITY COLLEGES AND WORKFORCE PREPARATION

**BUREAU OF COMMUNITY COLLEGES AND
CAREER AND TECHNICAL EDUCATION**

Roger Utman, Ph.D., Interim Administrator,
Bureau Chief
Tom Schenk Jr., Consultant
Jeremy Varner, Consultant

It is the policy of the Iowa Department of Education not to discriminate on the basis of race, creed, color, sex, sexual orientation, gender identity, national origin, gender, disability, religion, age, political party affiliation, or actual or potential parental, family or marital status in its programs, activities, or employment practices as required by the Iowa Code sections 216.9 and 256.10(2), Titles VI and VII of the Civil Rights Act of 1964 (42 U.S.C. § 2000d and 2000e), the Equal Pay Act of 1973 (29 U.S.C. § 206, *et seq.*), Title IX (Educational Amendments, 20 U.S.C. §§ 1681 – 1688), Section 504 (Rehabilitation Act of 1973, 29 U.S.C. § 794), and the Americans with Disabilities Act (42 U.S.C. § 12101, *et seq.*).

If you have questions or grievances related to compliance with this policy by the Iowa Department of Education, please contact the legal counsel for the Iowa Department of Education, Grimes State Office Building, Des Moines, IA 50319-0146, telephone number 515/281-5295; or the Director of the Office for Civil Rights, U.S. Department of