

TUITION & FEES REPORT

2012-2013



COMMUNITY COLLEGES
BUREAU OF ADULT, CAREER, AND COMMUNITY COLLEGE EDUCATION
www.educateiowa.gov/ccpublications/

Helping Communities Meet the Learning Needs of all Their Children and Adults

Iowa Department of Education
Division of Community Colleges
Grimes State Office Building
Des Moines, Iowa
50319-0146
Phone: 515-281-8260
Fax: 515-242-5988
www.educateiowa.gov

Colleen Hunt
Interim Administrator
515-281-8260
colleen.hunt@iowa.gov

Kent Farver, CPA
Consultant
515-281-3550
kent.farver@iowa.gov

Published:
September 2012

STATE OF IOWA
DEPARTMENT OF EDUCATION
GRIMES STATE OFFICE BUILDING
DES MOINES, IOWA

STATE BOARD OF EDUCATION
Rosie Hussey, President, Clear Lake
Charles C. Edwards, Jr., Vice President, Des Moines
Diane Crookham-Johnson, Oskaloosa
Sister Jude Fitzpatrick, West Des Moines
Michael L. Knedler, Council Bluffs
Valorie J. Kruse, Sioux City
Mike May, Spirit Lake
Max Phillips, Woodward
LaMetta Wynn, Clinton
McKenzie Baker, Student Member, Forest City

ADMINISTRATION
Jason E. Glass, Director and Executive Officer
of the State Board of Education
Gail M. Sullivan, Chief of Staff

DIVISION OF COMMUNITY COLLEGES
Colleen Hunt, Interim Administrator

BUREAU OF ADULT, CAREER, AND COMMUNITY COLLEGE EDUCATION
Kent Farver, CPA, Consultant



It is the policy of the Iowa Department of Education not to discriminate on the basis of race, creed, color, sex, sexual orientation, gender identity, national origin, gender, disability, religion, age, political party affiliation, or actual or potential parental, family or marital status in its programs, activities, or employment practices as required by the *Iowa Code* sections 216.9 and 256.10(2), Titles VI and VII of the Civil Rights Act of 1964 (42 U.S.C. § 2000d and 2000e), the Equal Pay Act of 1973 (29 U.S.C. § 206, et seq.), Title IX (Educational Amendments, 20 U.S.C. §§ 1681 – 1688) Section 504 (Rehabilitation Act of 1973, 29 U.S.C. § 794), and the Americans with Disabilities Act (42 U.S.C. § 12101, et seq.).

If you have questions or grievances related to compliance with this policy by the Iowa Department of Education, please contact the legal counsel for the Iowa Department of Education, Grimes State Office Building, 400 E 14th St, Des Moines IA 50319-0146, telephone number 515/281-5295, or the Director of the Office for Civil Rights, U.S. Department of Education, 111 N. Canal Street, Suite 1053, Chicago, IL 60606-7204.

Executive Summary

The average tuition for a full-time student enrolled in Iowa's community colleges will rise \$149 to \$4,097 in fiscal year 2013 (Table 1). The average tuition increase this year will be 3.77 percent. Since fiscal year 2004, tuition has grown an average of 5.31 percent per year.

The average mandatory fee charged by the community colleges is \$339.69 (Table 3). Five (5) community colleges do not charge students general fees (Table 15). As a result of the attached mandatory fees, the average tuition and fees per credit hour will rise to \$147.90, a 3.48 percent increase from fiscal year 2012.

In comparing regional tuition rates across the surrounding states in the Midwest, Iowa moved into third position as the third highest average tuition rate among the eight states surveyed. Minnesota and South Dakota continue to have the highest average tuition rates in this region (Table 7).

In fiscal year 2011, 57.28 percent of the community colleges' unrestricted operating revenue (Fund 1) came from tuition and fees. As Tables 4 and 5 show, this has gradually increased from the 1980 level (adjusted for inflation) of just over 24 percent, more than doubling in the last 30 years. During that same time period and using the same inflation adjusted numbers, state general aid has decreased from just over 49 percent in 1980, to 29 percent in 2011.

By law, community college tuition is not allowed to exceed the lowest resident tuition charged by Iowa's public universities. In fiscal year 2013, the average community college tuition will be 38 percent lower than the average public university tuition rate (Table 8).

About this Report

The community college tuition and fees report is prepared each fiscal year. The report includes trends in tuition and fees among Iowa's community colleges, as well as comparisons to Iowa's public universities and national comparisons.

Table of Contents

Exec. Summary	3
Resident Tuition	4
Fees	6
Revenue Sources	8
National Comparisons	10
Comparison with Iowa's Public Universities	12
Appendix	15

Iowa's Community Colleges Resident Tuition

Table 1 lists the average tuition, lowest tuition, and highest tuition charged at Iowa's community colleges for a full-time resident student. Iowa Code limits the total tuition for Iowa residents attending community colleges so as not to exceed the lowest tuition rate per semester charged by a public university for a full-time resident student. A full-time student in this report is a student who enrolls in 15 credit hours.

Average tuition increased \$1,526 from fiscal year 2004 to fiscal year 2013, an increase of 60 percent. Tuition gains averaged 5.31 percent each year.

The spread between tuition amounts has increased since 2004. The difference from the highest annual tuition to lowest annual tuition has increased from \$390 in fiscal year 2004 to \$742 in fiscal year 2013. As a percentage of the average tuition, this variance has increased from 15 percent in 2004 to over 18 percent in 2013.

Table 12 in the appendix lists the full-time resident tuition by college for arts and sciences and career and technical education (CTE) programs.

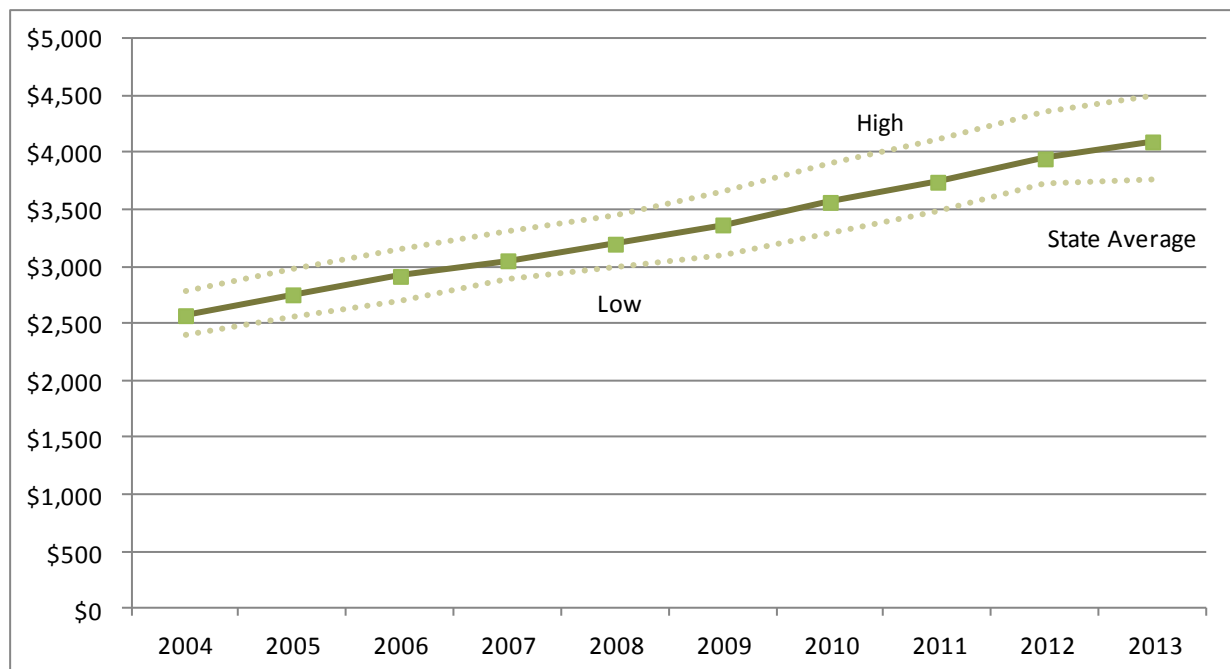
Table 1 - Annual Iowa Community Colleges Full-Time Resident Tuition

Fiscal Year	2004	2005	2006	2007	2008	2009	2010	2011	2012	2013
Low	\$2,400	\$2,550	\$2,700	\$2,880	\$2,996	\$3,106	\$3,293	\$3,491	\$3,720	\$3,758
High	\$2,790	\$2,970	\$3,150	\$3,300	\$3,450	\$3,660	\$3,900	\$4,110	\$4,350	\$4,500
State Average	\$2,571	\$2,754	\$2,916	\$3,053	\$3,199	\$3,368	\$3,566	\$3,743	\$3,948	\$4,097
Std. Deviation	107.54	109.67	119.04	127.77	140.38	159.98	180.67	195.18	185.55	211.54

SOURCE: 2011-2012 Academic Year Iowa's Community Colleges Tuition and Fees Report, issued September 2011; Electronic 2012-2013 tuition survey data submitted by Iowa's community colleges and compiled by the Iowa Department of Education. See Table 12.

NOTE: Annual rates are based on a projection of fall tuition rates. Based upon 15 credits per term.

Figure 1 - Annual Iowa Community Colleges Full-Time Resident Tuition



SOURCE: 2011-2012 Academic Year Iowa's Community Colleges Tuition and Fees Report, issued September 2011; Electronic 2012-2013 tuition survey data submitted by Iowa's community colleges and compiled by the Iowa Department of Education. See Table 12.

NOTE: Annual rates are based on a projection of fall tuition rates. Based upon 15 credits per term.

Iowa’s Community Colleges Resident Tuition (*continued*)

The tuition per credit hour is shown in Table 2. Over the past 10 years, the average tuition cost per credit hour has increased from \$85.69 to \$136.56 per credit hour. Courses generally range from three to five credit hours in a community college.

community colleges has increased. The difference between the highest per credit hour rate and lowest per credit hour rate increased from \$13 in fiscal year 2004 to \$24.75 in fiscal year 2013. Table 13 in the appendix lists tuition per credit hour by college.

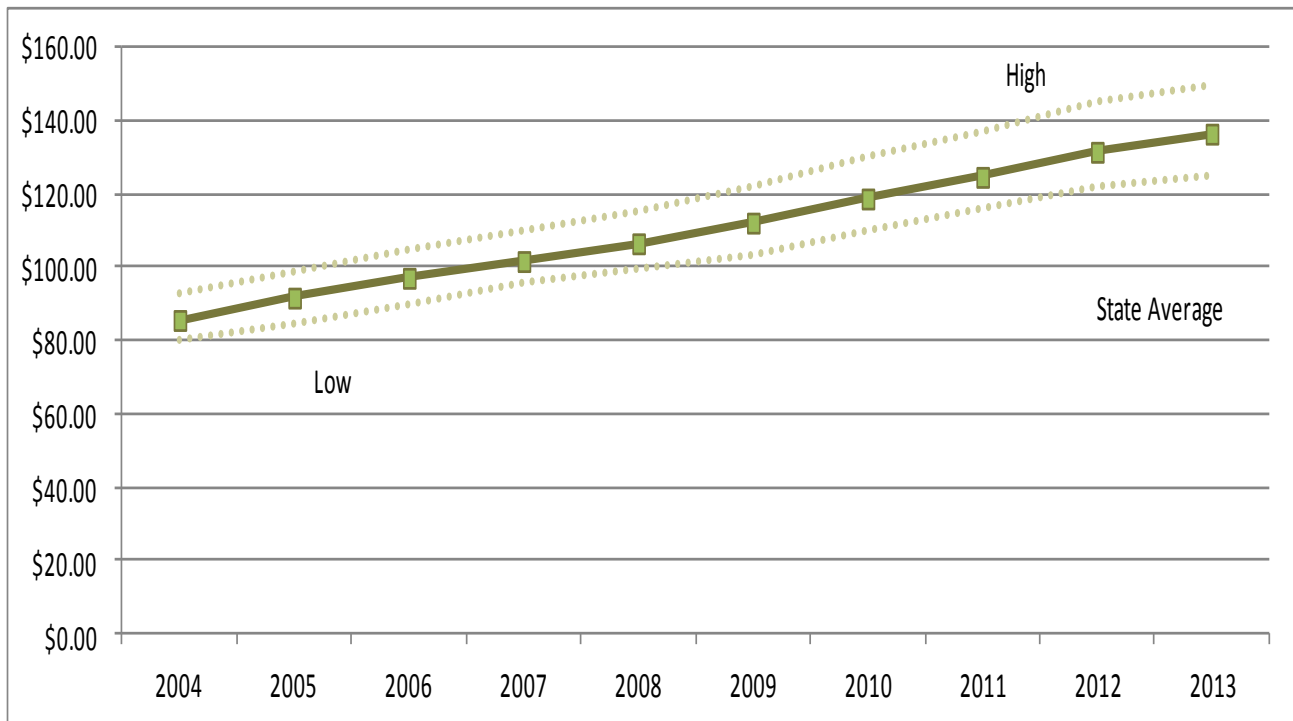
Similar to average tuition, the variance between the

Table 2 - Fall Resident Tuition Per Credit Hour

Fiscal Year	2004	2005	2006	2007	2008	2009	2010	2011	2012	2013
Low	\$80.00	\$85.00	\$90.00	\$96.00	\$99.85	\$103.55	\$109.76	\$116.35	\$122.20	\$125.25
High	\$93.00	\$99.00	\$105.00	\$110.00	\$115.00	\$122.00	\$130.00	\$137.00	\$145.00	\$150.00
State Average	\$85.69	\$91.79	\$97.20	\$101.77	\$106.62	\$112.27	\$118.85	\$124.76	\$131.61	\$136.56
Std. Deviation	\$3.58	\$3.66	\$3.97	\$4.26	\$4.68	\$5.33	\$6.16	\$6.51	\$6.18	\$7.05

SOURCE: 2011-2012 Academic Year, Iowa’s Community Colleges Tuition and Fees Report, issued September 2011; Electronic 2012-2013 tuition survey data submitted by Iowa’s community colleges and compiled by the Iowa Department of Education. See Table 13.

Figure 2 - Fall Resident Tuition Per Credit Hour



SOURCE: 2011-2012 Academic Year, Iowa’s Community Colleges, Tuition and Fees Report, issued September 2011; Electronic 2012-2013 tuition survey data submitted by Iowa’s community colleges and compiled by the Iowa Department of Education.

Iowa's Community Colleges Mandatory Fees

Table 3 reflects the basic mandatory fees charged at each community college. Some colleges do not charge a separate fee in addition to their tuition charge. Moreover, these fees do not include any program specific fees.

In fiscal year 2013, average fees will increase \$.60 to \$339.69. Average mandatory tuition fees have grown 3.24

percent per year since fiscal year 2004.

Table 15 in the appendix of this report lists regular, recurring fees charged by each college. This is not an all-inclusive list of fees charged by the individual community colleges.

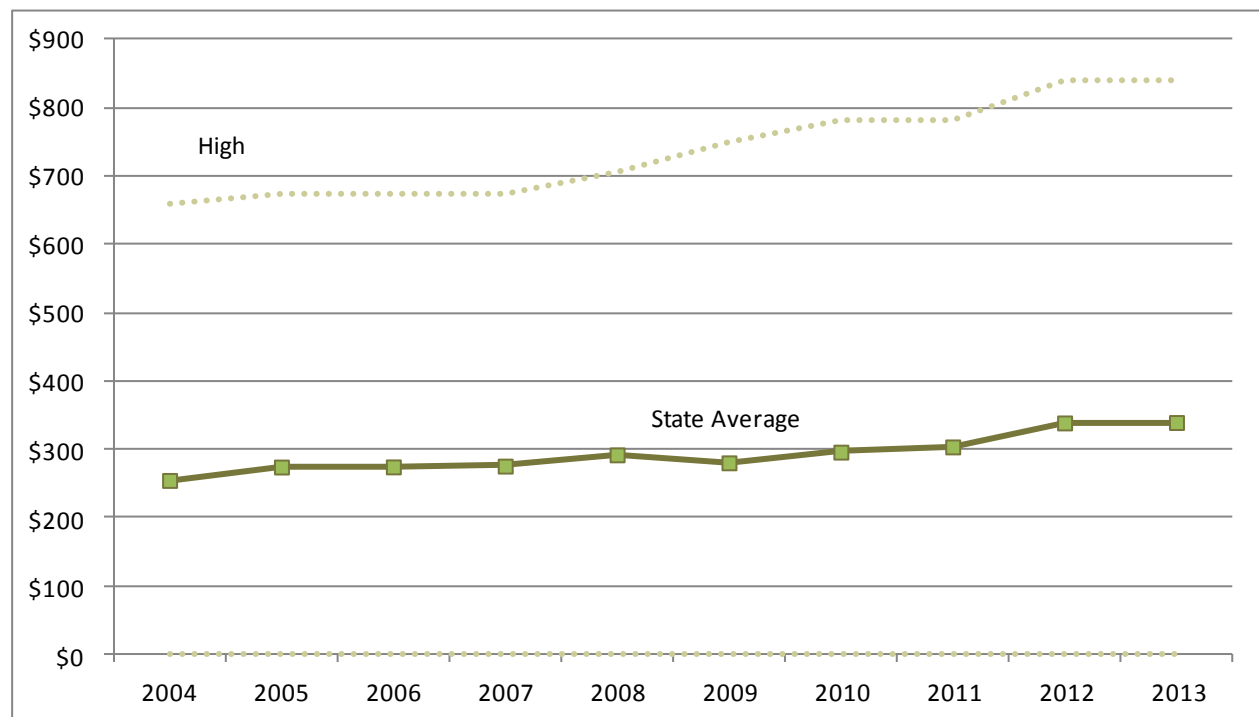
Table 3 - Annual Iowa Community Colleges Full-Time Mandatory Fees

Fiscal Year	2004	2005	2006	2007	2008	2009	2010	2011	2012	2013
Low	\$0	\$0	\$0	\$0	\$0	\$0	\$0	\$0	\$0	\$0
High	\$660	\$675	\$675	\$675	\$705	\$750	\$780	\$780	\$840	\$840
State Average	\$254.97	\$274.57	\$274.77	\$275.93	\$292.37	\$280.73	\$296.39	\$303.99	\$339.09	\$339.69

SOURCE: 2011-2012 Academic Year, Iowa's Community Colleges, Tuition and Fees Report, Issued September 2011; Electronic 2012-2013 tuition survey data submitted by Iowa's community colleges and compiled by the Iowa Department of Education. See Tables 12.

NOTE: Annual rates are based on a projection of fall tuition rates. Based upon 15 credits per term.

Figure 3 - Annual Iowa Community Colleges Full-Time Mandatory Fees



SOURCE: 2011-2012 Academic Year, Iowa's Community Colleges, Tuition and Fees Report, Issued September 2011; Electronic 2012-2013 tuition survey data submitted by Iowa's community colleges and compiled by the Iowa Department of Education. See Tables 12.

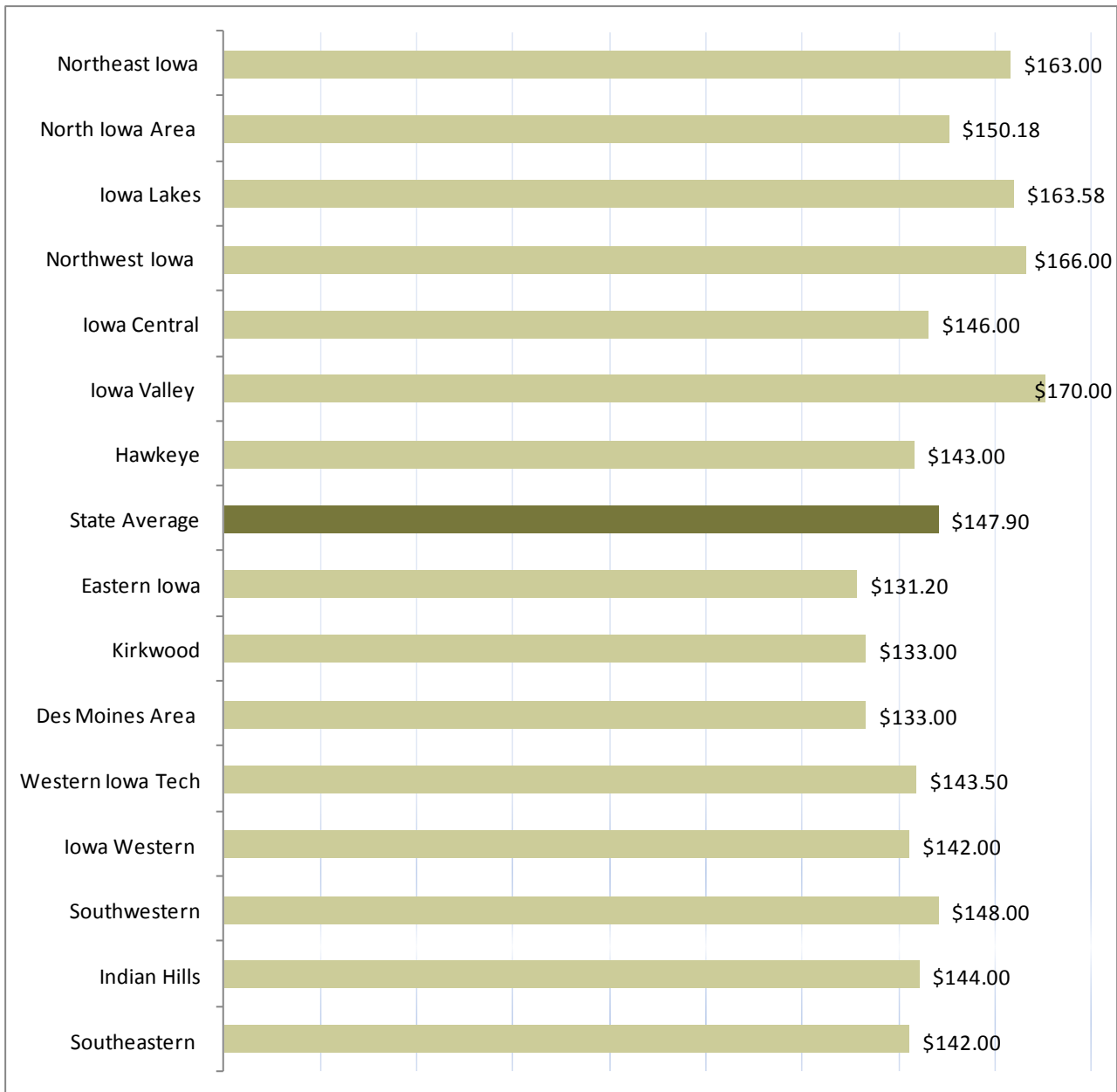
NOTE: Annual rates are based on a projection of fall tuition rates. Based upon 15 credits per term.

Tuition and Mandatory Fees per Credit Hour

Figure 4 shows the per credit hour tuition and mandatory fees. Notwithstanding additional fees, this represents the cost of enrolling in a community college. The average tuition and mandatory fees charged per credit hour will increase \$4.98 per

hour in fiscal 2013 to \$147.90. This is a 3.48 percent increase from the previous year. See Table 13 for a listing of individual tuition and fees charged by each community college.

Figure 4 - Resident Tuition and Mandatory Fees Per Credit Hour: Fiscal Year 2013



SOURCE: Appendix -Table 11 for Tuition and Fees amounts. See Table 13.

Revenue Sources for Iowa's Community Colleges

Tables 4 and 5 reflect the major sources of revenue for the system of Iowa's community colleges adjusted for inflation. Tuition and fees is the largest share of general operating fund revenues.

This revenue comprises 57 percent of total revenues. State, local,

and federal funding shares remain at 25-year lows (see Figure 5). State support has been reduced from a high of just under 50 percent in fiscal year 1980 down to just under 30 percent in fiscal year 2011. Local funding is down from just over 12 percent in fiscal year 1980 down to just under 5 percent in fiscal year 2011.

Table 4 - Adjusted General Operating Fund Revenues by Source

Fiscal Year	Tuition & Fees	Local	State	Federal	Other Income
1980	\$58,794,604	\$29,133,507	\$119,363,414	\$26,890,058	\$6,914,116
1985	\$81,580,293	\$28,199,866	\$119,618,982	\$16,206,309	\$11,704,001
1990	\$102,131,108	\$25,575,071	\$152,093,036	\$16,676,907	\$14,917,821
1995	\$130,093,644	\$22,581,480	\$169,190,337	\$14,248,893	\$16,227,327
2000	\$157,656,228	\$23,724,882	\$184,707,348	\$13,827,984	\$27,023,241
2001	\$159,089,779	\$23,863,964	\$185,607,872	\$13,859,313	\$25,474,827
2002	\$178,970,452	\$24,414,223	\$171,087,133	\$14,341,449	\$23,392,277
2003	\$191,379,079	\$24,498,200	\$167,967,827	\$14,808,173	\$24,544,344
2004	\$206,077,293	\$24,463,484	\$162,777,257	\$15,279,948	\$36,403,618
2005	\$221,733,641	\$23,065,107	\$161,419,008	\$14,315,232	\$29,533,300
2006	\$219,805,351	\$22,640,097	\$166,117,768	\$13,671,956	\$33,854,787
2007	\$225,710,697	\$23,318,607	\$173,617,796	\$12,999,886	\$39,463,515
2008	\$230,209,759	\$22,873,394	\$179,411,023	\$12,223,258	\$40,425,649
2009	\$247,477,437	\$24,141,325	\$188,070,813	\$12,451,017	\$26,625,564
2010	\$285,155,042	\$24,683,534	\$151,181,674	\$35,474,537	\$31,767,330
2011	\$308,633,060	\$25,406,419	\$158,754,232	\$14,478,452	\$31,507,835

SOURCE: 1980 through 2010 data taken from the 2011-2012 Academic Year, Iowa's Community Colleges Tuition and Fees Report, issued September 2011 (source: AS-15E's, Fund 1); Annual Report Fiscal Year 2011 (AS-15E), Unrestricted General Fund, Fund 1. See Table 16.

NOTE: Amounts are adjusted for inflation to 2011 levels using December rates from the Consumer Price Index-Urban. Revenues for unrestricted funds only.

Table 5 - General Operating Fund Revenues by Source as a Percentage of Total Revenues

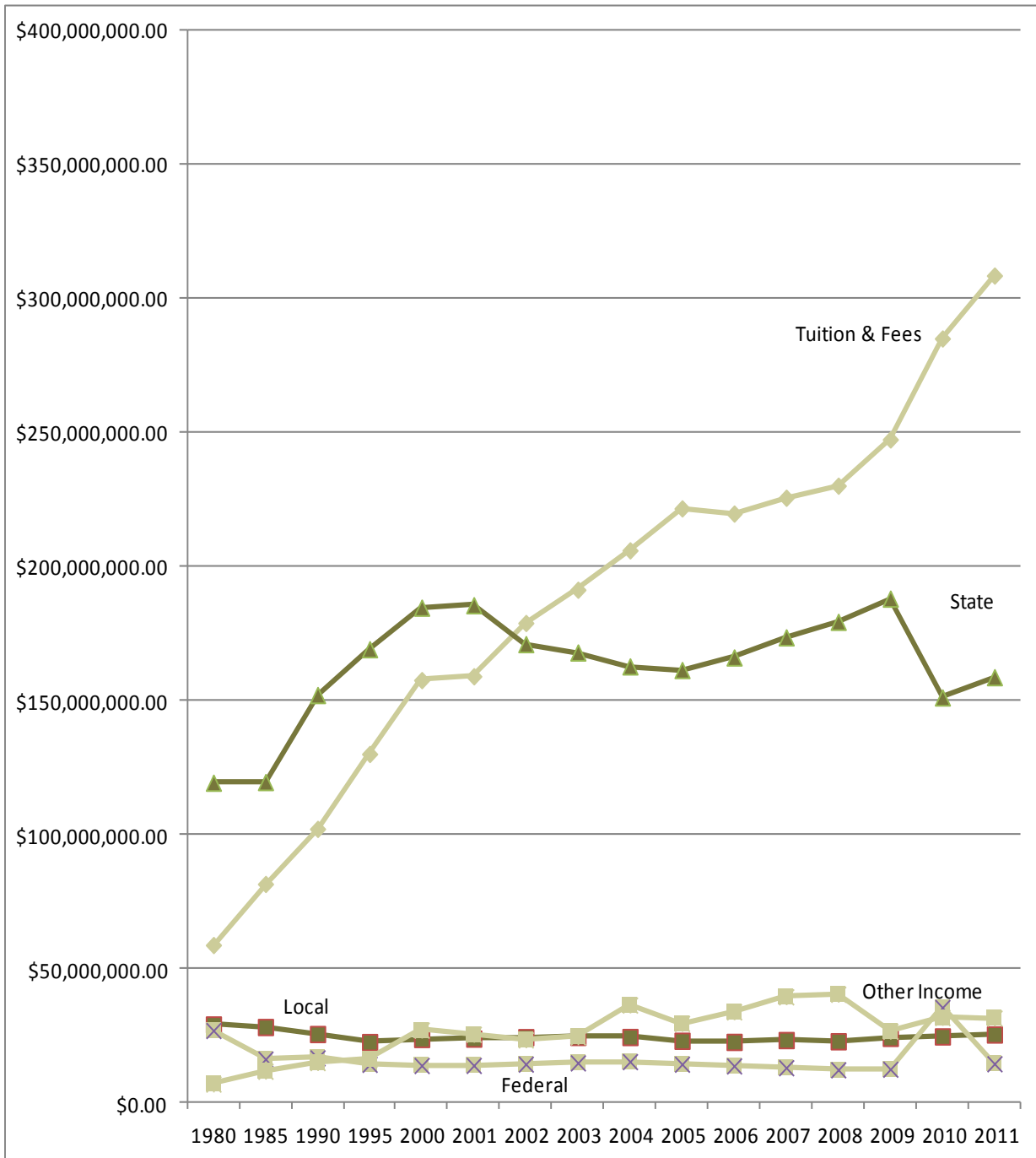
Fiscal Year	Tuition & Fees	Local	State	Federal	Other Income
1980	24.39%	12.08%	49.51%	11.15%	2.87%
1985	31.71%	10.96%	46.49%	6.30%	4.55%
1990	32.80%	8.21%	48.84%	5.36%	4.79%
1995	36.92%	6.41%	48.02%	4.04%	4.61%
2000	38.74%	5.83%	45.39%	3.40%	6.64%
2001	39.00%	5.85%	45.50%	3.40%	6.25%
2002	43.42%	5.92%	41.51%	3.48%	5.67%
2003	45.22%	5.79%	39.69%	3.50%	5.80%
2004	46.31%	5.50%	36.58%	3.43%	8.18%
2005	49.27%	5.12%	35.87%	3.18%	6.56%
2006	48.19%	4.96%	36.42%	3.00%	7.42%
2007	47.51%	4.91%	36.54%	2.74%	8.31%
2008	47.45%	4.71%	36.98%	2.52%	8.33%
2009	49.62%	4.84%	37.71%	2.50%	5.34%
2010	53.98%	4.67%	28.62%	6.72%	6.01%
2011	57.28%	4.72%	29.47%	2.69%	5.85%

SOURCE: 1980 through 2010 data taken from the 2011-2012 Academic Year, Iowa's Community Colleges Tuition and Fees Report, issued September 2011 (Source: AS-15E's, Fund 1); Annual Report Fiscal Year 2011 (AS-15E), Unrestricted General Fund, Fund 1. See Table 16.

NOTE: Amounts are adjusted for inflation to 2011 levels using December rates from the Consumer Price Index-Urban. Revenues for unrestricted funds only.

Tuition as a Revenue Source

Figure 5 - Adjusted General Operating Fund Revenues by Source: 1980-2011



SOURCE: 1980 through 2010 data taken from the 2011-2012 Academic Year, Iowa's Community Colleges Tuition and Fees Report, issued September 2011; Annual Report Fiscal Year 2011 (AS-15E), Unrestricted General Fund, Fund 1.
 NOTE: Amounts are adjusted for inflation to 2011 levels using December from the Consumer Price Index-Urban. Revenues for unrestricted funds only.

National Comparison of Tuition and Fees

The following information uses data from *The Chronicle of Higher Education, Almanac Issue 2011-2012*. This report provides data through 2010, which is the most recent national higher education tuition data available. The information will differ from the previous section as the *Chronicle* data is based on information supplied to the U.S. Department of Education and includes student fees. Iowa Department of Education tables are based on information provided and verified by Iowa's community colleges to the Iowa Department of Education.

From fiscal year 2003 to fiscal year 2010, average tuition at

Iowa's community colleges increased 55 percent while the national average increased 39 percent (see Table 6). Tuition and fees are still 56 percent above the national average.

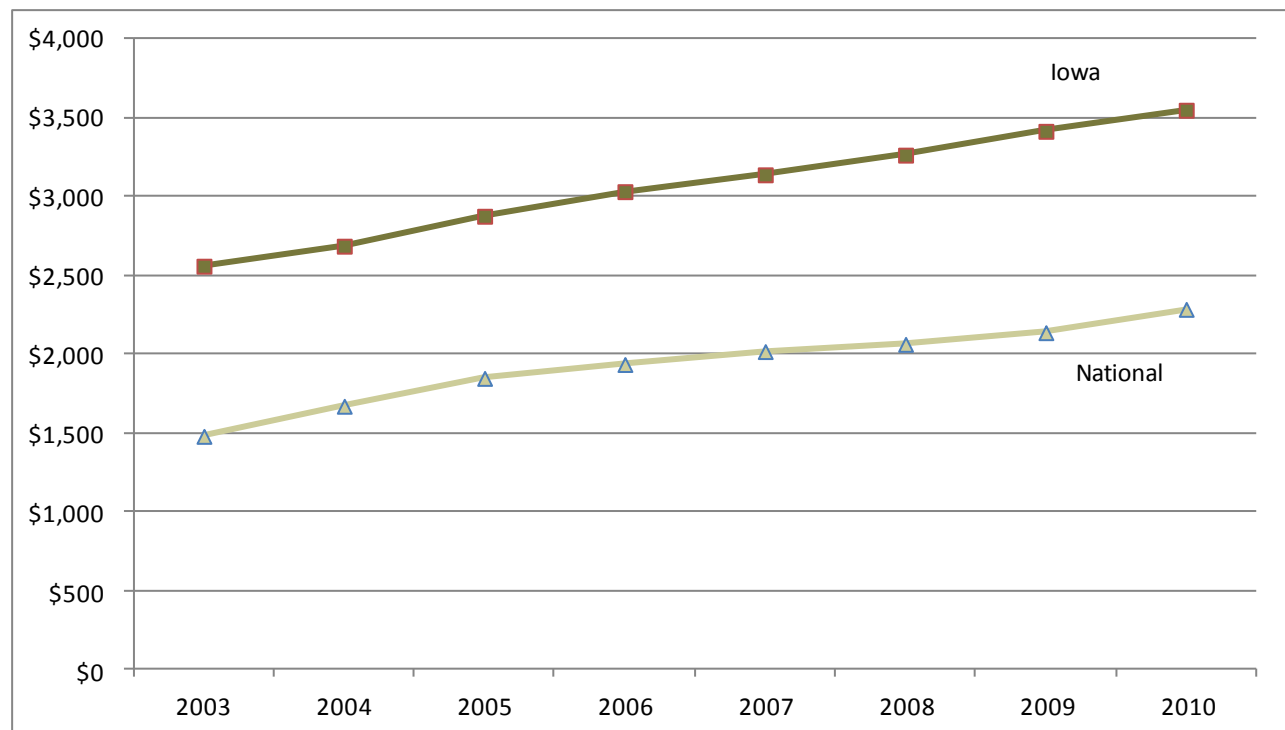
Iowa has the third highest tuition and fees level of its contiguous states (see Table 7). Minnesota and South Dakota continue to have the highest average tuition rates in this region. Iowa has the second smallest percentage change in tuition and fees from 2003-2010.

Table 6 - National and State Average Community College Tuition and Fees

	Fiscal Year								Change	Change
	2003	2004	2005	2006	2007	2008	2009	2010	2003-2010	2003-2010
National	\$1,479	\$1,670	\$1,847	\$1,935	\$2,017	\$2,063	\$2,137	\$2,285	\$806	55%
Iowa	\$2,559	\$2,686	\$2,876	\$3,032	\$3,139	\$3,264	\$3,415	\$3,549	\$990	39%

SOURCE: 2011-2012 Academic Year, Iowa's Community Colleges, Tuition and Fees Report, issued September 2011. *The Chronicle of Higher of Education Almanac Issue 2011-2012*.

Figure 6 - National and State Average Community College Tuition and Fees



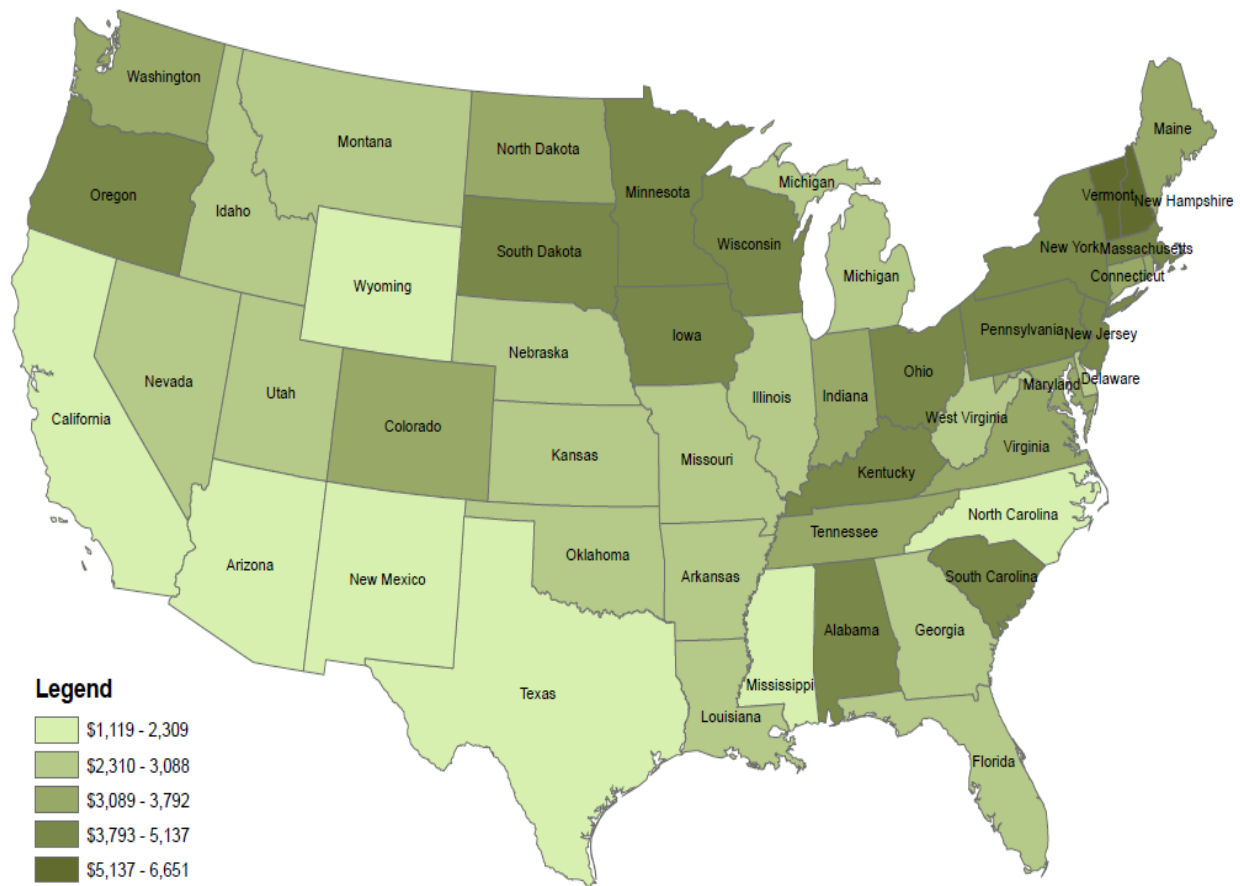
SOURCE: 2011-2012 Academic Year, Iowa's Community Colleges, Tuition and Fees Report, issued September 2011. *The Chronicle of Higher of Education Almanac Issue 2011-2012*.

Regional Comparison of Tuition and Fees

Table 7 - Comparison of Average Tuition and Fees with Surrounding States

	Fiscal Year									Change 2003-2010	Change 2003-2010
	2003	2004	2005	2006	2007	2008	2009	2010			
Minnesota	\$2,880	\$2,812	\$3,839	\$4,085	\$4,359	\$4,535	\$4,614	\$4,791	\$2,045	74%	
South Dakota	\$3,167	\$3,414	\$2,840	\$3,154	\$3,495	\$3,730	\$3,931	\$4,357	\$1,393	47%	
Iowa	\$2,559	\$2,686	\$2,876	\$3,032	\$3,139	\$3,264	\$3,415	\$3,549	\$1,187	50%	
Wisconsin	\$2,555	\$2,583	\$2,796	\$2,965	\$3,163	\$3,694	\$3,536	\$3,543	\$1,233	53%	
Missouri	\$1,792	\$1,940	\$2,128	\$2,247	\$2,284	\$2,385	\$2,456	\$2,406	\$908	61%	
Illinois	\$1,662	\$1,792	\$1,952	\$2,104	\$2,252	\$2,377	\$2,519	\$2,670	\$1,101	70%	
Kansas	\$1,640	\$1,783	\$1,882	\$1,938	\$1,942	\$2,029	\$2,091	\$2,212	\$771	54%	
Nebraska	\$1,567	\$1,678	\$1,772	\$1,899	\$1,991	\$2,128	\$2,220	\$2,248	\$750	50%	

SOURCE: 2011-2012 Academic Year, Iowa's Community Colleges, Tuition and Fees Report, issued September 2011. *The Chronicle of Higher Education Almanac Issue 2011-2012.*



SOURCE: *The Chronicle of Higher Education* web site (Chronicle.com), information for 2011-2012.

Tuition Comparison with Iowa's Public Universities

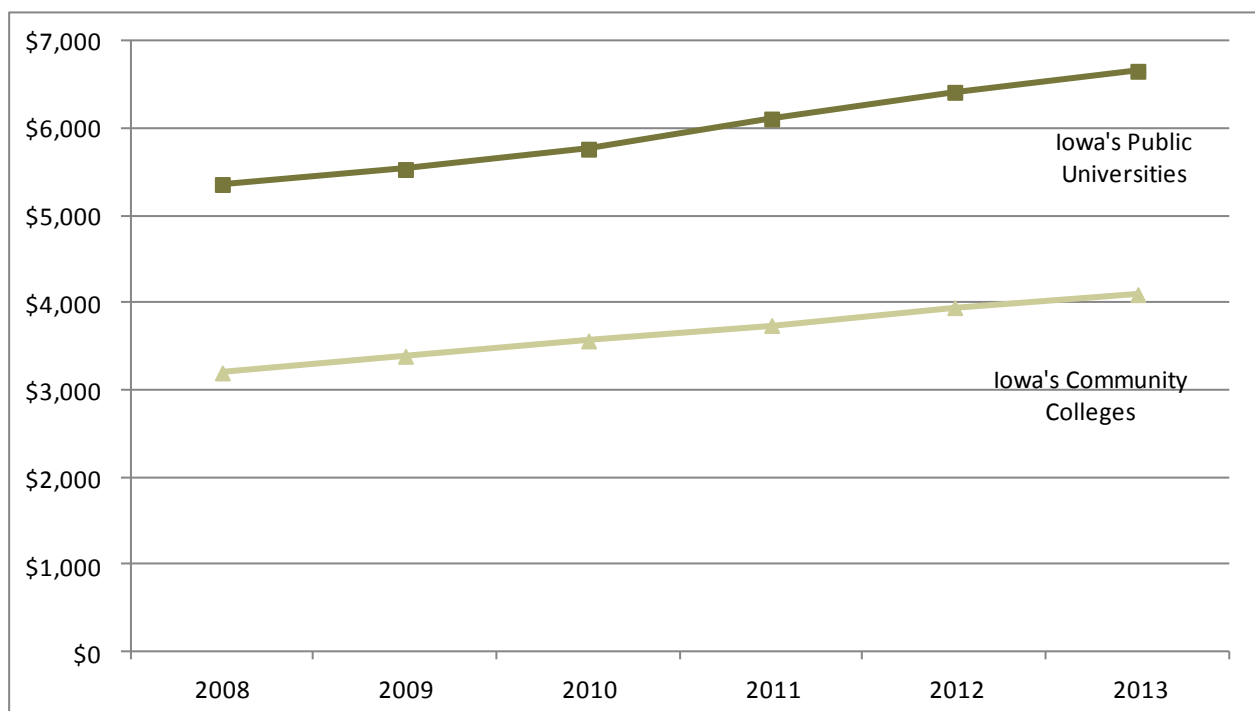
Tables 8, 9, and 10 provide a comparison of Iowa's community colleges average annual full-time resident tuition rate to the average tuition rate of Iowa's public universities. By law, community college tuition cannot exceed the minimum tuition at the public universities. In 2013, community college tuition will be 38 percent lower than the public university average tuition. Iowa's public universities increased tuition 3.76 percent in fiscal year 2013 compared to the 3.77 percent gain for Iowa community colleges.

Table 8 - Annual Full-Time Tuition Rates Comparison

	Fiscal Year						Change 2008-2013	Change 2008-2013
	2008	2009	2010	2011	2012	2013		
Iowa's Community Colleges	\$ 3,199	\$ 3,390	\$ 3,566	\$ 3,743	\$ 3,948	\$ 4,097	\$ 898	28%
Iowa's Public Universities	\$ 5,360	\$ 5,532	\$ 5,765	\$ 6,111	\$ 6,417	\$ 6,658	\$ 1,298	24%

SOURCE: 2011-2012 Academic Year, Iowa's Community Colleges Tuition and Fees Report, issued September 2011; Electronic 2012-2013 tuition survey data submitted by Iowa's community colleges and compiled by the Iowa Department of Education; Public university information obtained from the Iowa Board of Regents' website.

Figure 8 - Annual Full-Time Tuition Comparison



SOURCE: 2011-2012 Academic Year, Iowa's Community Colleges Tuition and Fees Report, issued September 2011; Electronic 2012-2013 tuition survey data submitted by Iowa's community colleges and compiled by the Iowa Department of Education; Public university information obtained from the Iowa Board of Regents' website.

NOTE: Annual rates are based on a projection of fall tuition rates. 15 hours per semester for Iowa's community colleges; full-time for Iowa's public universities.

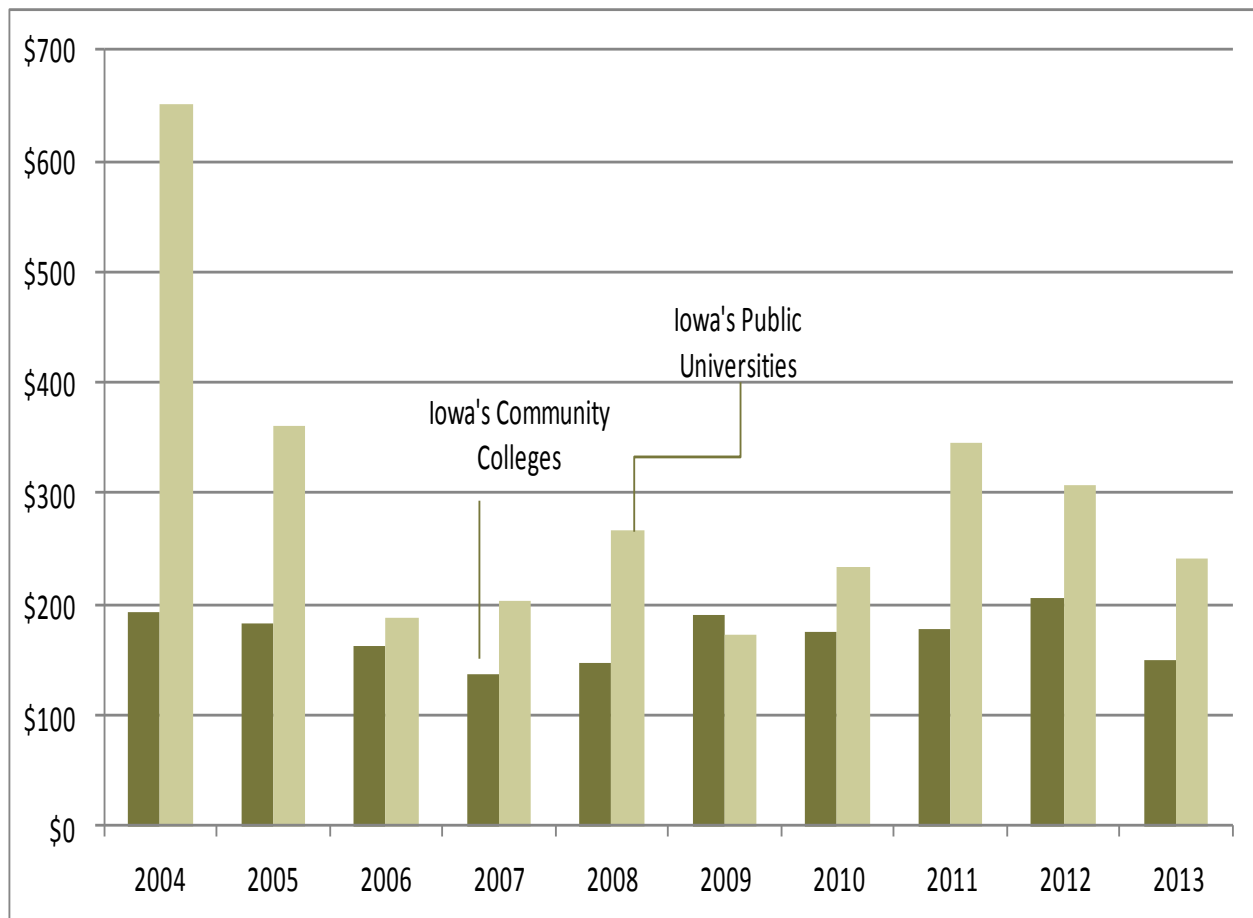
Tuition Comparison with Iowa’s Public Universities (*continued*)

Table 9 - Annual Full-Time Tuition Increase for Iowa’s Public Universities and Iowa’s Community Colleges

Fiscal Year	2008	2009	2010	2011	2012	2013
Iowa’s Community Colleges	\$146	\$191	\$176	\$177	\$205	\$149
Iowa’s Public Universities	\$ 266	\$172	\$ 233	\$ 346	\$306	\$241

SOURCE: 2011-2012 Academic Year Iowa’s Community Colleges Tuition and Fees Report, issued September 2011; Electronic 2012-2013 tuition survey data submitted by Iowa’s community colleges and compiled by the Iowa Department of Education; Public university information obtained from the Iowa Board of Regents’ website.

Figure 9 - Annual Average Full-Time Tuition Increase



SOURCE: 2011-2012 Academic Year Iowa’s Community Colleges Tuition and Fees Report, issued September 2011; Electronic 2012-2013 tuition survey data submitted by Iowa’s community colleges and compiled by the Iowa Department of Education; Public university information obtained from the Iowa Board of Regents’ website.
 NOTE: Annual rates are based on a projection of fall tuition rates. 15 hours per semester for Iowa’s community colleges; full-time for Iowa’s public universities.

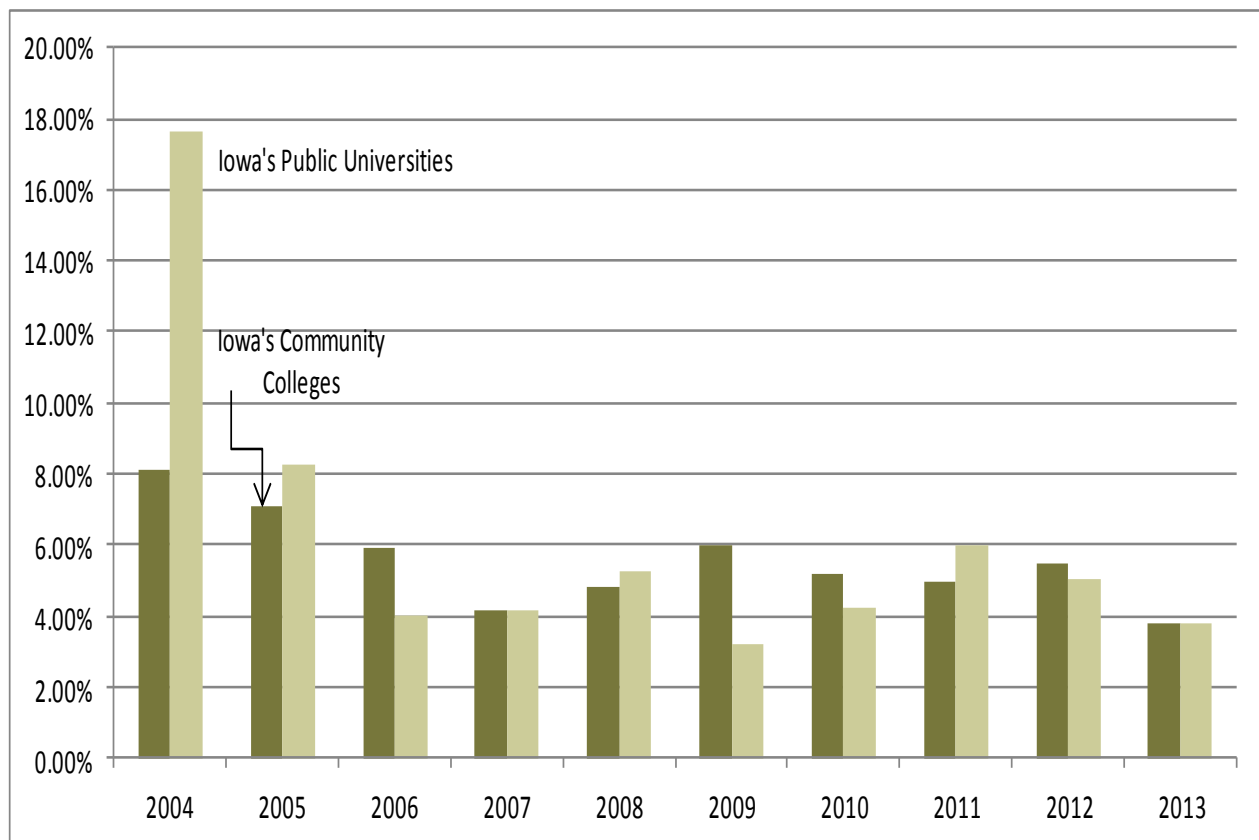
Tuition Comparison with Iowa's Public Universities (*continued*)

Table 10 - Annual Average Percentage Increase in Full-Time Tuition

	2008	2009	2010	2011	2012	2013
Iowa's Community Colleges	4.78%	5.97%	5.86%	4.96%	5.49%	3.77%
Iowa's Public Universities	5.22%	3.21%	4.21%	6.00%	5.00%	3.76%

SOURCE: 2011-2012 Academic Year, Iowa's Community Colleges, Tuition and Fees Report, issued September 2011; Electronic 2012-2013 tuition survey data submitted by Iowa's community colleges and compiled by the Iowa Department of Education; public university information obtained from the Iowa Board of Regents' website.

Figure 10 - Annual Average Percentage Increase in Full-Time Tuition



SOURCE: 2011-2012 Academic Year, Iowa's Community Colleges, Tuition and Fees Report, issued September 2011; Electronic 2012-2013 tuition survey data submitted by Iowa's community colleges and compiled by the Iowa Department of Education; Public university information obtained from the Iowa Board of Regents' website.
NOTE: Annual rates are based on a projection of fall tuition rates. 15 hours per semester for Iowa's community colleges; full-time for Iowa's public universities.

Appendix

Table 11 - Resident Tuition and Fees Based on 12 Credit Hours per Term: 2011-2013

Community College	2011-2012			2012-2013			Increases			Percent Increase
	Tuition	Fees	Total	Tuition	Fees	Total	Tuition	Fees	Total	
Northeast Iowa	\$3,480.00	\$312.00	\$3,792.00	\$3,600.00	\$312.00	\$3,912.00	\$120.00	\$0.00	\$120.00	3.16%
North Iowa Area	\$2,932.80	\$591.12	\$3,523.92	\$3,006.00	\$598.32	\$3,604.32	\$73.20	\$7.20	\$80.40	2.28%
Iowa Lakes	\$3,336.00	\$422.00	\$3,758.00	\$3,504.00	\$422.00	\$3,926.00	\$168.00	\$0.00	\$168.00	4.47%
Northwest Iowa	\$3,168.00	\$672.00	\$3,840.00	\$3,312.00	\$672.00	\$3,984.00	\$144.00	\$0.00	\$144.00	3.75%
Iowa Central	\$3,024.00	\$336.00	\$3,360.00	\$3,168.00	\$336.00	\$3,504.00	\$144.00	\$0.00	\$144.00	4.29%
Iowa Valley	\$3,336.00	\$624.00	\$3,960.00	\$3,456.00	\$624.00	\$4,080.00	\$120.00	\$0.00	\$120.00	3.03%
Hawkeye	\$3,192.00	\$144.00	\$3,336.00	\$3,288.00	\$144.00	\$3,432.00	\$96.00	\$0.00	\$96.00	2.88%
Eastern Iowa	\$3,072.00	\$0.00	\$3,072.00	\$3,148.80	\$0.00	\$3,148.80	\$76.80	\$0.00	\$76.80	2.50%
Kirkwood	\$3,072.00	\$0.00	\$3,072.00	\$3,192.00	\$0.00	\$3,192.00	\$120.00	\$0.00	\$120.00	3.91%
Des Moines Area	\$3,144.00	\$0.00	\$3,144.00	\$3,192.00	\$0.00	\$3,192.00	\$48.00	\$0.00	\$48.00	1.53%
Western Iowa Tech	\$2,976.00	\$372.00	\$3,348.00	\$3,072.00	\$372.00	\$3,444.00	\$96.00	\$0.00	\$96.00	2.87%
Iowa Western	\$3,024.00	\$312.00	\$3,336.00	\$3,096.00	\$312.00	\$3,408.00	\$72.00	\$0.00	\$72.00	2.16%
Southwestern	\$3,096.00	\$288.00	\$3,384.00	\$3,264.00	\$288.00	\$3,552.00	\$168.00	\$0.00	\$168.00	4.96%
Indian Hills	\$3,288.00	\$0.00	\$3,288.00	\$3,456.00	\$0.00	\$3,456.00	\$168.00	\$0.00	\$168.00	5.11%
Southeastern	\$3,240.00	\$0.00	\$3,240.00	\$3,408.00	\$0.00	\$3,408.00	\$168.00	\$0.00	\$168.00	5.19%
State Average	\$3,158.72	\$271.54	\$3,430.26	\$3,277.52	\$272.02	\$3,549.54	\$118.80	\$0.48	\$119.28	3.47%
Std. Dev. (C.C.)	\$148.44	\$232.68	\$273.53	\$169.23	\$233.34	\$287.33	\$39.19	\$1.80	\$38.67	3.49%
Iowa Public Universities	\$6,417.00	\$1,116.20	\$7,140.57	\$6,658.00	\$1,147.87	\$7,805.87	\$241.00	\$31.67	\$665.30	3.57%

Source: 2011-2012 Academic Year. Iowa Community Colleges, Tuition and Fees Report, Issued September 2011; Electronic 2012-2013 tuition survey data submitted by Iowa Community Colleges and compiled by the Iowa Department of Education. Iowa Board of Regents, Tuition Rates. Note: Indians Hills shown for three 12-week terms. 8 credits per term equals 12 per semester. Only fees charged for all students are included. Other fees for lab or specific programs are not included.

Table 12 - Resident Tuition and Fees Based on 15 Credit Hours Per Term: 2011-2013

Community College	2011-2012			2012-2013			Increases			Percent Increase
	Tuition	Fees	Total	Tuition	Fees	Total	Tuition	Fees	Total	
Northeast Iowa	\$4,350.00	\$390.00	\$4,740.00	\$4,500.00	\$390.00	\$4,890.00	\$150.00	\$0.00	\$150.00	3.16%
North Iowa Area	\$3,666.00	\$738.90	\$4,404.90	\$3,757.50	\$747.90	\$4,505.40	\$91.50	\$9.00	\$100.50	2.28%
Iowa Lakes	\$4,170.00	\$522.50	\$4,692.50	\$4,380.00	\$522.50	\$4,902.50	\$210.00	\$0.00	\$210.00	4.48%
Northwest Iowa	\$3,960.00	\$840.00	\$4,800.00	\$4,140.00	\$840.00	\$4,980.00	\$180.00	\$0.00	\$180.00	3.75%
Iowa Central	\$3,780.00	\$420.00	\$4,200.00	\$3,960.00	\$420.00	\$4,380.00	\$180.00	\$0.00	\$180.00	4.29%
Iowa Valley	\$4,170.00	\$780.00	\$4,950.00	\$4,320.00	\$780.00	\$5,100.00	\$150.00	\$0.00	\$150.00	3.03%
Hawkeye	\$3,990.00	\$180.00	\$4,170.00	\$4,110.00	\$180.00	\$4,290.00	\$120.00	\$0.00	\$120.00	2.88%
Eastern Iowa	\$3,840.00	\$0.00	\$3,840.00	\$3,936.00	\$0.00	\$3,936.00	\$96.00	\$0.00	\$96.00	2.50%
Kirkwood	\$3,840.00	\$0.00	\$3,840.00	\$3,990.00	\$0.00	\$3,990.00	\$150.00	\$0.00	\$150.00	3.91%
Des Moines Area	\$3,930.00	\$0.00	\$3,930.00	\$3,990.00	\$0.00	\$3,990.00	\$60.00	\$0.00	\$60.00	1.53%
Western Iowa Tech	\$3,720.00	\$465.00	\$4,185.00	\$3,840.00	\$465.00	\$4,305.00	\$120.00	\$0.00	\$120.00	2.87%
Iowa Western	\$3,780.00	\$390.00	\$4,170.00	\$3,870.00	\$390.00	\$4,260.00	\$90.00	\$0.00	\$90.00	2.16%
Southwestern	\$3,870.00	\$360.00	\$4,230.00	\$4,080.00	\$360.00	\$4,440.00	\$210.00	\$0.00	\$210.00	4.96%
Indian Hills	\$4,110.00	\$0.00	\$4,110.00	\$4,320.00	\$0.00	\$4,320.00	\$210.00	\$0.00	\$210.00	5.11%
Southeastern	\$4,050.00	\$0.00	\$4,050.00	\$4,260.00	\$0.00	\$4,260.00	\$210.00	\$0.00	\$210.00	5.19%
State Average	\$3,948.40	\$339.09	\$4,287.49	\$4,096.90	\$339.69	\$4,436.59	\$148.50	\$0.60	\$149.10	3.47%
Std. Dev. (C.C.)	\$185.55	\$290.64	\$341.51	\$211.54	\$291.47	\$358.72	\$48.99	\$2.24	\$48.34	3.49%
Iowa Public Universities	\$6,417.00	\$1,116.20	\$7,140.57	\$6,658.00	\$1,147.87	\$7,805.87	\$241.00	\$31.67	\$665.30	3.58%

Source: 2011-2012 Academic Year, Iowa Community Colleges, Tuition and Fees Report, Issued September 2011; Electronic 2012-2013 tuition survey data submitted by Iowa Community Colleges and compiled by the Iowa Department of Education, Iowa Board of Regents, Tuition Rates. Note: Indiana Hills shown for three 12-week terms. 8 credits per term equals 12 per semester. Only fees charged for all students are included. Other fees for lab or specific programs are not included.

Table 13 - Resident Tuition and Fees Per Credit Hour: 2011-2013 Academic Years

Community College	Tuition per Semester Hour			Tuition and Fees per Hour		
	2011-2012	2012-2013	Increase	2011-2012	2012-2013	Increase
Northeast Iowa	\$145.00	\$150.00	\$5.00	\$158.00	\$163.00	\$5.00
North Iowa Area	\$122.20	\$125.25	\$3.05	\$146.83	\$150.18	\$3.35
Iowa Lakes	\$139.00	\$146.00	\$7.00	\$156.42	\$163.58	\$7.17
Northwest Iowa	\$132.00	\$138.00	\$6.00	\$160.00	\$166.00	\$6.00
Iowa Central	\$126.00	\$132.00	\$6.00	\$140.00	\$146.00	\$6.00
Iowa Valley	\$139.00	\$144.00	\$5.00	\$165.00	\$170.00	\$5.00
Hawkeye	\$133.00	\$137.00	\$4.00	\$139.00	\$143.00	\$4.00
Eastern Iowa	\$128.00	\$131.20	\$3.20	\$128.00	\$131.20	\$3.20
Kirkwood	\$128.00	\$133.00	\$5.00	\$128.00	\$133.00	\$5.00
Des Moines Area	\$131.00	\$133.00	\$2.00	\$131.00	\$133.00	\$2.00
Western Iowa Tech	\$124.00	\$128.00	\$4.00	\$139.50	\$143.50	\$4.00
Iowa Western	\$126.00	\$129.00	\$3.00	\$139.00	\$142.00	\$3.00
Southwestern	\$129.00	\$136.00	\$7.00	\$141.00	\$148.00	\$7.00
Indian Hills	\$137.00	\$144.00	\$7.00	\$137.00	\$144.00	\$7.00
Southeastern	\$135.00	\$142.00	\$7.00	\$135.00	\$142.00	\$7.00
State Average	\$131.61	\$136.56	\$4.95	\$142.92	\$147.90	\$4.98
Standard Deviation	\$6.18	\$7.05	\$1.63	\$11.38	\$11.97	\$1.63

Source: 2011-2012 Academic Year, Iowa Community Colleges, Tuition and Fees Report, Issued September 2011; Electronic 2012-2013 tuition survey data submitted by Iowa community colleges and compiled by the Iowa Department of Education. Note: Indian Hills shown for three 12-week terms. 8 credits per term equals 12 per semester.

Table 14 - Non-Resident Tuition Per Credit Hour: 2011-2013 Academic Years

Community College	Tuition per Semester Hour			Annual with 24 Hours	Annual with 30 Hours	Percent Increase
	2011-2012	2012-2013	Increase			
Northeast Iowa	\$145.00	\$150.00	\$5.00	\$3,600.00	\$4,500.00	3.45%
North Iowa Area	\$183.30	\$187.90	\$4.60	\$4,509.60	\$5,637.00	2.51%
Iowa Lakes	\$141.00	\$148.00	\$7.00	\$3,552.00	\$4,440.00	4.96%
Northwest Iowa	\$154.00	\$154.00	\$0.00	\$3,696.00	\$4,620.00	0.00%
Iowa Central	\$189.00	\$198.00	\$9.00	\$4,752.00	\$5,940.00	4.76%
Iowa Valley *	\$160.00	\$165.00	\$5.00	\$3,960.00	\$4,950.00	3.13%
Hawkeye	\$158.00	\$162.00	\$4.00	\$3,888.00	\$4,860.00	2.53%
Eastern Iowa	\$192.00	\$196.80	\$4.80	\$4,723.20	\$5,904.00	2.50%
Kirkwood	\$153.00	\$158.00	\$5.00	\$3,792.00	\$4,740.00	3.27%
Des Moines Area	\$262.00	\$266.00	\$4.00	\$6,384.00	\$7,980.00	1.53%
Western Iowa Tech	\$133.00	\$133.00	\$0.00	\$3,192.00	\$3,990.00	0.00%
Iowa Western	\$131.00	\$134.00	\$3.00	\$3,216.00	\$4,020.00	2.29%
Southwestern	\$142.50	\$142.50	\$0.00	\$3,420.00	\$4,275.00	0.00%
Indian Hills	\$206.00	\$216.00	\$10.00	\$5,184.00	\$6,480.00	4.85%
Southeastern	\$140.00	\$147.00	\$7.00	\$3,528.00	\$4,410.00	5.00%
State Average	\$165.99	\$170.55	\$4.56	\$4,093.12	\$5,116.40	2.72%
Standard Deviation	\$34.00	\$35.09	\$2.91	\$842.25	\$1,052.81	1.71%

Source: 2011-2012 Academic Year, Iowa Community Colleges, Tuition and Fees Report, Issued September 2011; Electronic 2012-2013 tuition survey data submitted by Iowa community colleges and compiled by the Iowa Department of Education. Note: Indian Hills shown for three 12-week terms. 8 credits per term equals 12 per semester. * Iowa Valley number represents the average of the Ellsworth CC (\$176) and the Marshalltown CC (\$154) rates.

Table 15 - Recurring Fees for Full-Time Students: 2012-2013 Academic Year

Community College	Amount	Term	Purpose	Annual - 12 Credits per Term	Annual - 15 Credits per Term
Northeast Iowa	\$13.00	Sem Hr.	General	\$312.00	\$390.00
North Iowa Area	\$3.18	Sem Hr.	Student Activity	\$76.32	\$95.40
	\$11.75	Sem Hr.	Materials/Lab/Supply	\$282.00	\$352.50
	\$10.00	Sem Hr.	Technology	\$240.00	\$300.00
			\$598.32	\$747.90	
Iowa Lakes	\$0.75	Sem Hr.	Processing	\$18.00	\$22.50
	\$0.25	Sem Hr.	Noel Levitz LSA Fee	\$6.00	\$7.50
	\$2.25	Sem Hr.	Activity	\$54.00	\$67.50
	\$5.50	Sem Hr.	General	\$132.00	\$165.00
	\$8.00	Sem Hr.	Technology	\$192.00	\$240.00
	\$10.00	Semester	Activity (students registered for 12 or more hours)	\$20.00	\$20.00
			\$422.00	\$522.50	
Northwest Iowa	\$10.00	Sem Hr.	Student Fee	\$240.00	\$300.00
	\$10.00	Sem Hr.	Course Fee	\$240.00	\$300.00
	\$8.00	Sem Hr.	Technology Fee	\$192.00	\$240.00
			\$672.00	\$840.00	
Iowa Central	\$14.00	Sem Hr.	Student Fee	\$336.00	\$420.00
Iowa Valley	\$17.00	Sem Hr.	Materials & Technology Fee	\$408.00	\$510.00
	\$2.00	Sem Hr.	Facility Fee	\$48.00	\$60.00
	\$7.00	Sem Hr.	Student/Distance Learning/Facility Fee	\$168.00	\$210.00
			\$624.00	\$780.00	
Hawkeye	\$4.00	Sem Hr.	Computer user	\$96.00	\$120.00
	\$2.00	Sem Hr.	Activity	\$48.00	\$60.00
			\$144.00	\$180.00	
Eastern Iowa	None				
Kirkwood	None				
Des Moines Area	None				
Western Iowa Tech	\$9.00	Credit Hr.	Technology	\$216.00	\$270.00
	\$6.50	Credit Hr.	Matriculation	\$156.00	\$195.00
			\$372.00	\$465.00	
Iowa Western	\$13.00	Sem Hr.	Student Activity Fee	\$312.00	\$390.00
Southwestern	\$12.00	Sem Hr.	Service/Technology	\$288.00	\$360.00
Indian Hills	None				
Southeastern	None				

Source: 2011-2012 Academic Year, Iowa Community Colleges, Tuition and Fees Report, Issued September 2011; Electronic 2012-2013 tuition survey data submitted by Iowa community colleges and compiled by the Iowa Department of Education.

Note: This is not an all inclusive listing of fees charged by the individual community colleges. The fees listed above include all fees charged to each student. Other fees such as lab fees or special class fees may be charged by the individual community college.

Table 16 - Adjusted Source of Revenues, Constant 2011 Dollars: 1980-2011

Fiscal Year	Tuition & Fees	Local	State	Federal	Other Income	Total Revenue
1980	\$ 20,770,856	\$10,292,235	\$ 42,168,500	\$ 9,499,673	\$ 2,442,607	\$ 85,173,871
1981	\$ 25,378,916	\$10,996,524	\$ 45,926,991	\$11,186,726	\$ 2,530,891	\$ 96,020,048
1982	\$ 29,551,450	\$11,894,036	\$ 48,828,338	\$10,660,780	\$ 2,783,449	\$103,718,053
1983	\$ 32,964,482	\$12,555,326	\$ 54,943,365	\$ 7,920,067	\$ 4,069,473	\$112,452,713
1984	\$ 35,635,911	\$13,251,604	\$ 54,905,514	\$ 9,020,315	\$ 6,106,408	\$118,919,752
1985	\$ 39,081,844	\$13,509,424	\$ 57,304,653	\$ 7,763,792	\$ 5,606,917	\$123,266,630
1986	\$ 41,874,013	\$14,341,590	\$ 57,318,691	\$ 7,238,891	\$ 6,682,867	\$127,456,052
1987	\$ 44,234,418	\$15,238,260	\$ 59,364,009	\$ 7,842,465	\$ 7,743,795	\$134,422,947
1988	\$ 46,320,889	\$15,494,622	\$ 74,298,897	\$ 8,731,043	\$ 6,879,925	\$151,725,376
1989	\$ 52,939,398	\$14,842,017	\$ 81,145,557	\$ 8,444,365	\$ 8,574,540	\$165,945,877
1990	\$ 59,083,307	\$14,795,294	\$ 87,986,508	\$ 9,647,666	\$ 8,630,027	\$180,142,802
1991	\$ 64,611,612	\$14,628,725	\$ 99,007,776	\$10,013,803	\$ 7,374,254	\$195,636,170
1992	\$ 71,468,172	\$15,363,740	\$103,957,683	\$10,128,910	\$ 7,267,997	\$208,186,502
1993	\$ 80,328,838	\$14,809,399	\$105,999,720	\$ 9,619,520	\$ 7,856,403	\$218,613,880
1994	\$ 84,320,603	\$14,983,318	\$111,520,721	\$ 9,052,982	\$ 9,090,428	\$228,968,052
1995	\$ 88,787,614	\$15,411,635	\$115,470,717	\$ 9,724,727	\$11,074,989	\$240,469,682
1996	\$ 94,510,410	\$16,295,106	\$120,871,270	\$ 9,390,517	\$11,161,382	\$252,228,685
1997	\$101,810,818	\$16,021,489	\$126,006,271	\$ 8,695,009	\$12,851,532	\$265,385,119
1998	\$110,149,417	\$16,613,665	\$130,852,051	\$ 8,988,029	\$15,244,492	\$281,847,654
1999	\$115,529,785	\$17,468,287	\$135,366,156	\$ 9,504,535	\$18,594,675	\$296,463,438
2000	\$120,842,833	\$18,185,022	\$141,577,403	\$10,599,091	\$20,713,200	\$311,917,549
2001	\$126,492,784	\$18,974,313	\$147,577,403	\$11,019,583	\$20,255,115	\$324,319,198
2002	\$143,925,326	\$19,633,548	\$137,585,680	\$11,533,176	\$18,811,715	\$331,489,445
2003	\$157,901,666	\$20,212,798	\$138,585,680	\$12,217,820	\$20,250,870	\$349,168,834
2004	\$173,303,945	\$20,572,952	\$136,890,098	\$12,849,913	\$30,614,196	\$374,231,104
2005	\$192,008,125	\$19,973,009	\$139,779,246	\$12,396,138	\$25,574,079	\$389,730,597
2006	\$197,923,928	\$20,386,296	\$149,580,895	\$12,310,925	\$30,484,574	\$410,686,618
2007	\$207,459,968	\$21,433,089	\$159,579,244	\$11,948,729	\$36,272,537	\$436,693,567
2008	\$220,652,139	\$21,923,759	\$171,962,414	\$11,715,785	\$38,747,297	\$465,001,394
2009	\$237,273,711	\$23,145,956	\$180,316,478	\$11,937,650	\$25,527,767	\$487,156,624
2010	\$280,576,464	\$24,287,204	\$148,754,233	\$34,904,942	\$31,257,259	\$519,780,102
2011	\$308,633,060	\$25,406,419	\$158,754,232	\$14,478,452	\$31,507,835	\$538,779,998

Source: Data from 1980 through 2010 taken from the Iowa Community Colleges, Tuition and Fees Report issued September 2011 (AS-15E's, Fund I); Annual Report, Fiscal year 2011 (AS-15E). Table is adjusted for inflation using December values of the CPI-U.



COMMUNITY COLLEGES
BUREAU OF ADULT, CAREER, AND COMMUNITY COLLEGE EDUCATION
www.educateiowa.gov/ccpublications/