

2025 Condition of Education

Enrollment



Department of Education

CONTENTS

Enrollment	3
Enrollment Trends and Projections	3
K-12 Enrollment by District Size Category.....	6
Open Enrollment	7
Enrollment by Race and Ethnicity.....	9
Students Eligible for Free- or Reduced-Price Lunch.....	12
Special Education Enrollment	14
Enrollment of English Learners.....	15
Migrant Student Enrollment.....	19

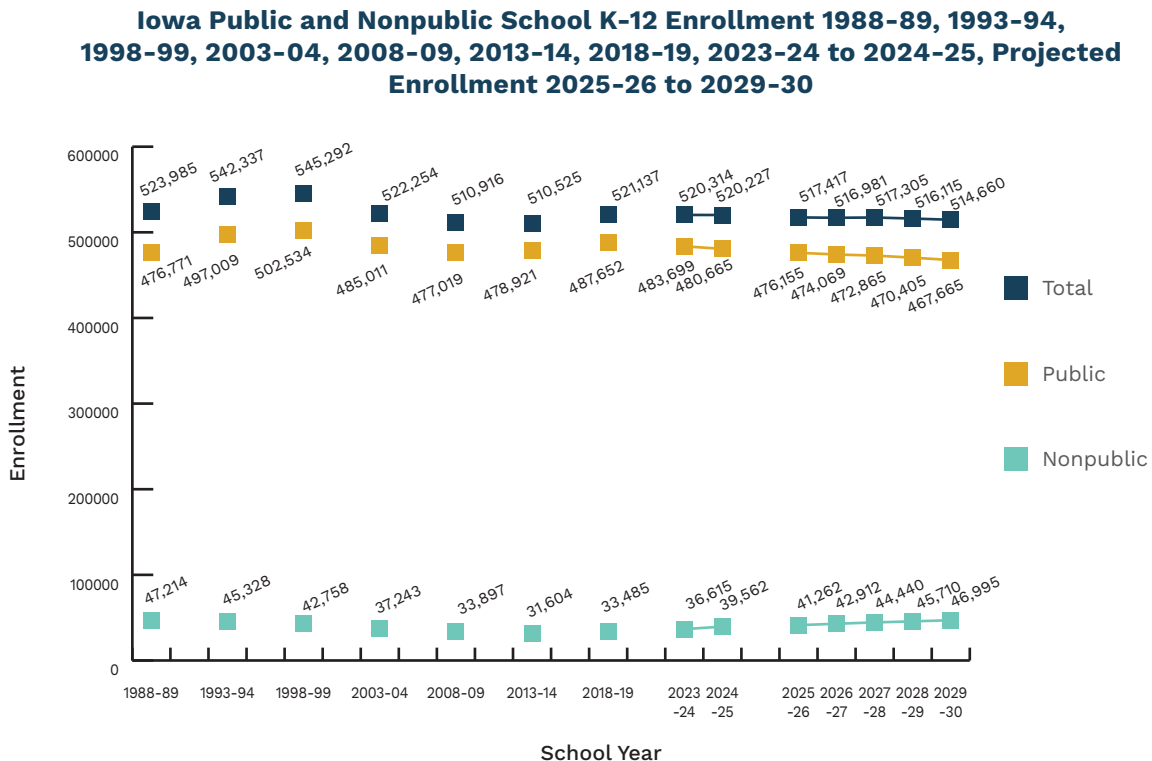
ENROLLMENT

This chapter presents public and nonpublic enrollment trends in Iowa, by school district size and area education agency (AEA). This includes data on student characteristics, such as race/ethnicity, English learners (EL), students eligible for free or reduced-price lunch, special education enrollment and migrant student enrollment. These data come from the Basic Educational Data Survey (BEDS), certified enrollment, Student Reporting in Iowa (SRI) and Iowa special education records.

Certified enrollment counts are used for the Iowa School Finance Formula calculation and include resident students, supplemental weightings for sharing programs, weighting for EL students, nonpublic school assistance and dual enrollments. Enrollment data by grade and race/ethnicity are reported by the district the student attends.

ENROLLMENT TRENDS AND PROJECTIONS

Combined public and nonpublic enrollment in 2024-25 decreased slightly from 2023-24. Long-term trends show a decline in enrollment from 1997-98 to 2011-12, followed by a steady increase from 2011-12 to 2019-20, with a subsequent decrease after the COVID-19 pandemic. Combined enrollment at public and nonpublic schools is projected to gradually decrease through 2029-30 (Figure 4-1) based on grade-level enrollment and retention patterns and Iowa's birth rate trends.



Source: Iowa Department of Education, Bureau of Performance and Analytics.

Table 4-1: Iowa Public School K-12 Certified Enrollment 2023-24 to 2024-25 and Projected Certified Enrollment 2025-26 to 2029-30 by Grade

Grade	Enrollment		Projected Enrollment				
	2023-24	2024-25	2025-26	2026-27	2027-28	2028-29	2029-30
K	36,764	36,144	35,279	35,429	35,444	34,962	34,946
1	34,826	34,012	33,427	32,790	32,929	32,862	32,333
2	35,801	34,923	34,154	33,734	33,091	33,149	32,999
3	35,681	36,018	35,151	34,549	34,124	33,391	33,366
4	36,150	35,964	36,255	35,560	34,951	34,435	33,611
5	35,954	36,365	36,222	36,698	35,995	35,290	34,683
6	35,683	36,112	36,654	36,693	37,175	36,372	35,570
7	36,075	36,037	36,526	37,260	37,299	37,695	36,789
8	37,099	36,328	36,235	36,911	37,652	37,598	37,903
9	39,293	38,736	37,807	37,899	38,606	39,283	39,129
10	40,013	38,921	38,414	37,680	37,772	38,380	38,956
11	39,001	39,102	38,074	37,765	37,044	37,042	37,545
12	38,637	39,221	39,385	38,542	38,229	37,405	37,310
PKIEP	2,723	2,783	2,571	2,560	2,553	2,540	2,525
State	483,699	480,665	476,155	474,069	472,865	470,405	467,665

Source: Iowa Department of Education, Bureau of Performance and Analytics.

Note: PKIEP: Prekindergarten individualized education programs.

Figures may not total due to rounding.

Table 4-2: Iowa Nonpublic School K-12 Enrollment 2023-24 to 2024-25 and Projected Enrollment 2025-26 to 2029-30 by Grade

	Enrollment		Projected Enrollment				
Grade	2023-24	2024-25	2025-26	2026-27	2027-28	2028-29	2029-30
K	3,843	4,224	3,904	3,901	3,903	3,860	3,867
1	3,290	3,825	4,111	3,800	3,797	3,798	3,756
2	3,366	3,507	3,914	4,206	3,888	3,885	3,887
3	3,350	3,596	3,674	4,100	4,406	4,073	4,070
4	3,216	3,528	3,691	3,771	4,208	4,522	4,180
5	3,160	3,366	3,614	3,781	3,863	4,311	4,633
6	3,092	3,287	3,374	3,623	3,790	3,872	4,321
7	2,675	3,036	3,109	3,192	3,427	3,585	3,662
8	2,657	2,751	3,135	3,211	3,296	3,539	3,702
9	2,101	2,304	2,253	2,568	2,630	2,700	2,899
10	2,014	2,128	2,334	2,282	2,601	2,664	2,734
11	2,034	2,024	2,147	2,354	2,303	2,624	2,687
12	1,817	1,986	2,001	2,123	2,328	2,277	2,595
Total	36,615	39,562	41,262	42,912	44,440	45,710	46,995

Source: Iowa Department of Education, Bureau of Performance and Analytics.

K-12 ENROLLMENT BY DISTRICT SIZE CATEGORY

In 2000-01, more than two-thirds (69.0%) of Iowa public school districts had fewer than 1,000 students enrolled, serving 28.2% of K-12 students. As of 2024-25, just under two-thirds (65.3%) of the districts had fewer than 1,000 students and served 23.3% of K-12 public school students (Table 4-3).

**Table 4-3: Iowa Public School Districts and K-12 Students by Enrollment Size
2000-01, 2023-24 and 2024-25**

Enrollment Category	2000-01				2023-24				2024-25			
	Districts		Students		Districts		Students		Districts		Students	
	N	%	N	%	N	%	N	%	N	%	N	%
Under 300	38	10.2	8,176	1.7	37	11.3	8,120	1.7	40	12.2	8,871	1.8
300-599	116	31.0	52,162	10.6	106	32.4	48,798	10.1	103	31.3	47,176	9.8
600-999	104	27.8	78,916	16.0	71	21.7	55,360	11.4	72	21.9	55,824	11.6
1,000-2,499	83	22.2	126,118	25.5	74	22.6	108,317	22.4	73	22.2	106,200	22.1
2,500-7,499	24	6.4	96,410	19.5	25	7.6	101,558	21.0	26	7.9	108,607	22.6
7,500+	9	2.4	132,509	26.8	12	3.7	161,547	33.4	11	3.3	153,986	32.0
Independent Charter Schools	0	0.0	0	0.0	2	0.6	0	0.0	4	1.2	0	0.0
State	374	100.0	494,291	100.0	327	100.0	483,699	100.0	329	100.0	480,665	100.0

Source: Iowa Department of Education, Bureau of Performance and Analytics, Certified Enrollment.

Note: Figures may not total due to rounding.

OPEN ENROLLMENT

The Open Enrollment Act (Iowa Code §282.18) of 1989-90 states, “It is the goal of the general assembly to permit a wide range of educational choices for children enrolled in schools in this state and to maximize ability to use those choices..., [To] maximize parental choice and access to educational opportunities which are not available to children because of where they live.” The percentage of students taking advantage of the Open Enrollment Act in 2024-25 increased from the previous year, with 9.0% of students open enrolling (Table 4-4). The largest (7,500+) and smallest (under 300) enrollment categories in 2023-24 and 2024-25 had more students open enrolling out than open enrolling in. In 2024-25, the 300-599 enrollment category experienced the largest net gain of students from the open enrollment legislation (Table 4-5).

Table 4-4: Number and Percentage of Iowa Public School K-12 Open Enrolled Out Students 1990-91, 1995-96, 2000-01, 2005-06, 2010-11, 2015-16, 2020-21 to 2024-25

School Year	Certified Enrollment	# Open Enrolled Out	% Open Enrolled Out
1990-91	483,399	2,757	0.6
1995-96	504,505	12,502	2.5
2000-01	494,291	18,554	3.8
2005-06	483,105	23,155	4.8
2010-11	473,493	25,831	5.5
2015-16	483,451	30,463	6.3
2020-21	484,159	35,227	7.3
2021-22	485,630	36,412	7.5
2022-23	486,476	38,965	8.0
2023-24	483,699	41,501	8.6
2024-25	480,665	43,188	9.0

Source: Iowa Department of Education, Bureau of Performance and Analytics, Certified Enrollment and Student Reporting in Iowa.

Table 4-5: Open Enrollment in Iowa Public Schools by Enrollment Size, 2000-01, 2023-24 and 2024-25

		Enrollment Category							
		Under 300	300-599	600-999	1,000-2,499	2,500-7,499	7,500+	Independent Charter Schools	State
2000-01	Total Number of Districts	38	116	104	83	24	9	0	374
	Number of Students	8,176	52,162	78,916	126,118	96,410	132,509	0	494,291
	Number of Students Open in	398.0	3,366.6	4,177.9	5,295.4	3,571.6	1,625.4	0.0	18,434.9
	Number of Students Open Out	1,036.2	3,499.3	3,742.3	3,955.6	3,141.0	3,179.5	0.0	18,553.9
	Net Gains/Losses	-638.2	-132.7	435.6	1,339.8	430.6	-1,554.1	0.0	
	Number of Districts with Gains	6	47	49	53	13	0	0	168
	Number of Districts with Losses	30	65	54	30	11	9	0	199
	Number of Districts with No Gain/Loss	2	4	1	0	0	0	0	7
2023-24	Total Number of Districts	37	106	71	74	25	12	2	327
	Number of Students	8,119.5	48,797.8	55,359.8	108,316.9	101,558.0	161,546.7	0.0	483,698.7
	Number of Students Open in	1,407.1	10,036.8	7,479.9	10,271.4	7,912.7	4,147.2	246.0	41,501.1
	Number of Students Open Out	2,207.4	6,956.9	5,701.6	8,557.4	7,326.8	10,751.0	0.0	41,501.1
	Net Gains/Losses	-800.3	3,079.9	1,778.3	1,714.0	585.9	-6,603.8	246.0	0.0
	Number of Districts with Gains	8	48	41	40	15	2	2	156
	Number of Districts with Losses	29	57	30	34	10	10	0	170
	Number of Districts with No Gain/Loss	0	1	0	0	0	0	0	1
2024-25	Total Number of Districts	40	103	72	73	26	11	4	329
	Number of Students	8,871.4	47,176.3	55,824.0	106,200.1	108,607.4	153,986.2	0.0	480,665.4
	Number of Students Open in	1,571.0	10,171.4	8,004.3	10,534.5	8,781.8	3,525.9	599.0	43,187.9
	Number of Students Open Out	2,345.0	6,915.3	5,988.1	8,858.3	8,270.9	10,810.3	0.0	43,187.9
	Net Gains/Losses	-774.0	3,256.1	2,016.2	1,676.2	510.9	-7,284.4	599.0	0.0
	Number of Districts with Gains	9	51	37	37	15	2	4	155
	Number of Districts with Losses	31	52	35	36	11	9	0	174
	Number of Districts with No Gain/Loss	0	0	0	0	0	0	0	0

Source: Iowa Department of Education, Bureau of Performance and Analytics, Certified Enrollment and Student Reporting in Iowa.

Note: Figures may not total due to rounding.

ENROLLMENT BY RACE AND ETHNICITY

Students of color, including students with a reported ethnicity of Hispanic/Latino and/or reported race of American Indian or Alaska Native, Asian, Black or African American, Native Hawaiian or Other Pacific Islander, or Two or More Races, represent 29.6% of K-12 students in public schools and 20.5% in nonpublic schools in 2024-25 (Tables 4-6, 4-7 and Figure 4-2). The largest enrollment category (7,500+) had the highest percentage of students of color, at 48.7%, while the two smallest enrollment categories (under 300 and 300-599) had the lowest percentages, each slightly over 10% (Table 4-8).

Table 4-6: Iowa Public School K-12 Enrollment by Race/Ethnicity 2000-01, 2023-24 and 2024-25

Race/Ethnicity	2000-01		2023-24		2024-25	
	Number	Percent	Number	Percent	Number	Percent
All Students of Color	46,250	9.7	136,584	28.5	140,965	29.6
American Indian or Alaska Native	2,447	0.5	1,512	0.3	1,506	0.3
Asian	8,274	1.7	11,921	2.5	11,907	2.5
Black or African American	18,510	3.9	33,501	7.0	34,739	7.3
Hispanic/Latino	17,019	3.6	62,415	13.0	64,924	13.7
Native Hawaiian or Other Pacific Islander	-	-	3,232	0.7	3,475	0.7
Two or More Races	-	-	24,003	5.0	24,414	5.1
White	430,677	90.3	342,108	71.5	334,494	70.4
Total	476,927	100.0	478,692	100.0	475,459	100.0

Source: Iowa Department of Education, Bureau of Performance and Analytics, Basic Educational Data Survey and Student Reporting in Iowa.

Note: Student Reporting in Iowa added 'Native Hawaiian or Other Pacific Islander' and 'Two or More Races' to the system beginning in 2009-10.

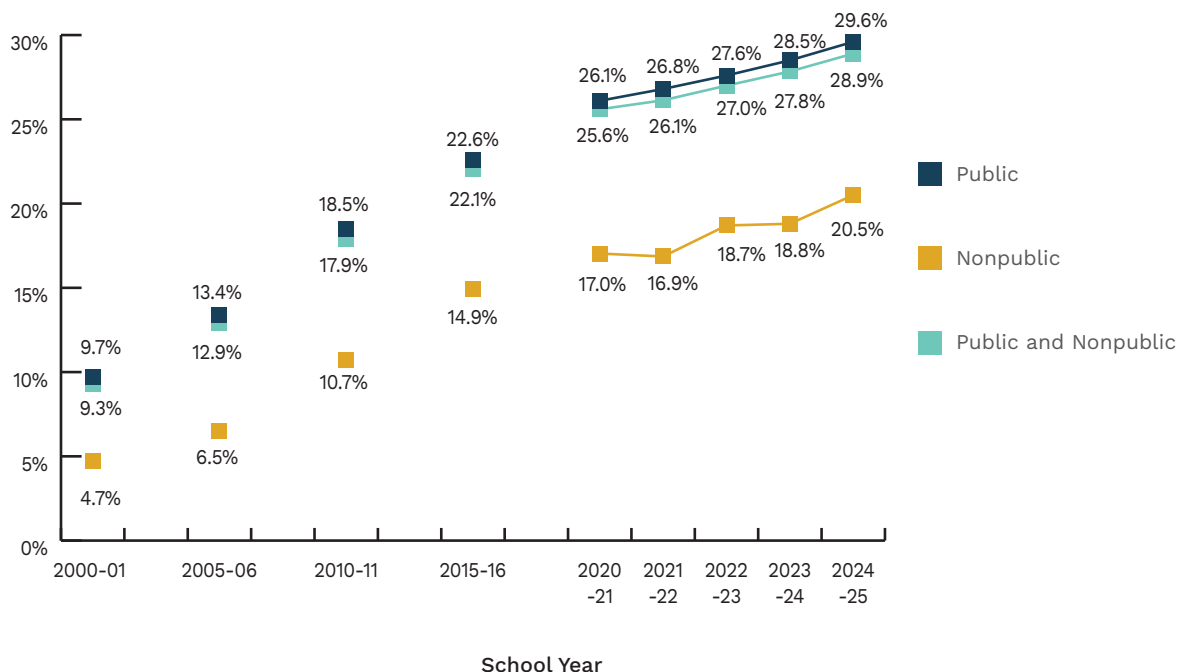
Table 4-7: Iowa's Nonpublic K-12 Enrollment by Race/Ethnicity 2000-01, 2023-24 and 2024-25

Race/Ethnicity	2000-01		2023-24		2024-25	
	Number	Percent	Number	Percent	Number	Percent
All Students of Color	1,946	4.7	6,871	18.8	8,126	20.5
American Indian or Alaska Native	70	0.2	72	0.2	58	0.1
Asian	563	1.4	971	2.7	1,105	2.8
Black or African American	492	1.2	1,299	3.5	1,722	4.4
Hispanic/Latino	821	2.0	3,169	8.7	3,390	8.6
Native Hawaiian or Other Pacific Islander	-	-	106	0.3	108	0.3
Two or More Races	-	-	1,254	3.4	1,743	4.4
White	39,118	95.3	29,744	81.2	31,436	79.5
Total	41,064	100	36,615	100	39,562	100

Source: Iowa Department of Education, Bureau of Performance and Analytics, Basic Educational Data Survey and Student Reporting in Iowa.

Note: Student Reporting in Iowa added 'Native Hawaiian or Other Pacific Islander' and 'Two or More Races' to the system beginning in 2009-10.

Figure 4-2: Iowa Public and Nonpublic School Students of Color Enrollment as a Percentage of Total K-12 Enrollment 2000-01, 2005-06, 2010-11, 2015-16, 2020-21 to 2024-25



Source: Iowa Department of Education, Bureau of Performance and Analytics, Basic Educational Data Survey and Student Reporting in Iowa.

**Table 4-8: Iowa Public School Students of Color Percent Enrollment by Enrollment Category
2000-01, 2023-24 and 2024-25**

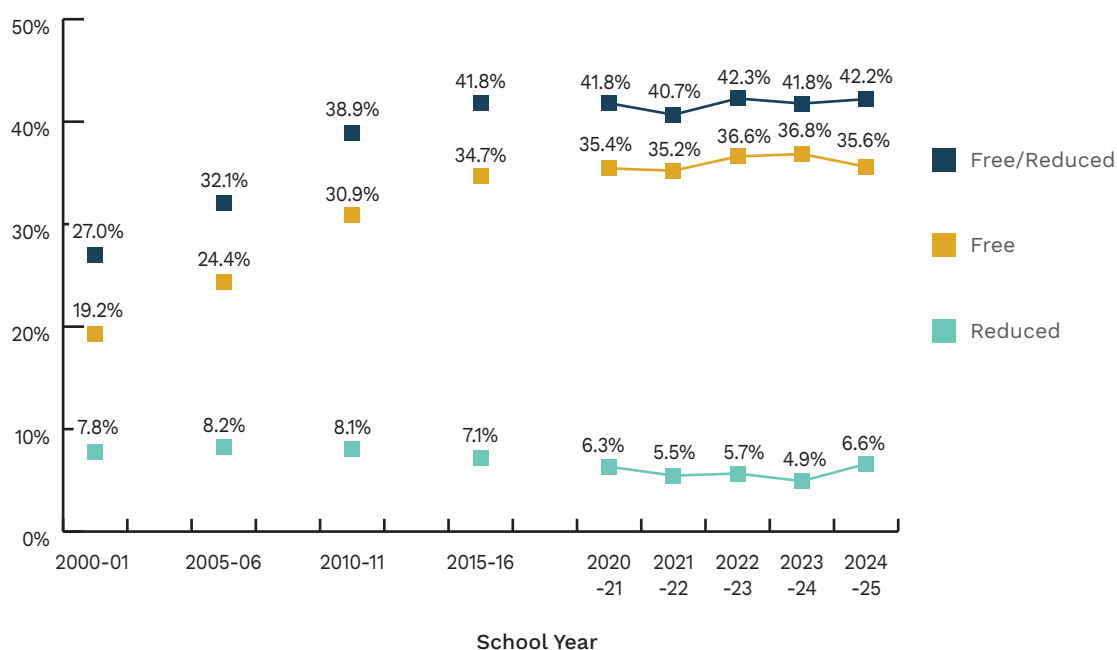
Enrollment Category	2000-01	2023-24	2024-25
Under 300	1.5	10.3	10.7
300-599	2.4	10.2	10.5
600-999	2.6	13.5	14.4
1,000-2,499	5.9	18.8	19.6
2,500-7,499	9.0	31.1	32.0
7,500+	21.7	46.2	48.7
Independent Charter Schools	-	35.8	46.4
State	9.7	28.5	29.6

Source: Iowa Department of Education, Bureau of Performance and Analytics, Certified Enrollment and Student Reporting in Iowa.

STUDENTS ELIGIBLE FOR FREE OR REDUCED-PRICE LUNCH

According to the National School Lunch Program, children from families with incomes at or below 130% of the federal poverty level (FPL) are eligible for free lunch, and children from families with incomes between 130% and 185% of the FPL are eligible for reduced-price lunch. In 2024-25, the percent of students eligible for free or reduced-price lunch increased slightly to 42.2%, up from 41.8% in 2023-24. (Figure 4-3). Districts in the largest (7,500+) and smallest (Under 300) enrollment categories had the highest percentage of students eligible for free or reduced-price lunch (Table 4-9). Among racial/ethnic groups, Native Hawaiian or Other Pacific Islander and Black or African American students had the highest free or reduced-price lunch eligibility, at 79.7% and 79.6%, respectively (Table 4-10).

Figure 4-3: Percent of Iowa Public School K-12 Students Eligible for Free or Reduced-Price Lunch 2000-01, 2005-06, 2010-11, 2015-16, 2020-21 to 2024-25



Source: Iowa Department of Education, Bureau of Performance and Analytics, Student Reporting in Iowa.

Note: The Community Eligibility Provision (CEP) started in 2015-16.

Table 4-9: Iowa Public School K-12 Students Eligible for Free or Reduced-Price Lunch by Enrollment Category 2000-01, 2023-24 and 2024-25

	2000-01			2023-24			2024-25		
Enrollment Category	K-12 (BEDS) Enrollment	# Free/ Reduced Eligible	% Free/ Reduced Eligible	K-12 (BEDS) Enrollment	# Free/ Reduced Eligible	% Free/ Reduced Eligible	K-12 (BEDS) Enrollment	# Free/ Reduced Eligible	% Free/ Reduced Eligible
Under 300	6,711	2,256	33.6	6,321	3,131	49.5	7,106	3,349	47.1
300-599	50,933	13,511	26.5	51,704	19,924	38.5	50,214	18,446	36.7
600-999	77,327	17,966	23.2	56,794	20,328	35.8	57,556	21,164	36.8
1,000-2,499	122,830	29,876	24.3	108,840	42,381	38.9	106,520	40,231	37.8
2,500-7,499	93,322	21,433	23.0	101,362	39,068	38.5	108,276	39,211	36.2
7,500+	125,804	43,874	34.9	153,425	75,073	48.9	145,188	77,959	53.7
Independent Charter Schools	-	-	-	246	49	19.9	599	290	48.4
State	476,927	128,916	27.0	478,692	199,954	41.8	475,459	200,650	42.2

Source: Iowa Department of Education, Bureau of Performance and Analytics, Basic Educational Data Survey and Student Reporting in Iowa.

Table 4-10: Iowa Public School K-12 Students Eligible for Free or Reduced-Price Lunch by Race/Ethnicity 2010-11, 2023-24 and 2024-25

	2010-11			2023-24			2024-25		
Race/ Ethnicity	K-12 (BEDS) Enrollment	# Free/ Reduced Eligible	% Free/ Reduced Eligible	K-12 (BEDS) Enrollment	# Free/ Reduced Eligible	% Free/ Reduced Eligible	K-12 (BEDS) Enrollment	# Free/ Reduced Eligible	% Free/ Reduced Eligible
American Indian or Alaska Native	2,279	1,402	61.5	1,512	1,076	71.2	1,506	1,033	68.6
Asian	9,486	3,543	37.3	11,921	5,187	43.5	11,907	5,508	46.3
Black or African American	24,066	19,247	80.0	33,501	26,500	79.1	34,739	27,646	79.6
Hispanic/ Latino	39,678	30,311	76.4	62,415	42,736	68.5	64,924	45,687	70.4
Native Hawaiian or Other Pacific Islander	660	431	65.3	3,232	2,576	79.7	3,475	2,771	79.7
Two or More Races	10,343	6,174	59.7	24,003	13,566	56.5	24,414	13,985	57.3
White	382,177	121,174	31.7	342,108	108,313	31.7	334,494	104,020	31.1
Total	468,689	182,282	38.9	478,692	199,954	41.8	475,459	200,650	42.2

Source: Iowa Department of Education, Bureau of Performance and Analytics, Student Reporting in Iowa.

SPECIAL EDUCATION ENROLLMENT

Children requiring special education are “Persons under twenty-one years of age, including children under five years of age, who have a disability in obtaining an education because of a head injury, autism, behavior disorder, or physical, mental, communication, or learning disability, as defined by the rules of the department of education” (Iowa Code §256B.2). Special education weighted enrollment reflects additional funding school districts receive weighted by the level of service model provided to the student. The special education students in Iowa public schools accounted for 13.1% of the total certified enrollment in 2024-25. This continues an upward trend since 2015-16, when the percentage was 11.6 (Table 4-11).

Table 4-11: Iowa Public School Special Education Weighted Enrollment 2000-01, 2005-06, 2010-11, 2015-16, 2020-21 to 2024-25

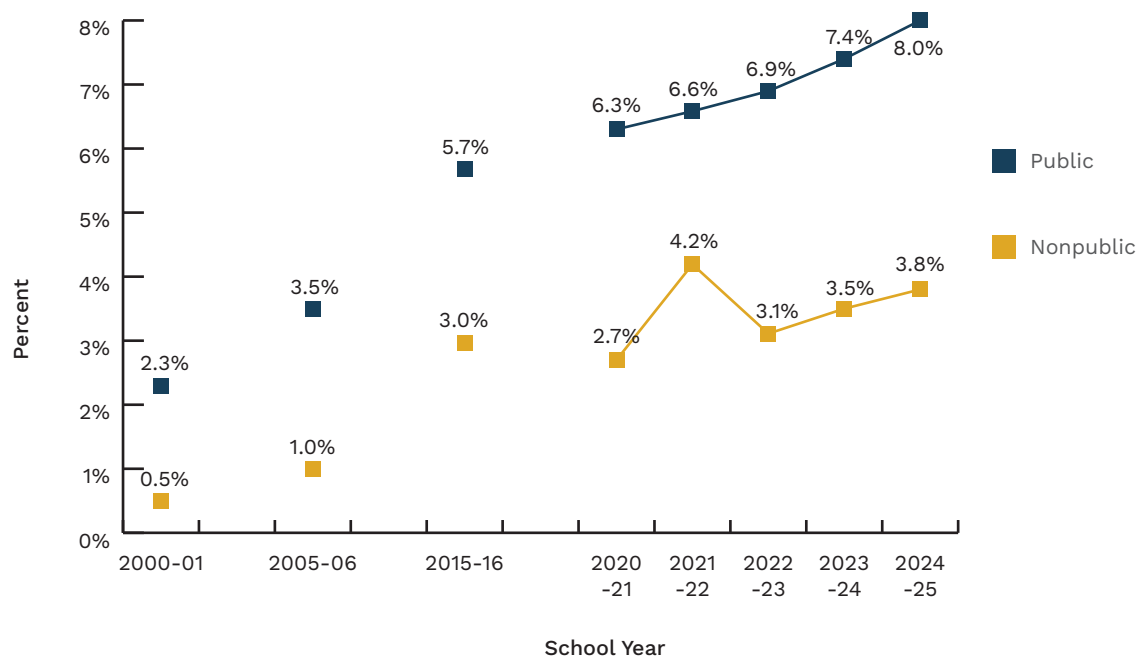
School Year	Special Education Weighted Enrollment	Certified Enrollment	Special Education Enrollment Percent
2000-01	63,392	494,291	12.8
2005-06	64,350	483,105	13.3
2010-11	60,223	473,493	12.7
2015-16	56,039	483,451	11.6
2020-21	60,342	484,159	12.5
2021-22	61,193	485,630	12.6
2022-23	62,228	486,476	12.8
2023-24	62,709	483,699	13.0
2024-25	63,056	480,665	13.1

Source: Iowa Department of Education, Bureau of Performance and Analytics, Certified Enrollment; Bureau of Student and Family Special Education Services, Last Friday of October Special Education Weighted Enrollment Files.

ENROLLMENT OF ENGLISH LEARNERS

K-12 (EL) students accounted for 8.0% of public school and 3.8% of nonpublic school enrollment in 2024-25 (Figure 4-4). The majority of EL students spoke Spanish as their primary language (62.0% in 2024-25), although a wide variety of languages are represented (Table 4-12). Larger school districts had more weighted EL students than smaller districts in all years presented in Table 4-13 (2000-01, 2023-24 and 2024-25). Through the 2020-21 school year, an EL student was eligible for a 0.22 weighted funding for a period not exceeding five years (Iowa Code §280.4). With the passage of House File 605 in the 2021 legislative session, starting with the 2021-22 school year, EL weighted funding differs based on the student's level of English language proficiency. "Intensive" students (those who score a level 1 or "emerging" on the ELPA21 assessment) are eligible for a 0.26 weighted funding, while "intermediate" students (those who score a level 2 or "progressing" on the ELPA21 assessment) are eligible for a 0.21 weighted funding.

Figure 4-4: Percent of Iowa Public and Nonpublic School K-12 Students who are English Learners 2000-01, 2005-06, 2015-16, 2020-21 to 2024-25



Source: Iowa Department of Education, Bureau of Performance and Analytics, Basic Educational Data Survey and Student Reporting in Iowa.

Table 4-12: Iowa's Public and Nonpublic K-12 English Learners' Primary Language 2000-01, 2023-24 and 2024-25

Language	2000-01	2023-24	2024-25
Spanish; Castilian	7,014	22,685	24,536
Swahili		1,528	1,892
Arabic	81	1,167	1,350
French		1,066	1,127
Karen languages		828	803
Marshallese		763	782
Pohnpeian		692	731
Chuukese		628	659
Burmese		544	519
Vietnamese	766	480	479
Tigrinya		344	419
Nilo-Saharan languages		369	357
Bosnian	363	382	340
Haitian; Haitian Creole		135	334
Creoles and pidgins, English based		284	305
Somali		247	288
Kinyarwanda		234	265
Nepali		272	241
Chinese	80	223	234
Pushto; Pashto		158	203
Portuguese		157	197
Persian		128	179
Ukrainian		114	173
Dinka		175	163
Indo-European languages		120	145
Lao	409	173	133
Russian	65	127	120
Telugu		136	118
German	153	103	114

Table 4-12: Iowa's Public and Nonpublic K-12 English Learners' Primary Language 2000-01, 2023-24 and 2024-25 | Continued

Language	2000-01	2023-24	2024-25
Oromo		95	113
Amharic		93	106
Rundi		133	106
Creoles and pidgins, French-based			104
Hindi		106	96
Lingala		79	93
Mayan languages		79	88
Urdu		61	86
Gujarati		62	83
Ewe		76	77
Tamil		82	66
Hmong; Mong		68	60
Sino-Tibetan languages		60	57
Korean	76		
Kru languages		56	
Other	2,257	1,142	1,243
Total	11,264	36,454	39,584

Source: Iowa Department of Education, Bureau of Performance and Analytics, Basic Educational Data Survey and Student Reporting in Iowa.

Note: Languages with fewer than 50 students are included in Other.

**Table 4-13: Iowa Public School K-12 Weighted English Learners by Enrollment Size
2000-01, 2023-24 and 2024-25**

	2000-01		2023-24		2024-25	
Enrollment Category	K-12 Enrollment	# Weighted EL	K-12 Enrollment	# Weighted EL	K-12 Enrollment	# Weighted EL
Under 300	8,176	23	8,120	101	8,871	113
300-599	52,162	237	48,798	544	47,176	598
600-999	78,916	530	55,360	1,664	55,824	1,855
1,000-2,499	126,118	1,848	108,317	4,091	106,200	4,656
2,500-7,499	96,410	1,348	101,558	5,682	108,607	6,411
7,500+	132,509	4,165	161,547	14,793	153,986	16,324
Independent Charter Schools	-	-	0	0	0	0
State	494,291	8,151	483,699	26,875	480,665	29,957

Source: Iowa Department of Education, Bureau of Performance and Analytics, Certified Enrollment and Student Reporting in Iowa.
Note: Figures may not total due to rounding.

MIGRANT STUDENT ENROLLMENT

The U.S. Department of Education defines a “migratory child” as a child who is (or whose parent or spouse is) a migratory agricultural worker or migratory fisher. A migratory agricultural worker or migratory fisher is one who has moved from one school district to another in the preceding 36 months to obtain temporary or seasonal employment in agricultural or fishing work. The Iowa Department of Education collects data on migrant students through a direct certification system. Table 4-14 displays the number and percentage of migrant students from the 2015-16 to 2024-25 school years.

Table 4-14: Iowa Public School K-12 Migrant Enrollment, 2015-16 to 2024-25

School Year	Number of Migrant Students	K-12 Enrollment	Percent of Migrant Students
2015-16	1,153	488,818	0.24
2016-17	1,423	489,940	0.29
2017-18	1,719	490,669	0.35
2018-19	1,791	492,010	0.36
2019-20	1,886	492,518	0.38
2020-21	1,927	487,185	0.40
2021-22	2,284	489,939	0.47
2022-23	2,508	490,205	0.51
2023-24	2,761	488,321	0.57
2024-25	2,647	483,467	0.55

Source: Iowa Department of Education, Bureau of Performance and Analytics, Student Reporting in Iowa and Direct Certification.

Note: K-12 migrant counts are from migrant direct certification data from October 1 to September 30 of the following year. K-12 enrollments are the unduplicated counts from Student Reporting In Iowa during the fall, winter and spring collections.



400 E. 14th Street
Des Moines, IA 50319-0146
Phone: 515-281-8260
www.educate.iowa.gov