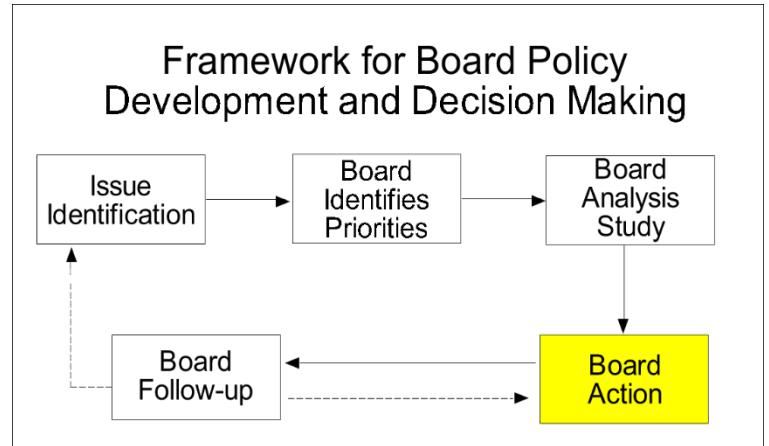


Iowa State Board of Education

Executive Summary

March 20, 2025



Agenda Item: Prairie Lakes Area Education Agency (AEA) Budget Review

State Board Priority: All

State Board Role/Authority: Iowa Code 273.3(12) requires the State Board to review the proposed budget of each area education agency (AEA) and either grant approval or return the budget without approval with comments of the State Board included. An unapproved budget shall be resubmitted to the State Board for final approval.

Presenter(s): Kassandra Cline, Chief
Bureau of School Business Operations

Dr. Dan Mart, Chief Administrator
Prairie Lakes AEA

Michelle Dowd, Chief Financial Officer
Prairie Lakes AEA

Attachment(s): One

Recommendation: It is recommended that the State Board approve the Prairie Lakes AEA budget as presented.

Background: Iowa Code 273.3(12) requires the State Board review the proposed budget of each AEA and either grant approval or return the budget without approval with comments by May 1. An unapproved budget shall be resubmitted to the State Board for final approval not later than May 15.



FY26
Prairie Lakes AEA
Budget Request & Report

500 NE 6th Street, Pocahontas, IA 50574 (866)-540-3858 www.plaea.org

FY26 Prairie Lakes AEA Budget Request & Report

Submitted by:

Dr. Dan Mart, Prairie Lakes AEA Chief Administrator

Michelle Dowd, Chief Financial Officer

Due: February 28, 2025

Table of Contents

Executive Summary.....	1
AEA Overview.....	2
Served.....	2
Districts.....	2
Students.....	2
Teachers.....	2
Others Served.....	2
Programs.....	2
Location.....	2
Capital Assets.....	2
Staff.....	3
Organizational Chart.....	3
BEDS Position Codes.....	3
FY25 to FY26 Staff Changes.....	3
Special Education Support Services Program.....	3
Educational Services Program.....	3
Media Services Program.....	4
Administrative Expenditures.....	4
Administrative Staff by FTE.....	4
Total Administrative Expenditures: FY24 Actual, FY25 Re-Estimated, and FY26 Proposed.....	5
Total Administrative Expenditures: Reduction.....	7
Services.....	7
Centralized Services.....	7
Centers of Excellence.....	7
Fiscal Detail.....	7
General Fund Balance: FY24 Actual, FY25 Re-Estimated, and FY26 Proposed.....	7
Three-Year Comparison for Budgeted Funds: FY24 Actual, FY25 Re-Estimated, and FY26 Proposed.....	8

Executive Summary

[Insert a high-level overview of the information contained in the report.]

This report outlines the financial and operational overview of Prairie Lakes Area Education Agency (AEA) for the fiscal years FY24 to FY26, providing insight into the services, expenditures, staff and various operational aspects of the organization.

Key highlights include a detailed breakdown of the AEA's served districts, students, teachers and other stakeholders, as well as a review of capital assets, staffing changes and administrative expenditures. The report also includes comparisons of budgeted funds over three years and projections for FY26, with an emphasis on administrative cost reductions and service offerings.

AEA Overview

Information relating to those served by the AEA, programs offered, location details, and a general description of capital assets are provided below.

Served

[Enter a summary description of the different groups (e.g., districts, students, teachers, and others) served by the AEA.]

Prairie Lakes AEA partners with public and accredited non-public schools across fourteen counties to provide comprehensive educational programs and direct services for over 28,000 students from birth to age 21. These services include evaluations, assessments, and therapies for both general and special education, as well as Early ACCESS for early intervention in infants and toddlers. Teachers benefit from specialized professional development, consultation, and coaching, while district administrators, superintendents, curriculum directors, and other education professionals receive tailored support through structured learning, implementation, and sustainability phases. This integrated approach ensures that all stakeholders are equipped with the tools and guidance necessary to enhance educational outcomes.

Districts

[Enter information about the districts served by the AEA. Identify any districts served that are located outside the AEA. Also identify any districts that are not served by the AEA but that are located within the AEA.]

Public School Districts (32)

Albert City-Truesdale	Graettinger-Terril	Schaller-Crestland
Algona	Harris-Lake Park	Sioux Central
Alta-Aurelia	Humboldt	Southeast Valley
Clarion-Goldfield-Dows	Laurens-Marathon	Spencer
Clay Central-Everly	Manson NW Webster	Spirit Lake
Eagle Grove	Newell-Fonda	Storm Lake
East Sac County	North Kossuth	Stratford
Emmetsburg	North Union	Twin Rivers
Estherville Lincoln Central	Okoboji	Webster City
Fort Dodge	Pocahontas Area	West Bend Mallard
Gilmore City-Bradgate	Ruthven-Ayrshire	

Accredited Non-public Schools (13)

Bishop Garrigan	Emmetsburg Catholic	Pocahontas Catholic
Community Christian	Iowa Great Lakes Lutheran	Sacred Heart School

Seton Grade School
St. Edmond Catholic
St. Mary's - Humboldt
St. Paul Lutheran

St. Thomas Aquinas
St. Mary's Elementary –
Storm Lake

St. Mary's High School –
Storm Lake

Districts Not Served Inside of the AEA (Starting 7/1/25) (4)

Greene County, Paton-Churdan, South Central Calhoun and South Hamilton

Students

[Enter information about the students who are served by the AEA.]

Prairie Lakes AEA works in partnership with public and accredited non-public schools to provide educational services, programs and resources for improving the learning outcomes and well-being of all children and youth in central Iowa. Prairie Lakes AEA staff members serve 28,316 children from birth to age 21, families, educators and communities.

Prairie Lakes AEA serves children and students from birth to 21, in general education and special education. Some services are evaluation and assessment, and some are direct services (e.g., occupational therapy, physical therapy, speech-language services).

Early ACCESS is Iowa's early intervention system (IDEA Part C) for infants and toddlers under 3 years old who are not developing as expected or who have a medical condition that can delay typical development. Families and Early ACCESS staff work together to identify, coordinate and provide needed services and resources that help families assist their infants and toddlers in their growth and development.

Early ACCESS serves children from birth to age 3 and their families who are referred to the AEA for services. Prairie Lakes AEA audiologists and audiometrists provide hearing screenings for infants, young children and K-2nd grade and 5th grade students in schools.

Teachers

[Enter information about the teachers who are served by the AEA.]

Prairie Lakes AEA serves approximately 2,583 Teachers & Administrators.

Special education teachers receive varying levels of support from building-based AEA core team staff (e.g., school social workers, school psychologists and special education consultants). AEA special education staff design, deliver and support professional learning on a variety of special education topics.

In Educational Services and Media Services, teachers may access AEA content experts to support teaching and learning in classrooms. AEA content experts design, deliver and support professional learning for teachers who engage in professional learning offerings from the AEA. Districts have the option to purchase AEA time and services.

From specialized professional learning to personalized consultation and coaching, AEAs ensure that districts receive the tailored support they need to meet their diverse needs.

Learning Support

In the learning phase, services focus on equipping educators with the knowledge, skills and strategies necessary to enhance their teaching practices and improve student outcomes.

Implementation Support

In the implementation phase, services focus on putting educational plans and strategies into action.

Sustainability Support

In the sustainability phase, services aim to maintain and build upon the progress achieved during implementation.

Others Served

[Enter information about others who are served by the AEA.]

Administrators	Special Education Directors
Curriculum Directors	Substitute Teachers
Paraeducators	Superintendents

Programs

[Highlight the general programs offered by the AEA as well as the programs offered that differentiate this AEA from others.]

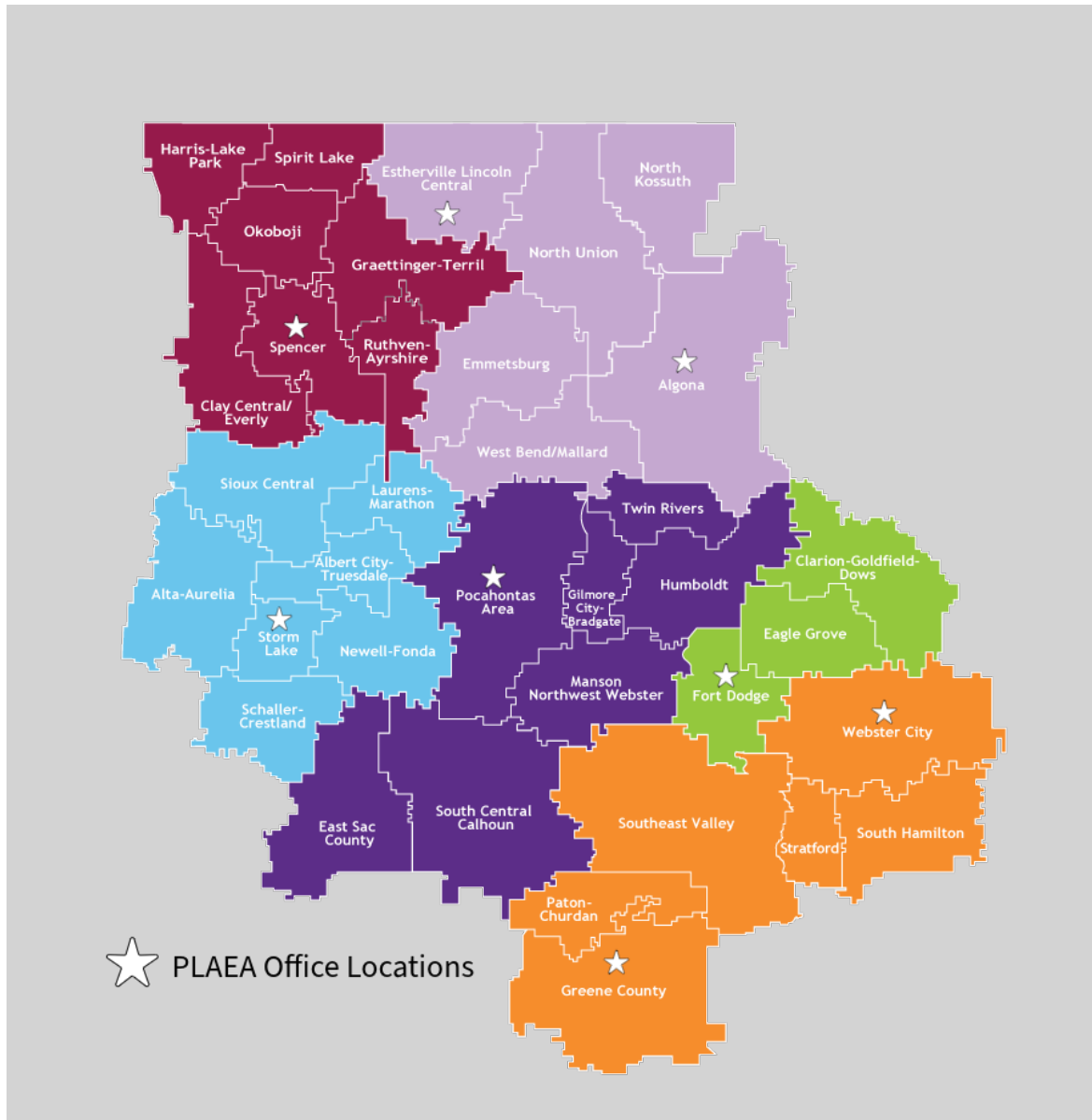
Prairie Lakes AEA grounds its services to districts around the [Iowa's AEAs Portfolio of Services](#) (to be revised after the Department of Education Professional Development approvals).

Some programs that are enhanced or differentiated at Prairie Lakes AEA include:

- Early ACCESS Support Team
- Creative Services Hub for Prairie Lakes AEA and Northwest AEA
- Lakes Partnership School
- Youth Shelter Care School
- Differentiation between English Language needs and disabilities

Locations

[Insert a map of the AEA, map of the AEA building locations, and provide a narrative surrounding each.]



Prairie Lakes AEA Offices

Algona – 116 S. Thorington, Algona, IA 50511

- Staff offices and workspaces
- Space for staff to work one-on-one with children 3 to 5 years of age
- Conference rooms used for hosting professional development events for agency staff
- Hearing booth

Estherville – 14 S. 6th St., Estherville, IA 51334

- Staff offices and workspaces
- Space for staff to work one-on-one with children 3 to 5 years of age
- Conference rooms used for hosting professional development events for agency staff

Fort Dodge – 1235 5th Ave S., Fort Dodge, IA 50501

- Staff offices and workspaces
- Space for staff to work one-on-one with children 3 to 5 years of age
- Conference rooms used for hosting professional development events for agency staff
- Administrative offices including Human Resources, Business and Technology
- Hearing booth

Jefferson* – 1403 N. Elm St., Jefferson, IA 50129 – **Board approved to close this office effective 7/1/2025*

- Staff offices and workspaces
- Space for staff to work one-on-one with children 3 to 5 years of age
- Conference rooms used for hosting professional development events for agency staff

Pocahontas – 500 NE 6th St., Pocahontas, IA 50574

- Staff offices and workspaces
- Space for staff to work one-on-one with children 3 to 5 years of age
- Conference rooms used for hosting professional development events for agency staff and the educators we serve
- Administrative offices including Chief Administrator and Regional Administrator
- Creative Services - Includes areas for printing and copying (small and large format), graphic design, laminating, large format printing
- Media library - Our library houses our physical collection of children's and professional books as well as other instructional materials that can be checked out by districts.
- Van delivery - Media resources, physical therapy equipment and other materials are delivered to each school building and AEA office from this location on a scheduled basis during the school year

Spencer – 23 East 7th St., Spencer, IA 51301

- Staff offices and workspaces
- Space for staff to work one-on-one with children 3 to 5 years of age
- Conference rooms used for hosting professional development events for agency staff
- Hearing booth

Storm Lake – 2004 Expansion Blvd., Storm Lake, IA 50588

- Staff offices and workspaces
- Space for staff to work one-on-one with children 3 to 5 years of age

- Conference rooms used for hosting professional development events for agency staff
- Hearing booth

Webster City – 506 2nd St., Webster City, IA 50595

- Staff offices and workspaces
- Space for staff to work one-on-one with children 3 to 5 years of age
- Conference rooms used for hosting professional development events for agency staff

Lakes Partnership School – 1900 Grand Ave #B1, Spencer, IA 51301

- Lakes Partnership School (LPS) is a day treatment school for students who are currently experiencing emotional and behavioral challenges that prevent them from making progress in the public-school setting. The school is a partnership between Prairie Lakes AEA, Spencer Community Schools and other northwest Iowa school districts. This is the first school of its kind in Prairie Lakes AEA and opened in September 2014. Spencer school serves as the host district as well as acts as the fiscal agent. Districts who send a student to the school are billed for the services that are provided for each individual student.

Youth Shelter Care – 301 Ave M W, Fort Dodge, IA 50501

- Shelter Care Educational Program - Prairie Lakes AEA's Shelter Care Educational Program serves students by providing an effective learning environment that meets their individual needs while they are staying at a shelter/detention facility. Programming provided at Youth Shelter Care of North Central Iowa.

Prairie Lakes AEA Owned or Leased Buildings

- 3 owned buildings – Fort Dodge, Pocahontas, Storm Lake
- 4 rented office suites, including 1 located within a school district

Capital Assets

[Provide a summary description of the AEA's capital assets.]

Owned Buildings

- 1235 5th Ave S., Fort Dodge
- 500 NE 6th St., Pocahontas
- 2004 Expansion Blvd., Strom Lake

Vans

- One 2017 Chevrolet Cargo Van
- One 2019 Ford Transit T-250 Van

- One 2022 Ford Transit Connect XLT Van
- One 2022 Ram Promaster Van

Staff

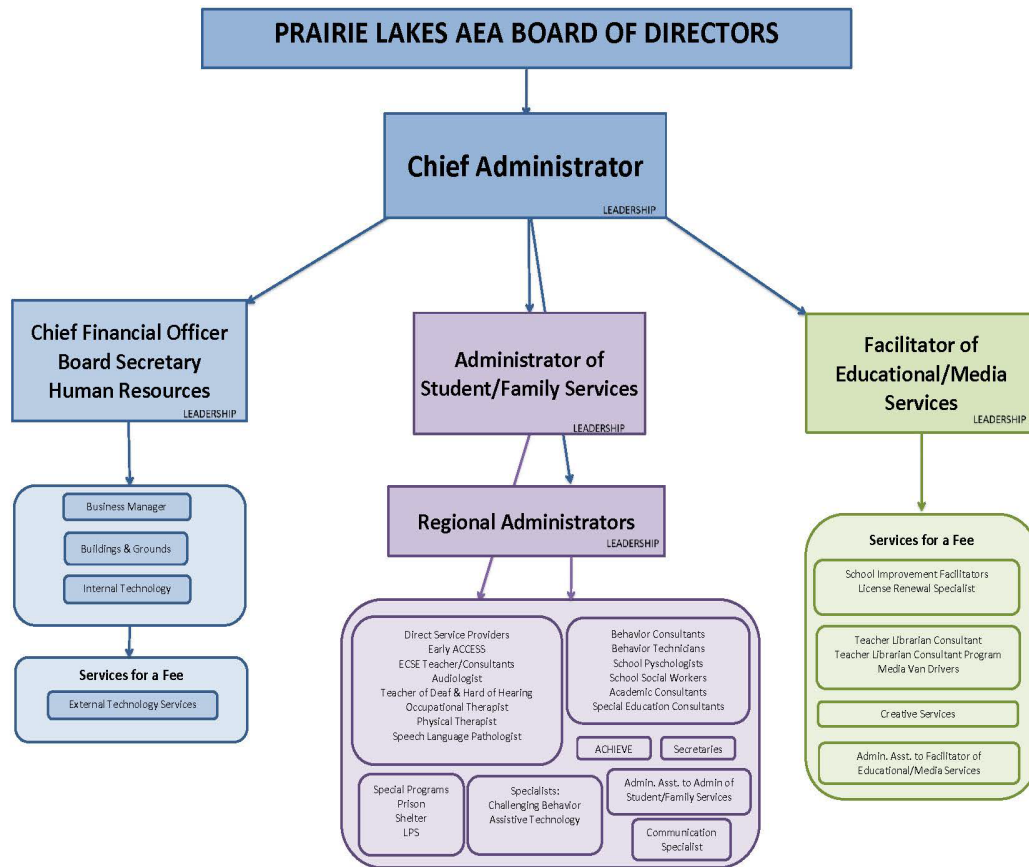
Iowa's AEAs are committed to employing highly qualified staff who offer and provide services and supports to students, educators, districts and families. AEAs are working as a statewide system to ensure all those we serve have access to our unified [Portfolio of Services](#), (to be revised after the Department of Education Professional Development approvals), regardless of the location of their district or the AEA in which they reside.

Information about the AEA's organizational structure, including specific positions, staff changes from FY25 to FY26 and administrative expenditures are provided below.

Organizational Chart

[Insert an organizational chart and enter a related narrative.]

To better serve districts/schools, Prairie Lakes is organized into six Special Education Service Areas in FY26. Prairie Lakes 's Educational Services employees will work with LEAs across Prairie Lakes 's service area. Prairie Lakes will continue to provide staff for the Lakes Partnership School program in Spencer and educational services at Youth Shelter Care and the Fort Dodge and North Central Correctional Facilities.



BEDS Position Codes

[Complete the table below and enter a narrative related to variances for staff.]

Prairie Lakes' staffing adjustments align with the decline in revenues. For FY26, the General Fund budget reflects a \$6.2 million reduction, with revenues down \$6.7 million compared to FY24. The table below does not account for the loss of 57 FTE in FY24. The total variance in staffing from FY24 to FY26 is 68.18 FTE. The primary reason for staff departures is uncertainty surrounding the longevity of the AEA system.

Table Name: AEA BEDS Position Codes - All Staff

Position Name	Position Code	FY25 FTE Count	FY26 FTE Count	Variance
AEA Chief Administrator	510	1	1	0
AEA Regional/Zone Coordinator	533	6	5	1
Behavior Analyst	620	1	1	0
Content/Curriculum Consultant	618	4.6	4	.60
Early Childhood Special Education	736	16	15	1
Itinerant Teacher	731	3	2	1
Juvenile Home Teacher	746	1	1	0
Mental Health Professional	621	1	1	0
Operations and Maintenance	181	1.5	1.5	0
Other Professional	137	1	1	0
Other Support	107	8.5	8.5	0
Other Technical Staff	142	4.86	4.4	.46
Paraprofessional/Aides	101	27	22	5
School Administrative Support	153	3	2	1
School Business Official	133	1	1	0
Social Worker	624	7	5	2
Special Education Consultant	616	14.71	9	5.71
Special Education Support	660	59.62	53.3	6.32
Special Education Teacher	745	4	4	0
Specialist	626	7.32	6	1.32
Student Support	106	16.5	15.5	1
Teacher Librarian/Media Specialist	722	1.39	1.39	0
Technology	121	5	5	0
Technology Support	141	2	2	0
Transportation (non-pupil)	175	2	2	0

FY25 to FY26 Staff Changes

Staff changes from FY25 to FY26 are detailed below for each position in the following programs: special education support services, educational services and media services.

Special Education Support Services Program

[Complete the table below and enter a narrative related to variances for staff in the special education support services program.]

Special Education FTE reductions result from staff retirements and resignations. The table below does not account for the loss of 30 FTE in FY24. The total variance in staffing from FY24 to FY26 is 54.35 FTE.

Table Name: AEA BEDS Position Codes - Special Education Support Services Program

Position Name	Position Code	FY25 FTE Count	FY26 FTE Count	Variance
AEA Regional/Zone Coordinator	533	6	5	1
Behavior Analyst	620	1	1	0
Early Childhood Special Education	736	16	15	1
Itinerant Teacher	731	3	2	1
Juvenile Home Teacher	746	1	1	0
Mental Health Professional	621	1	1	0
Other Professional	137	1	1	0
Other Support	107	6.5	6.5	0
Paraprofessional/Aides	101	27	22	5
Social Worker	624	7	5	2
Special Education Consultant	616	14.71	9	5.71
Special Education Support	660	59.62	53.3	6.32
Special Education Teacher	745	4	4	0
Specialist	626	7.32	6	1.32
Student Support	106	16.5	15.5	1

Educational Services Program

[Complete the table below and enter a narrative related to variances for staff in the educational services program.]

Educational Services FTE reductions are driven by decreased AEA Educational Services funding and an anticipated decline in purchased services from the districts served. The table below does not account for the loss of 15 FTE in FY24. The total staffing variance from FY24 to FY26 is 15.6 FTE.

Table Name: AEA BEDS Position Codes - Educational Services Program

Position Name	Position Code	FY25 FTE Count	FY26 FTE Count	Variance
Content/Curriculum Consultant	618	4.6	4	.6
Other Support	107	1	1	0

Media Services Program

[Complete the table below and enter a narrative related to variances for staff in the media services program.]

Media Services FTE reductions result from decreased AEA Media Services funding and an anticipated decline in purchased services from the districts served. The table below does not account for the loss of 2 FTE in FY24. The total staffing variance from FY24 to FY26 is 2.46 FTE.

Table Name: AEA BEDS Position Codes - Media Services Program

Position Name	Position Code	FY25 FTE Count	FY26 FTE Count	Variance
Other Support	107	1	1	0
Other Technical Staff	142	4.86	4.4	.46
Teacher Librarian/Media Specialist	722	1.39	1.39	0
Technology	121	3	3	0
Technology Support	141	2	2	0
Transportation (non-pupil)	175	2	2	0

Administrative Expenditures

Administrative expenditures include costs related to administration and administrators, as defined by HF2612 Sec. 17 (Iowa Acts 2024), which includes chief administrators, directors and department heads, regional administrators, regional and zone coordinators, district coordinators, and human resources and personnel managers. This section includes FY24 actual, FY25 re-estimated and FY26 proposed administrative staff levels and administrative expenditures.

Administrative Staff by FTE

[Complete the table below and enter a narrative related to variances.]

Prairie Lakes AEA has always prioritized directing funds toward students, maintaining a minimal number of administrative positions. We believe our agency operates with a lean and efficient administrative team.

Table Name: AEA Administrative Staff by FTE

Administrative Staff	FY24 Actual	FY25 Re-Estimated	FY26 Proposed	FY24-FY26 Variance Amount	FY24-FY26 Variance Percent
Chief Administrator	1	1	1	0	0
Directors & Department Heads	2	2	1	1	50%
Regional Administrators	6	4	4	2	33%
Human Resources	0	0	0	0	0
Other Administrative Positions	1	1	1	0	0
Total FTE	10	8	7	3	30%

Total Administrative Expenditures: FY24 Actual, FY25 Re-Estimated, & FY26 Proposed

Total administrative expenditures, detailed below by administration and administrative staff, are required to be reduced by at least 30% by July 1, 2026.

[Complete the table below and enter the related narrative.]

Table Name: Administrative Expenditures – Administration & Administrative Staff FY24 Actual, FY25 Re-Estimated, & FY26 Proposed

Expenditures: Administration	FY24 Actual	FY25 Re-Estimated	FY26 Proposed	FY24 to FY26 Reduction Amount	FY24 to FY26 Reduction Percent
General Administration (Func. 2300-2399)	234,640.93	137,552	152,761		
School Administration (Func. 2400-2499)	861,753.11	683,775	710,433		
Business & Central Administration (Func. 2500-2519, 2540-2599)	1,108,913.27	634,311	651,101		
Purchasing, Distributing, Printing (Func. 2520-2539)	530,004.99	558,829	500,000		
Sub-total Expenditures: Administration	2,735,312.30	2,014,467	2,014,295		
Revenue: Administration					
General Administration					
School Administration					
Business & Central Administration					
Purchasing, Distributing, Printing	436,586.70	440,000	440,000		
Sub-total Revenue: Administration					
Net Administration Expense					
General Administration	234,640.93	137,552	152,761	81,879.93	34.90%
School Administration	861,753.11	683,775	710,433	151,320.11	17.56%
Business & Central Administration	1,108,913.27	634,311	651,101	457,812.27	41.28%
Purchasing, Distributing, Printing	93,418.29	118,829	60,000	33,418.29	35.77%
Net Total Expenditures: Administration	2,298,725.60	1,574,467	1,574,295	724,430.60	31.51%

Expenditures: Administrative Staff (Obj. 100-299)	FY24 Actual	FY25 Re-Estimated	FY26 Proposed	FY24 to FY26 Reduction Amount	FY24 to FY26 Reduction Percent
Step One: Enter expenditures for administrative staff, including objects 100-299.					
Chief Administrator	265,758.24	258,181	258,181		
Directors and Department Heads	345,030.28	364,697	200,950		
Regional Administrators	958,532.55	634,106	475,280		
Regional and Zone Coordinators					
District Coordinators					
Human Resources					
Other Administrative Positions	203,835.46	205,213	205,213		
Sub-total Expenditures: Administration	1,773,156.53	1,462,197	1,139,624		
Step Two: Enter revenue received from sharing agreements for each function.					
Chief Administrator					
Directors and Department Heads					
Regional Administrators					
Regional and Zone Coordinators					
District Coordinators					
Human Resources					
Other Administrative Positions					
Sub-total Revenue from Sharing					
Step Three: Enter total expenditures for administrative staff (original administrative staff expenditures less revenue received from sharing agreements).					
Chief Administrator	265,758.24	258,181	258,181	7,577.24	2.85%
Directors and Department Heads	345,030.28	364,697	200,950	144,080.28	41.76%
Regional Administrators	958,532.55	634,106	475,280	483,252.55	50.42%
Regional and Zone Coordinators					
District Coordinators					
Human Resources					

Other Administrative Positions	203,835.46	205,213	205,213	-1,377.54	-.68%
Total Administrative Staff Expenditures	1,773,156.53	1,462,197	1,139,624	633,532.53	35.73%
	FY24 Actual	FY25 Re-Estimated	FY26 Proposed	FY24 to FY26 Reduction Amount	FY24 to FY26 Reduction Percent
Total Administrative Expenditures					
Total Expenditures: Administration	2,298,725.60	1,574,467	1,574,295	724,430.60	31.51%
Total Expenditures: Administrative Staff	1,773,156.53	1,462,197	1,139,624	633,532.53	35.73%
Total Administrative Expenditures	4,071,882.13	3,036,664	2,713,919	1,357,963.13	33.35%

Total Administrative Expenditures: Reduction

[Provide narrative for progress made toward administrative expenditure reduction.]

Prairie Lakes's Administrative staff positions have been reduced by 3 FTE (30%) since FY24 resulting in a reduction of approximately \$633,533. Prairie Lakes is budgeting \$500,000 for Print Shop revenues which will offset related Purchasing, Distributing, Printing, expenses in FY26.

Services

[Insert a table and a narrative description of services provided, the recipients of those services, and associated cost to the entity purchasing the service (e.g., rates, fee schedule), if applicable, and the cost to the AEA to provide the service.]

See appendix A.

Centralized Services

[Include a narrative to describe the AEA's centralized services, which are defined for this purpose as staff and services that are centralized and shared with other AEAs.]

The table below provides a list of the services that Prairie Lakes AEA is centralizing through sharing with other AEA's in the Iowa AEA system. Many of these centralized services will provide efficiency in management of the services but maintain effective services and supports to the schools, teachers, and students of Prairie Lakes AEA.

Services Provided	Centralized From	Shared With
Creative Services	Prairie Lakes	Northwest
Lending Library	Northwest	Prairie Lakes
Mathematics Consultant	Green Hills	Prairie Lakes
ELL/Title III	Heartland	Prairie Lakes
ELL/Title III	NWAEA	Prairie Lakes
Science Consultant	Heartland	Prairie Lakes
Hearing Booth	Prairie Lakes	NWAEA
Instructional Technology Consultant	NWAEA	Prairie Lakes
Professional Learning Coordinator	NWAEA	Prairie Lakes
Technology Services	NWAEA	Prairie Lakes
Regionalized Technology Services	Heartland/Green Hills, Keystone/Central Rivers, Grant Wood/Miss Bend/Great Prairie, Northwest/Prairie Lakes	Systemwide
* New Special Education Teacher Mentoring - Investigating on statewide efficiency	To Be Determined	Systemwide
* Statewide AEA System EEO Plan - Investigating on statewide efficiency	To Be Determined	Systemwide
* Shared Shelter School Secretary - Investigating on statewide efficiency	To Be Determined	Systemwide
* Shared Detention Center and Shelter Administrator - Investigating on statewide efficiency	To Be Determined	Systemwide

* Child Find New Staff Onboarding / PD - Investigating on statewide efficiency	To Be Determined	Systemwide
* Related Services New Staff Onboarding / PD - Investigating on statewide efficiency	To Be Determined	Systemwide
* Science Consulting - Investigating on statewide efficiency	To Be Determined	Systemwide
* Early ACCESS (non 811) - Investigating on statewide efficiency	To Be Determined	Systemwide
* HR Supports across AEAs - Investigating on statewide efficiency	To Be Determined	Systemwide
* SBO Supports across AEAs - Investigating on statewide efficiency	To Be Determined	Systemwide
* Para-professional PD Development - Investigating on statewide efficiency	To Be Determined	Systemwide
* Assistive Technology Support	To Be Determined	Systemwide
* Medicaid Billing	To Be Determined	Systemwide
* IEP Weighting	To Be Determined	Systemwide
* Investigating statewide efficiency in the next two years.		

Centers of Excellence

[Include a narrative to describe the AEA's centers of excellence, which are defined for this purpose as content expertise and capacity in a targeted special education service area with statewide impact.]

Prairie Lakes AEA will serve as a center of excellence Explicit Instruction Practices for Learners with Disabilities. Explicit Instruction is a teaching methodology that is effective for students with disabilities. The Center of Excellence will provide expertise, technical assistance and a community of practice for instructors across the state.

Iowa's AEAs are committed to collaborating as a statewide system to establish additional Centers of Excellence, which will bring additional efficiencies and effectiveness to the system.

Center of Excellence (CoE)	Lead AEA	Partnering AEA's	Implementation Date
Recruitment, Retainment, Onboarding, Mentoring & Professional Learning for AEA Special Education Staff <ul style="list-style-type: none"> Iowa AEA School Psychologist 	Heartland AEA	Systemwide	July 1, 2025
Iowa AEA Early Access CoE	Keystone/Central Rivers AEA	Systemwide	July 1, 2025
Assistive Technology Support for Learners with Disabilities	Green Hills AEA/Heartland AEA	Systemwide	July 1, 2026
Leadership for Closing the Achievement Gap for Learners with Disabilities	Mississippi Bend AEA	Systemwide	July 1, 2026
Explicit Instruction Practices for Learners with Disabilities	Prairie Lakes AEA	Systemwide	January 1, 2026
Assessment, Linkages, and Instructional Programming Practices for Successful Post Secondary Transition for Learners with Disabilities	Grant Wood AEA	Systemwide	July 1, 2026
Instruction for Learners with Significant Cognitive Disabilities	Northwest AEA	Systemwide	July 1, 2026
Language and Literacy for Learners with Disabilities	Great Prairie AEA	Systemwide	January 1, 2026

Fiscal Detail

[Enter narrative of information provided in the section.]

For FY26, Prairie Lakes AEA is budgeting a General Fund revenue reduction of approximately \$3.4 million. Since FY24, total revenues have decreased by about \$7.7 million (28%). As a result, administrative staff has been reduced by 30%, certified staff by approximately 28%, and classified staff by about 3%. In addition to these revenue declines, Prairie Lakes AEA faces the same inflationary pressures affecting other government agencies in Iowa.

General Fund Balance: FY24 Actual, FY25 Re-Estimated, & FY26 Proposed

[Include narrative to explain fund balance type (e.g., non-spendable, restricted, committed) reflected in the table below, including reasons for purposeful balances and plans for use.]

Prairie Lakes 's non-spendable fund balances relate to non-spendable inventory at the end of FY24. Prairie Lakes had special education-restricted fund balances for TQ professional development in FY24. Prairie Lakes 's committed fund balances were for Phase II of a remodeling project at the Fort Dodge office. This project is currently on hold as we reassess our priorities.

Table Name: General Fund Balance Detail FY24 Actual, FY25 Re-Estimated, & FY26 Proposed

General Fund Balance Detail	FY24 Actual	FY25 Re-Estimated	FY26 Proposed
Non-Spendable Fund Balance, Special Education Support Services	685	685	685
Non-Spendable Fund Balance, Other	32,434	32,434	32,434
Restricted Fund Balance, Special Education Support Services	47,773	0	0
Restricted Fund Balance, Other	2,367	0	0
Committed Fund Balance, Special Education Support Services	1,620,371	1,499,135	1,499,135
Committed Fund Balance, Other	370,173	363,472	363,472
Assigned Fund Balance, Special Education Support Services	0	0	0
Assigned Fund Balance, Other	0	0	0
Unassigned Fund Balance, Special Education Support Services	1,276,316	1,962,574	2,192,284
Unassigned Fund Balance, Other	3,921,290	3,836,869	2,837,488
Total General Fund Balance	7,271,409	7,695,169	6,925,498

Three-Year Comparison for Budgeted Funds: FY24 Actual, FY25 Re-Estimated, & FY26 Proposed

[Include narrative of the budget detail. Summarize the FY26 proposed budget assumptions mentioned earlier in the report (e.g., districts served, programs offered). Explain the assumptions used to estimate revenues and expenditures. Additionally, include any assumptions used to generate the budget that were not already covered in the report narrative above (e.g., types of contracts for services, programs, sharing agreements, capital purchases).]

Prairie Lakes 's FY26 budget is based on a 0% SSA increase and the continuation of the \$32.5 million cut to the AEAs. Prairie Lakes anticipates receiving 90% of the special education funding flowing to the districts it serves. Prairie Lakes anticipates a decrease to the IDEA federal grants due to the loss of four districts opting to receive special education services from a neighboring AEA. Approximately 76% of Prairie Lakes 's budgeted FY26 expenditures are related to Student Support Services and Instructional Staff Support Services. Approximately 5% of Prairie Lakes 's expenditures support Instruction through the Lakes Partnership School, Youth Shelter Care and the Fort Dodge and North Central Correction Facilities. Prairie Lakes is budgeting \$1.3 million (6%) for Other Financing Uses, which is the Part B flow through funds passed to the LEAs. Prairie Lakes does not currently have any outstanding loans and is not budgeting for any debt in FY26.

Table Name: Resources, Expenditures & Financing Uses, & Funds Balance FY24 Actual, FY25 Re-Estimated, & FY26 Proposed

Resources: Revenues, Other Financing Sources, and Beginning Funds Balance	FY24 Actual	FY25 Re-Estimated	FY26 Proposed
Taxes (Controlled Funding)	7,039,586.00	4,637,136	2,775,251
Tuition/Transportation	16,175.00	37,000	41,000
Earnings on Investments			
Nutrition Program Sales			
Student Activities & Sales			
Other Revenues from Local Sources	1,886,224.27	1,343,372	2,268,748
Intermediate Revenues			
State Aid (Controlled Funding)	6,780,390.00	7,106,372	5,428,849
Juvenile Home Tuition Aid	250,000.00	240,000	230,000
Other State Revenues	1,850,959.67	1,562,913	1,561,138
IDEA Federal Grant	9,079,551.00	8,908,674	8,096,872
Other Federal Revenues	828,925.91	609,657	609,657
Long-Term Debt Proceeds			
Interfund Transfers In			
Proceeds of Fixed Asset Dispositions	1,000,000.00		
Other Financing Sources			
Beginning Funds Balance	6,839,270.61	7,271,409	7,695,169
Total Resources	35,571,082.46	31,716,533	28,706,684

Expenditures & Other Financing Uses	FY24 Actual	FY25 Re-Estimated	FY26 Proposed
Instruction	1,067,270.69	1,001,303	1,043,950
Student Support Services	16,010,122.11	15,470,268	13,623,470
Instructional Staff Support Services	3,537,637.49	2,067,895	2,030,089
General Administration	845,429.45	760,430	611,892
School Administration	1,820,285.66	1,317,881	1,185,713
Business & Central Support	1,312,748.73	839,524	856,314
Purchasing, Distributing, Printing, Duplicating	530,004.99	558,829	500,000
Plant Operations & Maintenance	1,520,078.61	584,094	640,275
Student Transportation			
Other Support Services			
Non-Instructional Programs	137,342.58		
Facilities Acquisition & Construction			
Debt Service			
Interfund Transfers Out			
Other Financing Uses	1,518,753.21	1,421,140	1,289,483
Total Expenditures & Other Financing Uses	28,299,673.52	24,021,364	21,781,186
Funds Balance	FY24 Actual	FY25 Re-Estimated	FY26 Proposed
Total Resources	35,571,082.46	31,716,533	28,706,684
Total Expenditures & Other Financing Uses	28,299,673.52	24,021,364	21,781,186
Ending Funds Balance	7,271,408.94	7,695,169	6,925,498

Additional FY26 Budget Assumptions

[Please insert narrative on additional assumptions informed by potential opportunities and challenges not otherwise detailed in the report.]

Prairie Lakes continues efforts to fill open special education positions while exploring innovative ways to deliver services amid ongoing hiring challenges. With a reduced special education staff, the agency remains committed to meeting the needs of the districts it serves.

For FY26, Prairie Lakes is projecting a deficit of approximately \$770,000. However, potential factors such as the Supplemental State Aid increase and settlement agreements with employee groups may help reduce this deficit. Additionally, ongoing discussions with LEAs about their service needs could create new revenue opportunities.

Despite these challenges, Prairie Lakes remains in a strong financial position to navigate FY26 effectively.

Appendix A

Educational Services

Service/Program Name	Detailed Description of Service/Program (~150 words)	Cost to AEA Per Unit	Cost to Customer Per Unit	Customer Cost Rationale/Methodology	Name of LEA/Nonpublic School Purchasing Service/Program	Total LEA/Nonpublic School Purchase Amount of Each Service/Program
Consulting Services	ED - Diverse Learners - English Learners	The cost to PLAEA varies dependent on the consultant delivering the training. Costs range from \$740 to \$954 per day.	\$900 full day, \$450 half day, \$225 quarter day	Annual maintenance to update resources and all associated links to all interventions included in the document requires staff per diem and benefits.	Algona CSD	\$900.00
Consulting Services	ED - Diverse Learners - English Learners	The cost to PLAEA varies dependent on the consultant delivering the training. Costs range from \$740 to \$954 per day.	\$900 full day, \$450 half day, \$225 quarter day	The system explored consultant costs in both Nebraska and Wisconsin along with AEA staff per diem and benefits, staff professional development and training costs, staff technology, staff travel reimbursement, agency costs, materials for training.	Algona CSD	\$900.00
Consulting Services	ED - Leadership & Infrastructure - Infrastructure	The cost to PLAEA varies dependent on the consultant delivering the training. Costs range from \$740 to \$954 per day.	\$900 full day, \$450 half day, \$225 quarter day	The system explored consultant costs in both Nebraska and Wisconsin along with AEA staff per diem and benefits, staff professional development and training costs, staff technology, staff travel reimbursement, agency costs, materials for training.	Clay Central-Everly CSD	\$450.00

Consulting Services	ED - Leadership & Infrastructure - Infrastructure	The cost to PLAEA varies dependent on the consultant delivering the training. Costs range from \$740 to \$954 per day.	\$900 full day, \$450 half day, \$225 quarter day	The system explored consultant costs in both Nebraska and Wisconsin along with AEA staff per diem and benefits, staff professional development and training costs, staff technology, staff travel reimbursement, agency costs, materials for training.	Clay Central-Everyly CSD	\$450.00
Consulting Services	ED - Leadership & Infrastructure - Leadership Support	The cost to PLAEA varies dependent on the consultant delivering the training. Costs range from \$740 to \$954 per day.	\$900 full day, \$450 half day, \$225 quarter day	The system explored consultant costs in both Nebraska and Wisconsin along with AEA staff per diem and benefits, staff professional development and training costs, staff technology, staff travel reimbursement, agency costs, materials for training.	Clay Central-Everyly CSD	\$450.00
Consulting Services	ED - Leadership & Infrastructure - School & Community Planning	The cost to PLAEA varies dependent on the consultant delivering the training. Costs range from \$740 to \$954 per day.	\$900 full day, \$450 half day, \$225 quarter day	The system explored consultant costs in both Nebraska and Wisconsin along with AEA staff per diem and benefits, staff professional development and training costs, staff technology, staff travel reimbursement, agency costs, materials for training.	Clay Central-Everyly CSD	\$450.00
Consulting Services	ED - Leadership & Infrastructure - School & Community Planning	The cost to PLAEA varies dependent on the consultant delivering the training. Costs range from \$740 to \$954 per day.	\$900 full day, \$450 half day, \$225 quarter day	The system explored consultant costs in both Nebraska and Wisconsin along with AEA staff per diem and benefits, staff professional development and training costs, staff technology, staff travel reimbursement, agency costs, materials for training.	Clay Central-Everyly CSD	\$450.00

Consulting Services	ED - SEBH - System Support	The cost to PLAEA varies dependent on the consultant delivering the training. Costs range from \$740 to \$954 per day.	\$900 full day, \$450 half day, \$225 quarter day	The system explored consultant costs in both Nebraska and Wisconsin along with AEA staff per diem and benefits, staff professional development and training costs, staff technology, staff travel reimbursement, agency costs, materials for training.	Clay Central-Everly CSD	\$450.00
Consulting Services	ED - Leadership & Infrastructure - Infrastructure	The cost to PLAEA varies dependent on the consultant delivering the training. Costs range from \$740 to \$954 per day.	\$900 full day, \$450 half day, \$225 quarter day	The system explored consultant costs in both Nebraska and Wisconsin along with AEA staff per diem and benefits, staff professional development and training costs, staff technology, staff travel reimbursement, agency costs, materials for training.	Eagle Grove CSD	\$450.00
Consulting Services	ED - Math - Intervention System	The cost to PLAEA varies dependent on the consultant delivering the training. Costs range from \$740 to \$954 per day.	\$900 full day, \$450 half day, \$225 quarter day	The system explored consultant costs in both Nebraska and Wisconsin along with AEA staff per diem and benefits, staff professional development and training costs, staff technology, staff travel reimbursement, agency costs, materials for training.	Eagle Grove CSD	\$900.00
Consulting Services	ED - Leadership & Infrastructure - Infrastructure	The cost to PLAEA varies dependent on the consultant delivering the training. Costs range from \$740 to \$954 per day.	\$900 full day, \$450 half day, \$225 quarter day	The system explored consultant costs in both Nebraska and Wisconsin along with AEA staff per diem and benefits, staff professional development and training costs, staff technology, staff travel reimbursement, agency costs, materials for training.	East Sac County CSD	\$450.00

Consulting Services	ED - Leadership & Infrastructure - Infrastructure	The cost to PLAEA varies dependent on the consultant delivering the training. Costs range from \$740 to \$954 per day.	\$900 full day, \$450 half day, \$225 quarter day	The system explored consultant costs in both Nebraska and Wisconsin along with AEA staff per diem and benefits, staff professional development and training costs, staff technology, staff travel reimbursement, agency costs, materials for training.	East Sac County CSD	\$450.00
Consulting Services	ED - Leadership & Infrastructure - MTSS Supports	The cost to PLAEA varies dependent on the consultant delivering the training. Costs range from \$740 to \$954 per day.	\$900 full day, \$450 half day, \$225 quarter day	The system explored consultant costs in both Nebraska and Wisconsin along with AEA staff per diem and benefits, staff professional development and training costs, staff technology, staff travel reimbursement, agency costs, materials for training.	Emmetsburg Catholic	\$450.00
Consulting Services	ED - Diverse Learners	The cost to PLAEA varies dependent on the consultant delivering the training. Costs range from \$740 to \$954 per day.	\$900 full day, \$450 half day, \$225 quarter day	The system explored consultant costs in both Nebraska and Wisconsin along with AEA staff per diem and benefits, staff professional development and training costs, staff technology, staff travel reimbursement, agency costs, materials for training.	Emmetsburg CSD	\$450.00
Consulting Services	ED - Leadership & Infrastructure - MTSS Supports	The cost to PLAEA varies dependent on the consultant delivering the training. Costs range from \$740 to \$954 per day.	\$900 full day, \$450 half day, \$225 quarter day	The system explored consultant costs in both Nebraska and Wisconsin along with AEA staff per diem and benefits, staff professional development and training costs, staff technology, staff travel reimbursement, agency costs, materials for training.	Estherville-Lincoln Central CSD	\$450.00

Consulting Services	ED - Leadership & Infrastructure - MTSS Supports	The cost to PLAEA varies dependent on the consultant delivering the training. Costs range from \$740 to \$954 per day.	\$900 full day, \$450 half day, \$225 quarter day	The system explored consultant costs in both Nebraska and Wisconsin along with AEA staff per diem and benefits, staff professional development and training costs, staff technology, staff travel reimbursement, agency costs, materials for training.	Estherville-Lincoln Central CSD	\$900.00
Consulting Services	ED - Leadership & Infrastructure - MTSS Supports	The cost to PLAEA varies dependent on the consultant delivering the training. Costs range from \$740 to \$954 per day.	\$900 full day, \$450 half day, \$225 quarter day	The system explored consultant costs in both Nebraska and Wisconsin along with AEA staff per diem and benefits, staff professional development and training costs, staff technology, staff travel reimbursement, agency costs, materials for training.	Estherville-Lincoln Central CSD	\$450.00
Consulting Services	ED - SEBH - Instructional Practices	The cost to PLAEA varies dependent on the consultant delivering the training. Costs range from \$740 to \$954 per day.	\$900 full day, \$450 half day, \$225 quarter day	The system explored consultant costs in both Nebraska and Wisconsin along with AEA staff per diem and benefits, staff professional development and training costs, staff technology, staff travel reimbursement, agency costs, materials for training.	Estherville-Lincoln Central CSD	\$450.00
Consulting Services	ED - Literacy - Standards Work	The cost to PLAEA varies dependent on the consultant delivering the training. Costs range from \$740 to \$954 per day.	\$900 full day, \$450 half day, \$225 quarter day	The system explored consultant costs in both Nebraska and Wisconsin along with AEA staff per diem and benefits, staff professional development and training costs, staff technology, staff travel reimbursement, agency costs, materials for training.	Graettinger-Terril CSD	\$450.00

Consulting Services	ED - Math - Standards Work	The cost to PLAEA varies dependent on the consultant delivering the training. Costs range from \$740 to \$954 per day.	\$900 full day, \$450 half day, \$225 quarter day	The system explored consultant costs in both Nebraska and Wisconsin along with AEA staff per diem and benefits, staff professional development and training costs, staff technology, staff travel reimbursement, agency costs, materials for training.	Graettinger-Terril CSD	\$450.00
Consulting Services	ED - SEBH - Instructional Practices	The cost to PLAEA varies dependent on the consultant delivering the training. Costs range from \$740 to \$954 per day.	\$900 full day, \$450 half day, \$225 quarter day	The system explored consultant costs in both Nebraska and Wisconsin along with AEA staff per diem and benefits, staff professional development and training costs, staff technology, staff travel reimbursement, agency costs, materials for training.	Graettinger-Terril CSD	\$450.00
Consulting Services	ED - SEBH - Instructional Practices	The cost to PLAEA varies dependent on the consultant delivering the training. Costs range from \$740 to \$954 per day.	\$900 full day, \$450 half day, \$225 quarter day	The system explored consultant costs in both Nebraska and Wisconsin along with AEA staff per diem and benefits, staff professional development and training costs, staff technology, staff travel reimbursement, agency costs, materials for training.	Graettinger-Terril CSD	\$900.00
Consulting Services	ED - SEBH - System Support	The cost to PLAEA varies dependent on the consultant delivering the training. Costs range from \$740 to \$954 per day.	\$900 full day, \$450 half day, \$225 quarter day	The system explored consultant costs in both Nebraska and Wisconsin along with AEA staff per diem and benefits, staff professional development and training costs, staff technology, staff travel reimbursement, agency costs, materials for training.	Graettinger-Terril CSD	\$450.00

Consulting Services	ED - Math - Intervention System	The cost to PLAEA varies dependent on the consultant delivering the training. Costs range from \$740 to \$954 per day.	\$900 full day, \$450 half day, \$225 quarter day	The system explored consultant costs in both Nebraska and Wisconsin along with AEA staff per diem and benefits, staff professional development and training costs, staff technology, staff travel reimbursement, agency costs, materials for training.	Greene County CSD	\$900.00
Consulting Services	ED - Math - Intervention System	The cost to PLAEA varies dependent on the consultant delivering the training. Costs range from \$740 to \$954 per day.	\$900 full day, \$450 half day, \$225 quarter day	The system explored consultant costs in both Nebraska and Wisconsin along with AEA staff per diem and benefits, staff professional development and training costs, staff technology, staff travel reimbursement, agency costs, materials for training.	Greene County CSD	\$900.00
Consulting Services	ED - Math - Intervention System	The cost to PLAEA varies dependent on the consultant delivering the training. Costs range from \$740 to \$954 per day.	\$900 full day, \$450 half day, \$225 quarter day	The system explored consultant costs in both Nebraska and Wisconsin along with AEA staff per diem and benefits, staff professional development and training costs, staff technology, staff travel reimbursement, agency costs, materials for training.	Greene County CSD	\$900.00
Consulting Services	ED - Literacy - Standards Work	The cost to PLAEA varies dependent on the consultant delivering the training. Costs range from \$740 to \$954 per day.	\$900 full day, \$450 half day, \$225 quarter day	The system explored consultant costs in both Nebraska and Wisconsin along with AEA staff per diem and benefits, staff professional development and training costs, staff technology, staff travel reimbursement, agency costs, materials for training.	Ruthven-Ayrshire CSD	\$450.00

Consulting Services	ED - SEBH - System Support	The cost to PLAEA varies dependent on the consultant delivering the training. Costs range from \$740 to \$954 per day.	\$900 full day, \$450 half day, \$225 quarter day	The system explored consultant costs in both Nebraska and Wisconsin along with AEA staff per diem and benefits, staff professional development and training costs, staff technology, staff travel reimbursement, agency costs, materials for training.	Harris-Lake Park CSD	\$450.00
Consulting Services	ED - Diverse Learners - English Learners	The cost to PLAEA varies dependent on the consultant delivering the training. Costs range from \$740 to \$954 per day.	\$900 full day, \$450 half day, \$225 quarter day	The system explored consultant costs in both Nebraska and Wisconsin along with AEA staff per diem and benefits, staff professional development and training costs, staff technology, staff travel reimbursement, agency costs, materials for training.	Humboldt CSD	\$900.00
Consulting Services	ED - Diverse Learners - English Learners	The cost to PLAEA varies dependent on the consultant delivering the training. Costs range from \$740 to \$954 per day.	\$900 full day, \$450 half day, \$225 quarter day	The system explored consultant costs in both Nebraska and Wisconsin along with AEA staff per diem and benefits, staff professional development and training costs, staff technology, staff travel reimbursement, agency costs, materials for training.	Humboldt CSD	\$450.00
Consulting Services	ED - Diverse Learners - English Learners	The cost to PLAEA varies dependent on the consultant delivering the training. Costs range from \$740 to \$954 per day.	\$900 full day, \$450 half day, \$225 quarter day	The system explored consultant costs in both Nebraska and Wisconsin along with AEA staff per diem and benefits, staff professional development and training costs, staff technology, staff travel reimbursement, agency costs, materials for training.	Humboldt CSD	\$450.00

Consulting Services	ED - Diverse Learners - English Learners	The cost to PLAEA varies dependent on the consultant delivering the training. Costs range from \$740 to \$954 per day.	\$900 full day, \$450 half day, \$225 quarter day	The system explored consultant costs in both Nebraska and Wisconsin along with AEA staff per diem and benefits, staff professional development and training costs, staff technology, staff travel reimbursement, agency costs, materials for training.	Humboldt CSD	\$450.00
Consulting Services	ED - Diverse Learners - English Learners	The cost to PLAEA varies dependent on the consultant delivering the training. Costs range from \$740 to \$954 per day.	\$900 full day, \$450 half day, \$225 quarter day	The system explored consultant costs in both Nebraska and Wisconsin along with AEA staff per diem and benefits, staff professional development and training costs, staff technology, staff travel reimbursement, agency costs, materials for training.	Humboldt CSD	\$900.00
Consulting Services	ED - Diverse Learners - English Learners	The cost to PLAEA varies dependent on the consultant delivering the training. Costs range from \$740 to \$954 per day.	\$900 full day, \$450 half day, \$225 quarter day	The system explored consultant costs in both Nebraska and Wisconsin along with AEA staff per diem and benefits, staff professional development and training costs, staff technology, staff travel reimbursement, agency costs, materials for training.	Humboldt CSD	\$900.00
Consulting Services	ED - Leadership & Infrastructure - MTSS Supports	The cost to PLAEA varies dependent on the consultant delivering the training. Costs range from \$740 to \$954 per day.	\$900 full day, \$450 half day, \$225 quarter day	The system explored consultant costs in both Nebraska and Wisconsin along with AEA staff per diem and benefits, staff professional development and training costs, staff technology, staff travel reimbursement, agency costs, materials for training.	Humboldt CSD	\$450.00

Consulting Services	ED - Leadership & Infrastructure - MTSS Supports	The cost to PLAEA varies dependent on the consultant delivering the training. Costs range from \$740 to \$954 per day.	\$900 full day, \$450 half day, \$225 quarter day	The system explored consultant costs in both Nebraska and Wisconsin along with AEA staff per diem and benefits, staff professional development and training costs, staff technology, staff travel reimbursement, agency costs, materials for training.	Humboldt CSD	\$450.00
Consulting Services	ED - Literacy - Standards Work	The cost to PLAEA varies dependent on the consultant delivering the training. Costs range from \$740 to \$954 per day.	\$900 full day, \$450 half day, \$225 quarter day	The system explored consultant costs in both Nebraska and Wisconsin along with AEA staff per diem and benefits, staff professional development and training costs, staff technology, staff travel reimbursement, agency costs, materials for training.	St. Mary's-Humboldt	\$450.00
Consulting Services	ED - SEBH - Instructional Practices	The cost to PLAEA varies dependent on the consultant delivering the training. Costs range from \$740 to \$954 per day.	\$900 full day, \$450 half day, \$225 quarter day	The system explored consultant costs in both Nebraska and Wisconsin along with AEA staff per diem and benefits, staff professional development and training costs, staff technology, staff travel reimbursement, agency costs, materials for training.	St. Mary's-Humboldt	\$450.00
Consulting Services	ED - Literacy - Instructional Strategies	The cost to PLAEA varies dependent on the consultant delivering the training. Costs range from \$740 to \$954 per day.	\$900 full day, \$450 half day, \$225 quarter day	The system explored consultant costs in both Nebraska and Wisconsin along with AEA staff per diem and benefits, staff professional development and training costs, staff technology, staff travel reimbursement, agency costs, materials for training.	Laurens-Marathon CSD	\$450.00

Consulting Services	ED - Literacy - Instructional Practices	The cost to PLAEA varies dependent on the consultant delivering the training. Costs range from \$740 to \$954 per day.	\$900 full day, \$450 half day, \$225 quarter day	The system explored consultant costs in both Nebraska and Wisconsin along with AEA staff per diem and benefits, staff professional development and training costs, staff technology, staff travel reimbursement, agency costs, materials for training.	Laurens-Marathon CSD	\$450.00
Consulting Services	ED - SEBH - Instructional Practices	The cost to PLAEA varies dependent on the consultant delivering the training. Costs range from \$740 to \$954 per day.	\$900 full day, \$450 half day, \$225 quarter day	The system explored consultant costs in both Nebraska and Wisconsin along with AEA staff per diem and benefits, staff professional development and training costs, staff technology, staff travel reimbursement, agency costs, materials for training.	Manson-Northwest Webster CSD	\$450.00
Consulting Services	ED - SEBH - Instructional Practices	The cost to PLAEA varies dependent on the consultant delivering the training. Costs range from \$740 to \$954 per day.	\$900 full day, \$450 half day, \$225 quarter day	The system explored consultant costs in both Nebraska and Wisconsin along with AEA staff per diem and benefits, staff professional development and training costs, staff technology, staff travel reimbursement, agency costs, materials for training.	Manson-Northwest Webster CSD	\$450.00
Consulting Services	AEA Administrator Access	The cost to PLAEA varies dependent on the consultant delivering the training. Costs range from \$740 to \$954 per day.	\$1200 full day, \$600 half day	The system explored consultant costs in both Nebraska and Wisconsin along with AEA staff per diem and benefits, staff professional development and training costs, staff technology, staff travel reimbursement, agency costs, materials for training.	North Kossuth CSD	\$600.00

Consulting Services	ED - Leadership & Infrastructure - Infrastructure	The cost to PLAEA varies dependent on the consultant delivering the training. Costs range from \$740 to \$954 per day.	\$900 full day, \$450 half day, \$225 quarter day	The system explored consultant costs in both Nebraska and Wisconsin along with AEA staff per diem and benefits, staff professional development and training costs, staff technology, staff travel reimbursement, agency costs, materials for training.	North Kossuth CSD	\$450.00
Consulting Services	ED - SEBH - Instructional Practices	The cost to PLAEA varies dependent on the consultant delivering the training. Costs range from \$740 to \$954 per day.	\$900 full day, \$450 half day, \$225 quarter day	The system explored consultant costs in both Nebraska and Wisconsin along with AEA staff per diem and benefits, staff professional development and training costs, staff technology, staff travel reimbursement, agency costs, materials for training.	North Kossuth CSD	\$450.00
Consulting Services	AEA Administrator Access	The cost to PLAEA varies dependent on the consultant delivering the training. Costs range from \$740 to \$954 per day.	\$1200 full day, \$600 half day	The system explored consultant costs in both Nebraska and Wisconsin along with AEA staff per diem and benefits, staff professional development and training costs, staff technology, staff travel reimbursement, agency costs, materials for training.	North Kossuth CSD	\$600.00
Consulting Services	ED - Literacy - Standards Work	The cost to PLAEA varies dependent on the consultant delivering the training. Costs range from \$740 to \$954 per day.	\$900 full day, \$450 half day, \$225 quarter day	The system explored consultant costs in both Nebraska and Wisconsin along with AEA staff per diem and benefits, staff professional development and training costs, staff technology, staff travel reimbursement, agency costs, materials for training.	Sacred Heart-Spencer	\$450.00

Consulting Services	ED - Literacy - Standards Work	The cost to PLAEA varies dependent on the consultant delivering the training. Costs range from \$740 to \$954 per day.	\$900 full day, \$450 half day, \$225 quarter day	The system explored consultant costs in both Nebraska and Wisconsin along with AEA staff per diem and benefits, staff professional development and training costs, staff technology, staff travel reimbursement, agency costs, materials for training.	Sacred Heart-Spencer	\$450.00
Consulting Services	ED - Math - HQIM	The cost to PLAEA varies dependent on the consultant delivering the training. Costs range from \$740 to \$954 per day.	\$900 full day, \$450 half day, \$225 quarter day	The system explored consultant costs in both Nebraska and Wisconsin along with AEA staff per diem and benefits, staff professional development and training costs, staff technology, staff travel reimbursement, agency costs, materials for training.	Sacred Heart-Spencer	\$450.00
Consulting Services	ED - Leadership & Infrastructure - Leadership Support	The cost to PLAEA varies dependent on the consultant delivering the training. Costs range from \$740 to \$954 per day.	\$900 full day, \$450 half day, \$225 quarter day	The system explored consultant costs in both Nebraska and Wisconsin along with AEA staff per diem and benefits, staff professional development and training costs, staff technology, staff travel reimbursement, agency costs, materials for training.	Sioux Central CSD	\$450.00
Consulting Services	ED - SEBH - Instructional Practices	The cost to PLAEA varies dependent on the consultant delivering the training. Costs range from \$740 to \$954 per day.	\$900 full day, \$450 half day, \$225 quarter day	The system explored consultant costs in both Nebraska and Wisconsin along with AEA staff per diem and benefits, staff professional development and training costs, staff technology, staff travel reimbursement, agency costs, materials for training.	Sioux Central CSD	\$450.00

Consulting Services	AEA Administrator Access	The cost to PLAEA varies dependent on the consultant delivering the training. Costs range from \$740 to \$954 per day.	\$1200 full day, \$600 half day	The system explored consultant costs in both Nebraska and Wisconsin along with AEA staff per diem and benefits, staff professional development and training costs, staff technology, staff travel reimbursement, agency costs, materials for training.	South Central Calhoun CSD	\$600.00
Consulting Services	AEA Administrator Access	The cost to PLAEA varies dependent on the administrator delivering the training.	\$1200 full day, \$600 half day	The system explored consultant costs in both Nebraska and Wisconsin along with AEA staff per diem and benefits, staff professional development and training costs, staff technology, staff travel reimbursement, agency costs, materials for training.	South Central Calhoun CSD	\$600.00
Consulting Services	ED - Diverse Learners - English Learners	The cost to PLAEA varies dependent on the consultant delivering the training. Costs range from \$740 to \$954 per day.	\$900 full day, \$450 half day, \$225 quarter day	The system explored consultant costs in both Nebraska and Wisconsin along with AEA staff per diem and benefits, staff professional development and training costs, staff technology, staff travel reimbursement, agency costs, materials for training.	South Central Calhoun CSD	\$450.00
Consulting Services	ED - Diverse Learners - English Learners	The cost to PLAEA varies dependent on the consultant delivering the training. Costs range from \$740 to \$954 per day.	\$900 full day, \$450 half day, \$225 quarter day	The system explored consultant costs in both Nebraska and Wisconsin along with AEA staff per diem and benefits, staff professional development and training costs, staff technology, staff travel reimbursement, agency costs, materials for training.	South Central Calhoun CSD	\$450.00

Consulting Services	ED - Leadership & Infrastructure - Infrastructure (Para Support)	The cost to PLAEA varies dependent on the consultant delivering the training. Costs range from \$740 to \$954 per day.	\$900 full day, \$450 half day, \$225 quarter day	The system explored consultant costs in both Nebraska and Wisconsin along with AEA staff per diem and benefits, staff professional development and training costs, staff technology, staff travel reimbursement, agency costs, materials for training.	South Central Calhoun CSD	\$450.00
Consulting Services	ED - Leadership & Infrastructure - Infrastructure (Para Support)	The cost to PLAEA varies dependent on the consultant delivering the training. Costs range from \$740 to \$954 per day.	\$900 full day, \$450 half day, \$225 quarter day	The system explored consultant costs in both Nebraska and Wisconsin along with AEA staff per diem and benefits, staff professional development and training costs, staff technology, staff travel reimbursement, agency costs, materials for training.	South Central Calhoun CSD	\$450.00
Consulting Services	ED - Other/AEA Specific - Social Studies	The cost to PLAEA varies dependent on the consultant delivering the training. Costs range from \$740 to \$954 per day.	\$900 full day, \$450 half day, \$225 quarter day	The system explored consultant costs in both Nebraska and Wisconsin along with AEA staff per diem and benefits, staff professional development and training costs, staff technology, staff travel reimbursement, agency costs, materials for training.	South Central Calhoun CSD	\$450.00
Consulting Services	ED - Other/AEA Specific - Social Studies	The cost to PLAEA varies dependent on the consultant delivering the training. Costs range from \$740 to \$954 per day.	\$900 full day, \$450 half day, \$225 quarter day	The system explored consultant costs in both Nebraska and Wisconsin along with AEA staff per diem and benefits, staff professional development and training costs, staff technology, staff travel reimbursement, agency costs, materials for training.	South Central Calhoun CSD	\$900.00

Consulting Services	ED - SEBH - System Support	The cost to PLAEA varies dependent on the consultant delivering the training. Costs range from \$740 to \$954 per day.	\$900 full day, \$450 half day, \$225 quarter day	The system explored consultant costs in both Nebraska and Wisconsin along with AEA staff per diem and benefits, staff professional development and training costs, staff technology, staff travel reimbursement, agency costs, materials for training.	South Central Calhoun CSD	\$450.00
Consulting Services	ED - SEBH - System Support	The cost to PLAEA varies dependent on the consultant delivering the training. Costs range from \$740 to \$954 per day.	\$900 full day, \$450 half day, \$225 quarter day	The system explored consultant costs in both Nebraska and Wisconsin along with AEA staff per diem and benefits, staff professional development and training costs, staff technology, staff travel reimbursement, agency costs, materials for training.	South Central Calhoun CSD	\$450.00
Consulting Services	ED - SEBH - System Support	The cost to PLAEA varies dependent on the consultant delivering the training. Costs range from \$740 to \$954 per day.	\$900 full day, \$450 half day, \$225 quarter day	The system explored consultant costs in both Nebraska and Wisconsin along with AEA staff per diem and benefits, staff professional development and training costs, staff technology, staff travel reimbursement, agency costs, materials for training.	South Central Calhoun CSD	\$450.00
Consulting Services	ED - SEBH - System Support	The cost to PLAEA varies dependent on the consultant delivering the training. Costs range from \$740 to \$954 per day.	\$900 full day, \$450 half day, \$225 quarter day	The system explored consultant costs in both Nebraska and Wisconsin along with AEA staff per diem and benefits, staff professional development and training costs, staff technology, staff travel reimbursement, agency costs, materials for training.	South Central Calhoun CSD	\$450.00

Consulting Services	ED - Leadership & Infrastructure - Leadership Support	The cost to PLAEA varies dependent on the consultant delivering the training. Costs range from \$740 to \$954 per day.	\$900 full day, \$450 half day, \$225 quarter day	The system explored consultant costs in both Nebraska and Wisconsin along with AEA staff per diem and benefits, staff professional development and training costs, staff technology, staff travel reimbursement, agency costs, materials for training.	South Hamilton CSD	\$450.00
Consulting Services	ED - Leadership & Infrastructure - MTSS Supports	The cost to PLAEA varies dependent on the consultant delivering the training. Costs range from \$740 to \$954 per day.	\$900 full day, \$450 half day, \$225 quarter day	The system explored consultant costs in both Nebraska and Wisconsin along with AEA staff per diem and benefits, staff professional development and training costs, staff technology, staff travel reimbursement, agency costs, materials for training.	South Hamilton CSD	\$450.00
Consulting Services	ED - Literacy - Standards Work	The cost to PLAEA varies dependent on the consultant delivering the training. Costs range from \$740 to \$954 per day.	\$900 full day, \$450 half day, \$225 quarter day	The system explored consultant costs in both Nebraska and Wisconsin along with AEA staff per diem and benefits, staff professional development and training costs, staff technology, staff travel reimbursement, agency costs, materials for training.	South Hamilton CSD	\$450.00
Consulting Services	ED - Math - Standards Work	The cost to PLAEA varies dependent on the consultant delivering the training. Costs range from \$740 to \$954 per day.	\$900 full day, \$450 half day, \$225 quarter day	The system explored consultant costs in both Nebraska and Wisconsin along with AEA staff per diem and benefits, staff professional development and training costs, staff technology, staff travel reimbursement, agency costs, materials for training.	South Hamilton CSD	\$450.00

Consulting Services	ED - Math - Standards Work	The cost to PLAEA varies dependent on the consultant delivering the training. Costs range from \$740 to \$954 per day.	\$900 full day, \$450 half day, \$225 quarter day	The system explored consultant costs in both Nebraska and Wisconsin along with AEA staff per diem and benefits, staff professional development and training costs, staff technology, staff travel reimbursement, agency costs, materials for training.	South Hamilton CSD	\$225.00
Consulting Services	ED - SEBH - Instructional Practices	The cost to PLAEA varies dependent on the consultant delivering the training. Costs range from \$740 to \$954 per day.	\$900 full day, \$450 half day, \$225 quarter day	The system explored consultant costs in both Nebraska and Wisconsin along with AEA staff per diem and benefits, staff professional development and training costs, staff technology, staff travel reimbursement, agency costs, materials for training.	South Hamilton CSD	\$225.00
Consulting Services	ED - Diverse Learners - English Learners	The cost to PLAEA varies dependent on the consultant delivering the training. Costs range from \$740 to \$954 per day.	\$900 full day, \$450 half day, \$225 quarter day	The system explored consultant costs in both Nebraska and Wisconsin along with AEA staff per diem and benefits, staff professional development and training costs, staff technology, staff travel reimbursement, agency costs, materials for training.	South Hamilton CSD	\$450.00
Consulting Services	ED - Other/AEA Specific - Social Studies	The cost to PLAEA varies dependent on the consultant delivering the training. Costs range from \$740 to \$954 per day.	\$900 full day, \$450 half day, \$225 quarter day	The system explored consultant costs in both Nebraska and Wisconsin along with AEA staff per diem and benefits, staff professional development and training costs, staff technology, staff travel reimbursement, agency costs, materials for training.	South Hamilton CSD	\$450.00

Consulting Services	ED - Math - Intervention System	The cost to PLAEA varies dependent on the consultant delivering the training. Costs range from \$740 to \$954 per day.	\$900 full day, \$450 half day, \$225 quarter day	The system explored consultant costs in both Nebraska and Wisconsin along with AEA staff per diem and benefits, staff professional development and training costs, staff technology, staff travel reimbursement, agency costs, materials for training.	Southeast Valley CSD	\$450.00
Consulting Services	ED - Math - Standards Work	The cost to PLAEA varies dependent on the consultant delivering the training. Costs range from \$740 to \$954 per day.	\$900 full day, \$450 half day, \$225 quarter day	The system explored consultant costs in both Nebraska and Wisconsin along with AEA staff per diem and benefits, staff professional development and training costs, staff technology, staff travel reimbursement, agency costs, materials for training.	Southeast Valley CSD	\$450.00
Consulting Services	ED - Early Childhood - Instructional Practices	The cost to PLAEA varies dependent on the consultant delivering the training. Costs range from \$740 to \$954 per day.	\$900 full day, \$450 half day, \$225 quarter day	The system explored consultant costs in both Nebraska and Wisconsin along with AEA staff per diem and benefits, staff professional development and training costs, staff technology, staff travel reimbursement, agency costs, materials for training.	Spencer CSD	\$450.00
Consulting Services	ED - Early Childhood - System Supports	The cost to PLAEA varies dependent on the consultant delivering the training. Costs range from \$740 to \$954 per day.	\$900 full day, \$450 half day, \$225 quarter day	The system explored consultant costs in both Nebraska and Wisconsin along with AEA staff per diem and benefits, staff professional development and training costs, staff technology, staff travel reimbursement, agency costs, materials for training.	Spencer CSD	\$900.00

Consulting Services	ED - Leadership & Infrastructure - MTSS Supports	The cost to PLAEA varies dependent on the consultant delivering the training. Costs range from \$740 to \$954 per day.	\$900 full day, \$450 half day, \$225 quarter day	The system explored consultant costs in both Nebraska and Wisconsin along with AEA staff per diem and benefits, staff professional development and training costs, staff technology, staff travel reimbursement, agency costs, materials for training.	Spencer CSD	\$450.00
Consulting Services	ED - Math - HQIM	The cost to PLAEA varies dependent on the consultant delivering the training. Costs range from \$740 to \$954 per day.	\$900 full day, \$450 half day, \$225 quarter day	The system explored consultant costs in both Nebraska and Wisconsin along with AEA staff per diem and benefits, staff professional development and training costs, staff technology, staff travel reimbursement, agency costs, materials for training.	Spencer CSD	\$900.00
Consulting Services	ED - SEBH - System Support	The cost to PLAEA varies dependent on the consultant delivering the training. Costs range from \$740 to \$954 per day.	\$900 full day, \$450 half day, \$225 quarter day	The system explored consultant costs in both Nebraska and Wisconsin along with AEA staff per diem and benefits, staff professional development and training costs, staff technology, staff travel reimbursement, agency costs, materials for training.	Spencer CSD	\$900.00
Consulting Services	ED - Early Childhood - Instructional Practices	The cost to PLAEA varies dependent on the consultant delivering the training. Costs range from \$740 to \$954 per day.	\$900 full day, \$450 half day, \$225 quarter day	The system explored consultant costs in both Nebraska and Wisconsin along with AEA staff per diem and benefits, staff professional development and training costs, staff technology, staff travel reimbursement, agency costs, materials for training.	Spencer CSD	\$450.00

Consulting Services	ED - Early Childhood - Instructional Practices	The cost to PLAEA varies dependent on the consultant delivering the training. Costs range from \$740 to \$954 per day.	\$900 full day, \$450 half day, \$225 quarter day	The system explored consultant costs in both Nebraska and Wisconsin along with AEA staff per diem and benefits, staff professional development and training costs, staff technology, staff travel reimbursement, agency costs, materials for training.	Spencer CSD	\$450.00
Consulting Services	ED - Diverse Learners - English Learners	The cost to PLAEA varies dependent on the consultant delivering the training. Costs range from \$740 to \$954 per day.	\$900 full day, \$450 half day, \$225 quarter day	The system explored consultant costs in both Nebraska and Wisconsin along with AEA staff per diem and benefits, staff professional development and training costs, staff technology, staff travel reimbursement, agency costs, materials for training.	Webster City CSD	\$900.00
Consulting Services	ED - Other/AEA Specific - Social Studies	The cost to PLAEA varies dependent on the consultant delivering the training. Costs range from \$740 to \$954 per day.	\$900 full day, \$450 half day, \$225 quarter day	The system explored consultant costs in both Nebraska and Wisconsin along with AEA staff per diem and benefits, staff professional development and training costs, staff technology, staff travel reimbursement, agency costs, materials for training.	Webster City CSD	\$450.00

Science Kits	<p>FOSS (Full Option Science System) Science Kits are comprehensive, hands-on science education tools designed to support inquiry-based learning for students in grades K-8. They include materials, lesson plans, and assessments that align with national science standards, encouraging exploration and critical thinking in topics like life, earth, and physical sciences. With a focus on active engagement, FOSS Science Kits aim to foster curiosity and build foundational scientific skills in learners.</p>	<p>The cost varies slightly to the AEA per kit but includes the physical kit itself and the license and ability to provide PD around their use and resupply and re-use of kits.</p>	<p>The kits range from: \$39-\$230</p>	<p>The cost per kit, the cost for the license and ability to provide PD around their use, the cost for the physical materials to resupply the kits and the cost for staffing to run the program and maintain the kits.</p>	Albert City-Truesdale CSD	\$2,068.67
Science Kits	<p>FOSS (Full Option Science System) Science Kits are comprehensive, hands-on science education tools designed to support inquiry-based learning for students in grades K-8. They include materials, lesson plans, and assessments that align with national science standards, encouraging exploration and critical thinking in topics like life, earth, and physical sciences. With a focus on active engagement, FOSS Science Kits aim to foster curiosity and build foundational scientific skills in learners.</p>	<p>The cost varies slightly to the AEA per kit but includes the physical kit itself and the license and ability to provide PD around their use and resupply and re-use of kits.</p>	<p>The kits range from: \$39-\$230</p>	<p>The cost per kit, the cost for the license and ability to provide PD around their use, the cost for the physical materials to resupply the kits and the cost for staffing to run the program and maintain the kits.</p>	Clarion-Goldfield-Dows CSD	\$2,550.67

Science Kits	FOSS (Full Option Science System) Science Kits are comprehensive, hands-on science education tools designed to support inquiry-based learning for students in grades K-8. They include materials, lesson plans, and assessments that align with national science standards, encouraging exploration and critical thinking in topics like life, earth, and physical sciences. With a focus on active engagement, FOSS Science Kits aim to foster curiosity and build foundational scientific skills in learners.	The cost varies slightly to the AEA per kit but includes the physical kit itself and the license and ability to provide PD around their use and resupply and re-use of kits.	The kits range from: \$39-\$230	The cost per kit, the cost for the license and ability to provide PD around their use, the cost for the physical materials to resupply the kits and the cost for staffing to run the program and maintain the kits.	Stratford CSD	\$765.33
Intervention Bank Access	Access to our intervention bank allows educators to have fingertip access to interventions and associated resources.	The cost to PLAEA varies dependent on the consultant updating the resources and links which happens annually . Costs range from \$740 to \$954 per day.	\$500 for annual access	Annual maintenance to update resources and all associated links to all interventions included in the document requires staff per diem and benefits.	Humboldt CSD	\$500.00
Intervention Bank Access	Access to our intervention bank allows educators to have fingertip access to interventions and associated resources.	The cost to PLAEA varies dependent on the consultant updating the resources and links which happens annually . Costs range from \$740 to \$954 per day.	\$500 for annual access	Annual maintenance to update resources and all associated links to all interventions included in the document requires staff per diem and benefits.	Clay Central-Everly CSD	\$500.00
Intervention Bank Access	Access to our intervention bank allows educators to have fingertip access to interventions and associated resources.	The cost to PLAEA varies dependent on the consultant updating the resources and links which happens annually . Costs range from \$740 to \$954 per day.	\$500 for annual access	Annual maintenance to update resources and all associated links to all interventions included in the document requires staff per diem and benefits.	Twin Rivers CSD	\$500.00

Intervention Bank Access	Access to our intervention bank allows educators to have fingertip access to interventions and associated resources.	The cost to PLAEA varies dependent on the consultant updating the resources and links which happens annually . Costs range from \$740 to \$954 per day.	\$500 for annual access	Annual maintenance to update resources and all associated links to all interventions included in the document requires staff per diem and benefits.	Webster City CSD	\$500.00
--------------------------	--	---	-------------------------	---	------------------	----------

Professional Development Services

Service/Program Name	Detailed Description of Service/Program (~150 words)	Cost to AEA Per Unit	Cost to Customer Per Unit	Customer Cost Rationale/Methodology	Name of LEA/Nonpublic School Purchasing Service/Program	Total LEA/Nonpublic School Purchase Amount of Each Service/Program
-----------------------------	---	-----------------------------	----------------------------------	--	--	---

<p>LETRS Vol. 2</p>	<p>LETRS Volume 2 is a professional development resource designed to deepen educators' understanding of effective literacy instruction. Building on the foundational knowledge introduced in Volume 1, Volume 2 focuses on advanced topics such as vocabulary, language comprehension, and written expression. It delves into the critical role of morphology, syntax, and text structure in reading comprehension, while providing strategies for supporting diverse learners, including those with dyslexia and other reading challenges. LETRS Volume 2 equips teachers with evidence-based practices to enhance student outcomes and foster long-term literacy success, emphasizing the integration of theory and practical application in classroom settings.</p>	<p>\$27,016 initial cost to AEA plus ongoing daily staff cost to deliver the professional development. The cost to PLAEA varies dependent on the consultant delivering the training. Costs range from \$740 to \$954 per day.</p>	<p>\$1500/day</p>	<p>Materials Cost, Royalties/addl. fees, Train the Trainer Fees, Recertification of Trainers, Staff Facilitator Rate, Annual Membership Fee, Staff Travel expenses for training, Staff per diem during training</p>	<p>Clarion-Goldfield-Dows CSD</p>	<p>\$6,000.00</p>
---------------------	--	---	-------------------	---	-----------------------------------	-------------------

<p>LETRS Vol. 1</p>	<p>LETRS Volume 1 focuses on the foundations of literacy instruction, designed to equip educators with a deep understanding of the science of reading. Developed by Louisa Moats and Carol Tolman, this professional learning resource emphasizes the cognitive processes involved in learning to read and the essential components of effective literacy teaching. It covers phonological awareness, phonics, and the structure of the English language, providing practical strategies to address diverse learner needs. LETRS Volume 1 serves as a guide for educators to implement evidence-based practices that support reading development and address literacy challenges in the classroom.</p>	<p>\$27,016 initial cost to AEA plus ongoing daily staff cost to deliver the professional development. The cost to PLAEA varies dependent on the consultant delivering the training. Costs range from \$740 to \$954 per day.</p>	<p>\$1500/day</p>	<p>Materials Cost, Royalties/addl. fees, Train the Trainer Fees, Recertification of Trainers, Staff Facilitator Rate, Annual Membership Fee, Staff Travel expenses for training, Staff per diem during training</p>	<p>Paton-Churdan CSD</p>	<p>\$3,000.00</p>
---------------------	--	---	-------------------	---	--------------------------	-------------------

LETRS Vol. 2	<p>LETRS Volume 2 is a professional development resource designed to deepen educators' understanding of effective literacy instruction. Building on the foundational knowledge introduced in Volume 1, Volume 2 focuses on advanced topics such as vocabulary, language comprehension, and written expression. It delves into the critical role of morphology, syntax, and text structure in reading comprehension, while providing strategies for supporting diverse learners, including those with dyslexia and other reading challenges. LETRS Volume 2 equips teachers with evidence-based practices to enhance student outcomes and foster long-term literacy success, emphasizing the integration of theory and practical application in classroom settings.</p>	<p>\$27,016 initial cost to AEA plus ongoing daily staff cost to deliver the professional development. The cost to PLAEA varies dependent on the consultant delivering the training. Costs range from \$740 to \$954 per day.</p>	<p>\$1500/day</p>	<p>Materials Cost, Royalties/addl. fees, Train the Trainer Fees, Recertification of Trainers, Staff Facilitator Rate, Annual Membership Fee, Staff Travel expenses for training, Staff per diem during training</p>	<p>Paton-Churdan CSD</p>	<p>\$3,000.00</p>
--------------	--	---	-------------------	---	--------------------------	-------------------

LETRS Vol. 2	<p>LETRS Volume 2 is a professional development resource designed to deepen educators' understanding of effective literacy instruction. Building on the foundational knowledge introduced in Volume 1, Volume 2 focuses on advanced topics such as vocabulary, language comprehension, and written expression. It delves into the critical role of morphology, syntax, and text structure in reading comprehension, while providing strategies for supporting diverse learners, including those with dyslexia and other reading challenges. LETRS Volume 2 equips teachers with evidence-based practices to enhance student outcomes and foster long-term literacy success, emphasizing the integration of theory and practical application in classroom settings.</p>	<p>\$27,016 initial cost to AEA plus ongoing daily staff cost to deliver the professional development. The cost to PLAEA varies dependent on the consultant delivering the training. Costs range from \$740 to \$954 per day.</p>	<p>\$1500/day</p>	<p>Materials Cost, Royalties/addl. fees, Train the Trainer Fees, Recertification of Trainers, Staff Facilitator Rate, Annual Membership Fee, Staff Travel expenses for training, Staff per diem during training</p>	<p>West Bend-Mallard CSD</p>	<p>\$3,000.00</p>
--------------	--	---	-------------------	---	------------------------------	-------------------

LETRS Vol. 2	<p>LETRS Volume 2 is a professional development resource designed to deepen educators' understanding of effective literacy instruction. Building on the foundational knowledge introduced in Volume 1, Volume 2 focuses on advanced topics such as vocabulary, language comprehension, and written expression. It delves into the critical role of morphology, syntax, and text structure in reading comprehension, while providing strategies for supporting diverse learners, including those with dyslexia and other reading challenges. LETRS Volume 2 equips teachers with evidence-based practices to enhance student outcomes and foster long-term literacy success, emphasizing the integration of theory and practical application in classroom settings.</p>	<p>\$27,016 initial cost to AEA plus ongoing daily staff cost to deliver the professional development. The cost to PLAEA varies dependent on the consultant delivering the training. Costs range from \$740 to \$954 per day.</p>	<p>\$1500/day</p>	<p>Materials Cost, Royalties/addl. fees, Train the Trainer Fees, Recertification of Trainers, Staff Facilitator Rate, Annual Membership Fee, Staff Travel expenses for training, Staff per diem during training</p>	<p>Algona CSD</p>	<p>\$3,000.00</p>
--------------	--	---	-------------------	---	-------------------	-------------------

<p>LETRS Vol. 1</p>	<p>LETRS Volume 1 focuses on the foundations of literacy instruction, designed to equip educators with a deep understanding of the science of reading. Developed by Louisa Moats and Carol Tolman, this professional learning resource emphasizes the cognitive processes involved in learning to read and the essential components of effective literacy teaching. It covers phonological awareness, phonics, and the structure of the English language, providing practical strategies to address diverse learner needs. LETRS Volume 1 serves as a guide for educators to implement evidence-based practices that support reading development and address literacy challenges in the classroom.</p>	<p>\$27,016 initial cost to AEA plus ongoing daily staff cost to deliver the professional development. The cost to PLAEA varies dependent on the consultant delivering the training. Costs range from \$740 to \$954 per day.</p>	<p>\$1500/day</p>	<p>Materials Cost, Royalties/addl. fees, Train the Trainer Fees, Recertification of Trainers, Staff Facilitator Rate, Annual Membership Fee, Staff Travel expenses for training, Staff per diem during training</p>	<p>Manson-Northwest Webster CSD</p>	<p>\$750.00</p>
---------------------	--	---	-------------------	---	---	-----------------

CPI	<p>Crisis Prevention Institute (CPI) training in schools is a program designed to equip educators and staff with strategies to prevent and de-escalate disruptive or potentially harmful behaviors. The training emphasizes proactive techniques to maintain a safe and supportive learning environment while preserving the dignity and respect of all individuals involved. CPI focuses on recognizing early warning signs, effective communication, and non-violent crisis intervention methods. It also includes strategies for safely managing physical aggression when necessary, with an emphasis on reducing the need for physical intervention. By fostering a culture of empathy, collaboration, and safety, CPI helps schools address behavioral challenges while prioritizing student and staff well-being.</p>	<p>\$9,540 initial cost to AEA plus ongoing daily staff cost to deliver the professional development. The cost to PLAEA varies dependent on the consultant delivering the training. Costs range from \$740 to \$954 per day.</p>	<p>\$1500/day + materials</p>	<p>Materials Cost, Royalties/addl. fees, Train the Trainer Fees, Recertification of Trainers, Staff Facilitator Rate, Annual Membership Fee, Staff Travel expenses for training, Staff per diem during training</p>	<p>Algona CSD</p>	<p>\$3,840.71</p>
-----	---	--	-------------------------------	---	-------------------	-------------------

CPI	<p>Crisis Prevention Institute (CPI) training in schools is a program designed to equip educators and staff with strategies to prevent and de-escalate disruptive or potentially harmful behaviors. The training emphasizes proactive techniques to maintain a safe and supportive learning environment while preserving the dignity and respect of all individuals involved. CPI focuses on recognizing early warning signs, effective communication, and non-violent crisis intervention methods. It also includes strategies for safely managing physical aggression when necessary, with an emphasis on reducing the need for physical intervention. By fostering a culture of empathy, collaboration, and safety, CPI helps schools address behavioral challenges while prioritizing student and staff well-being.</p>	<p>\$9,540 initial cost to AEA plus ongoing daily staff cost to deliver the professional development. The cost to PLAEA varies dependent on the consultant delivering the training. Costs range from \$740 to \$954 per day.</p>	<p>\$1500/day + materials</p>	<p>Materials Cost, Royalties/addl. fees, Train the Trainer Fees, Recertification of Trainers, Staff Facilitator Rate, Annual Membership Fee, Staff Travel expenses for training, Staff per diem during training</p>	<p>Schaller-Crestland CSD</p>	<p>\$2,021.82</p>
-----	---	--	-------------------------------	---	-------------------------------	-------------------

CPI	<p>Crisis Prevention Institute (CPI) training in schools is a program designed to equip educators and staff with strategies to prevent and de-escalate disruptive or potentially harmful behaviors. The training emphasizes proactive techniques to maintain a safe and supportive learning environment while preserving the dignity and respect of all individuals involved. CPI focuses on recognizing early warning signs, effective communication, and non-violent crisis intervention methods. It also includes strategies for safely managing physical aggression when necessary, with an emphasis on reducing the need for physical intervention. By fostering a culture of empathy, collaboration, and safety, CPI helps schools address behavioral challenges while prioritizing student and staff well-being.</p>	<p>\$9,540 initial cost to AEA plus ongoing daily staff cost to deliver the professional development. The cost to PLAEA varies dependent on the consultant delivering the training. Costs range from \$740 to \$954 per day.</p>	<p>\$1500/day + materials</p>	<p>Materials Cost, Royalties/addl. fees, Train the Trainer Fees, Recertification of Trainers, Staff Facilitator Rate, Annual Membership Fee, Staff Travel expenses for training, Staff per diem during training</p>	<p>Gilmore City-Bradgate CSD</p>	<p>\$1,644.95</p>
-----	---	--	-------------------------------	---	----------------------------------	-------------------

<p>Paraeducator Generalist Certification Program Course I: Introduction and Foundations</p>	<p>This is the first of three courses required for the Iowa Paraeducator Generalist Certification available through the Iowa Board of Educational Examiners. It is strongly encouraged that participants take foundations (course 1) before courses 2 and 3. This course is the introduction to the necessary skills paraeducators will need to be prepared to meet the demands of their supportive roles within a classroom. Included in this course are the foundational skills for working as a paraeducator in Iowa schools and essential skills for providing ethical and professional practice.</p>	<p>The cost to PLAEA varies dependent on the consultant delivering the training. Costs range from \$740 to \$954 per day.</p>	<p>\$900/day</p>	<p>Materials Cost, Train the Trainer Fees, Recertification of Trainers, Staff Facilitator Rate, Staff Travel expenses for training, Staff per diem during training</p>	<p>Alta-Aurelia CSD</p>	<p>\$3,600.00</p>
---	---	---	------------------	--	-------------------------	-------------------

<p>Paraeducator Generalist Certification Program Course I: Introduction and Foundations</p>	<p>This is the first of three courses required for the Iowa Paraeducator Generalist Certification available through the Iowa Board of Educational Examiners. It is strongly encouraged that participants take foundations (course 1) before courses 2 and 3. This course is the introduction to the necessary skills paraeducators will need to be prepared to meet the demands of their supportive roles within a classroom. Included in this course are the foundational skills for working as a paraeducator in Iowa schools and essential skills for providing ethical and professional practice.</p>	<p>The cost to PLAEA varies dependent on the consultant delivering the training. Costs range from \$740 to \$954 per day.</p>	<p>\$900/day</p>	<p>Materials Cost, Train the Trainer Fees, Recertification of Trainers, Staff Facilitator Rate, Staff Travel expenses for training, Staff per diem during training</p>	<p>South Hamilton CSD</p>	<p>\$2,250.00</p>
---	---	---	------------------	--	---------------------------	-------------------

<p>LETRS Vol. 1</p>	<p>LETRS Volume 1 focuses on the foundations of literacy instruction, designed to equip educators with a deep understanding of the science of reading. Developed by Louisa Moats and Carol Tolman, this professional learning resource emphasizes the cognitive processes involved in learning to read and the essential components of effective literacy teaching. It covers phonological awareness, phonics, and the structure of the English language, providing practical strategies to address diverse learner needs. LETRS Volume 1 serves as a guide for educators to implement evidence-based practices that support reading development and address literacy challenges in the classroom.</p>	<p>\$27,016 initial cost to AEA plus ongoing daily staff cost to deliver the professional development. Costs range from \$740 to \$954 per day.</p>	<p>\$200/unit</p>	<p>Materials Cost, Royalties/addl. fees, Train the Trainer Fees, Recertification of Trainers, Staff Facilitator Rate, Annual Membership Fee, Staff Travel expenses for training, Staff per diem during training</p>	<p>West Bend-Mallard CSD</p>	<p>\$2,400.00</p>
---------------------	--	---	-------------------	---	------------------------------	-------------------

<p>LETRS Vol. 1</p>	<p>LETRS Volume 1 focuses on the foundations of literacy instruction, designed to equip educators with a deep understanding of the science of reading. Developed by Louisa Moats and Carol Tolman, this professional learning resource emphasizes the cognitive processes involved in learning to read and the essential components of effective literacy teaching. It covers phonological awareness, phonics, and the structure of the English language, providing practical strategies to address diverse learner needs. LETRS Volume 1 serves as a guide for educators to implement evidence-based practices that support reading development and address literacy challenges in the classroom.</p>	<p>\$27,016 initial cost to AEA plus ongoing daily staff cost to deliver the professional development. Costs range from \$740 to \$954 per day.</p>	<p>\$200/unit</p>	<p>Materials Cost, Royalties/addl. fees, Train the Trainer Fees, Recertification of Trainers, Staff Facilitator Rate, Annual Membership Fee, Staff Travel expenses for training, Staff per diem during training</p>	<p>Spencer CSD</p>	<p>\$600.00</p>
---------------------	--	---	-------------------	---	--------------------	-----------------

CPI	<p>Crisis Prevention Institute (CPI) training in schools is a program designed to equip educators and staff with strategies to prevent and de-escalate disruptive or potentially harmful behaviors. The training emphasizes proactive techniques to maintain a safe and supportive learning environment while preserving the dignity and respect of all individuals involved. CPI focuses on recognizing early warning signs, effective communication, and non-violent crisis intervention methods. It also includes strategies for safely managing physical aggression when necessary, with an emphasis on reducing the need for physical intervention. By fostering a culture of empathy, collaboration, and safety, CPI helps schools address behavioral challenges while prioritizing student and staff well-being.</p>	<p>\$9,540 initial cost to AEA plus ongoing daily staff cost to deliver the professional development. Cost to AEA varies as it depends on the daily compensation of individual PLAEA Staff. Costs range from \$740 to \$954 per day</p>	<p>\$228.99 (\$200/day + materials)</p>	<p>Materials Cost, Royalties/addl. fees, Train the Trainer Fees, Recertification of Trainers, Staff Facilitator Rate, Annual Membership Fee, Staff Travel expenses for training, Staff per diem during training</p>	<p>Clarion-Goldfield-Dows CSD</p>	<p>\$1,144.95</p>
-----	---	---	---	---	---------------------------------------	-------------------

CPI	<p>Crisis Prevention Institute (CPI) training in schools is a program designed to equip educators and staff with strategies to prevent and de-escalate disruptive or potentially harmful behaviors. The training emphasizes proactive techniques to maintain a safe and supportive learning environment while preserving the dignity and respect of all individuals involved. CPI focuses on recognizing early warning signs, effective communication, and non-violent crisis intervention methods. It also includes strategies for safely managing physical aggression when necessary, with an emphasis on reducing the need for physical intervention. By fostering a culture of empathy, collaboration, and safety, CPI helps schools address behavioral challenges while prioritizing student and staff well-being.</p>	<p>\$9,540 initial cost to AEA plus ongoing daily staff cost to deliver the professional development. Cost to AEA varies as it depends on the daily compensation of individual PLAEA Staff. Costs range from \$740 to \$954 per day</p>	<p>\$228.99 (\$200/day + materials)</p>	<p>Materials Cost, Royalties/addl. fees, Train the Trainer Fees, Recertification of Trainers, Staff Facilitator Rate, Annual Membership Fee, Staff Travel expenses for training, Staff per diem during training</p>	<p>North Kossuth CSD</p>	<p>\$228.99</p>
-----	---	---	---	---	--------------------------	-----------------

CPI	<p>Crisis Prevention Institute (CPI) training in schools is a program designed to equip educators and staff with strategies to prevent and de-escalate disruptive or potentially harmful behaviors. The training emphasizes proactive techniques to maintain a safe and supportive learning environment while preserving the dignity and respect of all individuals involved. CPI focuses on recognizing early warning signs, effective communication, and non-violent crisis intervention methods. It also includes strategies for safely managing physical aggression when necessary, with an emphasis on reducing the need for physical intervention. By fostering a culture of empathy, collaboration, and safety, CPI helps schools address behavioral challenges while prioritizing student and staff well-being.</p>	<p>\$9,540 initial cost to AEA plus ongoing daily staff cost to deliver the professional development. Cost to AEA varies as it depends on the daily compensation of individual PLAEA Staff. Costs range from \$740 to \$954 per day</p>	<p>\$228.99 (\$200/day + materials)</p>	<p>Materials Cost, Royalties/addl. fees, Train the Trainer Fees, Recertification of Trainers, Staff Facilitator Rate, Annual Membership Fee, Staff Travel expenses for training, Staff per diem during training</p>	<p>Algona CSD</p>	<p>\$1,144.95</p>
-----	---	---	---	---	-------------------	-------------------

CPI	<p>Crisis Prevention Institute (CPI) training in schools is a program designed to equip educators and staff with strategies to prevent and de-escalate disruptive or potentially harmful behaviors. The training emphasizes proactive techniques to maintain a safe and supportive learning environment while preserving the dignity and respect of all individuals involved. CPI focuses on recognizing early warning signs, effective communication, and non-violent crisis intervention methods. It also includes strategies for safely managing physical aggression when necessary, with an emphasis on reducing the need for physical intervention. By fostering a culture of empathy, collaboration, and safety, CPI helps schools address behavioral challenges while prioritizing student and staff well-being.</p>	<p>\$9,540 initial cost to AEA plus ongoing daily staff cost to deliver the professional development. Cost to AEA varies as it depends on the daily compensation of individual PLAEA Staff. Costs range from \$740 to \$954 per day</p>	<p>\$228.99 (\$200/day + materials)</p>	<p>Materials Cost, Royalties/addl. fees, Train the Trainer Fees, Recertification of Trainers, Staff Facilitator Rate, Annual Membership Fee, Staff Travel expenses for training, Staff per diem during training</p>	<p>Humboldt CSD</p>	<p>\$228.99</p>
-----	---	---	---	---	---------------------	-----------------

CPI	<p>Crisis Prevention Institute (CPI) training in schools is a program designed to equip educators and staff with strategies to prevent and de-escalate disruptive or potentially harmful behaviors. The training emphasizes proactive techniques to maintain a safe and supportive learning environment while preserving the dignity and respect of all individuals involved. CPI focuses on recognizing early warning signs, effective communication, and non-violent crisis intervention methods. It also includes strategies for safely managing physical aggression when necessary, with an emphasis on reducing the need for physical intervention. By fostering a culture of empathy, collaboration, and safety, CPI helps schools address behavioral challenges while prioritizing student and staff well-being.</p>	<p>\$9,540 initial cost to AEA plus ongoing daily staff cost to deliver the professional development. Cost to AEA varies as it depends on the daily compensation of individual PLAEA Staff. Costs range from \$740 to \$954 per day</p>	<p>\$228.99 (\$200/day + materials)</p>	<p>Materials Cost, Royalties/addl. fees, Train the Trainer Fees, Recertification of Trainers, Staff Facilitator Rate, Annual Membership Fee, Staff Travel expenses for training, Staff per diem during training</p>	<p>Clay Central-Everly CSD</p>	<p>\$457.98</p>
-----	---	---	---	---	--------------------------------	-----------------

CPI	<p>Crisis Prevention Institute (CPI) training in schools is a program designed to equip educators and staff with strategies to prevent and de-escalate disruptive or potentially harmful behaviors. The training emphasizes proactive techniques to maintain a safe and supportive learning environment while preserving the dignity and respect of all individuals involved. CPI focuses on recognizing early warning signs, effective communication, and non-violent crisis intervention methods. It also includes strategies for safely managing physical aggression when necessary, with an emphasis on reducing the need for physical intervention. By fostering a culture of empathy, collaboration, and safety, CPI helps schools address behavioral challenges while prioritizing student and staff well-being.</p>	<p>\$9,540 initial cost to AEA plus ongoing daily staff cost to deliver the professional development. Cost to AEA varies as it depends on the daily compensation of individual PLAEA Staff. Costs range from \$740 to \$954 per day</p>	<p>\$228.99 (\$200/day + materials)</p>	<p>Materials Cost, Royalties/addl. fees, Train the Trainer Fees, Recertification of Trainers, Staff Facilitator Rate, Annual Membership Fee, Staff Travel expenses for training, Staff per diem during training</p>	<p>Albert City-Truesdale CSD</p>	<p>\$457.98</p>
-----	---	---	---	---	----------------------------------	-----------------

CPI	<p>Crisis Prevention Institute (CPI) training in schools is a program designed to equip educators and staff with strategies to prevent and de-escalate disruptive or potentially harmful behaviors. The training emphasizes proactive techniques to maintain a safe and supportive learning environment while preserving the dignity and respect of all individuals involved. CPI focuses on recognizing early warning signs, effective communication, and non-violent crisis intervention methods. It also includes strategies for safely managing physical aggression when necessary, with an emphasis on reducing the need for physical intervention. By fostering a culture of empathy, collaboration, and safety, CPI helps schools address behavioral challenges while prioritizing student and staff well-being.</p>	<p>\$9,540 initial cost to AEA plus ongoing daily staff cost to deliver the professional development. Cost to AEA varies as it depends on the daily compensation of individual PLAEA Staff. Costs range from \$740 to \$954 per day</p>	<p>\$228.99 (\$200/day + materials)</p>	<p>Materials Cost, Royalties/addl. fees, Train the Trainer Fees, Recertification of Trainers, Staff Facilitator Rate, Annual Membership Fee, Staff Travel expenses for training, Staff per diem during training</p>	<p>South Central Calhoun CSD</p>	<p>\$228.99</p>
-----	---	---	---	---	----------------------------------	-----------------

CPI	<p>Crisis Prevention Institute (CPI) training in schools is a program designed to equip educators and staff with strategies to prevent and de-escalate disruptive or potentially harmful behaviors. The training emphasizes proactive techniques to maintain a safe and supportive learning environment while preserving the dignity and respect of all individuals involved. CPI focuses on recognizing early warning signs, effective communication, and non-violent crisis intervention methods. It also includes strategies for safely managing physical aggression when necessary, with an emphasis on reducing the need for physical intervention. By fostering a culture of empathy, collaboration, and safety, CPI helps schools address behavioral challenges while prioritizing student and staff well-being.</p>	<p>\$9,540 initial cost to AEA plus ongoing daily staff cost to deliver the professional development. Cost to AEA varies as it depends on the daily compensation of individual PLAEA Staff. Costs range from \$740 to \$954 per day</p>	<p>\$228.99 (\$200/day + materials)</p>	<p>Materials Cost, Royalties/addl. fees, Train the Trainer Fees, Recertification of Trainers, Staff Facilitator Rate, Annual Membership Fee, Staff Travel expenses for training, Staff per diem during training</p>	<p>East Sac County CSD</p>	<p>\$228.99</p>
-----	---	---	---	---	----------------------------	-----------------

CPI	<p>Crisis Prevention Institute (CPI) training in schools is a program designed to equip educators and staff with strategies to prevent and de-escalate disruptive or potentially harmful behaviors. The training emphasizes proactive techniques to maintain a safe and supportive learning environment while preserving the dignity and respect of all individuals involved. CPI focuses on recognizing early warning signs, effective communication, and non-violent crisis intervention methods. It also includes strategies for safely managing physical aggression when necessary, with an emphasis on reducing the need for physical intervention. By fostering a culture of empathy, collaboration, and safety, CPI helps schools address behavioral challenges while prioritizing student and staff well-being.</p>	<p>\$9,540 initial cost to AEA plus ongoing daily staff cost to deliver the professional development. Cost to AEA varies as it depends on the daily compensation of individual PLAEA Staff. Costs range from \$740 to \$954 per day</p>	<p>\$228.99 (\$200/day + materials)</p>	<p>Materials Cost, Royalties/addl. fees, Train the Trainer Fees, Recertification of Trainers, Staff Facilitator Rate, Annual Membership Fee, Staff Travel expenses for training, Staff per diem during training</p>	<p>North Union CSD</p>	<p>\$1,144.95</p>
-----	---	---	---	---	------------------------	-------------------

CPI	<p>Crisis Prevention Institute (CPI) training in schools is a program designed to equip educators and staff with strategies to prevent and de-escalate disruptive or potentially harmful behaviors. The training emphasizes proactive techniques to maintain a safe and supportive learning environment while preserving the dignity and respect of all individuals involved. CPI focuses on recognizing early warning signs, effective communication, and non-violent crisis intervention methods. It also includes strategies for safely managing physical aggression when necessary, with an emphasis on reducing the need for physical intervention. By fostering a culture of empathy, collaboration, and safety, CPI helps schools address behavioral challenges while prioritizing student and staff well-being.</p>	<p>\$9,540 initial cost to AEA plus ongoing daily staff cost to deliver the professional development. Cost to AEA varies as it depends on the daily compensation of individual PLAEA Staff. Costs range from \$740 to \$954 per day</p>	<p>\$228.99 (\$200/day + materials)</p>	<p>Materials Cost, Royalties/addl. fees, Train the Trainer Fees, Recertification of Trainers, Staff Facilitator Rate, Annual Membership Fee, Staff Travel expenses for training, Staff per diem during training</p>	<p>Gilmore City-Bradgate CSD</p>	<p>\$228.99</p>
-----	---	---	---	---	--------------------------------------	-----------------

CPI	<p>Crisis Prevention Institute (CPI) training in schools is a program designed to equip educators and staff with strategies to prevent and de-escalate disruptive or potentially harmful behaviors. The training emphasizes proactive techniques to maintain a safe and supportive learning environment while preserving the dignity and respect of all individuals involved. CPI focuses on recognizing early warning signs, effective communication, and non-violent crisis intervention methods. It also includes strategies for safely managing physical aggression when necessary, with an emphasis on reducing the need for physical intervention. By fostering a culture of empathy, collaboration, and safety, CPI helps schools address behavioral challenges while prioritizing student and staff well-being.</p>	<p>\$9,540 initial cost to AEA plus ongoing daily staff cost to deliver the professional development. Cost to AEA varies as it depends on the daily compensation of individual PLAEA Staff. Costs range from \$740 to \$954 per day</p>	<p>\$228.99 (\$200/day + materials)</p>	<p>Materials Cost, Royalties/addl. fees, Train the Trainer Fees, Recertification of Trainers, Staff Facilitator Rate, Annual Membership Fee, Staff Travel expenses for training, Staff per diem during training</p>	<p>Des Moines Public</p>	<p>\$228.99</p>
-----	---	---	---	---	--------------------------	-----------------

CPI	<p>Crisis Prevention Institute (CPI) training in schools is a program designed to equip educators and staff with strategies to prevent and de-escalate disruptive or potentially harmful behaviors. The training emphasizes proactive techniques to maintain a safe and supportive learning environment while preserving the dignity and respect of all individuals involved. CPI focuses on recognizing early warning signs, effective communication, and non-violent crisis intervention methods. It also includes strategies for safely managing physical aggression when necessary, with an emphasis on reducing the need for physical intervention. By fostering a culture of empathy, collaboration, and safety, CPI helps schools address behavioral challenges while prioritizing student and staff well-being.</p>	<p>\$9,540 initial cost to AEA plus ongoing daily staff cost to deliver the professional development. Cost to AEA varies as it depends on the daily compensation of individual PLAEA Staff. Costs range from \$740 to \$954 per day</p>	<p>\$228.99 (\$200/day + materials)</p>	<p>Materials Cost, Royalties/addl. fees, Train the Trainer Fees, Recertification of Trainers, Staff Facilitator Rate, Annual Membership Fee, Staff Travel expenses for training, Staff per diem during training</p>	<p>Laurens-Marathon CSD</p>	<p>\$228.99</p>
-----	---	---	---	---	-----------------------------	-----------------

CPI	<p>Crisis Prevention Institute (CPI) training in schools is a program designed to equip educators and staff with strategies to prevent and de-escalate disruptive or potentially harmful behaviors. The training emphasizes proactive techniques to maintain a safe and supportive learning environment while preserving the dignity and respect of all individuals involved. CPI focuses on recognizing early warning signs, effective communication, and non-violent crisis intervention methods. It also includes strategies for safely managing physical aggression when necessary, with an emphasis on reducing the need for physical intervention. By fostering a culture of empathy, collaboration, and safety, CPI helps schools address behavioral challenges while prioritizing student and staff well-being.</p>	<p>\$9,540 initial cost to AEA plus ongoing daily staff cost to deliver the professional development. Cost to AEA varies as it depends on the daily compensation of individual PLAEA Staff. Costs range from \$740 to \$954 per day</p>	<p>\$228.99 (\$200/day + materials)</p>	<p>Materials Cost, Royalties/addl. fees, Train the Trainer Fees, Recertification of Trainers, Staff Facilitator Rate, Annual Membership Fee, Staff Travel expenses for training, Staff per diem during training</p>	<p>Manson-Northwest Webster CSD</p>	<p>\$457.98</p>
Panorama Overview	<p>Overview of Panorama for Administrators/Instructional Leaders</p>	<p>Cost to AEA varies as it depends on the daily compensation of individual PLAEA Staff. Costs range from \$740 to \$954 per day. The generalized cost would be PLAEA staff daily rate times the number of days of the training plus preparation and follow up.</p>	<p>\$75</p>	<p>Materials Cost, Royalties/addl. fees, Train the Trainer Fees, Recertification of Trainers, Staff Facilitator Rate, Annual Membership Fee, Staff Travel expenses for training, Staff per diem during training</p>	<p>Sioux Central CSD</p>	<p>\$225.00</p>

Panorama Overview	Overview of Panorama for Administrators/Instructional Leaders	Cost to AEA varies as it depends on the daily compensation of individual PLAEA Staff. Costs range from \$740 to \$954 per day. The generalized cost would be PLAEA staff daily rate times the number of days of the training plus preparation and follow up.	\$75	Materials Cost, Royalties/addl. fees, Train the Trainer Fees, Recertification of Trainers, Staff Facilitator Rate, Annual Membership Fee, Staff Travel expenses for training, Staff per diem during training	Harris-Lake Park CSD	\$75.00
Preschool	Desk Audit Zoom Support	Cost to AEA varies as it depends on the daily compensation of individual PLAEA Staff. Costs range from \$740 to \$954 per day. The generalized cost would be PLAEA staff daily rate times the number of days of the training plus preparation and follow up.	\$75	Materials Cost, Royalties/addl. fees, Train the Trainer Fees, Recertification of Trainers, Staff Facilitator Rate, Annual Membership Fee, Staff Travel expenses for training, Staff per diem during training	Harris-Lake Park CSD	\$75.00

PBIS Coach Meetings	<p>Participants will dig deeper with implementation of Positive Behavioral Interventions and Supports framework within their schools. Participants will engage with learning connected to various areas of PBIS: theoretical base, use of student outcome and implementation fidelity data, teaching expectations and social-emotional-behavioral skills and strategies, providing effective feedback, analyzing data for decision-making and application of additional essential components for sustaining a healthy system through the PBIS framework. Connections to the brain/nervous system, trauma-informed, mental health, restorative practices, and equity will be made. The focus of all activities will be on collaborative efforts across various stakeholders. These efforts are key to improving school climate, supporting the social-emotional-behavioral health of all students, including</p>	<p>Cost to AEA varies as it depends on the daily compensation of individual PLAEA Staff. Costs range from \$740 to \$954 per day. The generalized cost would be PLAEA staff daily rate times the number of days of the training plus preparation and follow up.</p>	<p>\$150</p>	<p>Materials Cost, Royalties/addl. fees, Train the Trainer Fees, Recertification of Trainers, Staff Facilitator Rate, Annual Membership Fee, Staff Travel expenses for training, Staff per diem during training</p>	<p>Spencer CSD</p>	<p>\$900.00</p>
---------------------	---	---	--------------	---	--------------------	-----------------

<p>PBIS Coach Meetings</p>	<p>Participants will dig deeper with implementation of Positive Behavioral Interventions and Supports framework within their schools. Participants will engage with learning connected to various areas of PBIS: theoretical base, use of student outcome and implementation fidelity data, teaching expectations and social-emotional-behavioral skills and strategies, providing effective feedback, analyzing data for decision-making and application of additional essential components for sustaining a healthy system through the PBIS framework. Connections to the brain/nervous system, trauma-informed, mental health, restorative practices, and equity will be made. The focus of all activities will be on collaborative efforts across various stakeholders. These efforts are key to improving school climate, supporting the social-emotional-behavioral health of all students, including</p>	<p>Cost to AEA varies as it depends on the daily compensation of individual PLAEA Staff. Costs range from \$740 to \$954 per day. The generalized cost would be PLAEA staff daily rate times the number of days of the training plus preparation and follow up.</p>	<p>\$150</p>	<p>Materials Cost, Royalties/addl. fees, Train the Trainer Fees, Recertification of Trainers, Staff Facilitator Rate, Annual Membership Fee, Staff Travel expenses for training, Staff per diem during training</p>	<p>Webster City CSD</p>	<p>\$150.00</p>
----------------------------	---	---	--------------	---	-------------------------	-----------------

PBIS Coach Meetings	<p>Participants will dig deeper with implementation of Positive Behavioral Interventions and Supports framework within their schools. Participants will engage with learning connected to various areas of PBIS: theoretical base, use of student outcome and implementation fidelity data, teaching expectations and social-emotional-behavioral skills and strategies, providing effective feedback, analyzing data for decision-making and application of additional essential components for sustaining a healthy system through the PBIS framework. Connections to the brain/nervous system, trauma-informed, mental health, restorative practices, and equity will be made. The focus of all activities will be on collaborative efforts across various stakeholders. These efforts are key to improving school climate, supporting the social-emotional-behavioral health of all students, including</p>	<p>Cost to AEA varies as it depends on the daily compensation of individual PLAEA Staff. Costs range from \$740 to \$954 per day. The generalized cost would be PLAEA staff daily rate times the number of days of the training plus preparation and follow up.</p>	<p>\$150</p>	<p>Materials Cost, Royalties/addl. fees, Train the Trainer Fees, Recertification of Trainers, Staff Facilitator Rate, Annual Membership Fee, Staff Travel expenses for training, Staff per diem during training</p>	<p>Ruthven-Ayrshire CSD</p>	<p>\$150.00</p>
---------------------	---	---	--------------	---	-----------------------------	-----------------

PBIS Coach Meetings	<p>Participants will dig deeper with implementation of Positive Behavioral Interventions and Supports framework within their schools. Participants will engage with learning connected to various areas of PBIS: theoretical base, use of student outcome and implementation fidelity data, teaching expectations and social-emotional-behavioral skills and strategies, providing effective feedback, analyzing data for decision-making and application of additional essential components for sustaining a healthy system through the PBIS framework. Connections to the brain/nervous system, trauma-informed, mental health, restorative practices, and equity will be made. The focus of all activities will be on collaborative efforts across various stakeholders. These efforts are key to improving school climate, supporting the social-emotional-behavioral health of all students, including</p>	<p>Cost to AEA varies as it depends on the daily compensation of individual PLAEA Staff. Costs range from \$740 to \$954 per day. The generalized cost would be PLAEA staff daily rate times the number of days of the training plus preparation and follow up.</p>	<p>\$150</p>	<p>Materials Cost, Royalties/addl. fees, Train the Trainer Fees, Recertification of Trainers, Staff Facilitator Rate, Annual Membership Fee, Staff Travel expenses for training, Staff per diem during training</p>	<p>Graettinger-Terril CSD</p>	<p>\$150.00</p>
---------------------	---	---	--------------	---	-------------------------------	-----------------

PBIS Coach Meetings	<p>Participants will dig deeper with implementation of Positive Behavioral Interventions and Supports framework within their schools. Participants will engage with learning connected to various areas of PBIS: theoretical base, use of student outcome and implementation fidelity data, teaching expectations and social-emotional-behavioral skills and strategies, providing effective feedback, analyzing data for decision-making and application of additional essential components for sustaining a healthy system through the PBIS framework. Connections to the brain/nervous system, trauma-informed, mental health, restorative practices, and equity will be made. The focus of all activities will be on collaborative efforts across various stakeholders. These efforts are key to improving school climate, supporting the social-emotional-behavioral health of all students, including</p>	<p>Cost to AEA varies as it depends on the daily compensation of individual PLAEA Staff. Costs range from \$740 to \$954 per day. The generalized cost would be PLAEA staff daily rate times the number of days of the training plus preparation and follow up.</p>	<p>\$150</p>	<p>Materials Cost, Royalties/addl. fees, Train the Trainer Fees, Recertification of Trainers, Staff Facilitator Rate, Annual Membership Fee, Staff Travel expenses for training, Staff per diem during training</p>	<p>Clay Central-Everly CSD</p>	<p>\$150.00</p>
---------------------	---	---	--------------	---	--------------------------------	-----------------

<p>Numeracy Project 2.0</p>	<p>Numeracy Project 2.0 is training designed to deepen K-12 math educators' understanding of best practices in mathematics instruction by developing students' understanding of numbers, and their ability to use numbers to solve problems by counting, adding, subtracting, multiplying, dividing, or any combination of these operations. Numeracy Project 2.0 develops students' strategies that support their use of these operations in real-world and mathematical problems. This training teaches the skills needed to master the use of the Numeracy Project materials, and to guide instruction for all educators in the Multi-Tiered Systems of Support.</p>	<p>Cost to AEA varies as it depends on the daily compensation of individual PLAEA Staff. Costs range from \$740 to \$954 per day. The generalized cost would be PLAEA staff daily rate times the number of days of the training plus preparation and follow up.</p>	<p>\$900/day</p>	<p>Materials Cost, Royalties/addl. fees, Train the Trainer Fees, Recertification of Trainers, Staff Facilitator Rate, Annual Membership Fee, Staff Travel expenses for training, Staff per diem during training</p>	<p>Greene County CSD-(MS)</p>	<p>\$900.00</p>
-----------------------------	---	---	------------------	---	-------------------------------	-----------------

<p>Numeracy Project 2.0</p>	<p>Numeracy Project 2.0 is training designed to deepen K-12 math educators' understanding of best practices in mathematics instruction by developing students' understanding of numbers, and their ability to use numbers to solve problems by counting, adding, subtracting, multiplying, dividing, or any combination of these operations. Numeracy Project 2.0 develops students' strategies that support their use of these operations in real-world and mathematical problems. This training teaches the skills needed to master the use of the Numeracy Project materials, and to guide instruction for all educators in the Multi-Tiered Systems of Support.</p>	<p>Cost to AEA varies as it depends on the daily compensation of individual PLAEA Staff. Costs range from \$740 to \$954 per day. The generalized cost would be PLAEA staff daily rate times the number of days of the training plus preparation and follow up.</p>	<p>\$900/day</p>	<p>Materials Cost, Royalties/addl. fees, Train the Trainer Fees, Recertification of Trainers, Staff Facilitator Rate, Annual Membership Fee, Staff Travel expenses for training, Staff per diem during training</p>	<p>Eagle Grove CSD</p>	<p>\$900.00</p>
-----------------------------	---	---	------------------	---	------------------------	-----------------

<p>Numeracy Project 2.0</p>	<p>Numeracy Project 2.0 is training designed to deepen K-12 math educators' understanding of best practices in mathematics instruction by developing students' understanding of numbers, and their ability to use numbers to solve problems by counting, adding, subtracting, multiplying, dividing, or any combination of these operations. Numeracy Project 2.0 develops students' strategies that support their use of these operations in real-world and mathematical problems. This training teaches the skills needed to master the use of the Numeracy Project materials, and to guide instruction for all educators in the Multi-Tiered Systems of Support.</p>	<p>Cost to AEA varies as it depends on the daily compensation of individual PLAEA Staff. Costs range from \$740 to \$954 per day. The generalized cost would be PLAEA staff daily rate times the number of days of the training plus preparation and follow up.</p>	<p>\$900/day</p>	<p>Materials Cost, Royalties/addl. fees, Train the Trainer Fees, Recertification of Trainers, Staff Facilitator Rate, Annual Membership Fee, Staff Travel expenses for training, Staff per diem during training</p>	<p>Greene County CSD (HS)</p>	<p>\$900.00</p>
-----------------------------	---	---	------------------	---	-------------------------------	-----------------

<p>Numeracy Project 2.0</p>	<p>Numeracy Project 2.0 is training designed to deepen K-12 math educators' understanding of best practices in mathematics instruction by developing students' understanding of numbers, and their ability to use numbers to solve problems by counting, adding, subtracting, multiplying, dividing, or any combination of these operations. Numeracy Project 2.0 develops students' strategies that support their use of these operations in real-world and mathematical problems. This training teaches the skills needed to master the use of the Numeracy Project materials, and to guide instruction for all educators in the Multi-Tiered Systems of Support.</p>	<p>Cost to AEA varies as it depends on the daily compensation of individual PLAEA Staff. Costs range from \$740 to \$954 per day. The generalized cost would be PLAEA staff daily rate times the number of days of the training plus preparation and follow up.</p>	<p>\$900/day</p>	<p>Materials Cost, Royalties/addl. fees, Train the Trainer Fees, Recertification of Trainers, Staff Facilitator Rate, Annual Membership Fee, Staff Travel expenses for training, Staff per diem during training</p>	<p>Greene County CSD Elementary</p>	<p>\$900.00</p>
-----------------------------	---	---	------------------	---	-------------------------------------	-----------------

<p>Numeracy Project 2.0</p>	<p>Numeracy Project 2.0 is training designed to deepen K-12 math educators' understanding of best practices in mathematics instruction by developing students' understanding of numbers, and their ability to use numbers to solve problems by counting, adding, subtracting, multiplying, dividing, or any combination of these operations. Numeracy Project 2.0 develops students' strategies that support their use of these operations in real-world and mathematical problems. This training teaches the skills needed to master the use of the Numeracy Project materials, and to guide instruction for all educators in the Multi-Tiered Systems of Support.</p>	<p>Cost to AEA varies as it depends on the daily compensation of individual PLAEA Staff. Costs range from \$740 to \$954 per day. The generalized cost would be PLAEA staff daily rate times the number of days of the training plus preparation and follow up.</p>	<p>\$75/participant for Regional Training</p>	<p>Materials Cost, Royalties/addl. fees, Train the Trainer Fees, Recertification of Trainers, Staff Facilitator Rate, Annual Membership Fee, Staff Travel expenses for training, Staff per diem during training</p>	<p>East Sac County CSD</p>	<p>\$300.00</p>
-----------------------------	---	---	---	---	----------------------------	-----------------

<p>Numeracy Project 2.0</p>	<p>Numeracy Project 2.0 is training designed to deepen K-12 math educators' understanding of best practices in mathematics instruction by developing students' understanding of numbers, and their ability to use numbers to solve problems by counting, adding, subtracting, multiplying, dividing, or any combination of these operations. Numeracy Project 2.0 develops students' strategies that support their use of these operations in real-world and mathematical problems. This training teaches the skills needed to master the use of the Numeracy Project materials, and to guide instruction for all educators in the Multi-Tiered Systems of Support.</p>	<p>Cost to AEA varies as it depends on the daily compensation of individual PLAEA Staff. Costs range from \$740 to \$954 per day. The generalized cost would be PLAEA staff daily rate times the number of days of the training plus preparation and follow up.</p>	<p>\$75/participant for Regional Training</p>	<p>Materials Cost, Royalties/addl. fees, Train the Trainer Fees, Recertification of Trainers, Staff Facilitator Rate, Annual Membership Fee, Staff Travel expenses for training, Staff per diem during training</p>	<p>Harris-Lake Park CSD</p>	<p>\$75.00</p>
-----------------------------	---	---	---	---	-----------------------------	----------------

<p>Numeracy Project 2.0</p>	<p>Numeracy Project 2.0 is training designed to deepen K-12 math educators' understanding of best practices in mathematics instruction by developing students' understanding of numbers, and their ability to use numbers to solve problems by counting, adding, subtracting, multiplying, dividing, or any combination of these operations. Numeracy Project 2.0 develops students' strategies that support their use of these operations in real-world and mathematical problems. This training teaches the skills needed to master the use of the Numeracy Project materials, and to guide instruction for all educators in the Multi-Tiered Systems of Support.</p>	<p>Cost to AEA varies as it depends on the daily compensation of individual PLAEA Staff. Costs range from \$740 to \$954 per day. The generalized cost would be PLAEA staff daily rate times the number of days of the training plus preparation and follow up.</p>	<p>\$75/participant for Regional Training</p>	<p>Materials Cost, Royalties/addl. fees, Train the Trainer Fees, Recertification of Trainers, Staff Facilitator Rate, Annual Membership Fee, Staff Travel expenses for training, Staff per diem during training</p>	<p>Bishop Garrigan-Algona</p>	<p>\$75.00</p>
-----------------------------	---	---	---	---	-------------------------------	----------------

<p>Numeracy Project 2.0</p>	<p>Numeracy Project 2.0 is training designed to deepen K-12 math educators' understanding of best practices in mathematics instruction by developing students' understanding of numbers, and their ability to use numbers to solve problems by counting, adding, subtracting, multiplying, dividing, or any combination of these operations. Numeracy Project 2.0 develops students' strategies that support their use of these operations in real-world and mathematical problems. This training teaches the skills needed to master the use of the Numeracy Project materials, and to guide instruction for all educators in the Multi-Tiered Systems of Support.</p>	<p>Cost to AEA varies as it depends on the daily compensation of individual PLAEA Staff. Costs range from \$740 to \$954 per day. The generalized cost would be PLAEA staff daily rate times the number of days of the training plus preparation and follow up.</p>	<p>\$75/participant for Regional Training</p>	<p>Materials Cost, Royalties/addl. fees, Train the Trainer Fees, Recertification of Trainers, Staff Facilitator Rate, Annual Membership Fee, Staff Travel expenses for training, Staff per diem during training</p>	<p>North Kossuth CSD</p>	<p>\$75.00</p>
-----------------------------	---	---	---	---	--------------------------	----------------

<p>Numeracy Project 2.0</p>	<p>Numeracy Project 2.0 is training designed to deepen K-12 math educators' understanding of best practices in mathematics instruction by developing students' understanding of numbers, and their ability to use numbers to solve problems by counting, adding, subtracting, multiplying, dividing, or any combination of these operations. Numeracy Project 2.0 develops students' strategies that support their use of these operations in real-world and mathematical problems. This training teaches the skills needed to master the use of the Numeracy Project materials, and to guide instruction for all educators in the Multi-Tiered Systems of Support.</p>	<p>Cost to AEA varies as it depends on the daily compensation of individual PLAEA Staff. Costs range from \$740 to \$954 per day. The generalized cost would be PLAEA staff daily rate times the number of days of the training plus preparation and follow up.</p>	<p>\$75/participant for Regional Training</p>	<p>Materials Cost, Royalties/addl. fees, Train the Trainer Fees, Recertification of Trainers, Staff Facilitator Rate, Annual Membership Fee, Staff Travel expenses for training, Staff per diem during training</p>	<p>Graettinger-Terril CSD</p>	<p>\$150.00</p>
-----------------------------	---	---	---	---	-------------------------------	-----------------

Numeracy Project 2.0	Numeracy Project 2.0 is training designed to deepen K-12 math educators' understanding of best practices in mathematics instruction by developing students' understanding of numbers, and their ability to use numbers to solve problems by counting, adding, subtracting, multiplying, dividing, or any combination of these operations. Numeracy Project 2.0 develops students' strategies that support their use of these operations in real-world and mathematical problems. This training teaches the skills needed to master the use of the Numeracy Project materials, and to guide instruction for all educators in the Multi-Tiered Systems of Support.	Cost to AEA varies as it depends on the daily compensation of individual PLAEA Staff. Costs range from \$740 to \$954 per day. The generalized cost would be PLAEA staff daily rate times the number of days of the training plus preparation and follow up.	\$75/participant for Regional Training	Materials Cost, Royalties/addl. fees, Train the Trainer Fees, Recertification of Trainers, Staff Facilitator Rate, Annual Membership Fee, Staff Travel expenses for training, Staff per diem during training	Twin Rivers CSD	\$75.00
----------------------	--	--	--	--	-----------------	---------

Special Education Programs and Services

Service/Program Name	Detailed Description of Service/Program (~150 words)	Cost to AEA Per Unit	Cost to Customer Per Unit	Customer Cost Rationale/Methodology	Name of LEA/Nonpublic School Purchasing Service/Program	Total LEA/Nonpublic School Purchase Amount of Each Service/Program
n/a	n/a	n/a	n/a	n/a	n/a	