

# Iowa 2024 spring student assessment results



Spring 2024 assessment results from the Iowa Statewide Assessment of Student Progress for students in grades 3-11 shows long-term progress in English language arts and mathematics across most grade levels, although significant proficiency gaps remain between certain groups of students.

## What do the results show?

When examining Iowa Statewide Assessment of Student Progress (ISASP) results from spring 2024 compared to spring 2019:

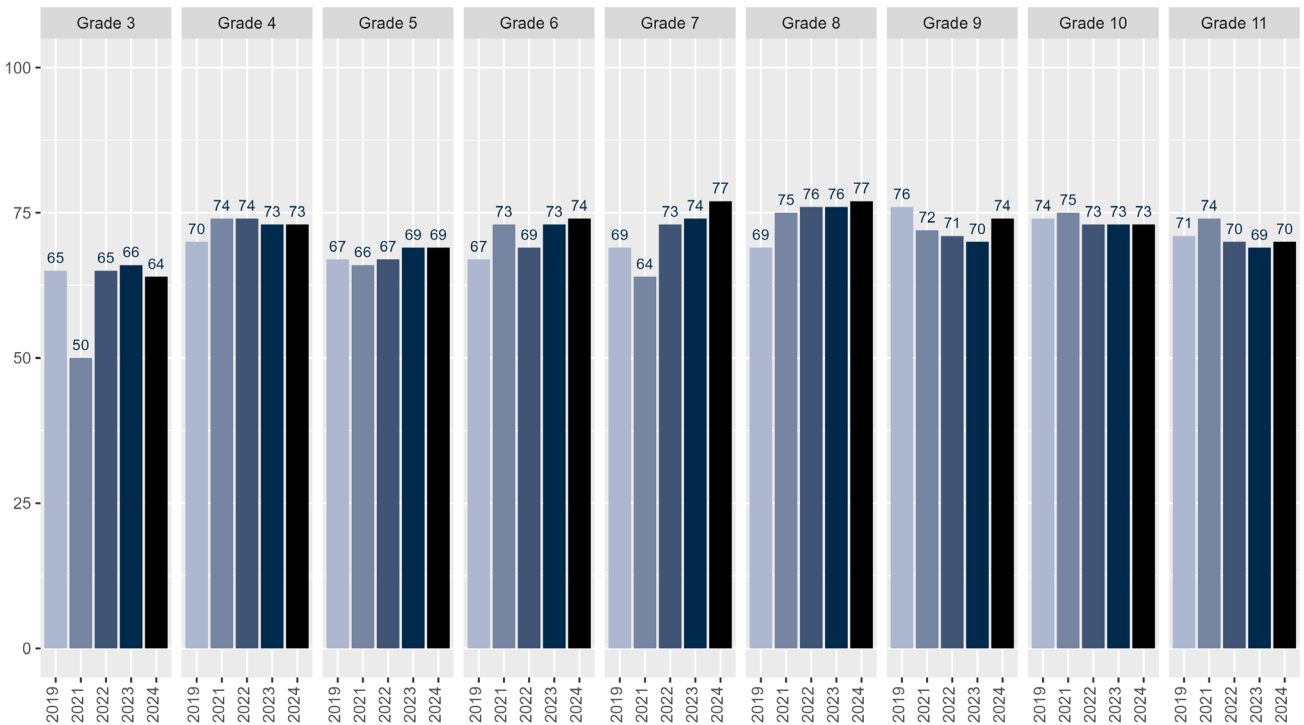
- Proficiency increased across five grade levels (grades 4-8) in English language arts (ELA).
  - The largest ELA increases were in grades 6-8, which had proficiency score increases between 7 and 8 percentage points.
- Math proficiency improved across grades 3, 5, 6 and 8 with no change in grades 7 and 11.
  - Math proficiency improved the most for third-grade students, increasing five percentage points.
  - Students in ninth grade experienced the largest decrease in math proficiency, down 7 percentage points from 2019.

## English Language Arts (ELA) Achievement

Spring 2024 ELA proficiency rates were either up or flat compared to spring 2023 rates in all but one grade level. Grade 3 was the exception which saw a decline in proficiency from the prior year. Grade 3 students would have been in kindergarten during the 2020-21 school year which was disrupted by the COVID-19 pandemic.

Comparing spring 2024 results to pre-pandemic results from 2019 indicate Iowa student achievement has overall rebounded to post pandemic levels in ELA achievement.

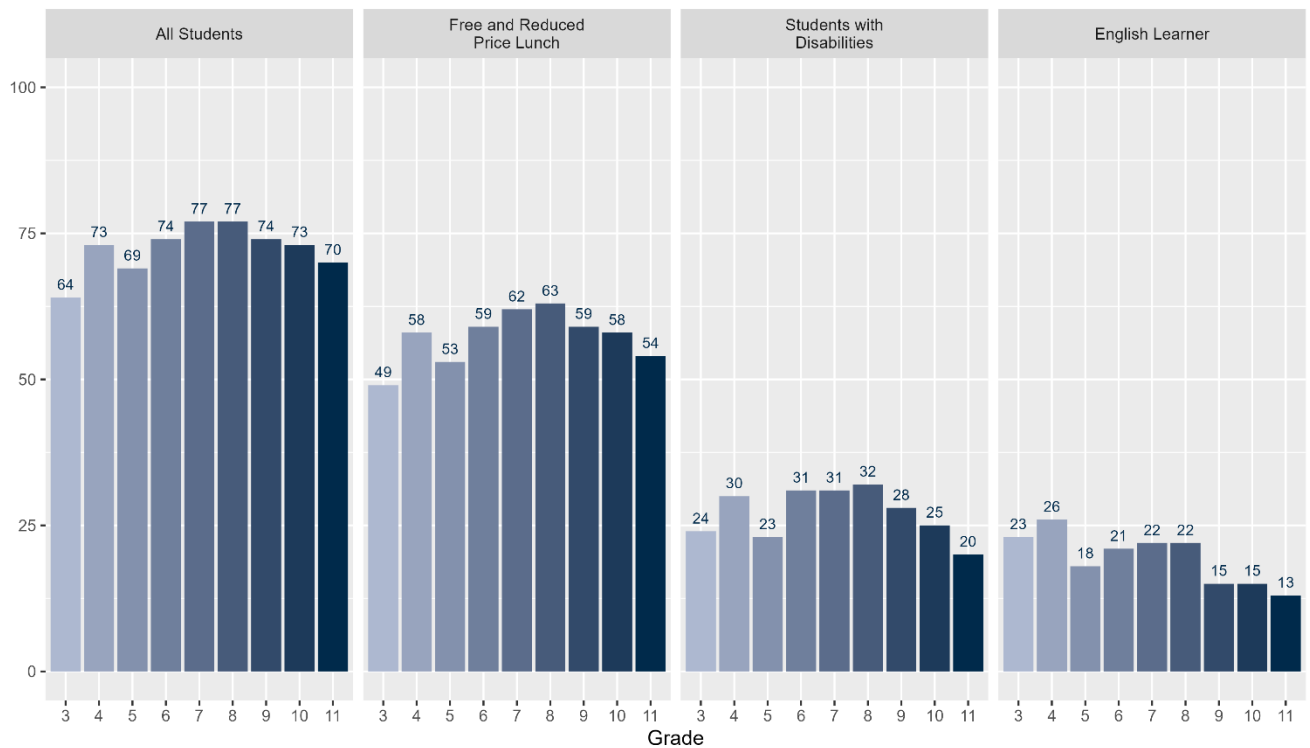
### ISASP ELA Proficiency by Year - All Students



## English Language Arts (ELA) results by student group

However, when broken down further, the 2024 ELA results show significant proficiency gaps between some student groups and their classmates, including students who were eligible for free or reduced-price lunch (15 to 16 percentage point difference), students with disabilities (40 to 50 percentage point difference) and English learners (41 to 59 percentage point difference).

### ELA - Percent Proficient or Above Spring 2024 by Student Group

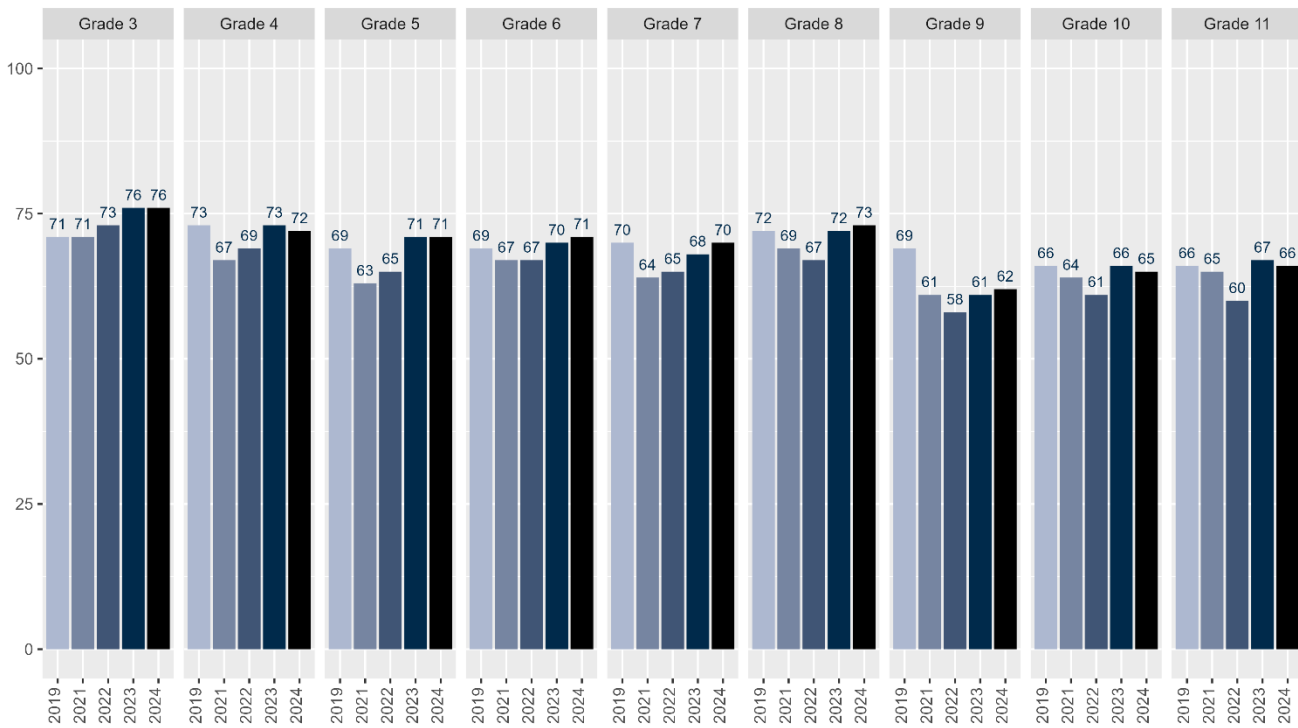


## Math Achievement

Spring 2024 math proficiency rates show relatively little to no growth across most grades when compared to last year, with some grade levels up a percentage point and other grades down a percentage point. Grades 6 through 9 increased one to two percentage points, while grades 4, 10 and 11 decreased one percentage point. Grades 3 and 5 remained the same as last year.

Iowa student's math achievement proficiency rates have overall rebounded to post pandemic levels.

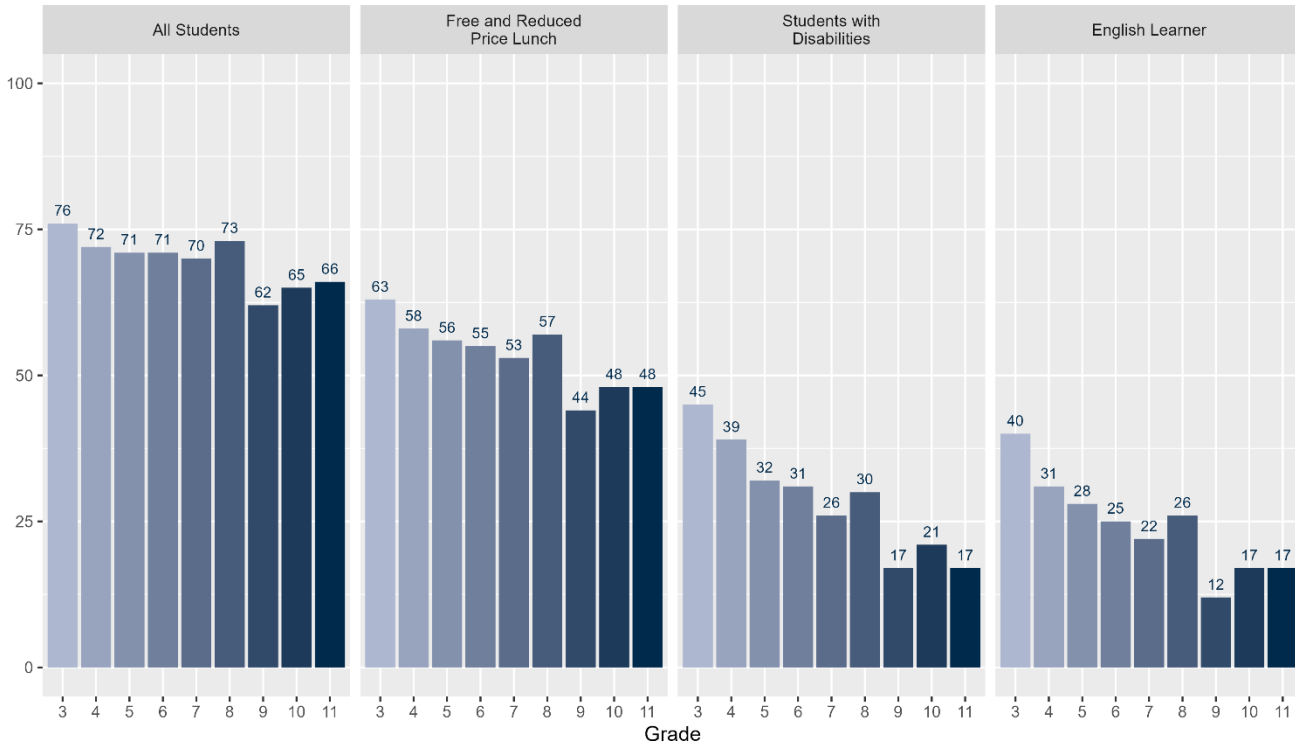
ISASP Math Proficiency by Year - All Students



## Math results by student group

Like ELA, math results show significant proficiency gaps between some student groups and their classmates, including students who are eligible for free or reduced-price lunch (13 to 18 percentage point difference), students with disabilities (31 to 49 percentage point difference) and English learners (36 to 50 percentage point difference).

### Math - Percent Proficient or Above Spring 2024 by Student Group



## What is the Iowa Statewide Assessment of Student Progress (ISASP)

The ISASP is administered each spring and is the general summative accountability assessment in Iowa that meets the requirements of the federal Every Student Succeeds Act (ESSA). The ISASP reflects what's being taught in Iowa classrooms and how students are progressing toward grade-level expectations outlined in Iowa's academic standards. The ISASP is a measure that helps teachers understand where students are succeeding and where they may need more help.

ISASP data will inform the Department's work to support school improvement and efforts to ensure resources are targeted to those communities, schools and students most in need.



## What is the state participation rate?

Iowa's state ISASP participation rate was 99 percent in 2023-24, 99 percent in 2022-23, 98 percent in 2021-22 and 98 percent in 2020-21, ensuring that the results yielded a true picture of student performance.

For more information

Contact Jay Pennington, PhD, Bureau Chief of Information and Analysis Services, at [jay.pennington@iowa.gov](mailto:jay.pennington@iowa.gov).